



New Product Announcement

AP65200

Light load improved 2A synch DC/DC Buck Converter

- The AP65200 is a 340kHz switching frequency external compensated synchronous DC/DC buck converter. It has integrated low $R_{DS(ON)}$ high and low side MOSFETs
- The AP65200 enables continues load current of up to 2A with efficiency as high as 96%.
- **The AP65200 implements an automatic custom light load efficiency improvement algorithm**
- The AP65200 simplifies board layout and reduces space requirements with its high level of integration and minimal need for external components, making it ideal for distributed power architectures
- The AP65200 is available in a standard Green SO-8 package and is RoHS compliant



Diodes Advantage

- **Synchronous DCDC Buck converter with continues load current of 2A and peak of 3A**
 - Increases efficiency in light load condition
 - Standard industrial pinout
- **Protection**
 - **Over Current Protection**
 - **Thermal Shutdown**Improve robustness of circuit and prevents pre-mature failure
- **Standard SO-8 package**

Applications

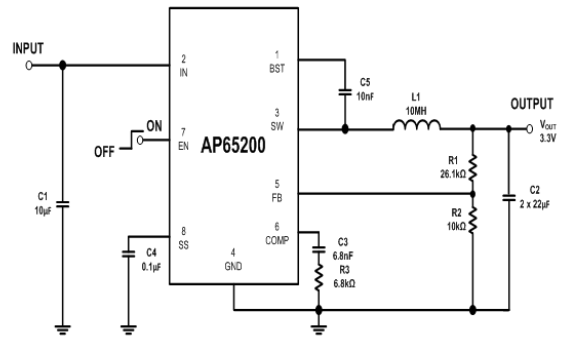
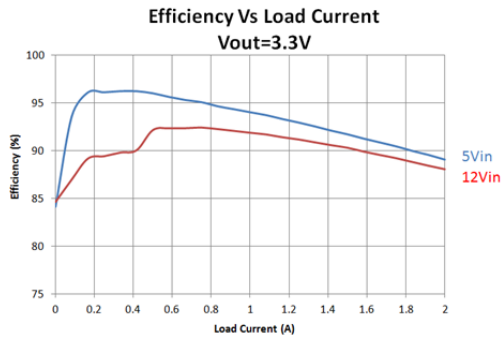
- Gaming Consoles
- TV sets and Monitors
- Set Top Boxes
- Network Systems
- Distributed power systems
- Home Audio
- Consumer electronics
- Green Electronics



New Product Announcement

AP65200

Light load improved 2A synch DC/DC Buck Converter



Product Portfolio

Part #	Min. Input Voltage (V)	Max. Input Voltage (V)	Output Voltage (V)	Output Current (A)	Frequency (kHz) typ	Internal Vref (V) typ	Efficiency (%)	Standby Quiescent Current (uA) typ	Operating Ambient Temp Range (°C)	Features							Available Packages
										Enable Pin	Current Limit Protection	Thermal Shutdown	Adjustable Output Voltage	Under Voltage Lockout	Programmable Softstart	Power Good	
AP65200	4.75	18	0.925 to 16	2	340	0.925	96	1	-40 to +85	X	X	X	X	X	X	X	S0-8

Ordering Information

Device	Packaging	\$ @ 250k	Reel Size	Quantity
AP6200S-13	S0-8	0.14	13"	2500

To find out more information:

Datasheet <http://www.diodes.com/datasheets/AP65200.pdf>