

Synchronous Rectification Driver Compatible with CCM Mode

The APR348 is a secondary-side MOSFET driver for synchronous rectification, which can effectively reduce the secondary-side rectifier power dissipation and provide a high-performance solution.

The APR348 can support continuous or discontinuous conduction mode (CCM and DCM) and quasi-resonant flyback operation based on a MOSFET operating on-time control technology.

This technology provides very fast turn-on and turn-off delay to reduce power loss and keep safe operation without adding any external components or circuitry.

The APR348 can configure into high-side or low-side application to fit various design requirements and can also provide high-performance solutions up to 20V output voltage application.

The APR348 is available in SOT26 package.



DIODES Advantage

The APR348 is a small-footprint, high-performance, cost-effective synchronous rectification solution for 5V - 20V power converters in portable, consumer and home automation applications.

- **Supports CCM, DCM and Quasi-Resonant Modes**

APR348 provides very fast turn-on and turn-off delay to reduce power loss and keep safe operation under CCM mode

- **Supports High-Side or Low-Side Application**

APR348 power supply can be charged by VDET, fulfill high-side application without extra Vcc powered winding

- **Available in SOT26 Package Using Fewer External Components**
Saving BOM cost and layout size

Applications

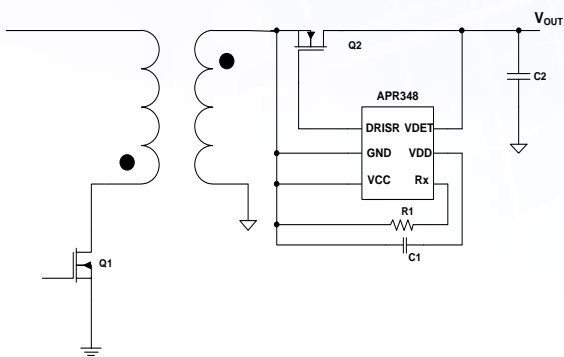
- USB PD
- Rapid Charger
- General AC/DC Adaptor



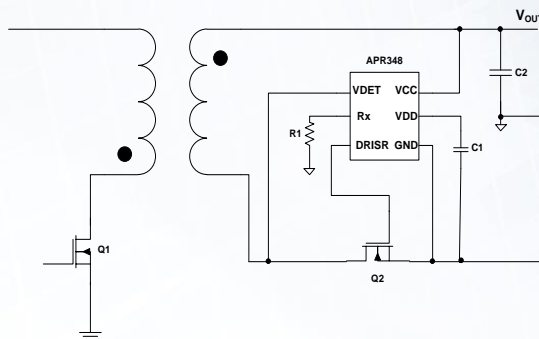
New Product Announcement

APR348

Typical Application Circuit



High-Side Application



Low-Side Application

Product Portfolio

Part Number	VCC MAX (V)	Operating Current (μA)	Turn-Off Threshold (mV)	Drain Rating (V)	Mosfet R _{ds(on)} (mΩ)	Package
APR348	28	170	-7	External	External	SOT26

Device	Packaging	Quantity	Datasheet
APR348W6-7	SOT26	3000	https://www.diodes.com/assets/Datasheets/APR348.pdf

Further information:

<https://www.diodes.com/part/APR348>