



# New Product Announcement

## AP3927D

### Low Standby Power, High-Voltage, Non-Isolated Buck Power Switcher for Appliances and IoT

The AP3927D is a universal AC, high-voltage input, non-isolated, offline switcher specially designed for applications with a maximum of 360mA of output current or up to 6W of output power.

The device provides a simple power supply solution for smart home appliances, home automation, industrial control, and IoT power applications.

Supporting both non-isolated buck or offline flyback topology solutions, the product has several differentiating advantages:

- Low standby power
- High light-load efficiency
- Cost-saving BOM
- Rich protection functions to ensure reliable operation

The AP3927D is available in the SO-7 (Type B) package that supports HV creepage requirements.

*The Diodes logo is a registered trademark of Diodes Incorporated in the United States and other countries.*

*All other trademarks are the property of their respective owners.*

© 2025 Copyright Diodes Incorporated. All Rights Reserved.



#### The DIODES Advantage

**This high-voltage, non-isolated buck power switcher provides a reliable solution for appliances and IoT devices.**

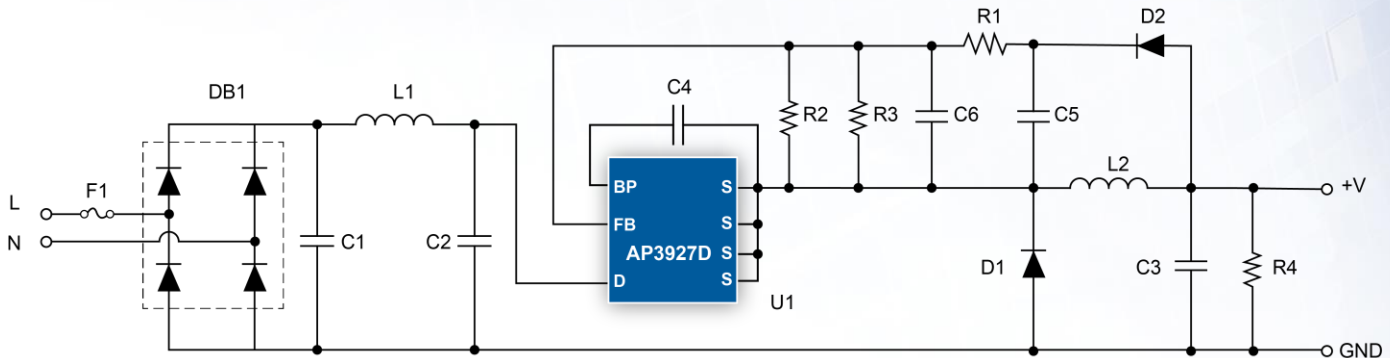
- **Low System BOM Cost**  
Non-isolated buck configuration removes expensive components
- **Low Standby Power (<20mW)**  
Meets latest standby power requirements
- **High Light-Load Efficiency**  
Caters to IoT devices and other equipment that spend large periods of time sleeping
- **Rich Protection Features: Overtemperature, Over-Load, and Short-Circuit Protection**  
Ensures robust and reliable operation
- **Industry-Standard Footprint-Compatible SO-7 Switcher**  
Provides a cost-effective alternative to existing non-isolated buck solutions

#### Applications

Non-Isolated Standby and Auxiliary power rails in

- Smart home appliances
- Home automation
- Industrial controls
- IoT power

## Typical Application



## Non-Isolated Buck Product Portfolio

Part Number	UVLO Threshold	Max. $R_{DS(ON)}$ ( $T_A = 25^\circ\text{C}$ )	$BV_{DSS}$	Peak Current	Standby Power	Output Power Rating	Package
	V	$\Omega$	V	mA	mW	W	
<a href="#">AP3927D</a>	3.5	10.5	700	650	< 20	6	SO-7 (Type B)
<a href="#">AP3928</a>	7.9	6.5	700	1100	< 30	10	SO-8
<a href="#">AP3917B</a>	6.5	16	650	280	< 30	2	SO-7
<a href="#">AP3917C</a>	6.5	16	650	420	< 30	3	SO-7

## Ordering Information

Orderable Part Number	Compliance (Only Automotive Supports PPAP)	Package	Moisture Sensitivity	Packing	
				Quantity	Carrier
<a href="#">AP3927DS7-13</a>	<a href="#">Standard</a>	SO-7 (Type B)	MSL-3	4,000	13" Tape & Reel