



New Product Announcement

PT7M3808

Low Quiescent Programmable-Delay Supervisory IC

The PT7M3808 family of microprocessor supervisory circuits monitor system voltage from 0.4V to 5.0V, asserting an open-drain RESET signal when the manual reset (MR) pin drops to a logic low. The RESET output remains low for the user-adjustable delay time after the SENSE voltage and Manual Reset (MR) return above the respective thresholds.

The PT7M3808 family can provide Power-On Reset Generator with Adjustable Delay Time from 1.25ms to 10s and has a very low typical quiescent current of 2.8 μ A so it is well-suited to battery-powered applications.

PT7M3808 is available in a small SOT23 and an ultra-small 2.0 x 2.0 TDFN package, and is fully specified over a temperature range of -40°C to +125°C.



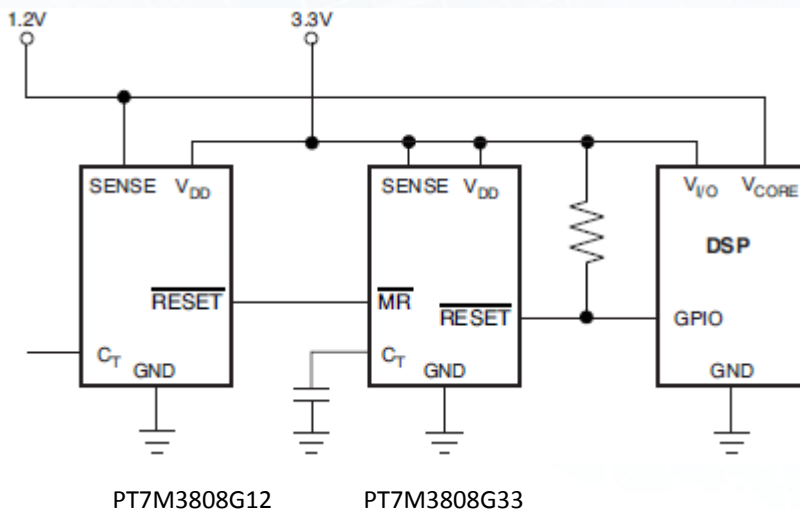
The Diodes Advantage

- **Low Quiescent Current: 2.8 μ A Typical**
Minimize operating current to save power consumption
- **High Threshold Accuracy: 0.5% Typ.**
Very precise for reset voltage
- **Open-Drain Reset Output and Manual Reset(MR) input**
- **Power-On Reset Generator with Adjustable Delay Time: 1.25ms to 10s**
Flexibility for delay time setting for various application and market
- **Temperature Range: -40°C to +125°C**
- **Available Package: TDFN2.0x2.0-6L and SOT23-6L**
Low-profile small footprint industry standard package, easy for different applications and market

Target Markets

- Server/Storage
- Surveillance
- Networking
- Notebook

Typical Application Schematic



Product Portfolio

Product	Nominal Supply Voltage	SENSE Threshold Voltage(V_{IT})
PT7M3808G01	Adjustable	0.405V
PT7M3808G09	0.9V	0.84V
PT7M3808G12	1.2V	1.12V
PT7M3808G125	1.25V	1.16V
PT7M3808G15	1.5V	1.40V
PT7M3808G18	1.8V	1.67V
PT7M3808G19	1.9V	1.77V
PT7M3808G25	2.5V	2.33V
PT7M3808G30	3.0V	2.79V
PT7M3808G33	3.3V	3.07V
PT7M3808G50	5.0V	4.65V

Ordering Information

Part Number	Package Code	Package
PT7M3808GxxxZCEX	ZC	6-pin, 2.0x2.0 (TDFN), Tape & Reel
PT7M3808GxxxTAEX	TA	6-pin, Small Outline Transistor Plastic Package (SOT23), Tape & Reel

Note:

- E = Pb-free and Green
- Adding X Suffix= Tape/Reel
- xxx shows different functions, see above Product Portfolio Table.