



New Product Announcement

AP7347DQ

High-PSRR, 500mA, Automotive-Compliant LDO with Output-Discharge for Noise-Sensitive POL Applications

The AP7347DQ is a 500mA low dropout regulator with 1% tolerance, 75dB PSRR, low output noise, and low quiescent current.

The AP7347DQ supports a wide variety of fixed voltage variants ranging from 1.0V to 5.0V, with several that are near 1V.

With its low noise and excellent line and load transient responses, the AP7347DQ provides a high-performance LDO in noise-sensitive automotive applications.

The automotive-compliant AP7347DQ is qualified to AEC-Q100 Grade 1 and is available in both the SOT25 and the side-wall-plated W-DFN2020-6 (SWP), the latter of which having greater power-handling capability.

Automotive compliant – AEC-Q100 grade 1 qualified in IATF 16949 certified manufacturing sites and supports PPAP documentation



The Diodes Advantage

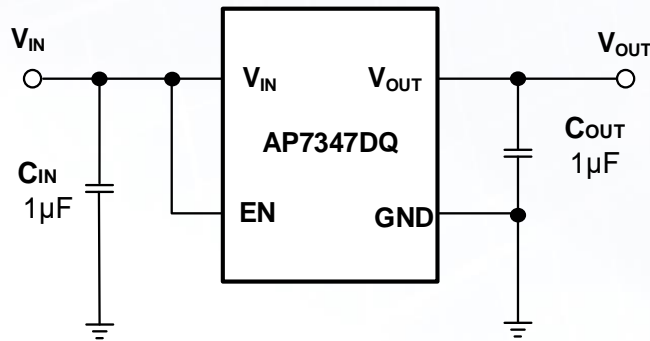
The AP7347DQ provides reliable and high-performance regulation for automotive applications.

- **High 75dB (@ 1kHz) PSRR and Low Noise (60µVrms @ 10Hz - 100kHz)**
Suitable for noise-sensitive applications such as automotive RF subsystems
- **1.0% Output Tolerance Across -40°C to +125°C**
Maintains accuracy over full temperature range
- **Low 60µA Quiescent Current**
Offers power saving in low power systems
- **Automotive-Compliant With AEC-Q100 Grade 1**
Operates across -40°C to 125°C ambient temperature and supports PPAP documentation
- **Automatic Output Voltage Discharge**
Ensure systems start-up in known state from either power-up or disabling

Automotive Applications

- POL in ADAS
- Wireless communication
- RF supplies
- Infotainment power supplies

Typical Application Circuit



Automotive-Compliant CMOS LDO Product Portfolio

Part Number	V _{IN}	Fixed V _{OUT}	I _{OUT}	V _{DROP} @ Full Load (3.3V)	I _Q	Output Accuracy	Output Discharge	Enable	Packages
	(V)	(V)	(mA)	(mV)	(µA)	(%)			
AP7347DQ	1.7 to 5.5	1.0, 1.05, 1.1, 1.2, 1.5, 1.8, 2.2, 2.5, 2.8, 2.9, 3.3, 5.0	500	320	60	1	Yes	Yes	SOT25 W-DFN2020-6 (SWP)
AP7343Q	1.7 to 5.25	0.9, 1.0, 1.1, 1.2, 1.5, 1.8, 2.5, 2.7, 2.8, 2.9, 3.0, 3.3	300	310	35	1	No	Yes	SOT25
AP7343DQ							Yes		
AP7315Q	1.7 to 5.25	1.1, 1.2, 1.5, 1.8, 2.5, 2.7, 2.8, 2.9, 3.0, 3.3	150	290	35	1	No	Yes	SOT25
AP7315DQ							Yes		

Ordering Information

Part Number	Compliance	Package Code	Package	Moisture Sensitivity	Reel Size	Tape Width	Quantity
AP7347DQ-XXXW5-7*	Automotive	W6	SOT25	MSL 1	7 inches	8mm	3000
AP7347DQ-XXXFDZW-7*	Automotive	FDZW	W-DFN2020-6 (SWP) (Type A1)	MSL 1	7 inches	8mm	3000

*Where XXX stands for voltage options—see [datasheet](#)