



## New Product Announcement

DML3006LFDS  
DML3009LDC

### High Current Power Delivery Load Switches

The DML3006LFDS and DML3009LDC are high current single channel load switches, capable of driving up to 11A and 15A load respectively. They meet the demands of notebook, tablet computers, set-top boxes, servers, gateways, telecom, networking, medical and industrial equipment.

The DML3006LFDS and DML3009LDC load switch provide a component and area reducing solution for efficient power domain switching with inrush current limit via soft-start. In addition to integrated control functionality with ultra low on-resistance, these devices offer system safeguards and monitoring via fault protection and power good signaling.

This cost-effective solution is ideal for power management and hot-swap applications requiring low power consumption in a small footprint.



#### The Diodes Advantage

The 11A DML3006LFDS and 15A DML3009LDC are load switches designed to control, protect and recover power delivery integrated circuits.

▪ **Low On-State Resistance & Thermally Efficient**

DML3006LFDS  $R_{DS(ON)} = 8.6m\Omega @ V_{CC} = 5V$  and  $V_{IN} = 1.8V$ .

DML3009LDC  $R_{DS(ON)} = 4.8m\Omega @ V_{CC} = 5V$  and  $V_{IN} = 1.8V$ .

The thermally efficient ensures sufficiently low surface temperature during operation.

▪ **Comprehensive Protection & Recovery Mechanisms**

To protect the device and the system from possible fault, the comprehensive mechanism built-in comprises of: input under-voltage lock-out, thermal shut-down, over-current and short-circuit protection.

▪ **Package – DML3006 DFN2020-8 / DML3009 DFN3030-12**

Low-profile, small footprint industry standard package.

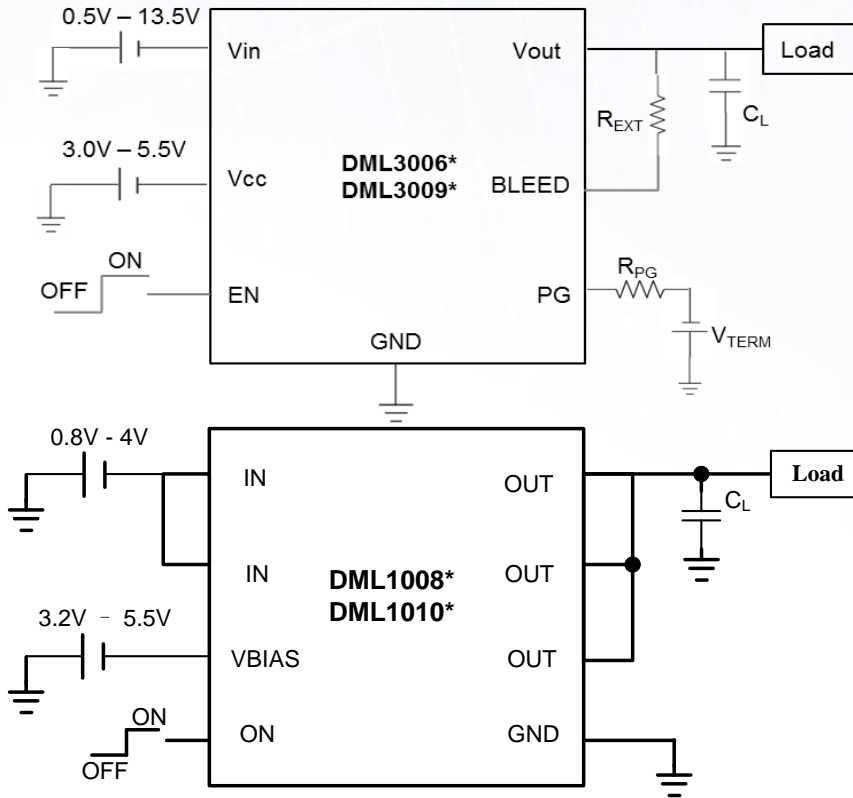
#### Applications

- Portable Electronics
- Notebook/Tablet Computers
- Set-Top Boxes, Servers, and Gateways
- Telecom, Networking, Medical, and Industrial Equipment
- Hot-Swap Devices and Peripheral Ports



**New Product  
Announcement**  
.....  
**DML3006LFDS**  
**DML3009LDC**

**Typical Application Circuit**



**DML300x Product Specification Table**

Part Number	Vin (min) / Vin (max) (V)	Load Current I <sub>max</sub> (A)	RDS(on) (mΩ) (typ) Vin=1.8V Vcc=5V	Rise Time (μS) Vin=1.8V Vcc=5V	Output Discharge Resistance (Max) (Ω)	Quiescent Current (μA)	Package
DML3006LFDS	0.5 / 13.5	11*	8.6	190	130	310	V-DFN2020-8
DML3009LDC	0.5 / 13.5	15*	4.8	370	130	310	V-DFN3030-12

\* maximum steady state current the load switch can pass at room ambient temperature without entering thermal lockout

**DML100x Product Specification Table**

Part Number	Vin (min) / Vin (max) (V)	Load Current I <sub>max</sub> (A)	RDS(on) (mΩ) (typ) Vin=1.05V Vbias=5V	Rise Time (μS) Vin=1.05V Vbias=5V	Output Discharge Resistance (Max) (Ω)	Quiescent Current (μA)	Package
DML1008LDS	0.8 / 4	6	8	16	200	35	V-DFN3030-8
DML1010FDK	0.8 / 4	6	8	16	200	35	V-DFN2020-8