



New Product Announcement

AP4341S

AP4341S – Improved Transient Response Solution for PSR Adapters/Chargers

AP4341S is an output voltage detector for Primary Side Control Systems. It is a low power loss solution. It detects the output voltage and provides a periodic signal when the output voltage is lower than a certain threshold.

The periodical signal can be coupled by the transformer to the primary side and provided as an awakening signal for the main primary side controller. By fast response to secondary side voltage, AP4341S can effectively improve the transient performance of the Primary Side Control System.

AP4341S will enable a discharge circuit when it detects the output voltage is higher than a certain threshold.

AP4341S is designed to operate with Diodes' PSR ICs such as AP3776 and AP3785.

AP4341S is available in SOT23 package.



The Diodes Advantage

AP4341S delivers high performance, cost-effective PSR solutions for portable and consumer applications.

- **Fast Detector of Supply Voltages, 33kHz Output Pulse**
Improves dynamic performance.
- **No External Components, SOT23 Package**
Lower cost
- **Low Power Loss for Green Mode Applications**
Decreases standby power loss

Applications

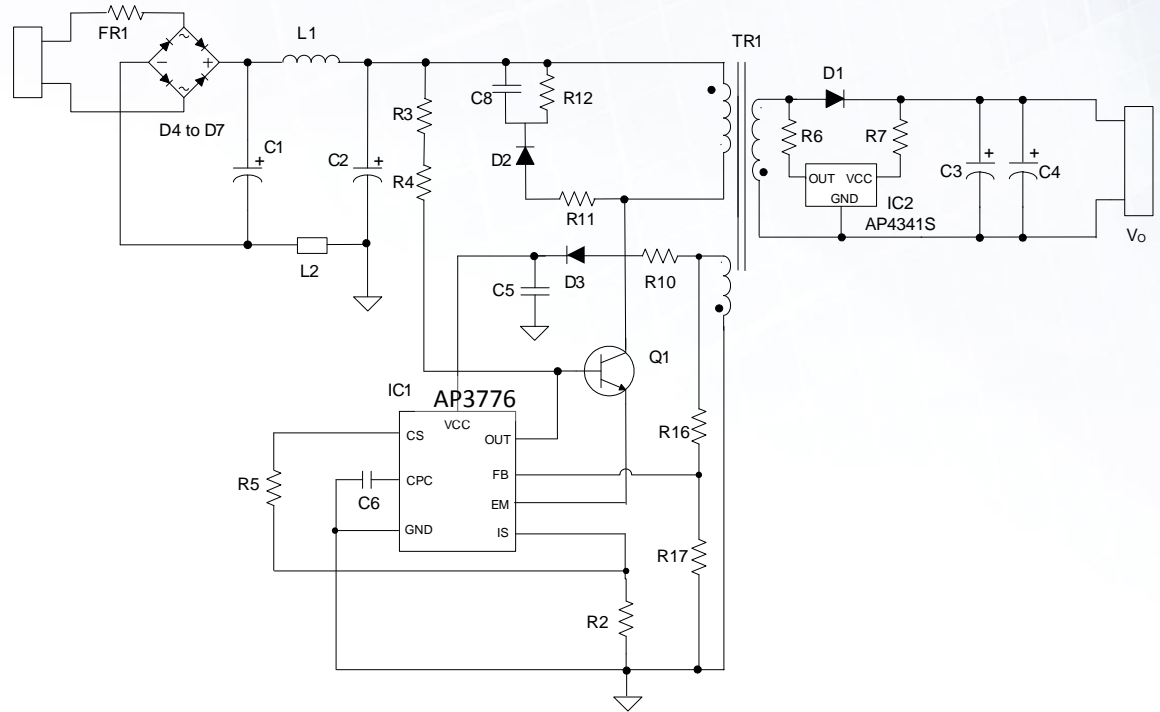
- Adapters/Chargers for cell/cordless phones, ADSL modems, MP3 and other portable apparatus
- Standby and auxiliary power supplies



New Product Announcement

AP4341S

Typical Quick Charge Solution



Diodes' Cost Effective PWM Controllers for Quick Charge Applications

| Part Number | VCC Max. (V) | Power-on Voltage (V) | Startup Current (µA) | Operating Current (µA) | Trigger Voltage (V) | Discharge Voltage (V) | VOVP (V) | Discharge Current (mA) | IOVP (mA) | Package Outline |
|-------------|--------------|----------------------|----------------------|------------------------|---------------------|-----------------------|----------|------------------------|-----------|-----------------|
| AP4341S | 6 | 2.5 | 30 | 80 | 5.1 | 5.15 | 5.25 | 1 | 100 | SOT23 |

Ordering Information

| Device | Operating Junction Temperature | Packaging | Part Mark | Reel Size | Quantity |
|---------------|--------------------------------|-----------|-----------|-----------|----------|
| AP4341SNTR-G1 | -40 to +150° C | SOT23 | GFB | 7" | 3,000 |

To find out more information:

Family web page: http://www.diodes.com/catalog/Secondary_Side_PSR_Accelerator_187
 Datasheet: <http://www.diodes.com/files/datasheets/AP4341S.pdf>