



New Product Announcement

AP3402, AP3419,
AP3429/A

2A Step-Down Synchronous Step-Down DC-DC Converter

AP3402, AP3419 and AP3429/A are current-mode, PWM synchronous step-down DC-DC converters, capable of driving a 2A load with high efficiency and excellent line and load regulation. They are developed to meet the demands of Set-top-boxes, TVs, Routers, Notebooks and Security Systems.

AP3402/AP3419/AP3429 deliver 2A maximum output current while consuming only 90 μ A no-load quiescent current. Ultra-low $R_{DS(ON)}$, integrated MOSFETs and 100% duty-cycle operation make them an ideal choice for high-current applications which require a low-dropout threshold.

AP3402/AP3419/AP3429 have built-in protection features and Power-Good output (AP3402 only).

AP3402 and AP3419 are available in TSOT25; AP3429/A in TSOT26.



The Diodes' Advantage

- **Synchronous DC-DC Buck Converter with a Continual Load Current of 2A and Light-Load High-Efficiency**
Provides high-current output and also increases efficiency in both light and heavy load conditions
- **Protection**
Input Overvoltage Protection, Undervoltage Lockout, Over - Temperature Protection and Short-Circuit Protection
- **Package – TSOT25, TSOT26**
Industry standard, low-profile packages
- **Miniaturized Packages without Extra External Components**
Reduces the PCB board space required

Applications

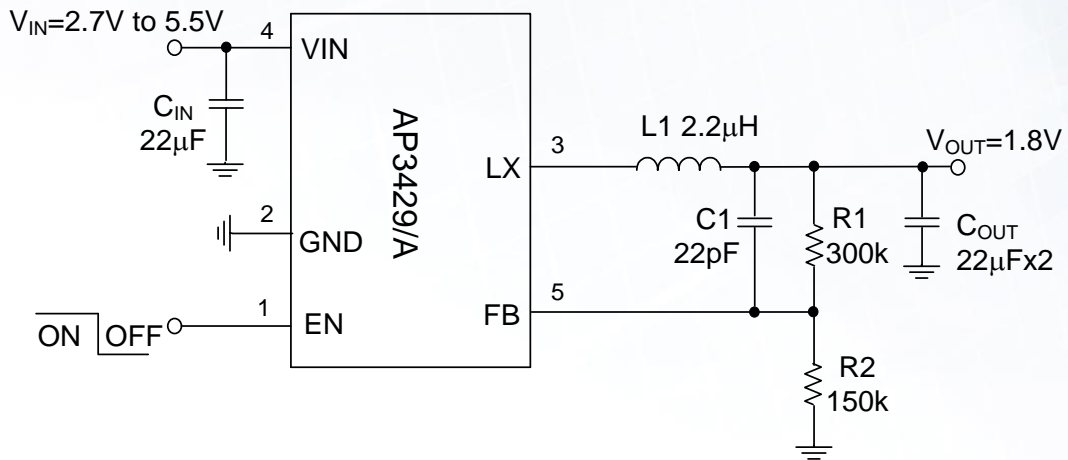
- TVs
- Set-top boxes
- Notebooks
- Routers



New Product Announcement

AP3402, AP3419, AP3429/A

Typical Application Schematic



Product Portfolio

Part	Input Voltage (V)	Output Voltage (V)	Output Current (A)	Frequency (kHz) typ	Internal Vref (V) typ	Efficiency (%)	Standby Quiescent Current (µA) typ	Operating Ambient Temp Range (°C)	Features							Available Packages
									Enable Pin	Current-Limit Protection	Thermal Shutdown	Adjustable Output Voltage	UnderVoltage Lockout	Programmable Soft-Start	Power Good	
AP3402	2.7~5.5	0.6~5.5	2	1,000	0.6	95	90	-40 to +85	Y	Y	Y	Y	Y	-	Y	TSOT26
AP3419	2.7~5.5	0.6~5.5	2	1,000	0.6	95	90	-40 to +85	Y	Y	Y	Y	Y	-	-	TSOT26
AP3429/A	2.7~5.5	0.6~5.5	2	1,000	0.6	95	90	-40 to +85	Y	Y	Y	Y	Y	-	-	TSOT25

To find out more information:

Synchronous Rectified Step up Converter Web page : http://diodes.com/catalog/buck_converter_57/

Ordering Information

Device	Packaging	Identification Code	Reel Size	Quantity
AP3402KTTR-G1	TSOT26	GND	7"	3,000
AP3419KTTR-G1	TSOT26	L8J	7"	3,000
AP3429AKTTR-G1	TSOT25	L2E	7"	3,000
AP3429KTTR-G1	TSOT25	L2F	7"	3,000