



New Product
Announcement

AL6562A

Power Factor Correction (PFC) Controller with Enable/Disable Control

The AL6562A is a current mode Power Factor Correction controller designed for operating in Transition Mode. With a superior linear performance multiplier, it ensures the device operates over a wide input voltage range with superior low THD (Total Harmonics Distortion). The output voltage is controlled by means of an error amplifier and a precise (1.5% @ $T_j = +25^\circ\text{C}$) internal voltage reference.

The AL6562A meets stringent energy-saving standards with low startup current and operates with low current consumption when entering into standby mode.

Adjustable OVP circuitry increases system robustness, allowing the device to withstand transient caused at startup and during load disconnects. Available in SO8 package.



The Diodes Advantage

The AL6562A provides a simple, high-power factor solution for LED driver power supplies with an 'Enable/Disable' control, offering design flexibility and low standby power loss

▪ **Industry Standard Pin Configuration**

Can replace most of existing transition mode PFC solutions with limited change

▪ **Low Startup, Operating and Quiescent Currents**

Can meet stringent energy-saving standards

▪ **Enable/Disable Function on INV Input**

Offers design flexibility for power on sequence and standby power loss optimization

▪ **Boundary Conduction Mode (BCM) Operation**

Achieves higher conversion efficiency and reduced EMI issues with fewer components

▪ **Adjustable Output Overvoltage Protection (OVP)**

Increases system robustness

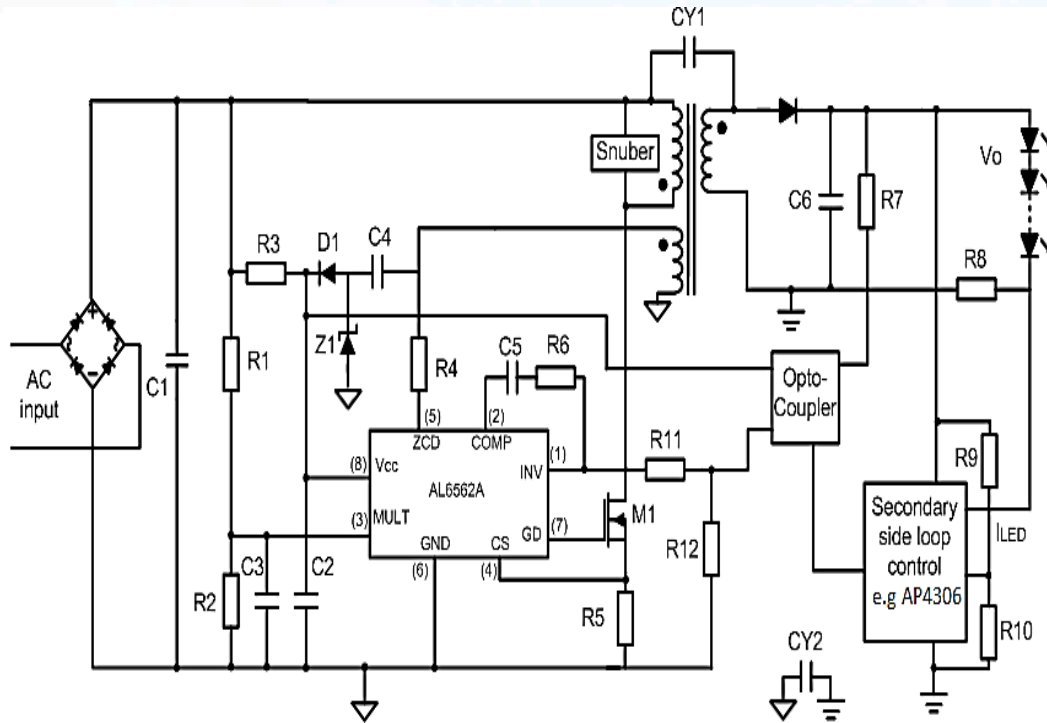
Applications

- LED Drivers
- LED and Fluorescent Tube Ballasts
- PFC pre-regulators for: SMPS/adapters/chargers



**New Product
Announcement**
.....
AL6562A

Typical Application: PFC Single Stage Flyback LED Driver



Diodes Power Factor Correction Controller IC

| Part Number | Min. Input Voltage | Max. Input Voltage | Reference Accuracy | Efficiency | Junction Temperature Range | Enable/Disable | Topology | Package Outline | Comments |
|-------------|--------------------|--------------------|--------------------|------------|----------------------------|----------------|---------------|-----------------|--|
| | V | V | % | % | °C | | | | |
| AL6562A | 12 | 24 | +/-1.5 | 90 | -40 ~ 125 | Y | Boost/Flyback | SO-8 | Transition Mode PFC Controller with Enable/Disable Control |
| AL6562 | 12 | 24 | +/-1.5 | 90 | -40 ~ 125 | N | Boost/Flyback | SO-8 | Transition Mode PFC Controller |

Ordering Information

| Part Number | Package | Package Code | 13" Tape and Reel | |
|-------------|---------|--------------|-------------------|--------------------|
| | | | Quantity | Part Number Suffix |
| AL6562AS-13 | SO-8 | S | 2,500/Tape & Reel | -13 |