



3A Low Dropout Linear Regulator with Ultra Low Adjust Pin Current

The AZ2085 series is a low dropout positive voltage regulators with a typical dropout of 1.2V at 3A of load current.

The device features on-chip thermal shutdown. It also includes a bandgap reference and a current limiting circuit.

The AZ2085 is available in a adjustable version.

The adjustable version can set the output voltage with two external resistors.

The AZ2085 series is available in standard packages of TO-252-2



The Diodes Advantage

The AZ2085 is a Bipolar LDO with 3A output current capacity which offers wide input range and suitable for multiple power systems.

- **Wide Input Range**

AZ2085 Bipolar process offers wide input voltage range.

- **Low Dropout Voltage: Typical 1.2V at 3A**

Can meet low dropout applications

- **Adjust Pin Current: 6 μ A (Typ)**

Power saving

- **Available in adjustable version**

Adjustable version can set output voltage flexibly with two external resistors

- **Current Limiting and Thermal Protection**

Provides protection against any condition of excessive junction temperature

- **Compatible with Low ESR Ceramic Capacitor**

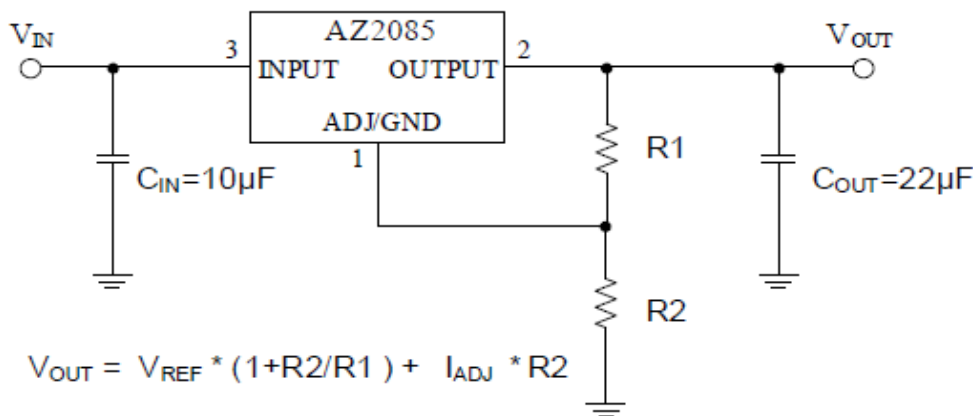
Maximum design flexibility



New Product Announcement

AZ2085

Typical Application Schematic



Product Portfolio

Part Number	V _{IN}	V _{OUT}	I _{OUT}	V _{DROPOUT} @ full load(V)	I _{ADJ}	Package
	(V)	(V)	(A)		(µA)	
AZ2085	up to 12	ADJ(1.25)	3	1.2	6	TO-252-2

To find out more information:

Product page: http://www.diodes.com/catalog/single_idos_66/

Ordering Information

Device	Packaging	Marking ID	Reel Size	Quantity
AZ2085D-ADJTRG1	TO252-2	AZ2085D-ADJG1	13"	2500

All variants are in packages that are "Green" Molding Compound (No Br, Sb) with Lead Free Finish/RoHS Compliant (Note 1)

Notes:1. EU Directive 2002/95/EC (RoHS). All applicable RoHS exemptions applied, see EU Directive 2002/95/EC Annex Notes

2 Codes for date coding on part marks

Y Year 0-9

YY Year 08, 09 etc

W A-Z week 1-26 a-z week 27-53

WW Week 01-52

X A-Z: Green