



# New Product Announcement

.....

## SE555Q

## Automotive Compliant '555 Timers

The SE555Q is an Automotive Compliant version of the '555 timer IC. It's qualified to AEC-Q100 Grade 1 and is capable of operating over the -40 to 125°C temperature range.

It's capable of operating in monostable and astable modes of operation, the periods and duty cycles set by two external resistors and a single external capacitor.

Its output is capable of sinking or sourcing current up to 200mA. Operation is specified for input voltages of 4.5V to 15V. With a 5-V supply, its output levels are compatible with TTL inputs.



### The Diodes Advantage

**Automotive Compliant Timer for use in Automotive applications.**

- **Automotive Compliant**  
Supports PPAP documents.
- **Qualified to AEC-Q100 Grade 1 (-40~125C)**  
Meets the wide operating temperature range of most Automotive applications
- **Wide operating voltage: 4.5V to 15V**  
Covers 5V, 9V and 12V power rails
- **Astable or monostable operation with adjustable duty cycle**
- **TTL compatible output sources and sinks up to 200mA**

### Applications

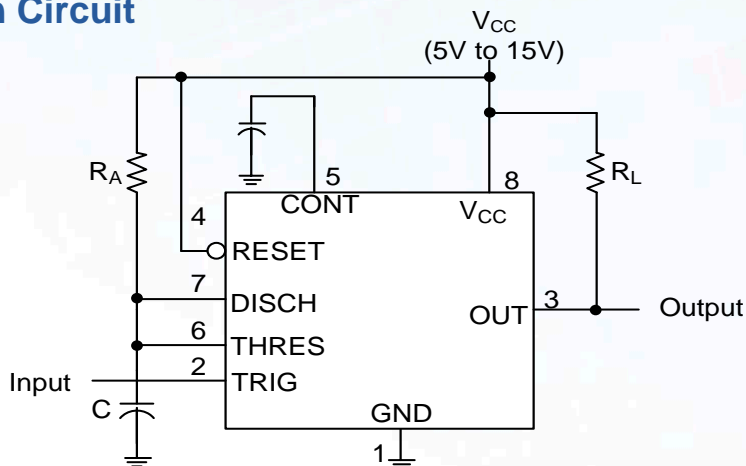
- Car horn
- Automotive exterior lighting (stop lights, rear combination lights, turn lights, etc.)



# New Product Announcement

## SE555Q

### Typical Application Circuit



### Automotive Compliant '555 Product Timer

Part Number	Maximum Frequency (MHz)	Maximum Output Rise Time (ns)	Supply Current V <sub>CC</sub> =5V		Min Operating Input Voltage (V)	Max Operating Input Voltage (V)	Ambient Operating Temperature (°C)	Package
			Output Low (mA)	Output High (mA)				
SE555QS-13	0.1	300	3	2	4.5	15	-40-125	SO-8

#### To find out more information:

Product page:

<https://www.diodes.com/products/connectivity-and-timing/clock-ics/timer-ics/part/SE555Q>

Datasheet:

<http://www.diodes.com/files/datasheets/SE555Q.pdf>

### Ordering Information

Part Number	Package Code	Packaging	Ambient Temperature Range (°C)	13" Tape and Reel	
				Quantity per reel	Reel Size Suffix
SE555QS-13	S	SO-8	-40 to 125	2,500	-13