



## SM8/SOT223/SOT89/DPak/TO220 soft solder ICP Analysis Note

The appended ICP Analysis reports demonstrate compliance with EC directives 2002/95/EC (Restriction of the use of certain hazardous substances "RoHS") and the 24<sup>th</sup> amendment to 76/769/EEC (Restrictions on the marketing and use of certain dangerous substances and preparations).

This analysis was performed to independently verify that the content of lead, mercury, cadmium, hexavalent chromium, polybrominated biphenyls (PBB), and polybrominated diphenyl ethers (PDBE) present is within the permitted levels set.

**Note 1:** This report is a composite of the reports for the individual, homogenous parts of the product. The table below is a summary of the data in the following pages, and indicates the concentrations that would be present if the analysis had been performed on a whole device.

**Note 2:** The die attach material is a solder alloy with >85% lead as its main constituent. This lead content is not included in the table below, but is reported on the relevant page. The die attach solder is exempted from the RoHS Directive in clause 7 and is wholly contained within the device.

Zetex makes no warranty, representation or guarantee regarding the suitability of this information or other data provided by Zetex on environmentally hazardous substances, nor does Zetex assume any liability arising from the use of this information and specifically disclaims any and all consequential and incidental damages.

K. Clithero  
Group Quality Manager

RoHS Substance	Result (ppm)
Lead	15
Mercury	Not detected
Cadmium	Not detected
Hexavalent Chromium	Not detected
Polybrominated Biphenyls (PBB)	Not detected
Polybrominated Diphenyl Ethers (PDBE)	Not detected

This publication is issued to provide outline information only which (unless agreed by the Company in writing) may not be used, applied or reproduced for any purpose or form part of any order or contract or be regarded as a representation relating to the products or services concerned. The Company reserves the right to alter without notice the specification, design, price or conditions of supply of any product or service.

### Sales offices

#### The Americas

3050 E. Hillcrest Drive  
Westlake Village,  
CA 91362-3154  
Tel: (+1) 805 446 4800  
Fax: (+1) 805 446 4850

#### Europe

Kustermannpark  
Balanstraße 59,  
D-81541 München  
Germany  
Tel: (+49) 894 549 490  
Fax: (+49) 894 549 4949

#### Taiwan

7F, No. 50,  
Min Chuan Road  
Hsin-Tien  
Taipei, Taiwan  
Tel: (+886) 289 146 000  
Fax: (+886) 289 146 639

#### Shanghai

Rm. 606, No.1158  
Changning Road  
Shanghai, China  
Tel: (+86) 215 241 4882  
Fax: (+86) 215 241 4891

#### Shenzhen

Room A1103-04,  
ANLIAN Plaza, #4018  
Jintian Road  
Futian CBD,  
Shenzhen, China  
Tel: (+86) 755 882 849 88  
Fax: (+86) 755 882 849 99

#### Korea

6 Floor, Changhwa B/D,  
1005-5 Yeongtong-dong,  
Yeongtong-gu, Suwon-si,  
Gyeonggi-do,  
Korea 443-813  
Tel: (+82) 312 731 884  
Fax: (+82) 312 731 885

Diodes Zetex products are distributed worldwide. For details, see <http://www.zetex.com> & <http://www.diodes.com>

# Test Report

No. : CE/2008/49068    Date : 2008/05/08    Page : 1 of 4

ZETEX SEMICONDUCTORS PLC  
ZETEX TECHNOLOGY PARK, CHADDERTON, OLDHAM. OL9 9LL. UNITED  
KINGDOM



The following sample(s) was/were submitted and identified by/on behalf of the client as :

Sample Description : WAFER  
Buyer/Order No. : 65637  
Sample Receiving Date : 2008/04/30  
Testing Period : 2008/04/30 TO 2008/05/08

=====  
Test Result(s) : Please refer to next page(s).

**Chenyu Kung / Operation Manager**  
**Signed for and on behalf of**  
**SGS TAIWAN LTD.**  
**Chemical Laboratory – Taipei**

# Test Report

No. : CE/2008/49068 Date : 2008/05/08 Page : 2 of 4

ZETEX SEMICONDUCTORS PLC  
 ZETEX TECHNOLOGY PARK, CHADDERTON, OLDHAM. OL9 9LL. UNITED  
 KINGDOM



## Test Result(s)

PART NAME NO.1 : WAFER

Test Item (s):	Unit	Method	MDL	Result
				No.1
Cadmium (Cd)	mg/kg	With reference to IEC 62321/2nd CDV (111/95/CDV). Determination of Cadmium by ICP-AES.	2	n.d.
Lead (Pb)	mg/kg	With reference to IEC 62321/2nd CDV (111/95/CDV). Determination of Lead by ICP-AES.	2	n.d.
Mercury (Hg)	mg/kg	With reference to IEC 62321/2nd CDV (111/95/CDV). Determination of Mercury by ICP-AES.	2	n.d.
Hexavalent Chromium Cr(VI) by alkaline extraction	mg/kg	With reference to IEC 62321/2nd CDV (111/95/CDV). Determination of Hexavalent Chromium for non-metallic samples by UV/Vis Spectrometry.	2	n.d.
Antimony (Sb)	mg/kg	With reference to US EPA Method 3050B for Antimony Content. Analysis was performed by ICP-AES.	2	n.d.
Halogen-Chlorine (Cl) (CAS No.: 007782-50-5)	mg/kg	With reference to BS EN 14582:2007. Analysis was performed by IC method for Chlorine content.	50	n.d.
Halogen-Bromine (Br) (CAS No.: 007726-95-6)	mg/kg	With reference to BS EN 14582:2007. Analysis was performed by IC method for Bromine content.	50	n.d.

# Test Report

No. : CE/2008/49068 Date : 2008/05/08 Page : 3 of 4

ZETEX SEMICONDUCTORS PLC  
 ZETEX TECHNOLOGY PARK, CHADDERTON, OLDHAM. OL9 9LL. UNITED  
 KINGDOM



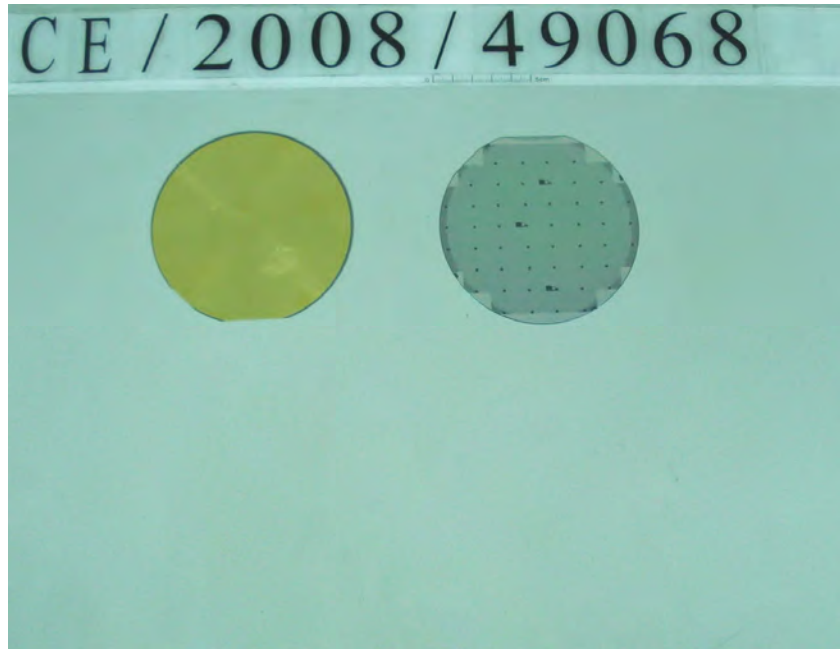
Test Item (s):	Unit	Method	MDL	Result
				No.1
<b>Sum of PBBs</b>	mg/kg	With reference to IEC 62321/2nd CDV (111/95/CDV). Determination of PBB and PBDE by GC/MS.	-	n.d.
Monobromobiphenyl			5	n.d.
Dibromobiphenyl			5	n.d.
Tribromobiphenyl			5	n.d.
Tetrabromobiphenyl			5	n.d.
Pentabromobiphenyl			5	n.d.
Hexabromobiphenyl			5	n.d.
Heptabromobiphenyl			5	n.d.
Octabromobiphenyl			5	n.d.
Nonabromobiphenyl			5	n.d.
Decabromobiphenyl			5	n.d.
<b>Sum of PBDEs (Mono to Nona) (Note 4)</b>			-	n.d.
Monobromodiphenyl ether			5	n.d.
Dibromodiphenyl ether			5	n.d.
Tribromodiphenyl ether			5	n.d.
Tetrabromodiphenyl ether			5	n.d.
Pentabromodiphenyl ether			5	n.d.
Hexabromodiphenyl ether			5	n.d.
Heptabromodiphenyl ether			5	n.d.
Octabromodiphenyl ether			5	n.d.
Nonabromodiphenyl ether			5	n.d.
Decabromodiphenyl ether			5	n.d.
<b>Sum of PBDEs (Mono to Deca)</b>			-	n.d.

- Note :
1. mg/kg = ppm
  2. n.d. = Not Detected
  3. MDL = Method Detection Limit
  4. According to 2005/717/EC DecaBDE is exempt.
  5. " - " = Not Regulated

## Test Report

No. : CE/2008/49068    Date : 2008/05/08    Page : 4 of 4

ZETEX SEMICONDUCTORS PLC  
ZETEX TECHNOLOGY PARK, CHADDERTON, OLDHAM. OL9 9LL. UNITED  
KINGDOM



\*\* End of Report \*\*

# Test Report

No. :KA/2008/10990A-01 Date: 2008/01/25 Page: 1 of 6

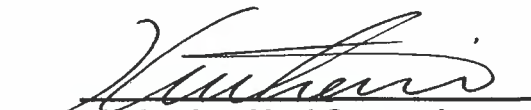


ASM HK  
4F, WATSON CENTRE, 16 KUNG YIP ST., KWAI CHUNG, HONG KONG

The following sample(s) was/were submitted and identified by/on behalf of the client as :

Sample Description : A194 ALLOY  
Lot No. : 080002  
Style/Item No. : BROWN FOR Cu ALLOY  
Color : COPPER  
Sample Receiving Date : 2008/01/15  
Testing Period : 2008/01/15 TO 2008/1/25

=====  
**Test Requested** : In accordance with the RoHS Directive 2002/95/EC, and its amendment directives.  
**Test Method** : With reference to IEC 62321, Ed.1 111/54/CDV Procedures for the Determination of Levels of Regulated Substances in Electrotechnical Products  
: (1) Determination of Cadmium by ICP-AES.  
: (2) Determination of Mercury by ICP-AES.  
: (3) Determination of Lead by ICP-AES.  
: (4) Determination of Hexavalent Chromium for metallic samples by Spot test / Colorimetric Method.  
: (5) Determination of PBB and PBDE by GC/MS.  
**Test Result(s)** : Please refer to next page(s).  
**Conclusion** : Based on the performed tests on submitted samples, the result **comply with** the RoHS Directive 2002/95/EC and its subsequent amendments.

  
**Katherine Ho / Supervisor**  
**Signed for and on behalf of**  
**SGS Taiwan Limited**

# Test Report

No. :KA/2008/10990A-01 Date: 2008/01/25 Page: 2 of 6



ASM HK  
4F, WATSON CENTRE, 16 KUNG YIP ST., KWAI CHUNG, HONG KONG

Test results by chemical method (Unit: mg/kg)

Test Item (s):	Method (Refer to)	Result	MDL	RoHS Limit
		No.1		
Cadmium (Cd)	(1)	n.d.	2	100
Mercury (Hg)	(2)	n.d.	2	1000
Lead (Pb)	(3)	14.5	2	1000
Hexavalent Chromium Cr(VI) by Spot test / boiling water extraction	(4)	Negative	See Note 5	#
<b>Sum of PBBs</b>	(5)	n.d.	-	1000
Monobromobiphenyl		n.d.	5	-
Dibromobiphenyl		n.d.	5	-
Tribromobiphenyl		n.d.	5	-
Tetrabromobiphenyl		n.d.	5	-
Pentabromobiphenyl		n.d.	5	-
Hexabromobiphenyl		n.d.	5	-
Heptabromobiphenyl		n.d.	5	-
Octabromobiphenyl		n.d.	5	-
Nonabromobiphenyl		n.d.	5	-
Decabromobiphenyl		n.d.	5	-
<b>Sum of PBDEs (Mono to Nona)(Note 4)</b>		n.d.	-	1000
Monobromobiphenyl ether		n.d.	5	-
Dibromobiphenyl ether		n.d.	5	-
Tribromobiphenyl ether		n.d.	5	-
Tetrabromobiphenyl ether		n.d.	5	-
Pentabromobiphenyl ether		n.d.	5	-
Hexabromobiphenyl ether		n.d.	5	-
Heptabromobiphenyl ether		n.d.	5	-
Octabromobiphenyl ether		n.d.	5	-
Nonabromobiphenyl ether		n.d.	5	-
Decabromobiphenyl ether	n.d.	5	-	
<b>Sum of PBDEs (Mono to Deca)</b>	n.d.	-	-	

**TEST PART DESCRIPTION:**

NO.1 : A194 ALLOY

This Test Report is issued by the Company subject to its General Conditions of Service printed overleaf or available on request and accessible at [www.sgs.com](http://www.sgs.com). Attention is drawn to the limitations of liability, indemnification and jurisdictional issues defined therein. Unless otherwise stated the results shown in this test report refer only to the sample(s) tested. This test report cannot be reproduced, except in full, without prior written permission of the Company. Any unauthorized alteration, forgery or falsification of the content or appearance of this report is unlawful and offenders may be prosecuted to the fullest extent of the law. 此報告是遵循本公司訂定之通用服務條款所製作發放，請注意此條款列印於背面，亦可在[www.sgs.com](http://www.sgs.com)中查閱。將本公司之義務，免責，管轄權皆明確規範之。除非另有說明，此報告結果僅對檢驗之樣品負責。本報告未經本公司書面許可，不可部份複製。對本報告內容或外觀之任何未經授權之變更、偽造、竄改皆屬非法，違犯者將會被依法追訴。

TW 6167176



# Test Report

No. :KA/2008/10990A-01 Date: 2008/01/25 Page: 3 of 6



ASM HK  
4F, WATSON CENTRE, 16 KUNG YIP ST., KWAI CHUNG, HONG KONG

- Note :
1. mg/kg = ppm
  2. n.d. = Not Detected
  3. MDL = Method Detection Limit
  4. According to 2005/717/EC DecaBDE is exempt.
  5. Spot-test:
    - Negative = Absence of Cr(VI) coating / surface layer, Positive = Presence of Cr(VI) coating / surface
    - (The tested sample should be further verified by boiling-water-extraction method if the spot test result cannot be confirmed.)
  - Boiling-water-extraction:
    - Negative = Absence of Cr(VI) coating / surface layer,
    - Positive = Presence of Cr(VI) coating / surface layer the detected concentration in boiling-water-extraction solution is equal or greater than 0.02 mg/kg with 50 cm<sup>2</sup> sample surface area.
  6. # : Positive indicates the presence of Hexavalent Chromium on the tested areas and result be regarded as not comply with RoHS requirement.
    - Negative indicates the absence of Hexavalent Chromium on the tested areas and result be regarded as comply with RoHS requirement.
  7. " - " = Not Regulated

This Test Report is issued by the Company subject to its General Conditions of Service printed overleaf or available on request and accessible at [www.sgs.com](http://www.sgs.com). Attention is drawn to the limitations of liability, indemnification and jurisdictional issues defined therein. Unless otherwise stated the results shown in this test report refer only to the sample(s) tested. This test report cannot be reproduced, except in full, without prior written permission of the Company. Any unauthorized alteration, forgery or falsification of the content or appearance of this report is unlawful and offenders may be prosecuted to the fullest extent of the law. 此報告是遵循本公司訂定之通用服務條款所製作發放，請注意此條款列印於背面，亦可在[www.sgs.com](http://www.sgs.com)中查閱。將本公司之義務，免責，管轄權皆明確規範之。除非另有說明，此報告結果僅對檢驗之樣品負責。本報告未經本公司書面許可，不可部份複製。對本報告內容或外觀之任何未經授權之變更、偽造、竄改皆屬非法，違犯者將會被依法追訴。

TW 6167215



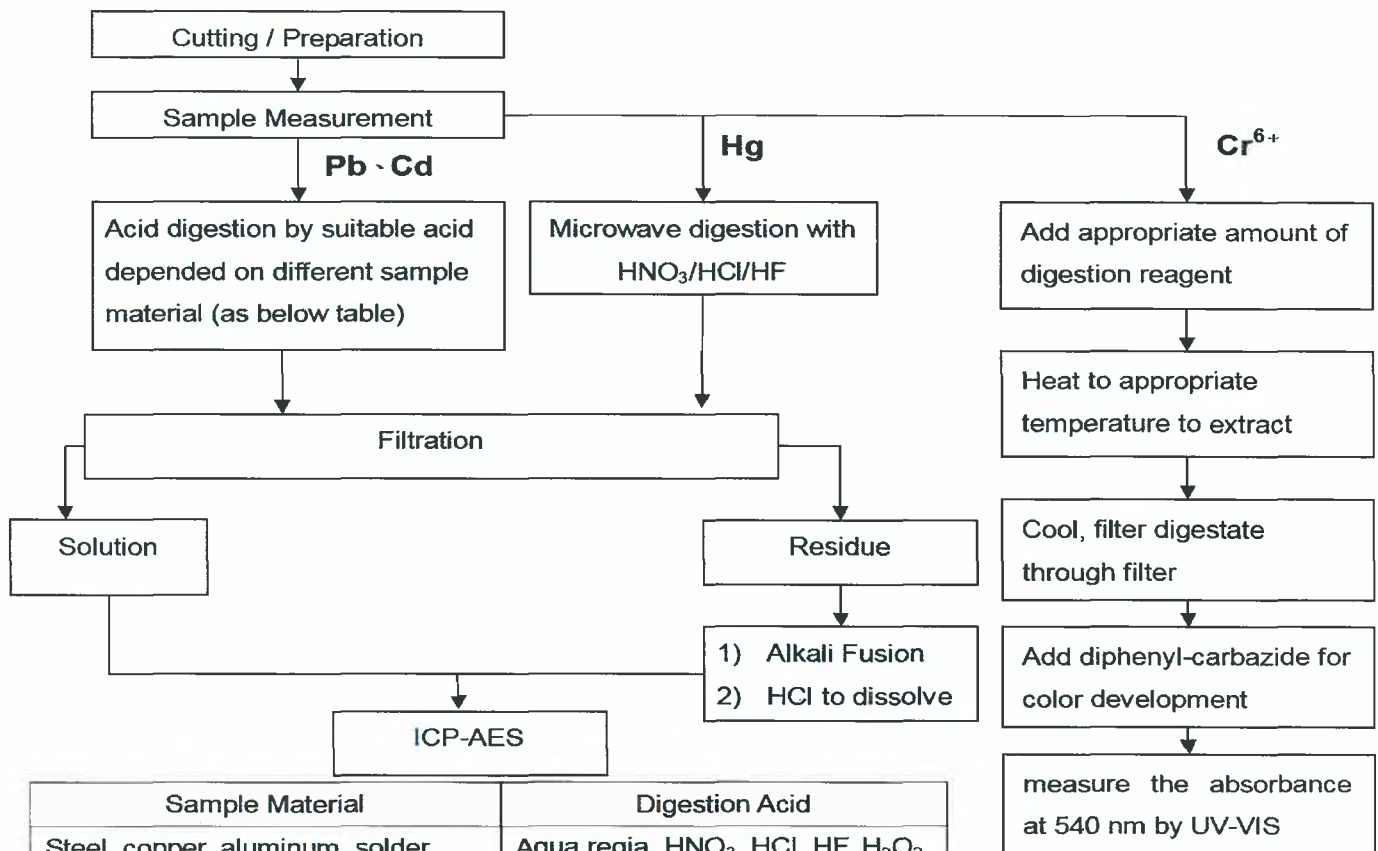
# Test Report

No. :KA/2008/10990A-01 Date: 2008/01/25 Page: 4 of 6



ASM HK  
4F, WATSON CENTRE, 16 KUNG YIP ST., KWAI CHUNG, HONG KONG

- 1) These samples were dissolved totally by pre-conditioning method according to below flow chart.  
(Cr<sup>6+</sup> test method excluded)
- 2) Name of the person who made measurement: Hungming Li
- 3) Name of the person in charge of measurement: George Huang



Sample Material	Digestion Acid
Steel, copper, aluminum, solder	Aqua regia, HNO <sub>3</sub> , HCl, HF, H <sub>2</sub> O <sub>2</sub>
Glass	HNO <sub>3</sub> /HF
Gold, platinum, palladium, ceramic	Aqua regia
Silver	HNO <sub>3</sub>
Plastic	H <sub>2</sub> SO <sub>4</sub> , H <sub>2</sub> O <sub>2</sub> , HNO <sub>3</sub> , HCl
Others	Any acid to total digestion

This Test Report is issued by the Company subject to its General Conditions of Service printed overleaf or available on request and accessible at [www.sgs.com](http://www.sgs.com). Attention is drawn to the limitations of liability, indemnification and jurisdictional issues defined therein. Unless otherwise stated the results shown in this test report refer only to the sample(s) tested. This test report cannot be reproduced, except in full, without prior written permission of the Company. Any unauthorized alteration, forgery or falsification of the content or appearance of this report is unlawful and offenders may be prosecuted to the fullest extent of the law. 此報告是遵循本公司訂定之通用服務條款所製作發放，請注意此條款列印於背面，亦可在[www.sgs.com](http://www.sgs.com)中查閱。將本公司之義務，免責，管轄權皆明確規範之。除非另有說明，此報告結果僅對檢驗之樣品負責。本報告未經本公司書面許可，不可部份複製。對本報告內容或外觀之任何未經授權之變更、偽造、竄改皆屬非法，違犯者將會被依法追訴。

TW 6167214

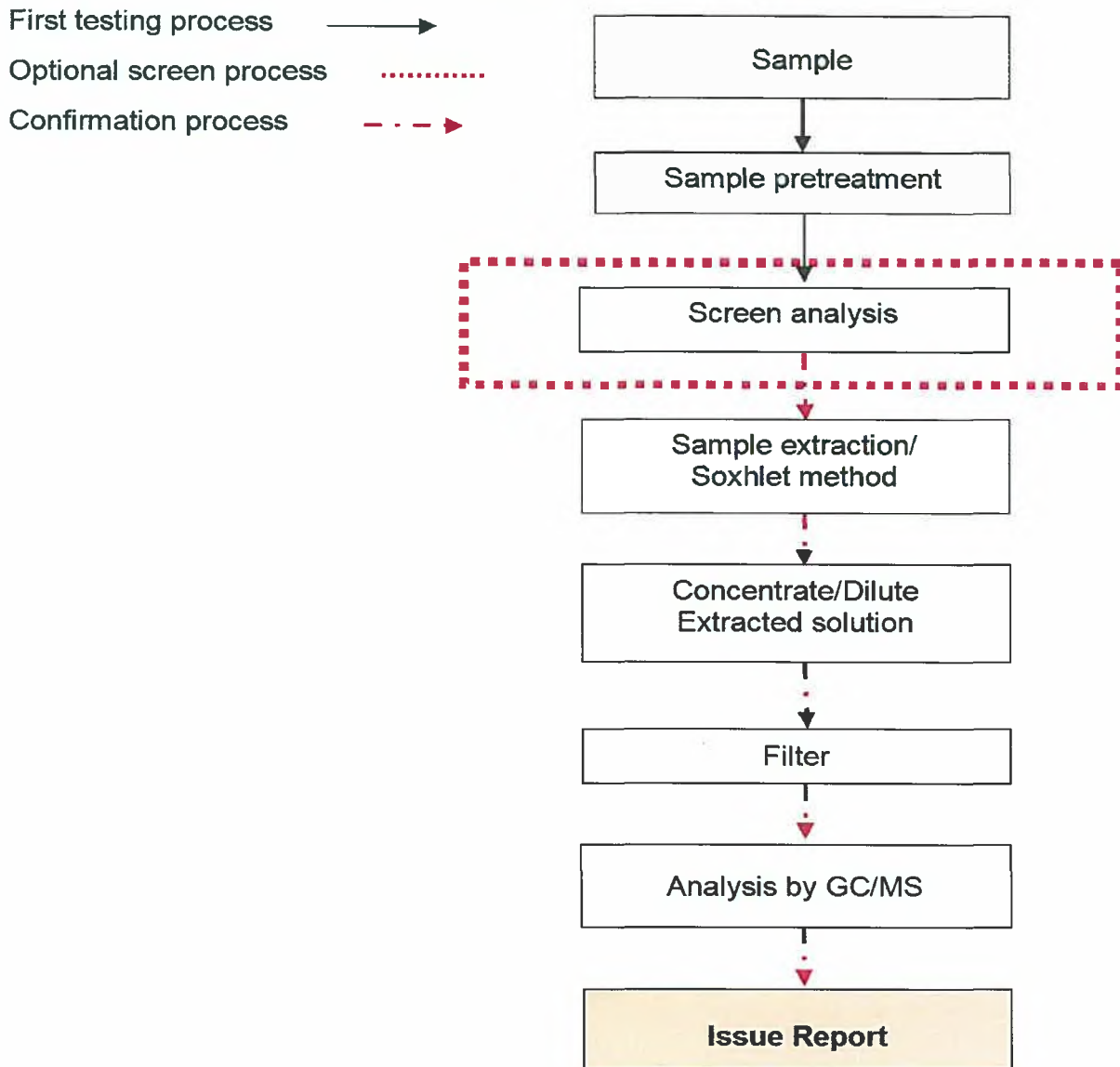
# Test Report

No. :KA/2008/10990A-01      Date: 2008/01/25      Page: 5 of 6



ASM HK  
4F, WATSON CENTRE, 16 KUNG YIP ST., KWAI CHUNG, HONG KONG

## PBB/PBDE analytical FLOW CHART



This Test Report is issued by the Company subject to its General Conditions of Service printed overleaf or available on request and accessible at [www.sgs.com](http://www.sgs.com). Attention is drawn to the limitations of liability, indemnification and jurisdictional issues defined therein. Unless otherwise stated the results shown in this test report refer only to the sample(s) tested. This test report cannot be reproduced, except in full, without prior written permission of the Company. Any unauthorized alteration, forgery or falsification of the content or appearance of this report is unlawful and offenders may be prosecuted to the fullest extent of the law. 此報告是遵循本公司訂定之通用服務條款所製作發放，請注意此條款列印於背面，亦可在[www.sgs.com](http://www.sgs.com)中查閱。將本公司之義務，免責，管轄權皆明確規範之。除非另有說明，此報告結果僅對檢驗之樣品負責。本報告未經本公司書面許可，不可部份複製。對本報告內容或外觀之任何未經授權之變更、偽造、竄改皆屬非法，違犯者將會被依法追訴。

TW 6167213

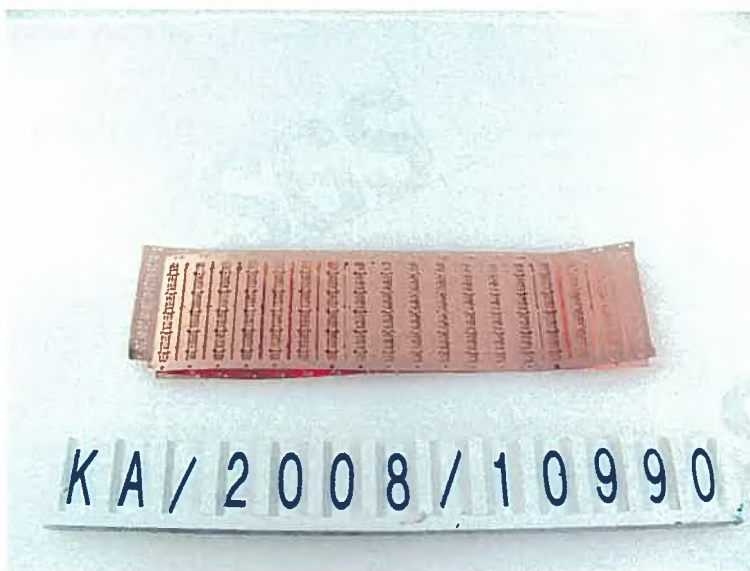
## Test Report

No. :KA/2008/10990A-01 Date: 2008/01/25 Page: 6 of 6



ASM HK

4F, WATSON CENTRE, 16 KUNG YIP ST., KWAI CHUNG, HONG KONG



\*\* End of Report \*\*

This Test Report is issued by the Company subject to its General Conditions of Service printed overleaf or available on request and accessible at [www.sgs.com](http://www.sgs.com). Attention is drawn to the limitations of liability, indemnification and jurisdictional issues defined therein. Unless otherwise stated the results shown in this test report refer only to the sample(s) tested. This test report cannot be reproduced, except in full, without prior written permission of the Company. Any unauthorized alteration, forgery or falsification of the content or appearance of this report is unlawful and offenders may be prosecuted to the fullest extent of the law. 此報告是遵循本公司訂定之通用服務條款所製作發放，請注意此條款列印於背面，亦可在[www.sgs.com](http://www.sgs.com)中查閱。將本公司之義務，免責，管轄權皆明確規範之。除非另有說明，此報告結果僅對檢驗之樣品負責。本報告未經本公司書面許可，不可部份複製。對本報告內容或外觀之任何未經授權之變更、偽造、竄改皆屬非法，違犯者將會被依法追訴。

TW 6167212

## Test Report

No. SH8050865/CHEM

Date: Apr. 16, 2008

Page 1 of 5

HERAEUS ZHAOYUAN PRECIOUS METAL MATERIALS CO., LTD/ HERAEUS ZHAOYUAN (CHANGSHU) ELECTRONIC MATERIAL CO., LTD  
NO.238 LINGLONG ROAD, ZHAOYUAN SHANGDONG/ NO.248 HUANGHE ROAD CHANGSHU, JIANGSU

The following sample(s) was/were submitted and identified by/on behalf of the client as:

Sample Name : GOLD BONDING WIRE HD  
SGS Ref No. : 10960194  
Main Substance : GOLD

Sample Receiving Date : Apr.15, 2008  
Testing Period : Apr.15 – 16, 2008

Test Requested : In accordance with the RoHS Directive 2002/95/EC, and its amendment directives.

Test Method : With reference to IEC 62321/2<sup>nd</sup> CDV (111/95/CDV)  
Procedures for the Determination of Levels of Regulated Substances in  
Electrotechnical Products  
(1) Determination of Cadmium by ICP.  
(2) Determination of Lead by ICP  
(3) Determination of Mercury by ICP.  
(4) Determination of Hexavalent Chromium by Spot test / Colorimetric Method.  
(5) Determination of PBBs and PBDEs by GC/MS.

Test Results : Please refer to next pages

Conclusion : Based on the performed tests on submitted samples, the results comply with the  
RoHS Directive 2002/95/EC and its subsequent amendments.

Signed for and on behalf of  
SGS-CSTC Chemical Laboratory



Ella Zhang  
Section Manager

Signed for and on behalf of  
SGS-CSTC Chemical Laboratory



Sandy Hao  
Lab Manager

# Test Report

No. SH8050865/CHEM

Date: Apr. 16, 2008

Page 2 of 5

Test results by chemical method (Unit: mg/kg)

Test Item(s):	Method (refer to)	1	MDL	RoHS Limit
Cadmium(Cd)	(1)	ND	2	100
Lead (Pb)	(2)	ND	2	1000
Mercury (Hg)	(3)	ND	2	1000
Hexavalent Chromium (CrVI) by spot test / boiling-water extraction	(4)	Negative	See Note (5)	#
Sum of PBBs	(5)	ND	-	1000
Monobromobiphenyl		ND	5	-
Dibromobiphenyl		ND	5	-
Tribromobiphenyl		ND	5	-
Tetrabromobiphenyl		ND	5	-
Pentabromobiphenyl		ND	5	-
Hexabromobiphenyl		ND	5	-
Heptabromobiphenyl		ND	5	-
Octabromobiphenyl		ND	5	-
Nonabromobiphenyl		ND	5	-
Decabromobiphenyl		ND	5	-
Sum of PBDEs (Note 4)		ND	-	1000
Monobromodiphenyl ether		ND	5	-
Dibromodiphenyl ether		ND	5	-
Tribromodiphenyl ether		ND	5	-
Tetrabromodiphenyl ether		ND	5	-
Pentabromodiphenyl ether		ND	5	-
Hexabromodiphenyl ether		ND	5	-
Heptabromodiphenyl ether		ND	5	-
Octabromodiphenyl ether		ND	5	-
Nonabromodiphenyl ether	ND	5	-	
Decabromodiphenyl ether	ND	5	-	
Sum of PBDEs (Mono to Deca)	ND	-	-	

Test Part Description:

1. Golden metal thread

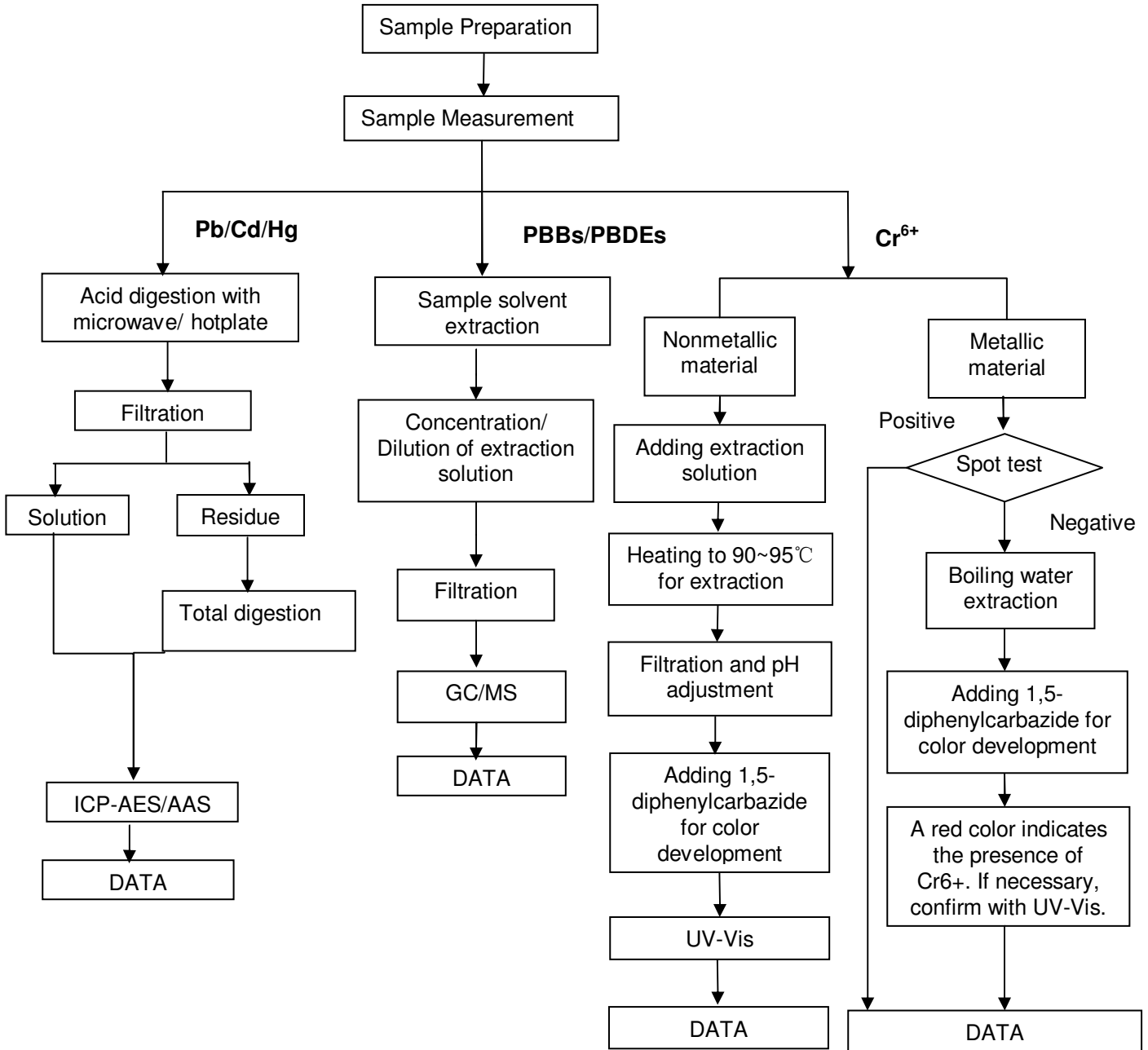
## Note:

- (1) mg/kg = ppm
- (2) ND = Not Detected
- (3) MDL = Method Detection Limit
- (4) Sum of Mono to NonaBDE & according to 2005/717/EC DecaBDE is exempt.
- (5) Spot-test:  
Negative = Absence of CrVI coating, Positive = Presence of CrVI coating;  
(The tested sample should be further verified by boiling-water-extraction method if the spot test result is Negative or cannot be confirmed.)  
Boiling-water-extraction:  
Negative = Absence of CrVI coating  
Positive = Presence of CrVI coating; the detected concentration in boiling-water-extraction solution is equal or greater than 0.02 mg/kg with 50 cm<sup>2</sup> sample surface area.
- (6) # = Positive indicates the presence of Hexavalent Chromium on the tested areas.  
Negative indicates the absence of CrVI on the tested areas.
- (7) "-" = Not Regulated
- (8) The maximum permissible limit is quoted from the document 2005/618/EC amending RoHS directive 2002/95/EC



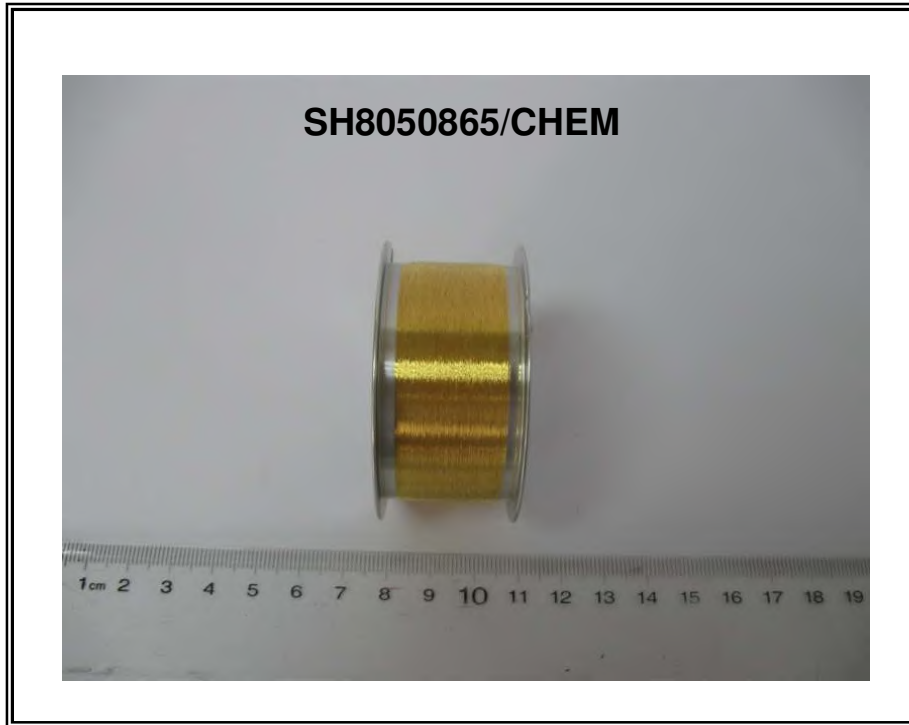
**ATTACHMENTS**

- 1) Name of the person who made measurement: Cathy Cai/George Xu/Diane Wang
- 2) Name of the person in charge of measurement: Terry Wang/Tracy Yue
- 3) These samples were dissolved totally by pre-conditioning method according to below flow chart. (Cr<sup>6+</sup> and PBBs/PBDEs test method excluded)





Sample photo:



SGS authenticate the photo on original report only

\*\*\* End of Report \*\*\*

Umicore Precious Metal (S) Pte Ltd  
No. 2 Corporation Road, #06-16/17 Corporation Place, Singapore 618494

The following sample(s) was/were submitted and identified by/on behalf of the client as:

Sample Description : PbSn5Ag1.5 Solder Wire

Sample Receiving Date : 13-Nov-2008  
Testing Period : 13-Nov-2008 to 20-Nov-2008

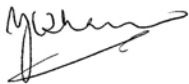
Test Requested : In accordance with the RoHS Directive 2002/95/EC, and its amendment directives.

---

Test Result(s) : Please refer to next page(s).

Conclusion : Based on the performed tests on submitted sample(s), the results **comply with** the RoHS Directive 2002/95/EC and its subsequent amendments.

Signed for and on behalf of  
SGS Testing & Control Services Singapore Pte Ltd



---

Y.C. Tham  
Laboratory Manager

Test Location: 26 Ayer Rajah Crescent, #07-07, Singapore 139944

This document is issued by the Company under its General Conditions of Service accessible at [http://www.sgs.com/terms\\_and\\_conditions.htm](http://www.sgs.com/terms_and_conditions.htm). Attention is drawn to the limitation of liability, indemnification and jurisdiction issues defined therein. Any holder of this document is advised that information contained hereon reflects the Company's findings at the time of its intervention only and within the limits of Client's instructions, if any. The Company's sole responsibility is to its Client and this document does not exonerate parties to a transaction from exercising all their rights and obligations under the transaction documents. Any unauthorized alteration, forgery or falsification of the content or appearance of this document is unlawful and offenders may be prosecuted to the fullest extent of the law. Unless otherwise stated the results shown in this test report refer only to the sample(s) tested and such sample(s) are retained for 30 days only. This document cannot be reproduced except in full, without prior approval of the Company.

**Test Result(s):**

Sample Description : PbSn5Ag1.5 Solder Wire

Test Item(s):	Unit	Method	Results	MDL	RoHS Limit
Cadmium(Cd)	mg/kg	With reference to IEC62321 Ed1 111/95/CDV2. Analysis was performed by ICP/AES	n.d.	2	100
Lead (Pb) <sup>+</sup>	mg/kg	With reference to IEC62321 Ed1 111/95/CDV2. Analysis was performed by ICP/AES	935333	2	1000
Mercury (Hg)	mg/kg	With reference to IEC62321 Ed1 111/95/CDV2. Analysis was performed by ICP/AES	n.d.	2	1000
Hexavalent Chromium (CrVI) (By boiling water extraction)	---	With reference to IEC62321 Ed1 111/95/CDV2. Analysis was performed by Colorimetric Method	Negative	-	#
<b>Sum of PBBs</b>	mg/kg	With reference to IEC 62321, Ed.1 111/95/CDV2. Analysis was performed by GC/MS	<b>n.d.</b>	-	1000
Monobromobiphenyl	mg/kg		n.d.	5	-
Dibromobiphenyl	mg/kg		n.d.	5	-
Tribromobiphenyl	mg/kg		n.d.	5	-
Tetrabromobiphenyl	mg/kg		n.d.	5	-
Hexabromobiphenyl	mg/kg		n.d.	5	-
Pentabromobiphenyl	mg/kg		n.d.	5	-
Heptabromobiphenyl	mg/kg		n.d.	5	-
Octabromobiphenyl	mg/kg		n.d.	5	-
Nonabromobiphenyl	mg/kg		n.d.	5	-
Decabromobiphenyl	mg/kg		n.d.	5	-
<b>Sum of PBDEs</b>	mg/kg		<b>n.d.</b>	-	1000
Monobromodiphenyl ether	mg/kg		n.d.	5	-
Dibromodiphenyl ether	mg/kg		n.d.	5	-
Tribromodiphenyl ether	mg/kg		n.d.	5	-
Tetrabromodiphenyl ether	mg/kg		n.d.	5	-
Pentabromodiphenyl ether	mg/kg		n.d.	5	-
Hexabromodiphenyl ether	mg/kg		n.d.	5	-
Heptabromodiphenyl ether	mg/kg		n.d.	5	-
Octabromodiphenyl ether	mg/kg		n.d.	5	-
Nonabromodiphenyl ether	mg/kg	n.d.	5	-	
Decabromodiphenyl ether ##	mg/kg	n.d.	5	-	

Test Location: 26 Ayer Rajah Crescent, #07-07, Singapore 139944

This document is issued by the Company under its General Conditions of Service accessible at [http://www.sgs.com/terms\\_and\\_conditions.htm](http://www.sgs.com/terms_and_conditions.htm). Attention is drawn to the limitation of liability, indemnification and jurisdiction issues defined therein. Any holder of this document is advised that information contained hereon reflects the Company's findings at the time of its intervention only and within the limits of Client's instructions, if any. The Company's sole responsibility is to its Client and this document does not exonerate parties to a transaction from exercising all their rights and obligations under the transaction documents. Any unauthorized alteration, forgery or falsification of the content or appearance of this document is unlawful and offenders may be prosecuted to the fullest extent of the law. Unless otherwise stated the results shown in this test report refer only to the sample(s) tested and such sample(s) are retained for 30 days only. This document cannot be reproduced except in full, without prior approval of the Company.

- Note:
- (1) mg/kg = ppm ; 0.1wt% = 1000ppm
  - (2) n.d.= Not Detected
  - (3) MDL = Method Detection Limit
  - (4) ## = The exemption of DecaBDE in polymeric application according 2005/717/EC was overruled by the European Court of Justice by its decision of 01.04.2008. Subsequently DecaBDE will be included in the sum of PBDE after 01.07.2008.
  - (5) "-" = Not regulated
  - (6) "---": No unit (Qualitative Test)
  - (7) \* : Exceeds limit
  - (8) # : Positive means the presence of CrVI on the tested areas.  
Negative means the absence of CrVI on the tested areas.

Remarks: Sample received was totally dissolved by preconditioning method.

Lab Analyst(s): Jay and Ray

**+ Exemption: The received sample is exempted under directive 2002/95/EC Annex article 7: Lead in high melting temperature type solders (i.e. tin-lead solder alloys containing more than 85% lead).**

**Sample photo:**

Sample Description : PbSn5Ag1.5 Solder Wire

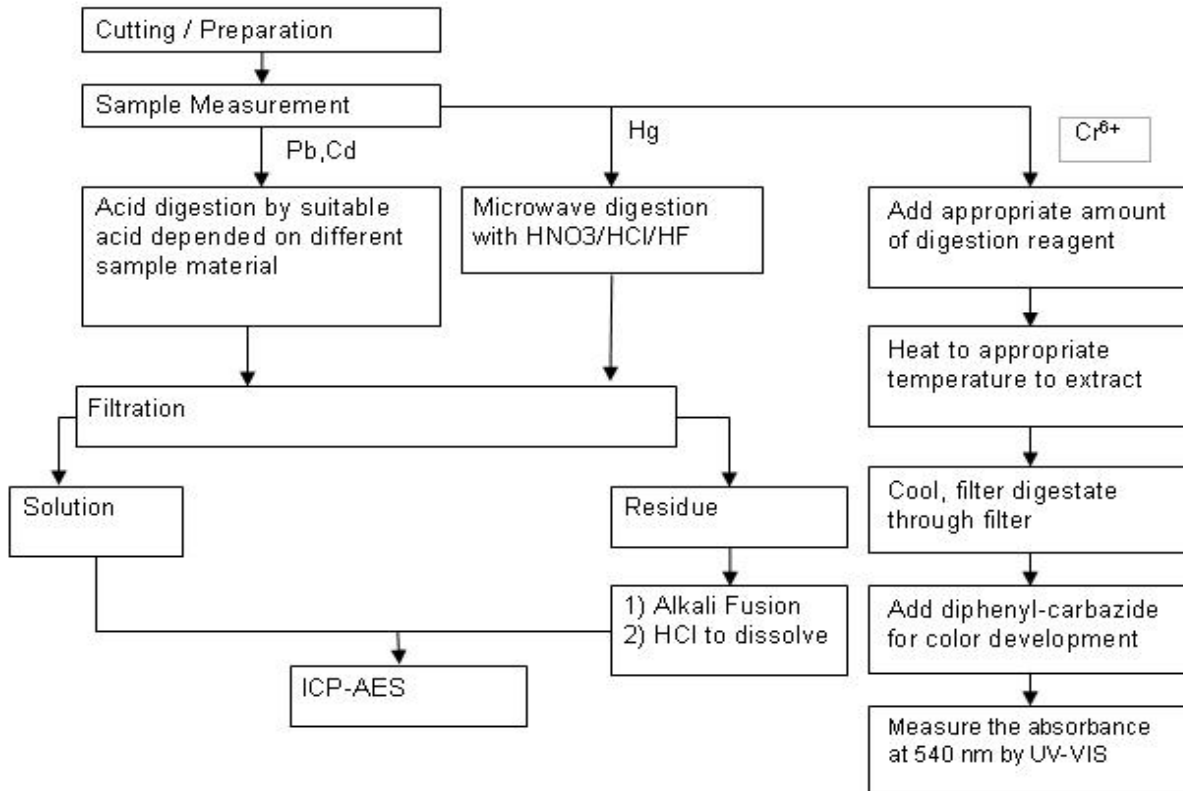
SGS authenticate the photo on original report only



Test Location: 26 Ayer Rajah Crescent, #07-07, Singapore 139944

This document is issued by the Company under its General Conditions of Service accessible at [http://www.sgs.com/terms\\_and\\_conditions.htm](http://www.sgs.com/terms_and_conditions.htm). Attention is drawn to the limitation of liability, indemnification and jurisdiction issues defined therein. Any holder of this document is advised that information contained hereon reflects the Company's findings at the time of its intervention only and within the limits of Client's instructions, if any. The Company's sole responsibility is to its Client and this document does not exonerate parties to a transaction from exercising all their rights and obligations under the transaction documents. Any unauthorized alteration, forgery or falsification of the content or appearance of this document is unlawful and offenders may be prosecuted to the fullest extent of the law. Unless otherwise stated the results shown in this test report refer only to the sample(s) tested and such sample(s) are retained for 30 days only. This document cannot be reproduced except in full, without prior approval of the Company.

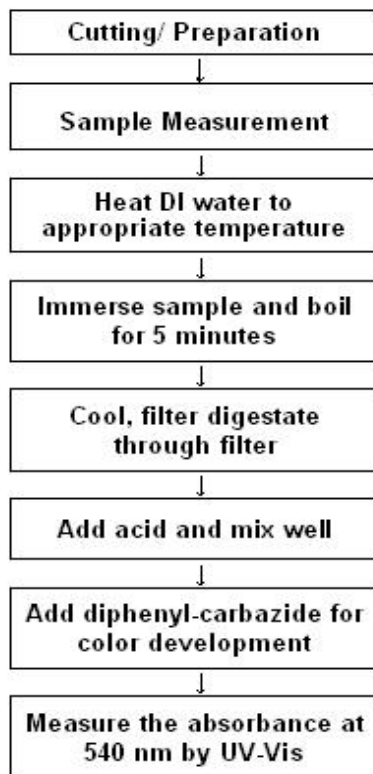
**Process Flow of IEC 62321 (Pb, Cd, Hg & Cr<sup>6+</sup>)**



Test Location: 26 Ayer Rajah Crescent, #07-07, Singapore 139944

This document is issued by the Company under its General Conditions of Service accessible at [http://www.sgs.com/terms\\_and\\_conditions.htm](http://www.sgs.com/terms_and_conditions.htm). Attention is drawn to the limitation of liability, indemnification and jurisdiction issues defined therein. Any holder of this document is advised that information contained hereon reflects the Company's findings at the time of its intervention only and within the limits of Client's instructions, if any. The Company's sole responsibility is to its Client and this document does not exonerate parties to a transaction from exercising all their rights and obligations under the transaction documents. Any unauthorized alteration, forgery or falsification of the content or appearance of this document is unlawful and offenders may be prosecuted to the fullest extent of the law. Unless otherwise stated the results shown in this test report refer only to the sample(s) tested and such sample(s) are retained for 30 days only. This document cannot be reproduced except in full, without prior approval of the Company.

**Process Flow of Cr6+ by boiling water extraction (IEC62321)**

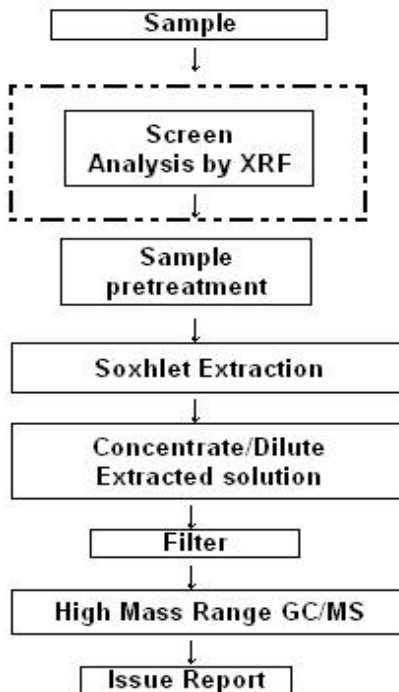


Test Location: 26 Ayer Rajah Crescent, #07-07, Singapore 139944

This document is issued by the Company under its General Conditions of Service accessible at [http://www.sgs.com/terms\\_and\\_conditions.htm](http://www.sgs.com/terms_and_conditions.htm). Attention is drawn to the limitation of liability, indemnification and jurisdiction issues defined therein. Any holder of this document is advised that information contained hereon reflects the Company's findings at the time of its intervention only and within the limits of Client's instructions, if any. The Company's sole responsibility is to its Client and this document does not exonerate parties to a transaction from exercising all their rights and obligations under the transaction documents. Any unauthorized alteration, forgery or falsification of the content or appearance of this document is unlawful and offenders may be prosecuted to the fullest extent of the law. Unless otherwise stated the results shown in this test report refer only to the sample(s) tested and such sample(s) are retained for 30 days only. This document cannot be reproduced except in full, without prior approval of the Company.

**Process Flow of PBBs and PBDEs by GC/MS (IEC 62321)**

First Testing Process → Optional screen process ..... Confirmation process ...→



\*\*\*End of Report\*\*\*

Test Location: 26 Ayer Rajah Crescent, #07-07, Singapore 139944

This document is issued by the Company under its General Conditions of Service accessible at [http://www.sgs.com/terms\\_and\\_conditions.htm](http://www.sgs.com/terms_and_conditions.htm). Attention is drawn to the limitation of liability, indemnification and jurisdiction issues defined therein. Any holder of this document is advised that information contained hereon reflects the Company's findings at the time of its intervention only and within the limits of Client's instructions, if any. The Company's sole responsibility is to its Client and this document does not exonerate parties to a transaction from exercising all their rights and obligations under the transaction documents. Any unauthorized alteration, forgery or falsification of the content or appearance of this document is unlawful and offenders may be prosecuted to the fullest extent of the law. Unless otherwise stated the results shown in this test report refer only to the sample(s) tested and such sample(s) are retained for 30 days only. This document cannot be reproduced except in full, without prior approval of the Company.



## Test Report

No.10111181C/08 (2)

Date: January 22, 2008

Page 1 of 5

Sumitomo Bakelite (S) Pte Ltd  
1 Senoko South Road,  
Singapore 758069

The following sample(s) was/were submitted and identified by/on behalf of the client as:

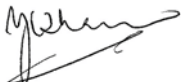
Sample Description : EME-7351 Type LS (8012542)  
Sample Receiving Date : 17 January 2008  
Testing Period : 18 January 2008 to 21 January 2008  
Test Requested : In accordance with the RoHS Directive 2002/95/EC, and its amendment directives.

---

Test Result(s) : Please refer to next page(s).

Conclusion : Based on the performed tests on submitted samples, the results are **compliant** with the limits of RoHS Directive 2002/95/EC and its subsequent amendments.

Signed for and on behalf of  
SGS Testing & Control Services Singapore Pte Ltd



---

Y.C. Tham  
Laboratory Manager

Test Location: 26 Ayer Rajah Crescent, #07-07, Singapore 139944

This document is issued by the Company under its General Conditions of Service accessible at [http://www.sgs.com/terms\\_and\\_conditions.htm](http://www.sgs.com/terms_and_conditions.htm). Attention is drawn to the limitation of liability, indemnification and jurisdiction issues defined therein. Any holder of this document is advised that information contained hereon reflects the Company's findings at the time of its intervention only and within the limits of Client's instructions, if any. The Company's sole responsibility is to its Client and this document does not exonerate parties to a transaction from exercising all their rights and obligations under the transaction documents. Any unauthorized alteration, forgery or falsification of the content or appearance of this document is unlawful and offenders may be prosecuted to the fullest extent of the law. *Unless otherwise stated the results shown in this test report refer only to the sample(s) tested and such sample(s) are retained for 30 days only. This document cannot be reproduced except in full, without prior approval of the Company.*

## Test Report

No.10111181C/08 (2)

Date: January 22, 2008

Page 2 of 5

### Test Result(s):

Sample Description : EME-7351 Type LS (8012542)

Test Item(s):	Unit	Method	Results	MDL	RoHS Limit
Cadmium(Cd)	mg/kg	With reference to IEC 62321, Ed.1 111/54/CDV – Section 12. Analysis was performed by ICP/AES.	n.d.	2	100
Lead (Pb)	mg/kg		n.d.	2	1000
Mercury (Hg)	mg/kg	With reference to IEC 62321, Ed.1 111/54/CDV – Section 10. Analysis was performed by ICP/AES.	n.d.	2	1000
Hexavalent Chromium (CrVI)	mg/kg	With reference to IEC 62321, Ed.1 111/54/CDV – Section 8. Analysis was performed by Colorimetric Method.	Negative	See Note (4)	#
<b>Sum of PBBs</b>	mg/kg	With reference to IEC 62321, Ed.1 111/54/CDV – Section 7. Analysis was performed by GC/MS.	<b>n.d.</b>	-	1000
Monobromobiphenyl	mg/kg		n.d.	5	-
Dibromobiphenyl	mg/kg		n.d.	5	-
Tribromobiphenyl	mg/kg		n.d.	5	-
Tetrabromobiphenyl	mg/kg		n.d.	5	-
Hexabromobiphenyl	mg/kg		n.d.	5	-
Pentabromobiphenyl	mg/kg		n.d.	5	-
Heptabromobiphenyl	mg/kg		n.d.	5	-
Octabromobiphenyl	mg/kg		n.d.	5	-
Nonabromobiphenyl	mg/kg		n.d.	5	-
Decabromobiphenyl	mg/kg		n.d.	5	-
<b>Sum of PBDE (Mono to Nona)(Note 6)</b>	mg/kg		<b>n.d.</b>	-	1000
Monobromodiphenyl ether	mg/kg		n.d.	5	-
Dibromodiphenyl ether	mg/kg	n.d.	5	-	
Tribromodiphenyl ether	mg/kg	n.d.	5	-	
Tetrabromodiphenyl ether	mg/kg	n.d.	5	-	
Pentabromodiphenyl ether	mg/kg	n.d.	5	-	
Hexabromodiphenyl ether	mg/kg	n.d.	5	-	
Heptabromodiphenyl ether	mg/kg	n.d.	5	-	
Octabromodiphenyl ether	mg/kg	n.d.	5	-	
Nonabromodiphenyl ether	mg/kg	n.d.	5	-	
Decabromodiphenyl ether	mg/kg	n.d.	5	-	
<b>Sum of PBDEs (Mono to Deca)</b>	mg/kg	<b>n.d.</b>	-	-	

Test Location: 26 Ayer Rajah Crescent, #07-07, Singapore 139944

This document is issued by the Company under its General Conditions of Service accessible at [http://www.sgs.com/terms\\_and\\_conditions.htm](http://www.sgs.com/terms_and_conditions.htm). Attention is drawn to the limitation of liability, indemnification and jurisdiction issues defined therein. Any holder of this document is advised that information contained hereon reflects the Company's findings at the time of its intervention only and within the limits of Client's instructions, if any. The Company's sole responsibility is to its Client and this document does not exonerate parties to a transaction from exercising all their rights and obligations under the transaction documents. Any unauthorized alteration, forgery or falsification of the content or appearance of this document is unlawful and offenders may be prosecuted to the fullest extent of the law. *Unless otherwise stated the results shown in this test report refer only to the sample(s) tested and such sample(s) are retained for 30 days only. This document cannot be reproduced except in full, without prior approval of the Company.*

## Test Report

No.10111181C/08 (2)

Date: January 22, 2008

Page 3 of 5

- Note:
- (1) mg/kg = ppm
  - (2) n.d.= Not Detected = Denoted less than MDL
  - (3) MDL = Method Detection Limit
  - (4) Boiling-water-extraction:
    - Negative = Absence of Cr(VI) coating / surface layer.
    - Positive = Presence of Cr(VI) coating / surface layer;
    - the detected concentration in boiling-water-extraction solution is equal or greater than 0.02 mg/kg with 50 cm<sup>2</sup> sample surface area.
  - (5) # : Positive means the presence of Cr(VI) on the tested areas and result be regarded as not comply with RoHS requirement.  
Negative means the absence of Cr(VI) on the tested areas and result be regarded as comply with RoHS requirement.
  - (6) Sum of Mono to NonaBDE & according to 2005/717/EC DecaBDE is exempt.
  - (7) “-“ = Not regulated
  - (8) “ --- “ = Not Conducted

Remarks: Sample received was totally dissolved by preconditioning & destroyed after the analysis.  
Lab Analyst: Christine Choy, Irene Li & Jessica Chong.

### Sample photo:

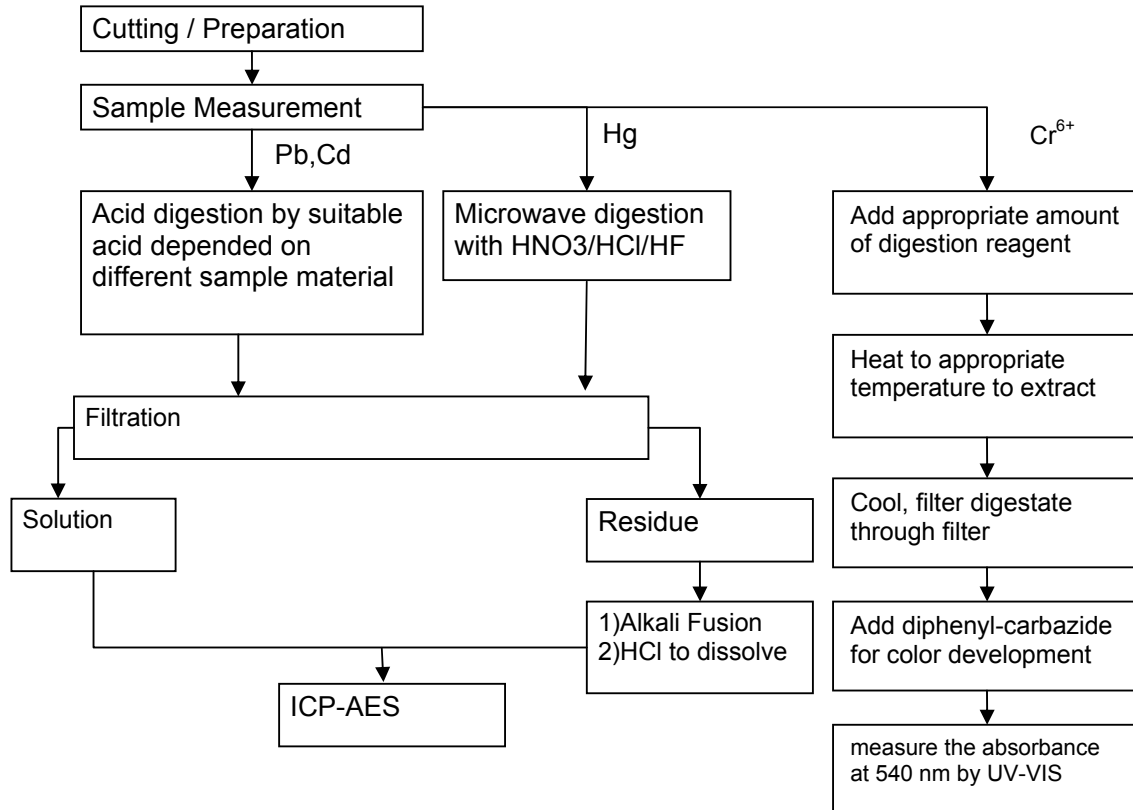


SGS authenticate the photo on original report only

Test Location: 26 Ayer Rajah Crescent, #07-07, Singapore 139944

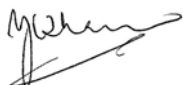
This document is issued by the Company under its General Conditions of Service accessible at [http://www.sgs.com/terms\\_and\\_conditions.htm](http://www.sgs.com/terms_and_conditions.htm). Attention is drawn to the limitation of liability, indemnification and jurisdiction issues defined therein. Any holder of this document is advised that information contained hereon reflects the Company's findings at the time of its intervention only and within the limits of Client's instructions, if any. The Company's sole responsibility is to its Client and this document does not exonerate parties to a transaction from exercising all their rights and obligations under the transaction documents. Any unauthorized alteration, forgery or falsification of the content or appearance of this document is unlawful and offenders may be prosecuted to the fullest extent of the law. *Unless otherwise stated the results shown in this test report refer only to the sample(s) tested and such sample(s) are retained for 30 days only. This document cannot be reproduced except in full, without prior approval of the Company.*

**Process Flow of IEC 62321 (Pb, Cd, Hg & Cr<sup>6+</sup>)**



Lab Analyst : Jessica Chong & Christine Choy.

Signed for and on behalf of  
SGS Testing & Control Services Singapore Pte Ltd

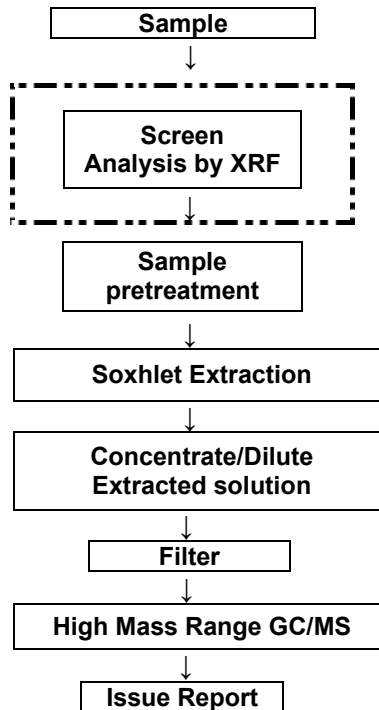


Y.C. Tham  
Laboratory Manager

Test Location: 26 Ayer Rajah Crescent, #07-07, Singapore 139944  
This document is issued by the Company under its General Conditions of Service accessible at [http://www.sgs.com/terms\\_and\\_conditions.htm](http://www.sgs.com/terms_and_conditions.htm). Attention is drawn to the limitation of liability, indemnification and jurisdiction issues defined therein. Any holder of this document is advised that information contained hereon reflects the Company's findings at the time of its intervention only and within the limits of Client's instructions, if any. The Company's sole responsibility is to its Client and this document does not exonerate parties to a transaction from exercising all their rights and obligations under the transaction documents. Any unauthorized alteration, forgery or falsification of the content or appearance of this document is unlawful and offenders may be prosecuted to the fullest extent of the law. *Unless otherwise stated the results shown in this test report refer only to the sample(s) tested and such sample(s) are retained for 30 days only. This document cannot be reproduced except in full, without prior approval of the Company.*

**Process Flow of PBBs and PBDEs by GC/MS (IEC 62321)**

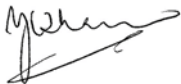
First Testing Process → Optional screen process ..... Confirmation process ...→



Lab Analyst : Irene Li

Sample received has been totally digested and dissolved by preconditioning method.

Signed for and on behalf of  
SGS Testing & Control Services Singapore Pte Ltd



\_\_\_\_\_  
Y.C. Tham  
Laboratory Manager

\*\*\*End of Report\*\*\*

Test Location: 26 Ayer Rajah Crescent, #07-07, Singapore 139944  
This document is issued by the Company under its General Conditions of Service accessible at [http://www.sgs.com/terms\\_and\\_conditions.htm](http://www.sgs.com/terms_and_conditions.htm).  
Attention is drawn to the limitation of liability, indemnification and jurisdiction issues defined therein. Any holder of this document is advised that information contained hereon reflects the Company's findings at the time of its intervention only and within the limits of Client's instructions, if any. The Company's sole responsibility is to its Client and this document does not exonerate parties to a transaction from exercising all their rights and obligations under the transaction documents. Any unauthorized alteration, forgery or falsification of the content or appearance of this document is unlawful and offenders may be prosecuted to the fullest extent of the law. *Unless otherwise stated the results shown in this test report refer only to the sample(s) tested and such sample(s) are retained for 30 days only. This document cannot be reproduced except in full, without prior approval of the Company.*



## Test Report

No. SH8075804/CHEM

Date: May. 31, 2008

Page 1 of 4

SHANGHAI YUANHAO SURFACE FINISHING CO., LTD.  
NO.8, LANE18, SANZHUANG ROAD, SONGJIANG EXPORT PROCESSING ZONE, SHANGHAI

The following sample(s) was/were submitted and identified by/on behalf of the client as:

Sample Name : MATTE TIN  
SGS Ref No. : 11051414  
Main Substance : PURE TIN

Sample Receiving Date : May.28, 2008  
Testing Period : May.28 – 31, 2008

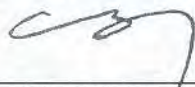
Test Requested : In accordance with the RoHS Directive 2002/95/EC, and its amendment directives.

Test Method : With reference to IEC 62321/2<sup>nd</sup> CDV (111/95/CDV)  
Procedures for the Determination of Levels of Regulated Substances in  
Electrotechnical Products  
(1) Determination of Cadmium by ICP.  
(2) Determination of Lead by ICP and AAS.  
(3) Determination of Mercury by ICP.  
(4) Determination of Hexavalent Chromium by Spot test / Colorimetric Method.

Test Results : Please refer to next pages

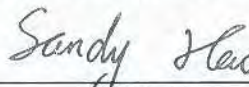
Conclusion : Based on the performed tests on submitted samples, the results comply with the  
RoHS Directive 2002/95/EC and its subsequent amendments.

Signed for and on behalf of  
SGS-CSTC Chemical Laboratory



Ella Zhang  
Section Manager

Signed for and on behalf of  
SGS-CSTC Chemical Laboratory



Sandy Hao  
Lab Manager

This document is issued by the Company under its General Conditions of Service printed overleaf or available on request and accessible at [http://www.sgs.com/terms\\_and\\_conditions.htm](http://www.sgs.com/terms_and_conditions.htm). Attention is drawn to the limitation of liability, indemnification and jurisdiction issues defined therein. Any holder of this document is advised that information contained hereon reflects the Company's findings at the time of its intervention only and within the limits of Client's instructions, if any. The Company's sole responsibility is to its Client and this document does not exonerate parties to a transaction from exercising all their rights and obligations under the transaction documents. Any unauthorized alteration, forgery or falsification of the content or appearance of this document is unlawful and offenders may be prosecuted to the fullest extent of the law.

Unless otherwise stated the results shown in this test report refer only to the sample(s) tested. This document cannot be reproduced except in full, without prior approval of the Company.

## Test Report

No. SH8075804/CHEM

Date: May. 31, 2008

Page 2 of 4

Test results by chemical method (Unit: mg/kg)

Test Item(s):	Method (refer to)	1	MDL	RoHS Limit
Cadmium(Cd)	(1)	ND	2	100
Lead (Pb)	(2)	ND	2	1000
Mercury (Hg)	(3)	ND	2	1000
Hexavalent Chromium (CrVI) by spot test / boiling-water extraction	(4)	Negative	See Note (4)	#

### Test Part Description:

1. Silvery-white metal part

### Note:

- (1) mg/kg = ppm
- (2) ND = Not Detected
- (3) MDL = Method Detection Limit
- (4) Spot-test:  
Negative = Absence of CrVI coating, Positive = Presence of CrVI coating;  
(The tested sample should be further verified by boiling-water-extraction method if the spot test result is Negative or cannot be confirmed.)  
Boiling-water-extraction:  
Negative = Absence of CrVI coating  
Positive = Presence of CrVI coating; the detected concentration in boiling-water-extraction solution is equal or greater than 0.02 mg/kg with 50 cm<sup>2</sup> sample surface area.
- (5) # = Positive indicates the presence of Hexavalent Chromium on the tested areas.  
Negative indicates the absence of CrVI on the tested areas.
- (6) The maximum permissible limit is quoted from the document 2005/618/EC amending RoHS directive 2002/95/EC

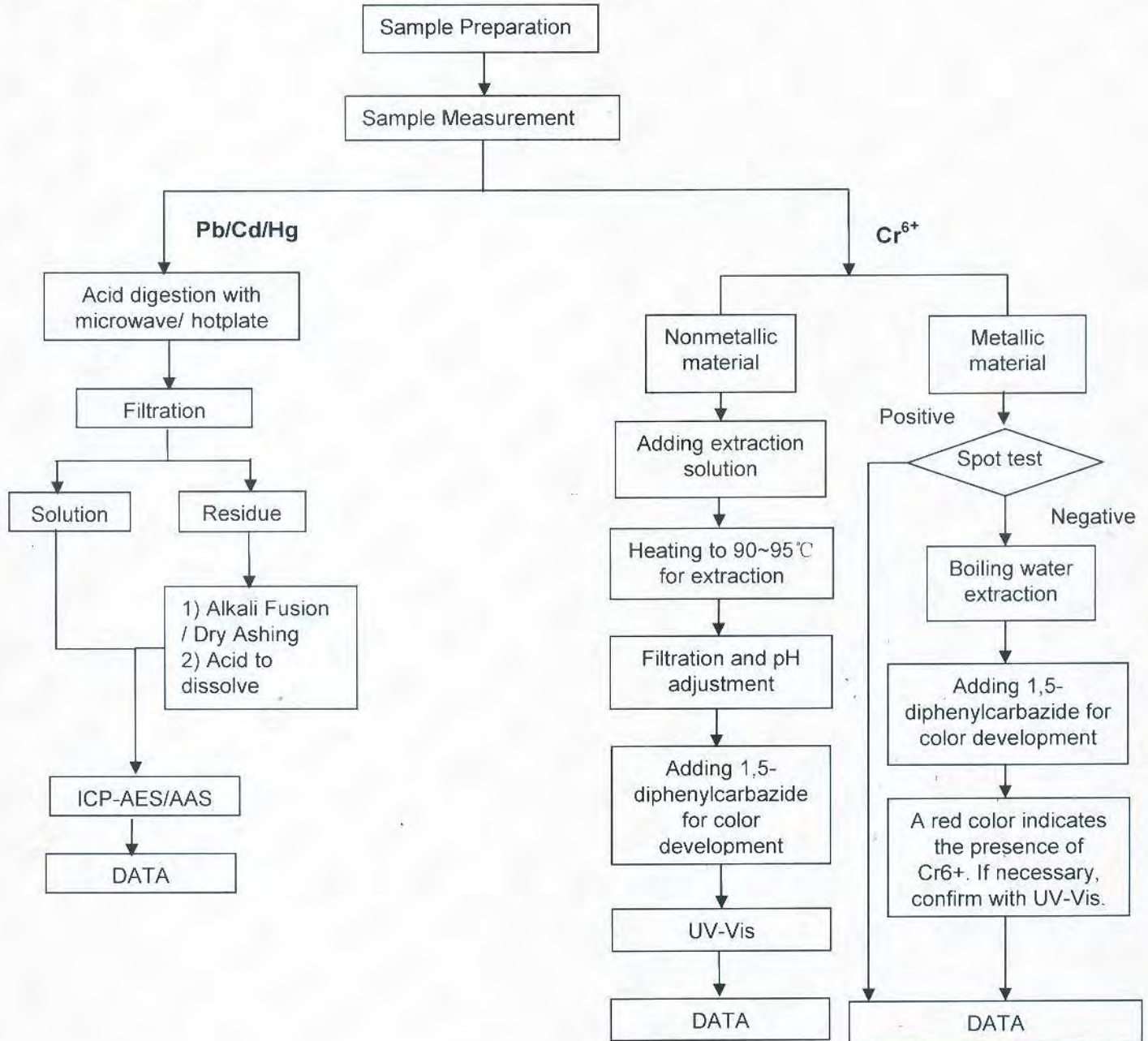
This document is issued by the Company under its General Conditions of Service printed overleaf or available on request and accessible at [http://www.sgs.com/terms\\_and\\_conditions.htm](http://www.sgs.com/terms_and_conditions.htm). Attention is drawn to the limitation of liability, indemnification and jurisdiction issues defined therein. Any holder of this document is advised that information contained hereon reflects the Company's findings at the time of its intervention only and within the limits of Client's instructions, if any. The Company's sole responsibility is to its Client and this document does not exonerate parties to a transaction from exercising all their rights and obligations under the transaction documents. Any unauthorized alteration, forgery or falsification of the content or appearance of this document is unlawful and offenders may be prosecuted to the fullest extent of the law.

Unless otherwise stated the results shown in this test report refer only to the sample(s) tested. This document cannot be reproduced except in full, without prior approval of the Company.



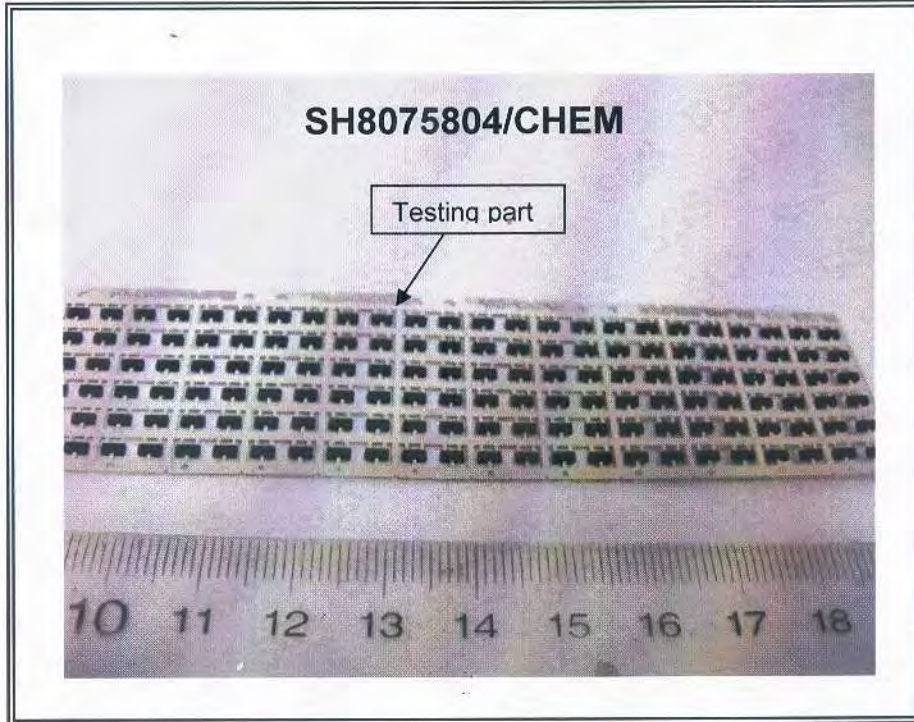
**ATTACHMENTS**

- 1) Name of the person who made measurement: Cathy Cai/George Xu
- 2) Name of the person in charge of measurement: Terry Wang



This document is issued by the Company under its General Conditions of Service printed overleaf or available on request and accessible at [http://www.sgs.com/terms\\_and\\_conditions.htm](http://www.sgs.com/terms_and_conditions.htm). Attention is drawn to the limitation of liability, indemnification and jurisdiction issues defined therein. Any holder of this document is advised that information contained hereon reflects the Company's findings at the time of its intervention only and within the limits of Client's instructions, if any. The Company's sole responsibility is to its Client and this document does not operate parties to a transaction from exercising all their rights and obligations under the transaction documents. Any unauthorized alteration, forgery or falsification of the content or appearance of this document is unlawful and offenders may be prosecuted to the fullest extent of the law. Unless otherwise stated the results shown in this test report refer only to the sample(s) tested. This document cannot be reproduced except in full, without prior approval of the Company.

Sample photo:



SGS authenticate the photo on original report only

\*\*\* End of Report \*\*\*

This document is issued by the Company under its General Conditions of Service printed overleaf or available on request and accessible at [http://www.sgs.com/terms\\_and\\_conditions.htm](http://www.sgs.com/terms_and_conditions.htm). Attention is drawn to the limitation of liability, indemnification and jurisdiction issues defined therein. Any holder of this document is advised that information contained hereon reflects the Company's findings at the time of its intervention only and within the limits of Client's instructions, if any. The Company's sole responsibility is to its Client and this document does not exonerate parties to a transaction from exercising all their rights and obligations under the transaction documents. Any unauthorized alteration, forgery or falsification of the content or appearance of this document is unlawful and offenders may be prosecuted to the fullest extent of the law. Unless otherwise stated the results shown in this test report refer only to the sample(s) tested. This document cannot be reproduced except in full, without prior approval of the Company.