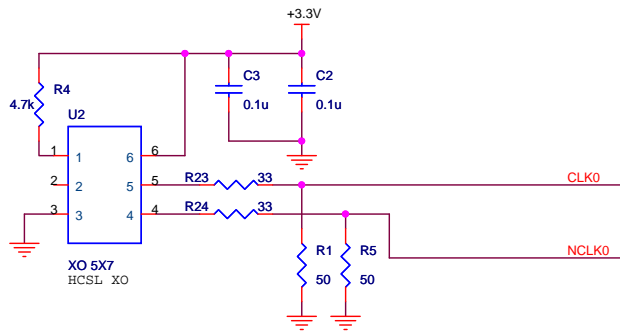
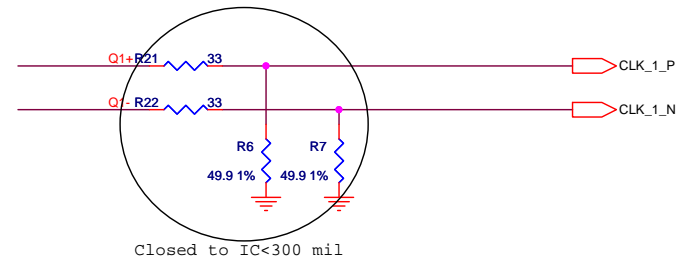
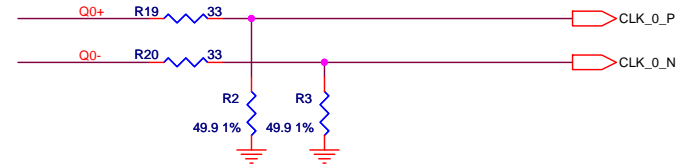
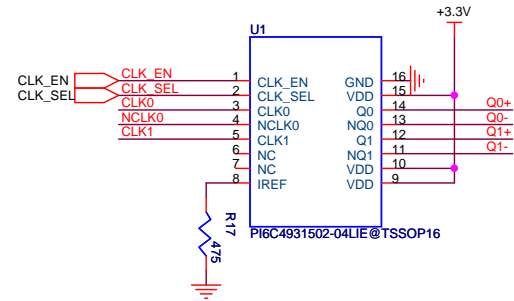


CLK_EN	Function
0	All output Disable
1	All output Enable

CLK_SEL	Function
0	CLK0 nCLK0
1	CLK1



**App Note:**

1. Select CLK0 or CLK1 as input ;
2. Each VCC pin must have 0.1uF decoupling cap.; better has 1u more;
3. Place serial 33 ohm and 49.9 ohm pull-down in comp. side close to pin <=300mil.
4. Put 475 ohm resistor closed to IREF Pin

Title		
PI6C4931502-04LIE_App schematic		
Size	Document Number	Rev
B	<Doc>	A
Date:	January 29, 2015	Sheet 1 of 7