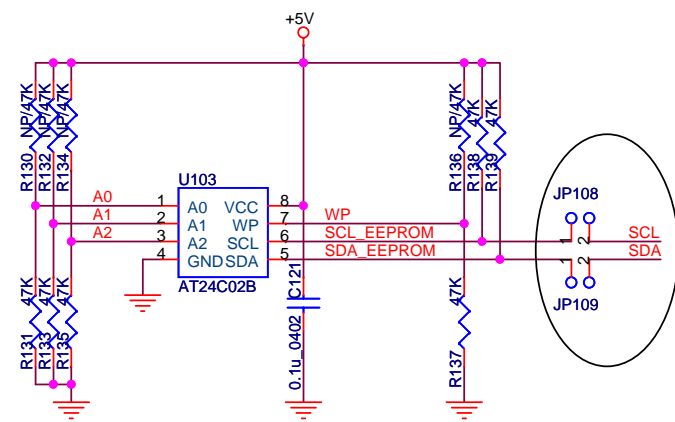
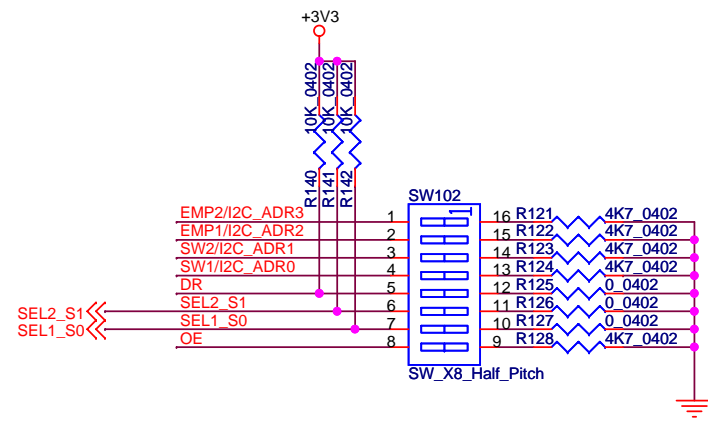
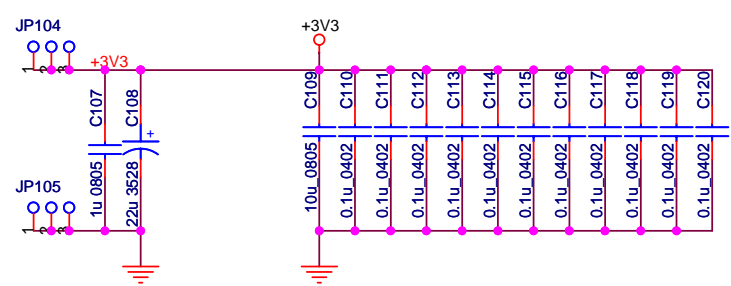
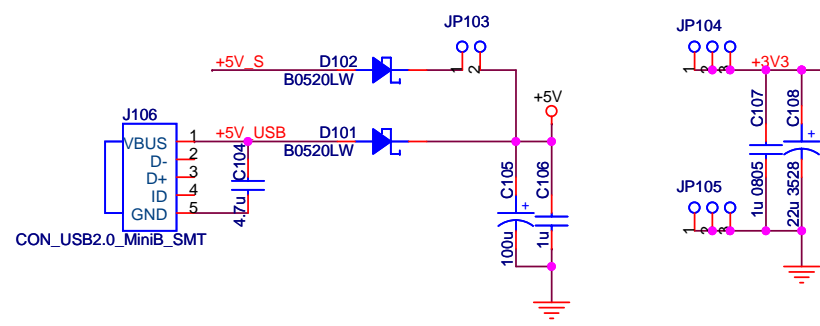


Short JP106-7 when reading an EEPROM in a sink device.



Short JP108-9 when reading on-board EEPROM.



At least 1pc 4.7uF and 6pc 0.1uF decoupling capacitors are recommended for VDD of PI3HDX414. Each decoupling capacitor should be connected to PCB power plane via shortest path.

Title		
PI3HDX414 DEMO BOARD SCHEMATIC - SIDEBAND CHANNELS & POWER		
Size	Document Number	Rev A
Date:	Monday, January 27, 2014	Sheet 2 of 2