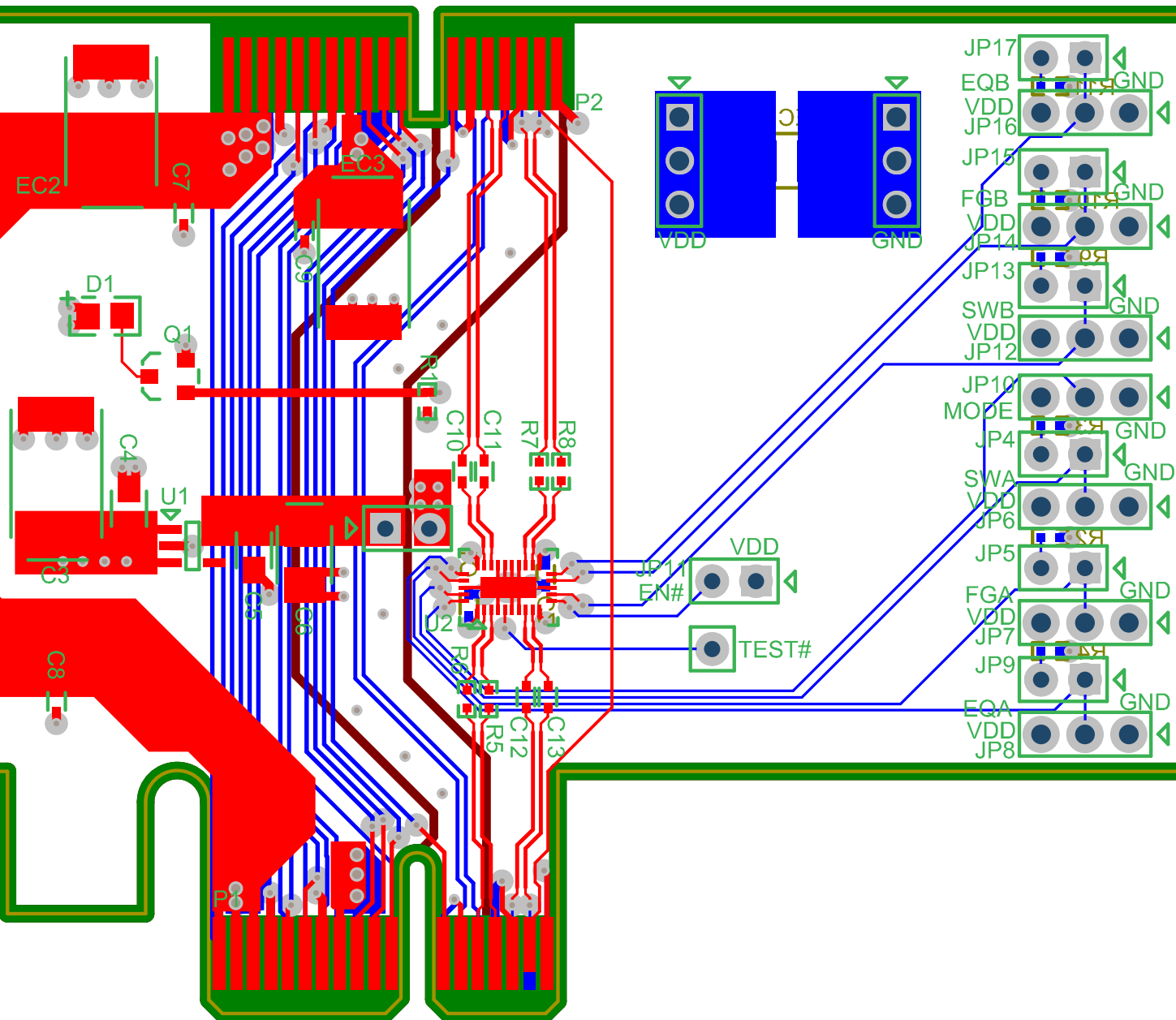


S/N:



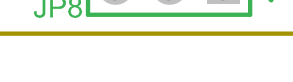
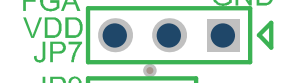
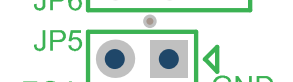
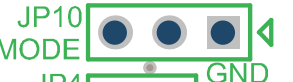
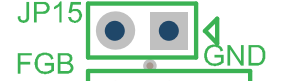
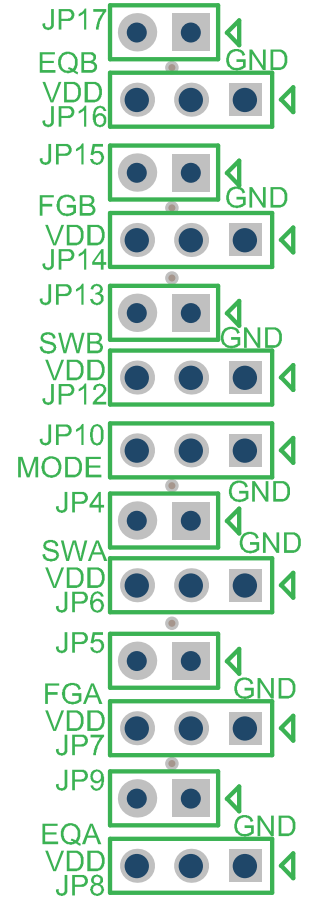
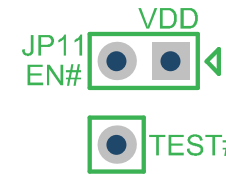
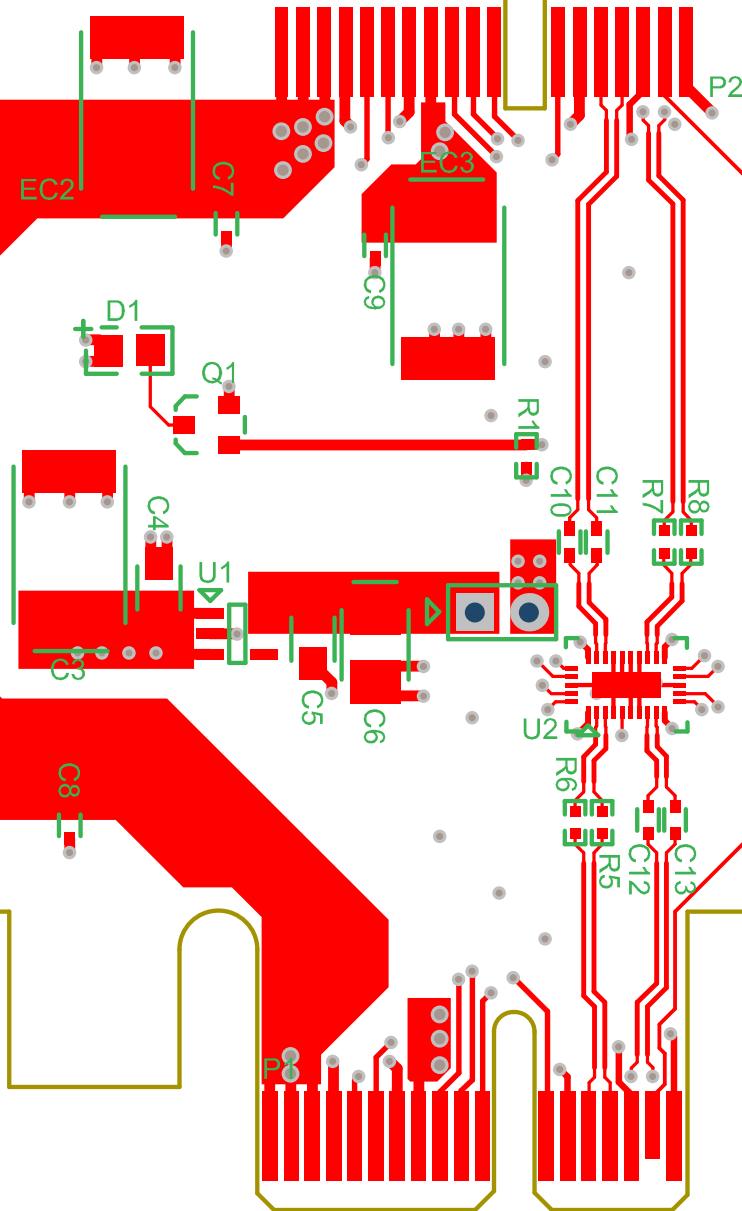


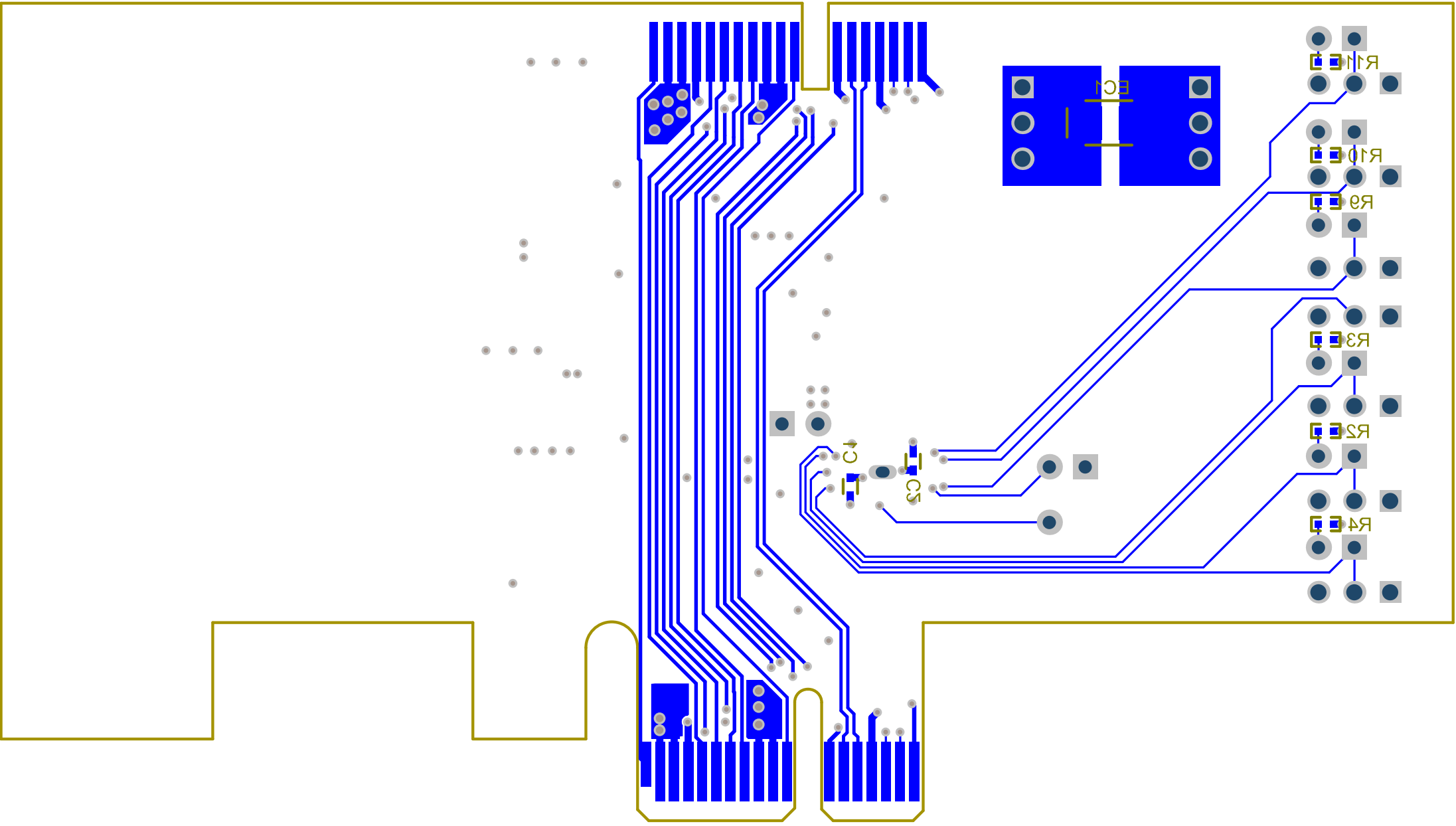
PI3EQX12902B_PCIE CONN_EVB

PI3EQX12902A_PCIE CONN_EVB

REV.A Date:2016.3.1

S/N:





Comment	Description	Designator	Footprint	LibRef	Quantity
0.1uF		C1, C2	CC_0402	C_0.1u_0402	2
100u		C3	CAP@CT_7343	100UF 7343_1	1
1u		C4, C5	CAP@CC_0805	CHIP CAP0805	2
22u		C6	CAP@CT_3528	22UF 3528	1
0.1u_0402		C7, C8, C9	CC_0402	C_0.1u_0402	3
0.22u_0402		C10, C11, C12, C13	CC_0402	C_0.1u_0402	4
LED_G		D1	LED_0805	LED_0805_G_Dup1	1
22uF		EC1	CT_3528	C_tan_22u_3528	1
100u_7343		EC2, EC3	CT_7343	C_tan_100u_7343	2
3PIN HEADER		JP1, JP3, JP6, JP7, JP8, JP10, JP12, JP14, JP16	PLUG-3PIN@3PIN-100	3PIN HEADER	9
2x1 Pin Header		JP2, JP4, JP5, JP9, JP11, JP13, JP15, JP17	2x1 Pin Header	2x1 Pin Header	8
CON_PCIex1_Finger		P1	CON_PCIex1_Finger	CON_PCIex1_Finger	1
CON_PCIex1_Edge_Rec ept		P2	CON_PCIex1_Edge_Rec ept	CON_PCIex1_Edge_Rec ept	1
2N7002		Q1	SOT-23	TR_NMOS_0.1A_SOT-23	1
1K		R1	R_0402	R_0402	1
68K		R2, R3, R4, R9, R10, R11	R_0402	R_0402	6
0 ohm		R5, R6, R7, R8	R_0402	R_0402	4
1 Pin Header		TEST#1	1 Pin Header	1 Pin Header	1
PT7M8206B12TAE		U1	Pow_SOT-23-5	Pow_PT7M8206	1
PI3EQX12902BZLE@TQF		U2	TQFN30_4.5X2.5	PI3EQX12902BZLE@TQF	1