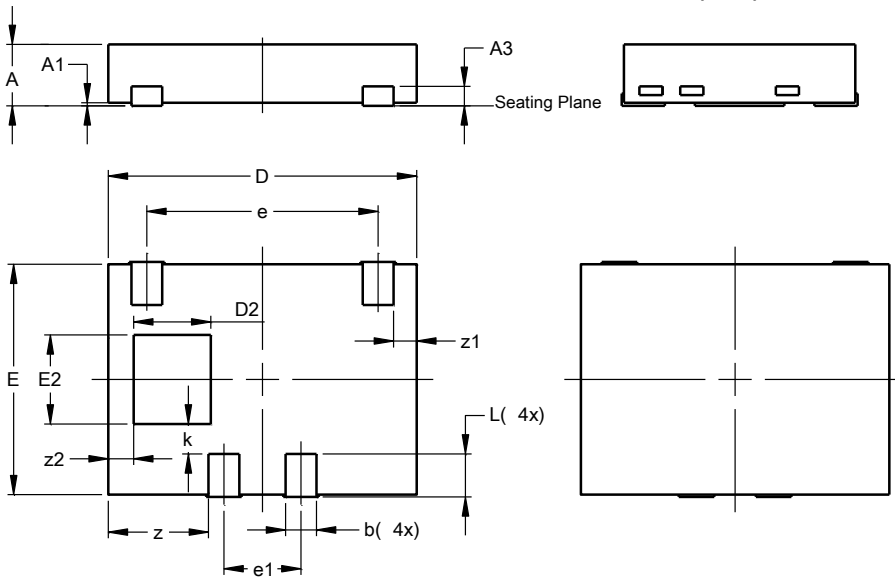


Package Outline Dimensions

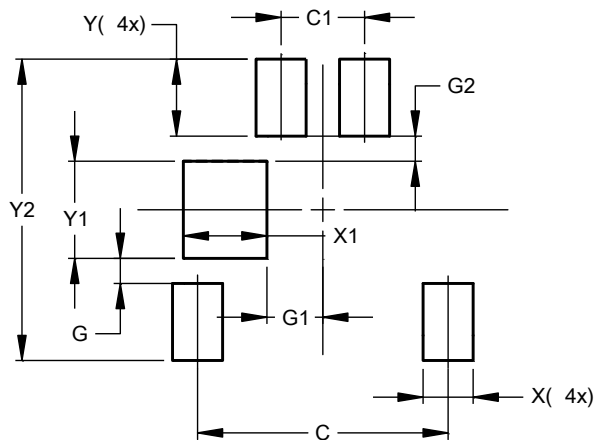
X1-DFN2015-4 (SWP)



X1-DFN2015-4 (SWP)			
Dim	Min	Max	Typ
A	0.39	0.45	0.42
A1	0.00	0.05	0.03
A3	--	--	0.13
b	0.15	0.25	0.20
D	1.95	2.05	2.00
D2	0.40	0.60	0.50
E	1.45	1.55	1.50
E2	0.48	0.68	0.58
e	1.50 BSC		
e1	0.50 BSC		
L	0.23	0.33	0.28
k	--	--	0.195
z	--	--	0.650
z1	--	--	0.150
z2	--	--	0.165
All Dimensions in mm			

Suggested Pad Layout

X1-DFN2015-4 (SWP)



Dimensions	Value (in mm)
C	1.500
C1	0.500
G	0.150
G1	0.335
G2	0.150
X	0.300
X1	0.500
Y	0.460
Y1	0.580
Y2	1.800

ALL DIMENSIONS ARE NOMINAL VALUES SHOWN IN MILLIMETERS

Note: The suggested land pattern dimensions have been provided for reference only, as actual pad layouts may vary depending on application. These numbers may be modified based on user equipment capability or fabrication criteria. A more robust pattern may be desired for wave soldering and is calculated by adding 0.2 mm to the 'Z' dimension. For further information, please reference document IPC-7351A, Naming Convention for Standard SMT Land Patterns, and for International grid details, please see document IEC, Publication 97.