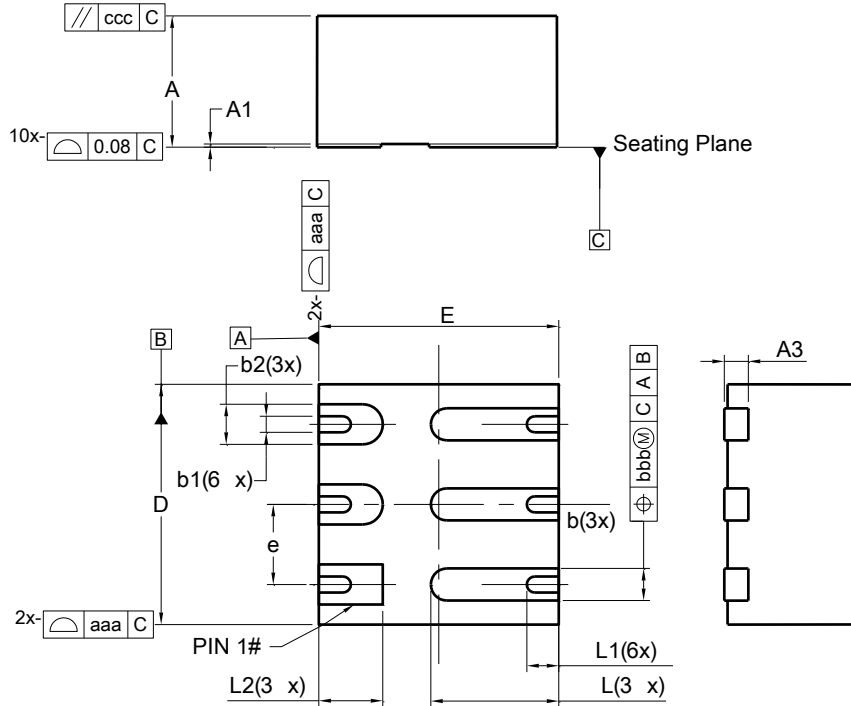


Package Outline Dimensions

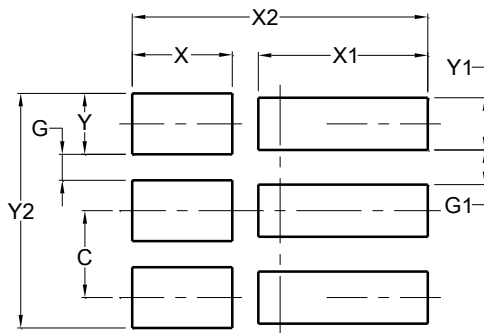
V-DFN1515-6/SWP (Type UX)



V-DFN1515-6/SWP (Type UX)			
Dim	Min	Max	Typ
A	0.75	0.85	0.80
A1	0.00	0.05	0.03
A3	--	--	0.127
b	0.150	0.250	0.200
b1	0.070	0.130	0.100
b2	0.200	0.300	0.250
D	1.45	1.55	1.50
E	1.45	1.55	1.50
e	--	--	0.500
L	0.700	0.900	0.800
L1	0.150	0.250	0.200
L2	0.300	0.500	0.400
aaa	0.15		
bbb	0.05		
ccc	0.05		
All Dimensions in mm			

Suggested Pad Layout

V-DFN1515-6/SWP (Type UX)



Dimensions	Value (in mm)
C	0.500
G	0.150
G1	0.200
X	0.575
X1	0.975
X2	1.700
Y	0.350
Y1	0.300
Y2	1.350

ALL DIMENSIONS ARE NOMINAL VALUES SHOWN IN MILLIMETERS

Note: The suggested land pattern dimensions have been provided for reference only, as actual pad layouts may vary depending on application. These numbers may be modified based on user equipment capability or fabrication criteria. A more robust pattern may be desired for wave soldering and is calculated by adding 0.2 mm to the 'Z' dimension. For further information, please reference document IPC-7351A, Naming Convention for Standard SMT Land Patterns, and for International grid details, please see document IEC, Publication 97.