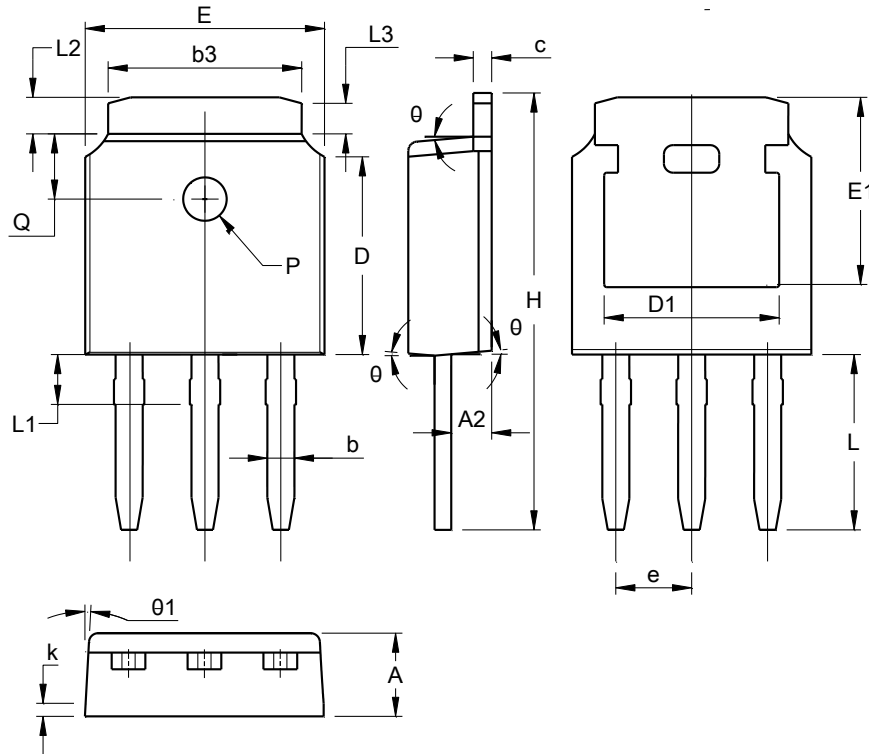


Package Outline Dimensions

TO251 (Type HE1)



TO251 (Type HE1)			
Dim	Min	Max	Typ
A	2.20	2.40	2.30
A2	0.97	1.17	1.07
b	0.68	0.90	0.78
b3	5.20	5.50	5.33
c	0.43	0.63	0.53
D	5.98	6.22	6.10
D1	5.30 REF		
e	2.286 BSC		
E	6.40	6.80	6.60
E1	4.63	5.03	4.83
H	10.00	11.44	11.22
k	0.40REF		
L	3.90	4.30	4.10
L1	0.85	1.25	1.05
L2	0.88	1.28	1.02
L3	0.75 REF		
Q	1.65	1.95	1.80
PØ	1.20		
θ	5°	9°	7°
θ1	5°	9°	7°
All Dimensions in mm			