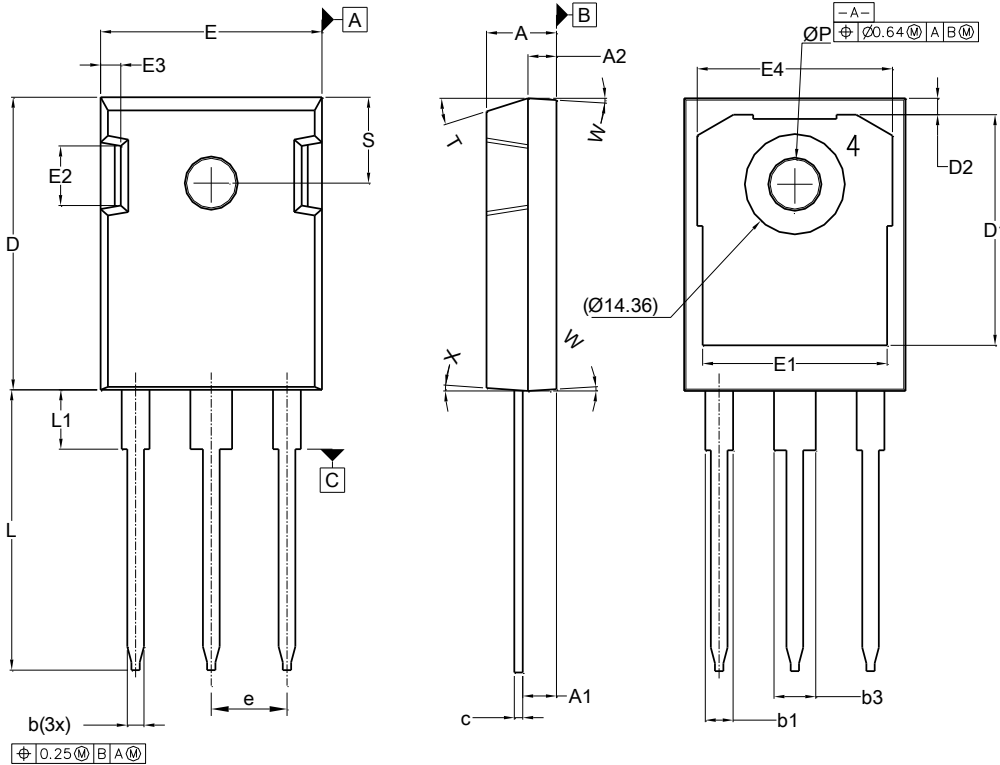
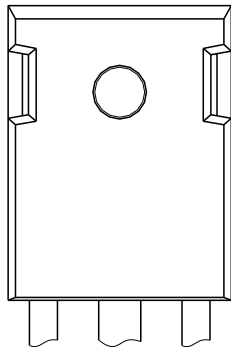


Package Outline Dimensions

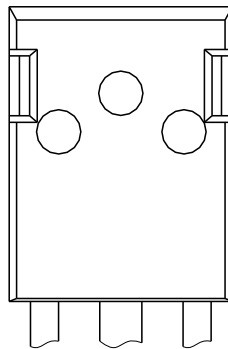
TO247 Standard



TO247 Standard			
Dim	Min	Max	Typ
A	4.83	5.21	--
A1	2.10	2.54	--
A2	1.88	2.16	--
b	1.07	1.33	--
b1	1.90	2.41	--
b3	2.87	3.38	--
c	0.51	0.76	0.60
D	20.80	21.75	--
D1	15.88	17.65	--
D2	0.95	1.77	--
E	15.75	16.25	--
E1	12.38	14.52	--
E2	3.68	5.10	--
E3	1.00	2.18	--
E4	13.10	14.52	--
e	5.44 BSC		
L	19.60	20.32	--
L1	3.78	4.40	--
PØ	2.90	3.65	--
S	6.04	6.80	--
T	17.5-20° REF		
W	3.5-4.5° REF		
X	4-5° REF		
All Dimensions in mm			



OPTION A
(TOP VIEW)



OPTION B
(TOP VIEW)