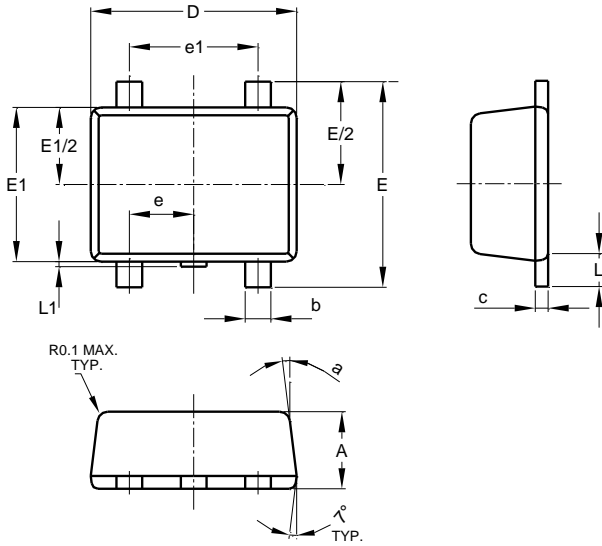


**Package Outline Dimensions**

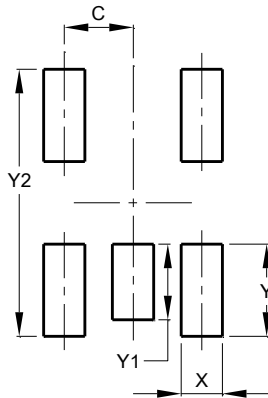
SOT543



SOT543			
Dim	Min	Max	Typ
A	0.55	0.60	0.60
b	0.15	0.30	0.20
c	0.10	0.18	0.15
D	1.50	1.70	1.60
E	1.55	1.70	1.60
E1	1.10	1.25	1.20
e	0.50 BSC		
e1	1.00 BSC		
L	0.10	0.30	0.20
L1	0.06	0.10	0.08
a	6°	8°	7°
<b>All Dimensions in mm</b>			

**Suggested Pad Layout**

SOT543



Dimensions	Value (in mm)
C	0.500
X	0.300
Y	0.670
Y1	0.550
Y2	1.940

**ALL DIMENSIONS ARE NOMINAL VALUES SHOWN IN MILLIMETERS**

Note: The suggested land pattern dimensions have been provided for reference only, as actual pad layouts may vary depending on application. These numbers may be modified based on user equipment capability or fabrication criteria. A more robust pattern may be desired for wave soldering and is calculated by adding 0.2 mm to the 'Z' dimension. For further information, please reference document IPC-7351A, Naming Convention for Standard SMT Land Patterns, and for International grid details, please see document IEC, Publication 97.