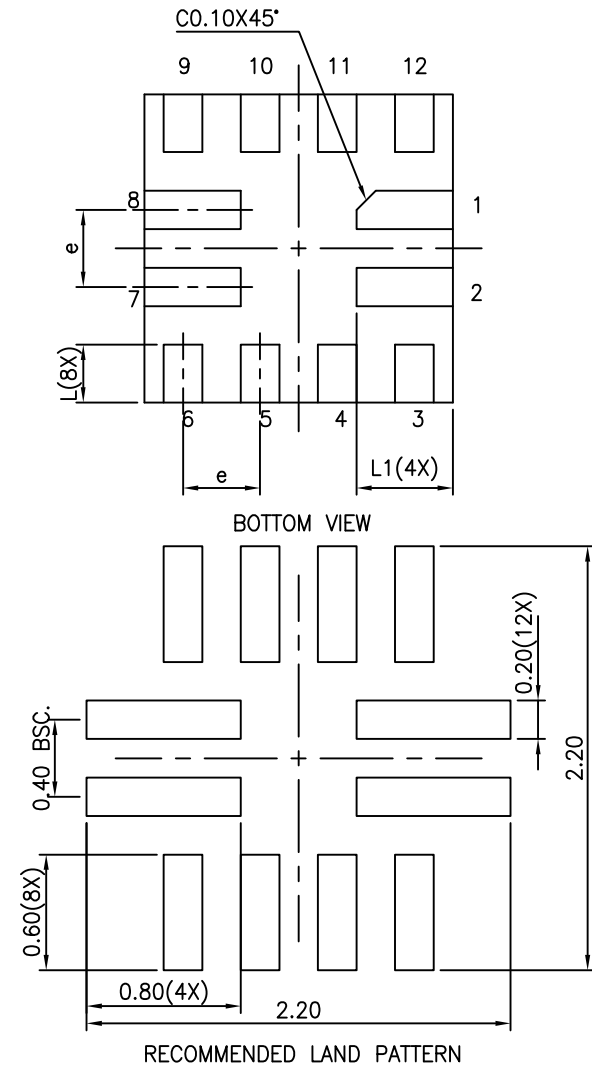
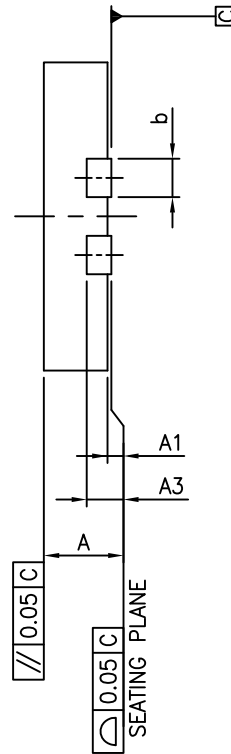


TOP VIEW

SYMBOLS	MIN.	NOM.	MAX.
A	0.30	0.35	0.40
A1	0.00	0.02	0.05
A3	0.127 REF.		
b	0.15	0.20	0.25
D	1.55	1.60	1.65
E	1.55	1.60	1.65
e	0.40 BSC		
L	0.25	0.30	0.35
L1	0.45	0.50	0.55



Note

1. Controlling dimensions in millimeters. Angles in degrees.
2. Ref: JEDEC MO-288
3. Recommended land pattern is for reference only.



DATE: 11/06/13

DESCRIPTION: 12-contact, Super Thin QFN, X2QFN

PACKAGE CODE: XUA

DOCUMENT CONTROL #: PD-2167

REVISION: A