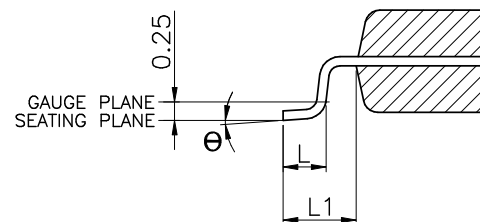
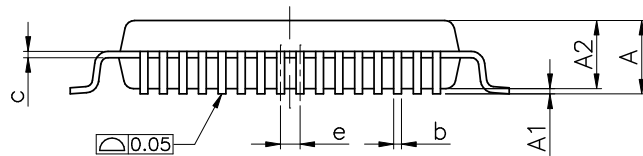


VARIATIONS (ALL DIMENSIONS SHOWN IN MM)

SYMBOLS	MIN.	NOM.	MAX.
A	—	—	1.60
A1	0.05	—	0.15
A2	1.35	1.40	1.45
b	0.13	0.18	0.23
c	0.09	—	0.20
D	9.00 BSC		
D1	7.00 BSC		
e	0.40 BSC		
E	9.00 BSC		
E1	7.00 BSC		
L	0.45	0.60	0.75
L1	1.00 REF		
θ	0°	3.5°	7°



DETAIL "A"

Notes:

- JEDEC OUTLINE: MS-026 BBD
- Dimensions D1 and E1 Do not include mold protrusion. Allowable protrusion is 0.25mm per side. D1 and E1 are maximum plastic body size dimensions including mold mismatch.
- Dimension b does not include Dambar protrusion. Allowable Dambar protrusion shall not cause the lead width to exceed the maximum b dimension by more than 0.08mm.

		DATE: 05/18/11
DESCRIPTION: 64-contact, Low Profile Quad Flat Package (LQFP)		
PACKAGE CODE: FB (FB64)		
DOCUMENT CONTROL #: PD-2099		REVISION: --