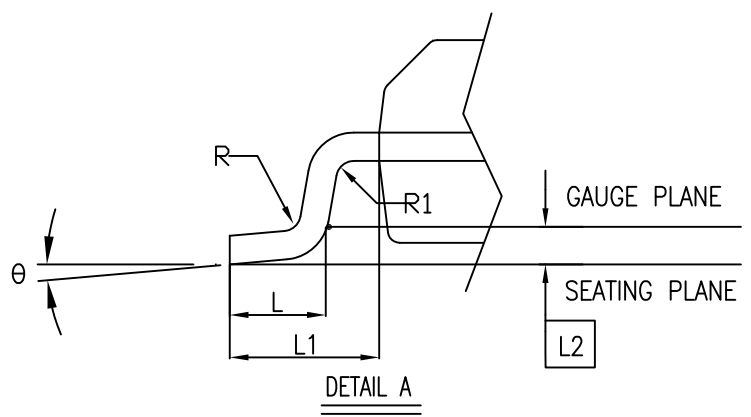


| SYMBOL | DIMENSION IN INCH | | |
|--------|-------------------|-------|--------|
| | MIN. | NOM | MAX. |
| A | - | - | 0.069 |
| A1 | 0.004 | - | 0.0098 |
| A2 | 0.049 | - | - |
| b | 0.008 | - | 0.012 |
| c | 0.004 | - | 0.010 |
| D | 0.337 | 0.341 | 0.345 |
| E | 0.228 | 0.236 | 0.244 |
| E1 | 0.150 | 0.154 | 0.158 |
| L | 0.016 | - | 0.050 |
| L1 | 0.041 REF | | |
| L2 | 0.010 BSC | | |
| e | 0.025 BSC | | |
| R | 0.003 | - | - |
| R1 | 0.003 | - | - |
| θ | 0° | - | 8° |



NOTES:
 1. ALL DIMENSIONS IN INCH. ANGLES IN DEGREES.
 2. JEDEC MO-137E
 3. DIMENSIONS DOES NOT INCLUDE MOLD FLASH, PROTRUSIONS OR GATE BURRS.

| | |
|-----------------------------|---------------------------------------|
| | DATE: 03/24/16 |
| | DESCRIPTION: 24-Pin, 150mil Wide QSOP |
| PACKAGE CODE: Q (Q24) | |
| DOCUMENT CONTROL #: PD-1203 | REVISION: J |