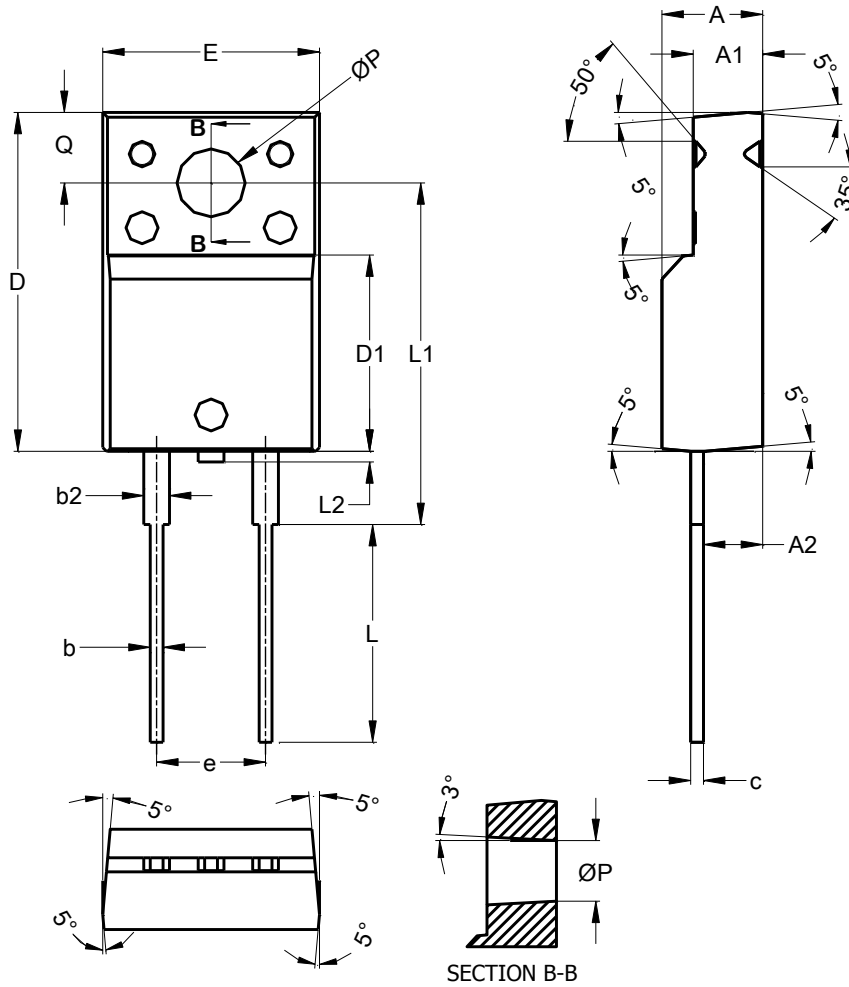


Package Outline Dimensions

ITO220AC



ITO220AC			
Dim	Min	Max	Typ
A	4.50	4.90	4.70
A1	3.04	3.44	3.24
A2	2.56	2.96	2.76
b	0.50	0.75	0.60
b2	1.10	1.35	1.20
c	0.50	0.70	0.60
D	15.67	16.07	15.87
D1	8.99	9.39	9.19
e	5.08 BSC		
E	9.91	10.31	10.11
L	9.45	10.05	9.75
L1	15.80	16.20	16.00
L2	--	--	0.50
ØP	2.98	3.38	3.18
Q	3.10	3.50	3.30
All Dimensions in mm			