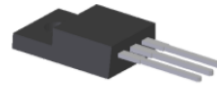


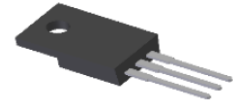
Mechanical Data

- Through - Hole Package
- Weight: 1.90 grams (approximately)
- Max Soldering Temperature 260°C for 30secs as per JEDEC J-STD-020
- Case Material – Molded Plastic, UL Flammability Rating 94V-0
- Terminals: Finish – Matte Tin Plated Leads, Solderable per MIL-STD-202, Method 208 (e3)

Package View

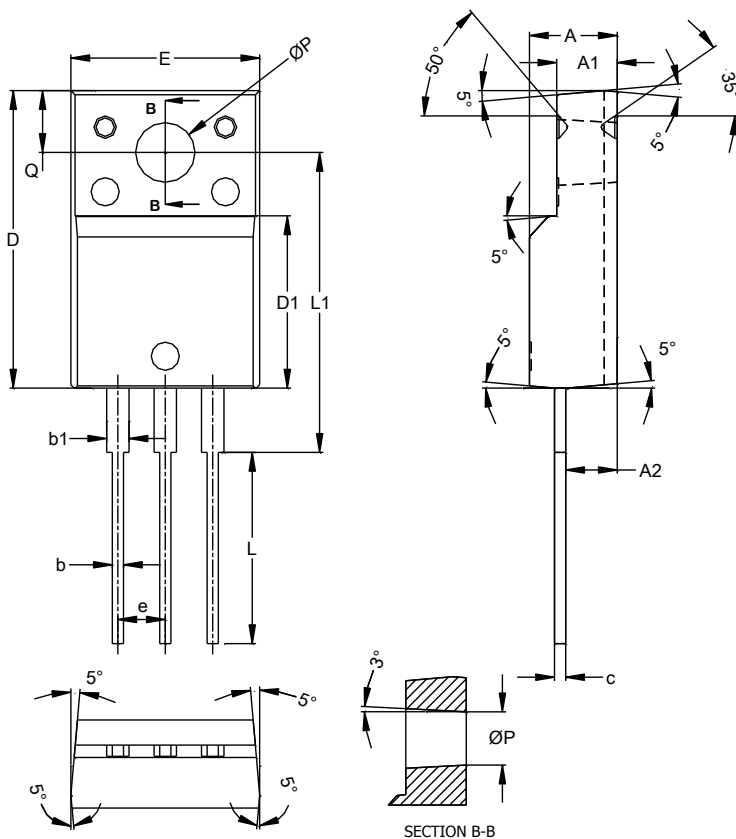


Top View



Bottom View

Package Outline Dimensions



ITO220AB			
Dim	Min	Max	Typ
A	4.50	4.90	4.70
A1	3.04	3.44	3.24
A2	2.56	2.96	2.76
b	0.50	0.75	0.60
b1	1.10	1.35	1.20
c	0.50	0.70	0.60
D	15.67	16.07	15.87
D1	8.99	9.39	9.19
E	9.91	10.31	10.11
e	--	--	2.54
L	9.45	10.05	9.75
L1	15.80	16.20	16.00
P	2.98	3.38	3.18
Q	3.10	3.50	3.30
All Dimensions in mm			

Note: For high voltage applications, the appropriate industry sector guidelines should be considered with regards to creepage and clearance .

Minimum Packing Quantity

	Quantity
Bulk - Loose	1,000/ 2,000*
Bulk - Tube	50

*Quantity Varies by Part Number

Note: Package quantities given are for minimum packaging quantity only, not minimum order quantity. For minimum order quantity, please contact Sales Department.

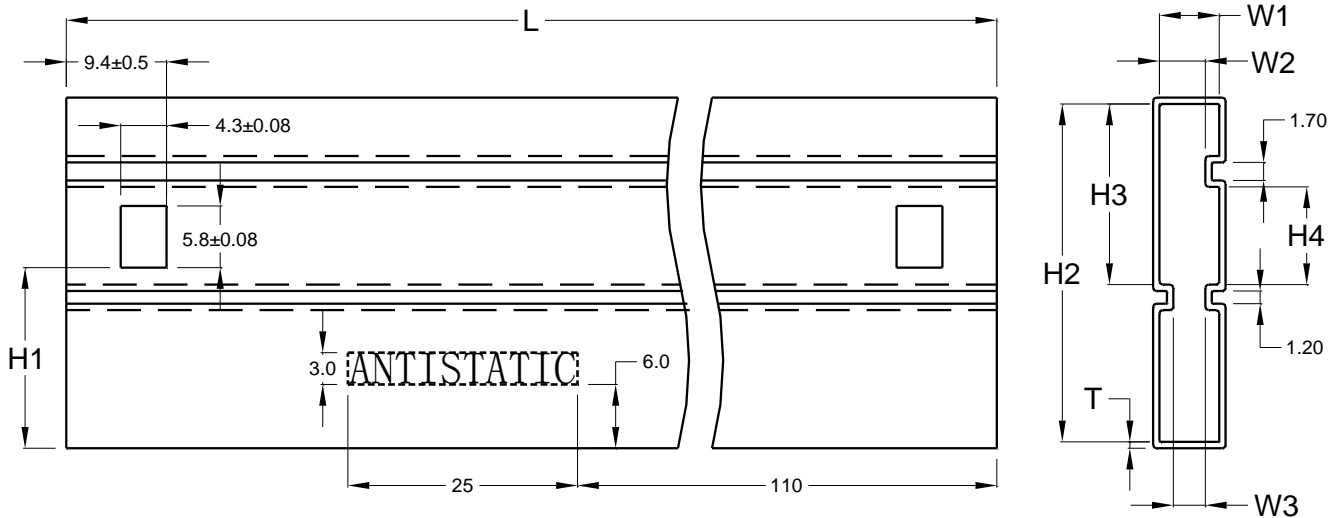
Note: No mixed date codes or partial quantity (less than minimum packaging quantity) per packaging is allowed.

Note: In no case shall there be two or more consecutive components missing from any reel for any reason.

Tube Pack Dimensions/ Specifications

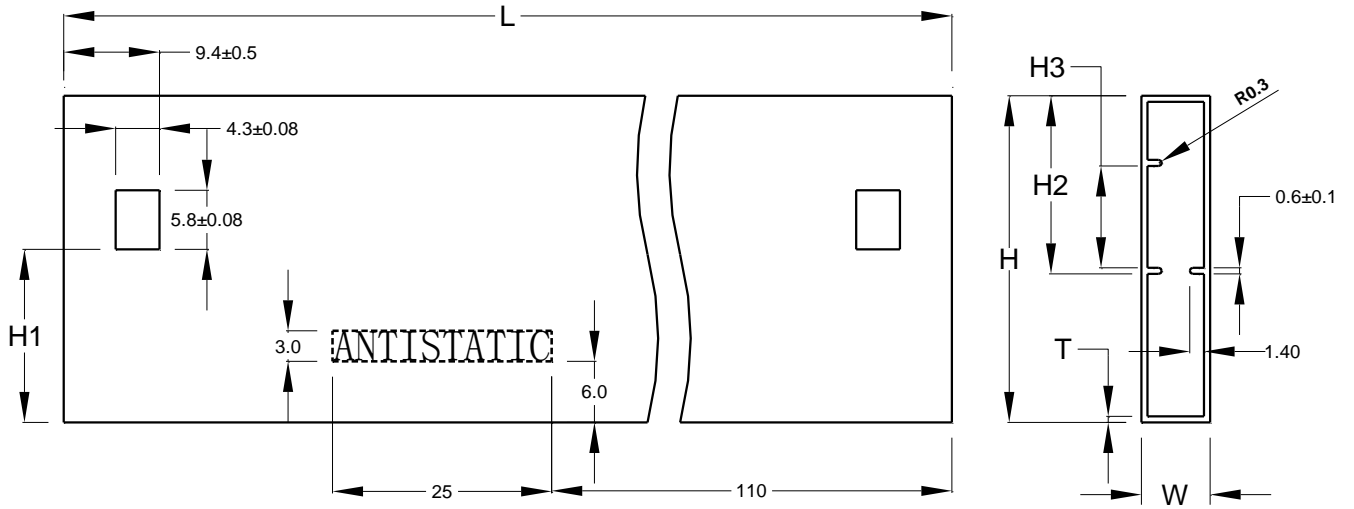
Tube Pack			
H - Height (mm)	W - Width (mm)	L - Length (mm)	Drawing reference
33	6.8	529	Fig.2
32.09	6.75	534	Fig.3

Fig. 2



Dimension	Specification (mm)	Dimension	Specification (mm)
H1	17.00±0.3	W1	5.60±0.3
H2	31.80±0.5	W2	4.60±0.3
H3	17.00±0.3	W3	3.00±0.3
H4	9.20±0.3	T	0.60+0.2/-0.05
L	529.0±1.0		

Fig.3



Dimension	Specification (mm)	Dimension	Specification (mm)
H	32.09 ± 0.10	L	534.0 ± 1.0
H1	17.00 ± 0.3	W	6.75 ± 0.25
H2	17.50 ± 0.5	T	0.60 ± 0.1
H3	10.00 ± 0.5		