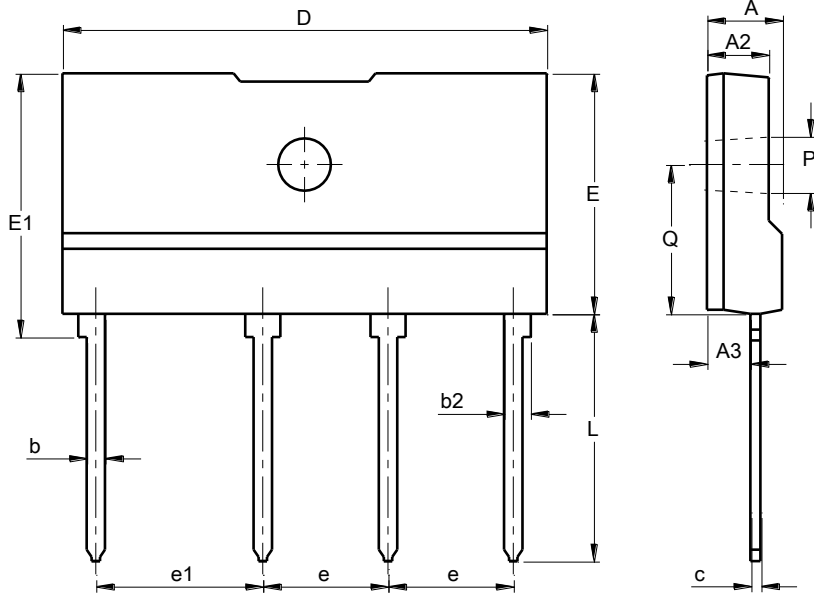


**Package Outline Dimensions**

**GBJL**



GBJL			
Dim	Min	Max	Typ
A	4.30	4.90	--
A2	3.30	3.90	--
A3	2.50	2.90	--
b	0.90	1.10	--
b2	1.50	1.70	--
c	0.40	0.60	--
D	28.70	29.30	--
E	14.20	14.80	--
E1	15.60	16.20	--
e	7.30	7.70	--
e1	9.80	10.20	--
L	14.60	15.20	--
P	3.10	3.40	--
Q	8.70	9.30	--
<b>All Dimensions in mm</b>			