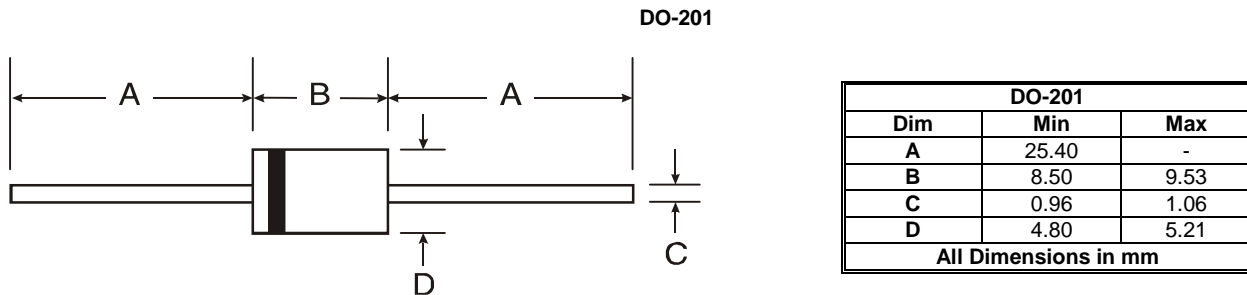


**Mechanical Data**

- Axial, Through-Hole Package
- Weight: 1.12 grams (Approximate)
- Max Soldering Temperature +260°C for 30 secs as per JEDEC J-STD-020
- Case Material – Molded Plastic, UL Flammability Rating 94V-0
- Terminals: Finish – Matte Tin Plated Leads, Solderable per MIL-STD-202, Method 208 (e3)

**Package Outline Dimensions**



**Note:** For high voltage applications, the appropriate industry sector guidelines should be considered with regards to creepage and clearance.

**Minimum Packing Quantity**

	Quantity per Box
<b>Bulk - Loose</b>	1,000
<b>13" Tape and Reel</b>	1,000/1,200*
<b>Ammo Pack</b>	1,000

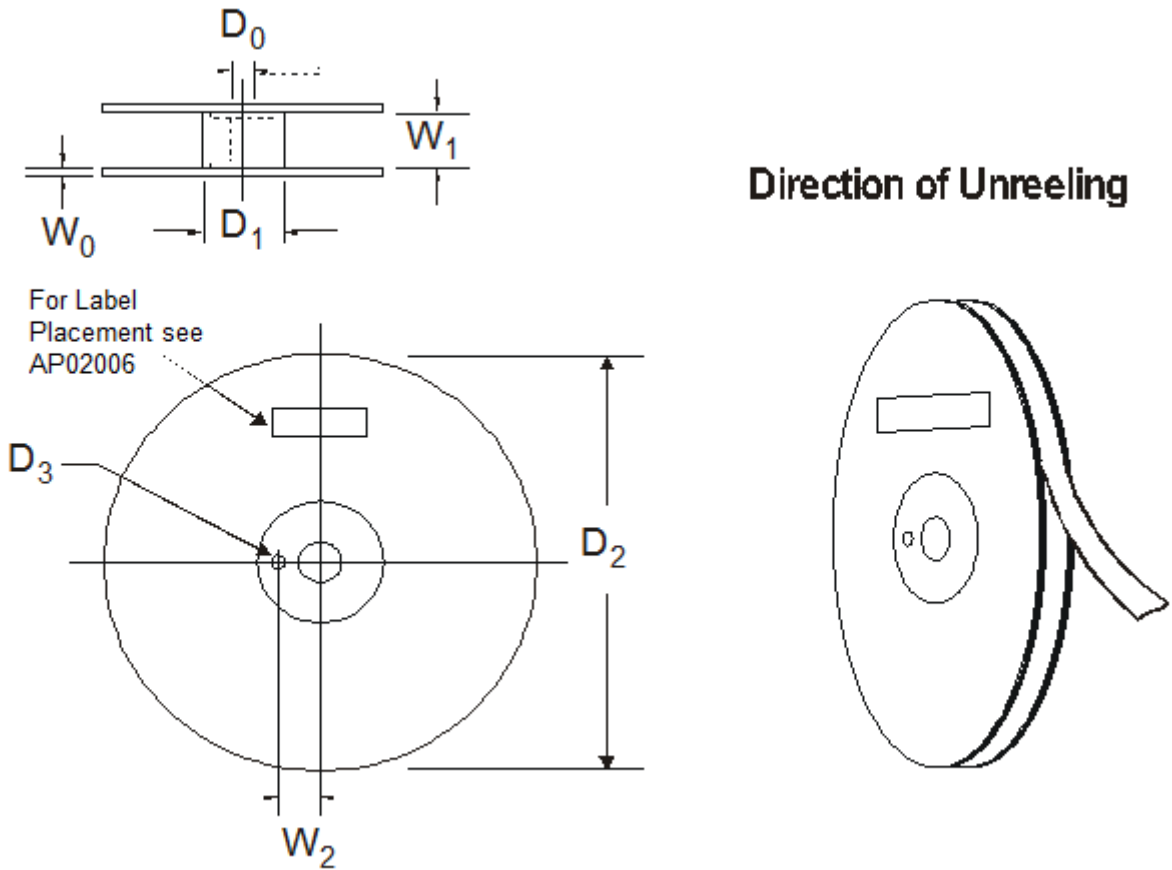
\*Quantity Varies by Part Number

**Note:** Package quantities given are for minimum packaging quantity only, not minimum order quantity. For minimum order quantity, please contact Sales Department.

**Note:** No mixed date codes or partial quantity (less than minimum packaging quantity) per packaging is allowed.

**Note:** In no case shall there be two or more consecutive components missing from any reel for any reason.

**Product Reel Dimension**

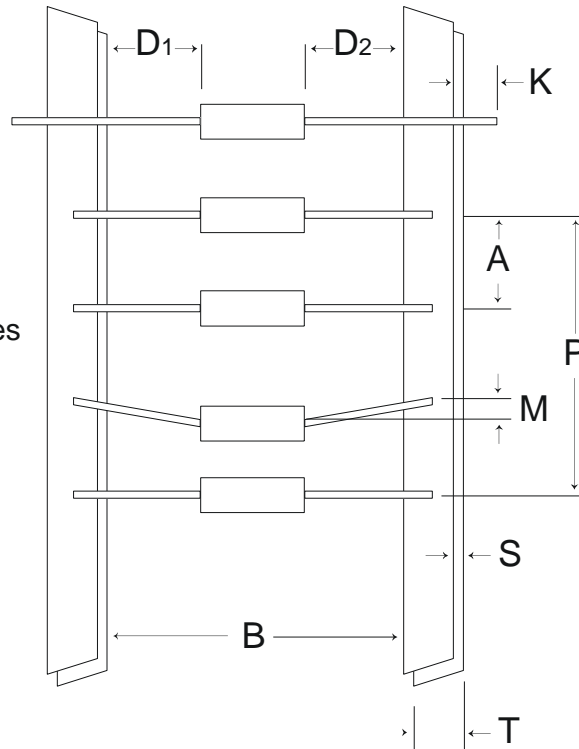


PRODUCT REEL			
Description	Symbol	Specification(mm)	Alternate(mm)
Arbor Hole Diameter	$D_0$	$16.6 \pm 0.50$	$30.0 \pm 0.50$
Core Diameter (O.D)	$D_1$	81.0 Typical	81.0 Typical
Reel Diameter	$D_2$	$345.0 \pm 15.0$	$260.0 \pm 15.0$
Drive Hole Diameter	$D_3$	$9.5 \pm 0.5$	$9.5 \pm 0.5$
Material Thickness	$W_0$	2.0 – 4.0	2.0 – 4.0
Reel Width	$W_1$	$80.0 \pm 5.0$	$65.0 \pm 5.0$
Drive/ Arbor Hole Spacing	$W_2$	$27.5 \pm 0.5$	$27.5 \pm 0.5$

Core material: plastic (blue/black) or metal (neutral)  
Reel material: corrugated board or plastic (blue or black)

## Reel/ Ammo Pack Taping Specifications

Dimensions A, M, K, P, S, & T apply to both sides



REEL AND AMMO PACK TAPING SPECIFICATIONS		
Description	Symbol	Specification (mm)
Component Pitch	A	10.0 ± 0.5
Inside Tape Spacing	B	52.4 ± 1.5
Lead to Lead Eccentricity	$ D_1 - D_2 $	1.4 max
Lead Extension	K	0.8 max
Lead Bending	M	1.2 max
Cumulative Pitch	P	±1.5 per 6 pitch
Exposed Adhesive	S	0.8 max
Tape Width	T	6.0 ± 0.4
Empty Spaces		< 0.1%
<b>Polarity Marking</b>	All polarized components shall be oriented in the same direction. The cathode tape shall be colored, and the anode tape shall be white or light beige. Anode end must face label-side of reel. See AP02006 for label placement.	