

Mechanical Data

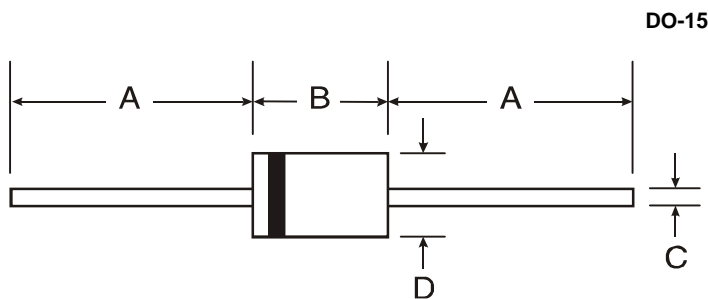
- Through-Hole Package
- Weight: 0.400 grams (Approximate)
- Case Material – Molded Plastic, UL Flammability Rating 94V-0
- Terminals: Finish – Matte Tin Plated Leads, Solderable per MIL-STD-202, Method 208 (e3)

Package View



Top View

Package Outline Dimensions



DO-15		
Dim	Min	Max
A	25.40	-
B	5.50	7.62
C	0.686	0.889
D	2.60	3.60
All Dimensions in mm		

Note: For high voltage applications, the appropriate industry sector guidelines should be considered with regards to creepage and clearance.

Minimum Packing Quantity

Package Type	Quantity per Box
Bulk - Loose	500/ 800/ 1,000*
13" Tape and Reel	4,000
Ammo Pack	2,000

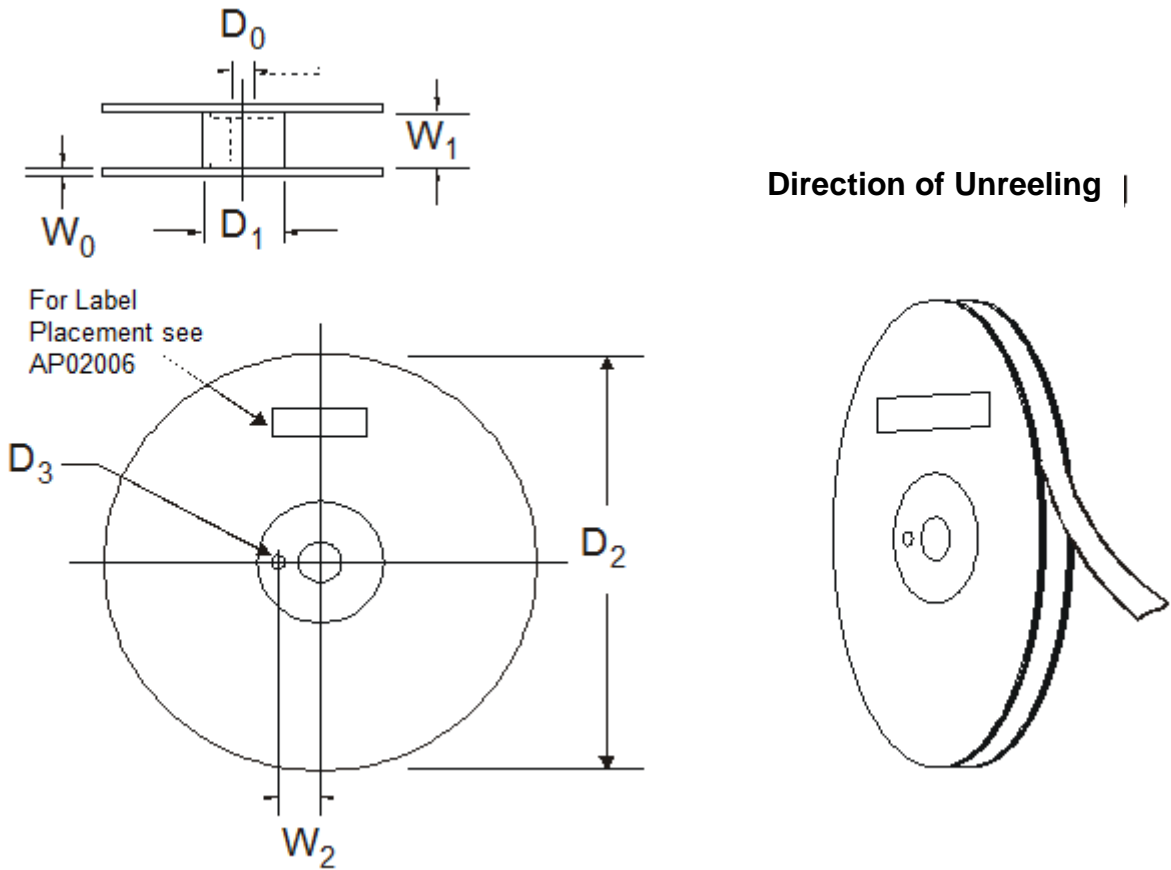
*Quantity Varies by Part Number

Note: Package quantities given are for minimum packaging quantity only, not minimum order quantity. For minimum order quantity, please contact Sales Department.

Note: No mixed date codes or partial quantity (less than minimum packaging quantity) per packaging is allowed.

Note: In no case shall there be two or more consecutive components missing from any reel for any reason.

Product Reel Dimensions

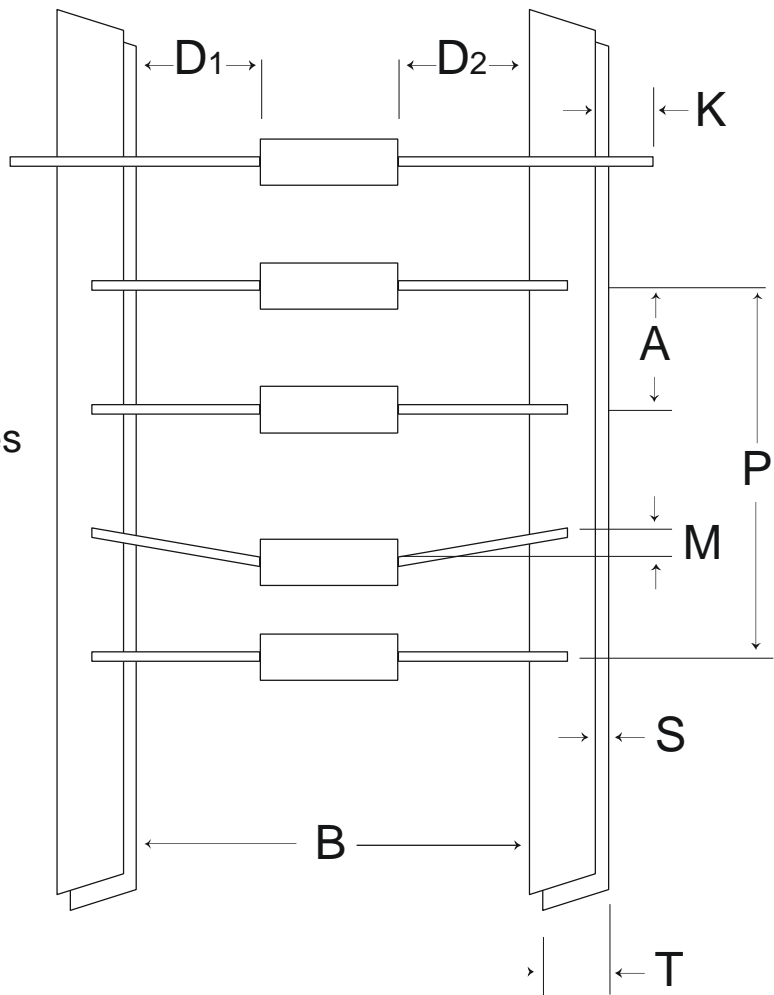


PRODUCT REEL		
Description	Symbol	Specification (mm)
Arbor Hole Diameter	D0	16.6 ± 0.50
Core Diameter (O.D)	D1	81.0 (Typical)
Reel Diameter	D2	345.0 ± 15.0
Drive Hole Diameter	D3	9.5 ± 0.5
Material Thickness	W0	2.0 – 4.0
Reel Width	W1	80.0 ± 5.0
Drive/ Arbor Hole Spacing	W2	27.5 ± 0.5

Core material: plastic (blue/black) or metal (neutral)
 Reel material: corrugated board or plastic (blue or black)

Reel/ Ammo Taping Specifications

Dimensions A, M, K, P, S, & T apply to both sides



REEL AND AMMO PACK TAPING SPECIFICATIONS		
Description	Symbol	Specification (mm)
Component Pitch	A	5.0 ± 0.5
Inside Tape Spacing	B	52.4 ± 1.5
Lead to Lead Eccentricity	D1 - D2	1.4 max
Lead Extension	K	0.8 max
Lead Bending	M	1.2 max
Cumulative Pitch	P	±1.5 per 6 pitch
Exposed Adhesive	S	0.8 max
Tape Width	T	6.0 ± 0.4
Empty Spaces		< 0.1%
Polarity Marking	All polarized components shall be oriented in the same direction. The cathode tape shall be colored, and the anode tape shall be white or light beige. Anode end must face label-side of reel. See AP02006 for label placement.	

Consecutive missing components not allowed.