

## ZXCT1082EV1 USER GUIDE

### Performance

- Current Monitor with wide supply range: 2.7V to 60V
- Independent chip supply and supply-to-be-monitored
- Low quiescent current (25 $\mu$ A typ)
- Total error 3% using 1% external resistors
- Ambient temperature range -40 to 105 $^{\circ}$ C

### Introduction

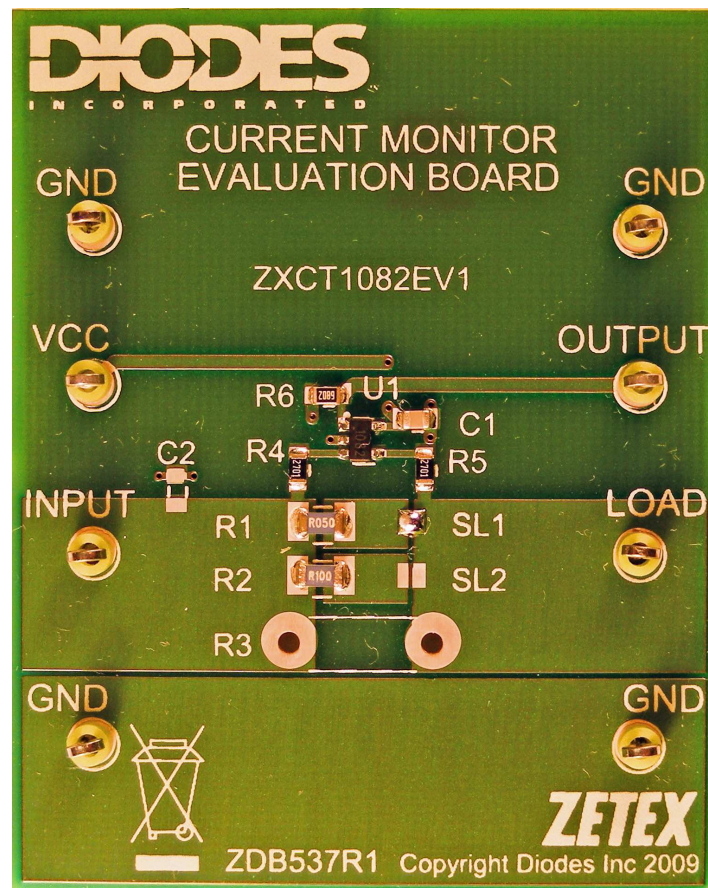
This evaluation circuit simply demonstrates the ZXCT1082 60V High-Side Current Monitor. The circuit is suitable for a wide range of power systems including automotive and industrial applications as well as portable and battery management systems.

The sensitivity of the PCB can be selected using solder bridge links to either 1.25V or 2.5V per Ampere of load current.

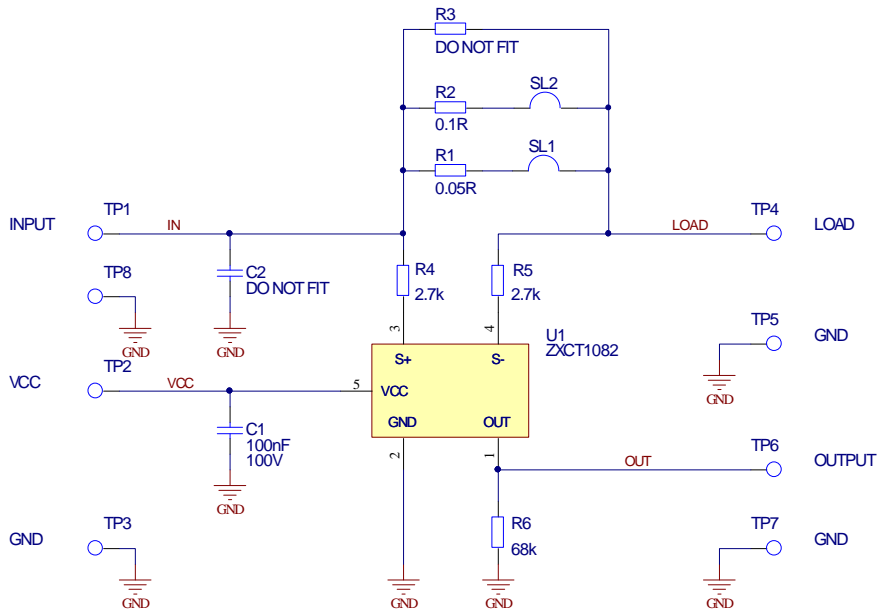
The construction is a double-sided FR4 printed circuit board, 51 x 64 x 1.6 mm with 2oz/sq ft copper (70 $\mu$ m).

### Ordering Information

Order Number
ZXCT1082EV1



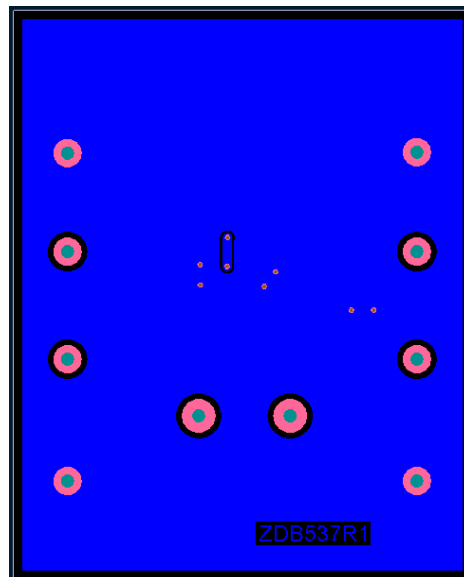
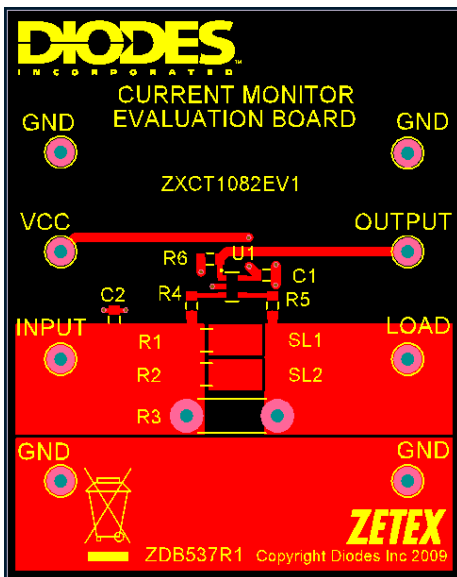
Schematic



PCB Layout

Top

Bottom



### Parts List

Count	Designator	Description	Package	Manufacturer	Part Number
1	C1	Capacitor SMD, 100nF 100V X7R	0805	AVX	08051C104KAZ2A
0	C2	NOT FITTED			
1	R1	Resistor, SMD, 0R05 1% 500mW 100ppm/ °C	1206	Welwyn	LR1206-R05FI
1	R2	Resistor, SMD, 0R1 1% 500mW 100ppm/ °C	1206	Welwyn	LR1206-R10FI
1	R3	NOT FITTED			
2	R4, R5	Resistor, SMD, 2.7k 1% 125mW, 250ppm/°C	0805	various	
1	R6	Resistor, SMD, 68k 1% 125mW, 250ppm/°C	0805	various	
1	U1	ZXCT1082	SOT23-5	Diodes	ZXCT1082E5TA

### I/O and Test points

Count	Designator	Description	Function	Manufacturer	Part Number
1	TP1	Loop Terminal, 2.15mm, green	Input	Hughes	100-108
1	TP2	Loop Terminal, 2.15mm, green	Vcc	Hughes	100-108
1	TP3	Loop Terminal, 2.15mm, green	Ground	Hughes	100-108
1	TP4	Loop Terminal, 2.15mm, green	Load	Hughes	100-108
1	TP5	Loop Terminal, 2.15mm, green	Ground	Hughes	100-108
1	TP6	Loop Terminal, 2.15mm, green	Output	Hughes	100-108
1	TP7	Loop Terminal, 2.15mm, green	Ground	Hughes	100-108
1	TP8	Loop Terminal, 2.15mm, green	Ground	Hughes	100-108

### Recommended Operating Conditions

Symbol	Parameter	Min	Max	Units
V <sub>in</sub>	Input Voltage	2.7	60	V
V <sub>cc</sub>	Supply Voltage	2.7	60	V
V <sub>out</sub>	Output Voltage	0	Load voltage -1V	V
T <sub>A</sub>	Operating Ambient Temperature	-40	105	°C

---

## Detailed Description

The voltage gain is set to 25 according to the resistors R4 and R6. Two current sense resistors are provided, which can be selected by solder bridge links. In the initial factory setting, SL1 is connected and SL2 is not, so the sense resistor value is R1=50 milliohms, giving a sensitivity of 1.25V at the Output per Ampere of current in the sense resistor. The second sense resistor provided is 100 milliohms, providing a sensitivity of 2.5V per Ampere. Through-holes are provided for the user to fit an additional resistor R3 if desired.

If SL1 only is bridged, the sensitivity of the PCB assembly to load current is set by R1 which is a 1% tolerance thick film resistor of 50 milliohms.

The sense voltage is

$$V_{\text{SENSE}} = V_{\text{IN}} - V_{\text{LOAD}} = I_{\text{LOAD}} \cdot R1, \text{ i.e. } 50\text{mV per Amp}$$

The voltage gain is

$$V_{\text{OUT}}/V_{\text{SENSE}} = R6/R4 = 25.185$$

The sensitivity to current is

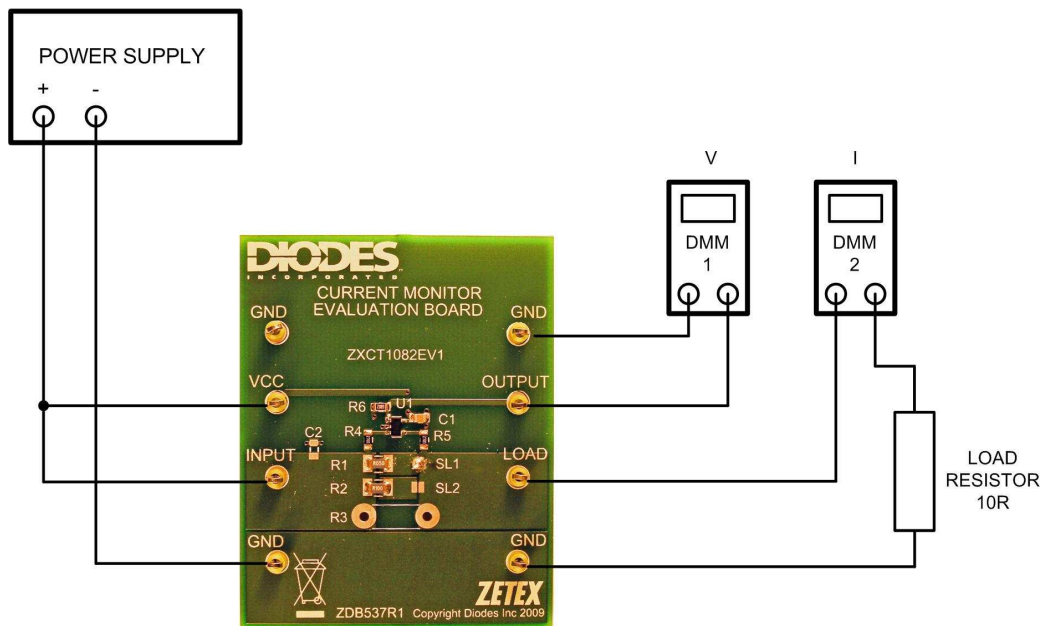
$$V_{\text{OUT}}/I_{\text{LOAD}} = (V_{\text{OUT}}/V_{\text{SENSE}}) \cdot (V_{\text{SENSE}}/I_{\text{LOAD}}) = (R6/R4) \cdot R1 = 1.259 \text{ V per Amp.}$$

If SL2 is bridged instead of SL1, the sense resistance will be 0.1R, so the sensitivity will then be 2.5185 V per Amp.

**Quick Start Guide**

Suitable test equipment is given in the table below.

1. Set the power supply to 10.0V but do not switch on. Set the current limit to 1.5A.
2. Check that on the ZXCT1082EV1 board, solder link SL1 is bridged and SL2 is open.
3. Connect up the ZXCT1082EV1 board to the equipment as in the diagram below. Set DMM1 to measure voltage and DMM2 to measure current.
4. Switch on the power supply. DMM2 should now read about 1.0A. Adjust the supply voltage slightly to obtain exactly  $1.000A \pm 0.005A$ .
5. DMM1 reads between 1.23V and 1.32V. Note that the reading may be slightly higher than the nominal value of 1.25V due to a volt drop of about 1mV in the PCB copper, and that the worst case tolerance is  $\pm 3\%$  due to the 1% resistors used.
6. Operation at 60V can be examined easily if the electronic load is available. Set the load to 1.00A and increase the power supply voltage to 60V.



**Suitable Test Equipment**

Count	Description	Manufacturer	Part Number
1	Adjustable Power Supply, 60V 2A	Thurlby Thandar	CPX400A
2	Digital Multimeter	Fluke	179
1	Load resistor, 10 ohms $\pm$ 5%, 10W, or electronic load, 60V 2A		

**INTENTIONALLY BLANK**

**INTENTIONALLY BLANK**

**IMPORTANT NOTICE**

DIODES INCORPORATED MAKES NO WARRANTY OF ANY KIND, EXPRESS OR IMPLIED, WITH REGARD TO THIS DOCUMENT, INCLUDING, BUT NOT LIMITED TO, THE IMPLIED WARRANTIES OF MERCHANTABILITY AND FITNESS FOR A PARTICULAR PURPOSE (AND THEIR EQUIVALENTS UNDER THE LAWS OF ANY JURISDICTION).

Diodes Incorporated and its subsidiaries reserve the right to make modifications, enhancements, improvements, corrections or other changes without further notice to this document and any product described herein. Diodes Incorporated does not assume any liability arising out of the application or use of this document or any product described herein; neither does Diodes Incorporated convey any license under its patent or trademark rights, nor the rights of others. Any Customer or user of this document or products described herein in such applications shall assume all risks of such use and will agree to hold Diodes Incorporated and all the companies whose products are represented on Diodes Incorporated website, harmless against all damages.

Diodes Incorporated does not warrant or accept any liability whatsoever in respect of any products purchased through unauthorized sales channels. Should Customers purchase or use Diodes Incorporated products for any unintended or unauthorized application, Customers shall indemnify and hold Diodes Incorporated and its representatives harmless against all claims, damages, expenses, and attorney fees arising out of, directly or indirectly, any claim of personal injury or death associated with such unintended or unauthorized application.

Products described herein may be covered by one or more United States, international or foreign patents pending. Product names and markings noted herein may also be covered by one or more United States, international or foreign trademarks.

**LIFE SUPPORT**

Diodes Incorporated products are specifically not authorized for use as critical components in life support devices or systems without the express written approval of the Chief Executive Officer of Diodes Incorporated. As used herein:

A. Life support devices or systems are devices or systems which:

1. are intended to implant into the body, or
2. support or sustain life and whose failure to perform when properly used in accordance with instructions for use provided in the labeling can be reasonably expected to result in significant injury to the user.

B. A critical component is any component in a life support device or system whose failure to perform can be reasonably be expected to cause the failure of the life support device or to affect its safety or effectiveness.

Customers represent that they have all necessary expertise in the safety and regulatory ramifications of their life support devices or systems, and acknowledge and agree that they are solely responsible for all legal, regulatory and safety-related requirements concerning their products and any use of Diodes Incorporated products in such safety-critical, life support devices or systems, notwithstanding any devices- or systems-related information or support that may be provided by Diodes Incorporated. Further, Customers must fully indemnify Diodes Incorporated and its representatives against any damages arising out of the use of Diodes Incorporated products in such safety-critical, life support devices or systems.

Copyright © 2009, Diodes Incorporated

[www.diodes.com](http://www.diodes.com)

**Sales offices****The Americas**

3050 E. Hillcrest Drive  
Westlake Village,  
CA 91362-3154  
Tel: (+1) 805 446 4800  
Fax: (+1) 805 446 4850

**Europe**

Kustermannpark  
Balanstraße 59,  
D-81541 München  
Germany  
Tel: (+49) 894 549 490  
Fax: (+49) 894 549 4949

**Taiwan**

7F, No. 50,  
Min Chuan Road  
Hsin-Tien  
Taipei, Taiwan  
Tel: (+886) 289 146 000  
Fax: (+886) 289 146 639

**Shanghai**

Rm. 606, No.1158  
Changning Road  
Shanghai, China  
Tel: (+86) 215 241 4882  
Fax (+86) 215 241 4891

**Shenzhen**

Room A1103-04,  
ANLIAN Plaza, #4018  
Jintian Road  
Futian CBD,  
Shenzhen, China  
Tel: (+86) 755 882 849 88  
Fax: (+86) 755 882 849 99

**Korea**

6 Floor, Changhwa B/D,  
1005-5 Yeongtong-dong,  
Yeongtong-gu, Suwon-si,  
Gyeonggi-do, Korea 443-813  
Tel: (+82) 312 731 884  
Fax: (+82) 312 731 885