

General Description

The PAM8906 PWM IN evaluation board user guide gives an overview of connecting the PAM8906 with an external PWM input piezo sounder.

Key Features

- Supply Input Voltage Range: 2.1V to 5.5V
- Intergraded Boost Converter with up to 36VPP output, supporting 10V, 12V, or 18V VOUT
- Automatic Shutdown and Wake-Up Control, supporting External PWM Input or Self-Excitation
- Low Current Consumption, with Shutdown Current <math>< 1\mu\text{A}</math>
- High-Speed Driver Designed with Very Short Turn-On/Turn-Off
- No Voltage Cross Output at Shutdown Mode, High Impedence Output at Shutdown Mode
- Available in the Space-Saving MSOP-10 Package

Evaluation Board Schematic

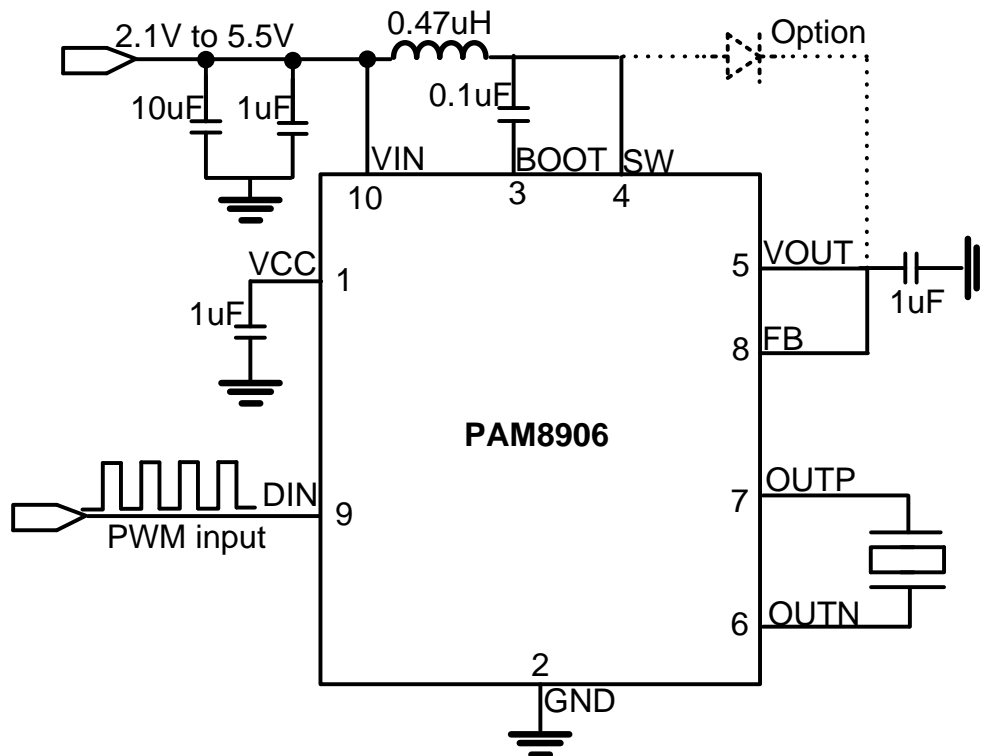


Figure 1. Evaluation Board Schematic

Evaluation Board View

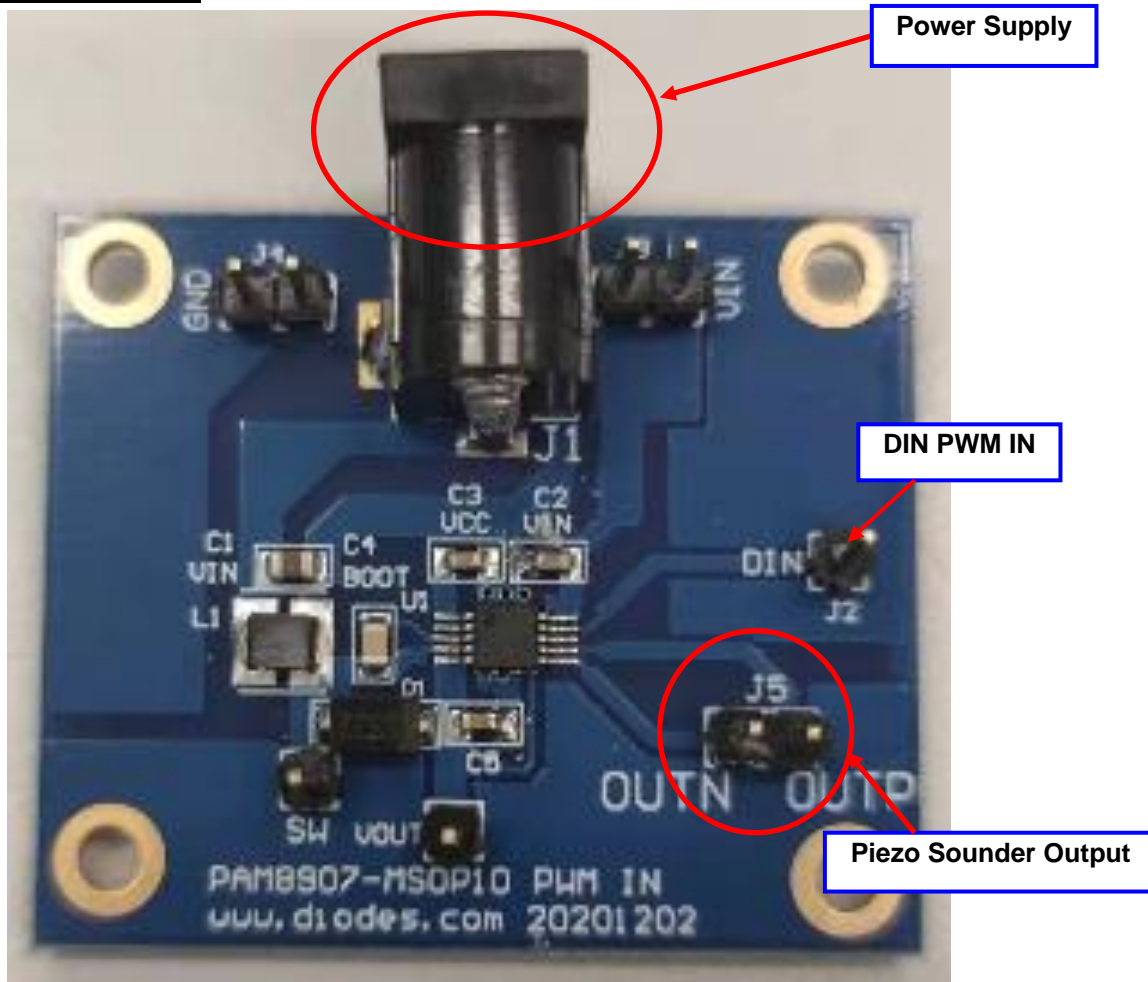


Figure 2. Evaluation Board View

EVB Operational Sequence

- Preset the power supply to be between 2.1V to 5.5V.
- Turn off the power supply.
- Connect power supply to EVB power.
- Connect the PIEZO to the output jack.
- Turn on the power supply.
- Press down the DIN button to enable the chip.

External Components Selection

Power Supply Decoupling Caps (C1, C2)

1. C1 must be placed very close to the inductor.
2. C3 must be placed very close to the IC VIN pin terminal.

Boot Output Capacitor (C4)

1. For lower output ripple, low ESR is required.
2. For low leakage current, 0.1 μ F, a X5R/X7R ceramic capacitor is recommended.

VCC Capacitor (C3)

1. 1 μ F, X5R/X7R ceramic capacitor is recommended.
2. Place close to the VCC pin terminal.

VOUT Capacitor (C5)

3. 1 μ F, X5R/X7R 25V ceramic capacitor is recommended.
4. Place close to the VOOUT pin terminal.

PCB Layout Guidelines

Ground

1. Use plane grounding or separate grounds.
2. For the VIN/VCC/VOOUT cap's ground, it is necessary to use a wide and short line to connect with GND (pin2).

Power Supply

1. Boost Power and VIN must be separated and tied together at the system power supply.
2. It is recommended to route all power supply traces to be as short and thick as possible.
3. Any barricades placed in the power supply trace may result in poor amplifier performance.

Components Placement

1. Power supply capacitors (C1,C2) should be placed very close to the L1 pin.
2. Power supply capacitor (C5) should be placed very close to the PAM8906 VOOUT pin.

PCB Layout Example

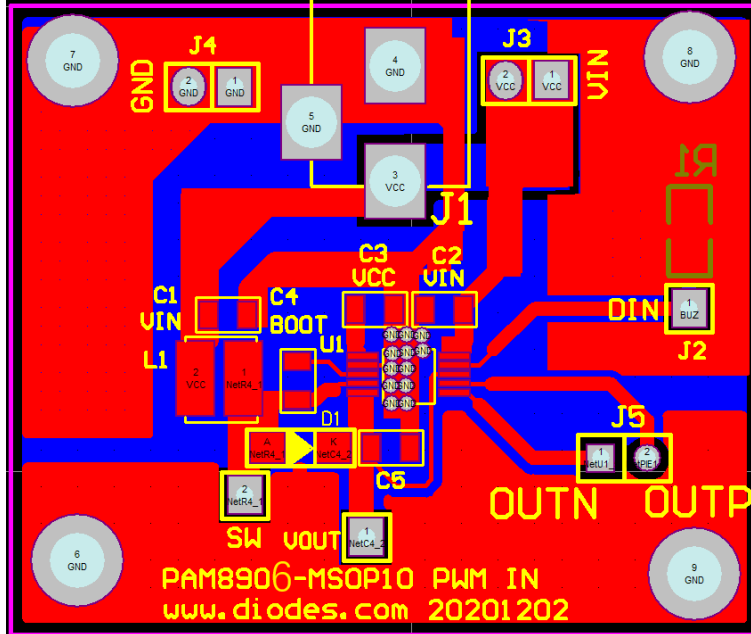


Figure 3. PCB Top Layer

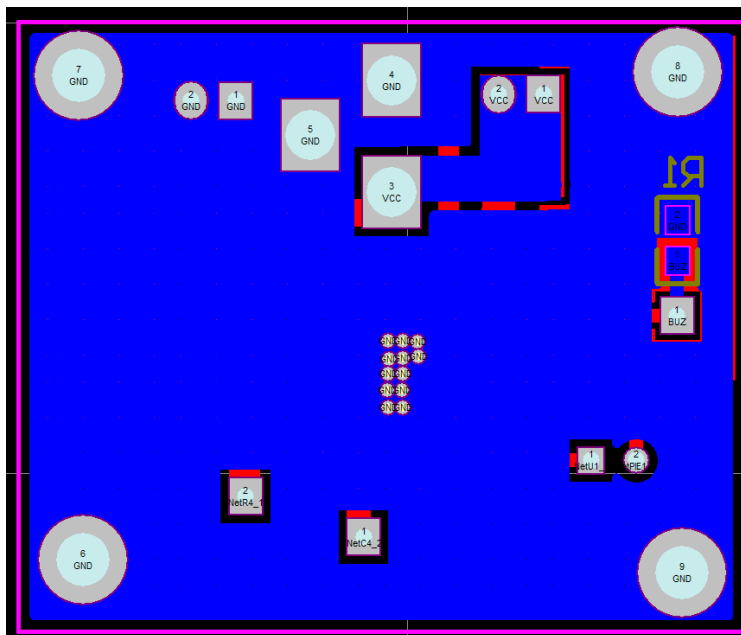


Figure 4. PCB Bottom Layer

Bill of Materials

Item	Value	Type	Rating	Description
C1	10uF	X5R/X7R, Ceramic/0805	10V	VBAT decoupling CAP
C2	1uF	X5R/X7R, Ceramic/0603	10V	VIN decoupling CAP
C3	1uF	X5R/X7R, Ceramic/0603	10V	VCC CAP
C4	0.1uF	X5R/X7R, Ceramic/0603	25V	Boot CAP
C5	1uF	X5R/X7R, Ceramic/0603	25V	Boost CAP
L1	0.47uH	2A	-	Boost inductance
IC1	-	PAM8906	-	-

IMPORTANT NOTICE

1. DIODES INCORPORATED (Diodes) AND ITS SUBSIDIARIES MAKE NO WARRANTY OF ANY KIND, EXPRESS OR IMPLIED, WITH REGARDS TO ANY INFORMATION CONTAINED IN THIS DOCUMENT, INCLUDING, BUT NOT LIMITED TO, THE IMPLIED WARRANTIES OF MERCHANTABILITY, FITNESS FOR A PARTICULAR PURPOSE OR NON-INFRINGEMENT OF THIRD PARTY INTELLECTUAL PROPERTY RIGHTS (AND THEIR EQUIVALENTS UNDER THE LAWS OF ANY JURISDICTION).
2. The Information contained herein is for informational purpose only and is provided only to illustrate the operation of Diodes' products described herein and application examples. Diodes does not assume any liability arising out of the application or use of this document or any product described herein. This document is intended for skilled and technically trained engineering customers and users who design with Diodes' products. Diodes' products may be used to facilitate safety-related applications; however, in all instances customers and users are responsible for (a) selecting the appropriate Diodes products for their applications, (b) evaluating the suitability of Diodes' products for their intended applications, (c) ensuring their applications, which incorporate Diodes' products, comply the applicable legal and regulatory requirements as well as safety and functional-safety related standards, and (d) ensuring they design with appropriate safeguards (including testing, validation, quality control techniques, redundancy, malfunction prevention, and appropriate treatment for aging degradation) to minimize the risks associated with their applications.
3. Diodes assumes no liability for any application-related information, support, assistance or feedback that may be provided by Diodes from time to time. Any customer or user of this document or products described herein will assume all risks and liabilities associated with such use, and will hold Diodes and all companies whose products are represented herein or on Diodes' websites, harmless against all damages and liabilities.
4. Products described herein may be covered by one or more United States, international or foreign patents and pending patent applications. Product names and markings noted herein may also be covered by one or more United States, international or foreign trademarks and trademark applications. Diodes does not convey any license under any of its intellectual property rights or the rights of any third parties (including third parties whose products and services may be described in this document or on Diodes' website) under this document.
5. Diodes' products are provided subject to Diodes' Standard Terms and Conditions of Sale (<https://www.diodes.com/about/company/terms-and-conditions/terms-and-conditions-of-sales/>) or other applicable terms. This document does not alter or expand the applicable warranties provided by Diodes. Diodes does not warrant or accept any liability whatsoever in respect of any products purchased through unauthorized sales channel.
6. Diodes' products and technology may not be used for or incorporated into any products or systems whose manufacture, use or sale is prohibited under any applicable laws and regulations. Should customers or users use Diodes' products in contravention of any applicable laws or regulations, or for any unintended or unauthorized application, customers and users will (a) be solely responsible for any damages, losses or penalties arising in connection therewith or as a result thereof, and (b) indemnify and hold Diodes and its representatives and agents harmless against any and all claims, damages, expenses, and attorney fees arising out of, directly or indirectly, any claim relating to any noncompliance with the applicable laws and regulations, as well as any unintended or unauthorized application.
7. While efforts have been made to ensure the information contained in this document is accurate, complete and current, it may contain technical inaccuracies, omissions and typographical errors. Diodes does not warrant that information contained in this document is error-free and Diodes is under no obligation to update or otherwise correct this information. Notwithstanding the foregoing, Diodes reserves the right to make modifications, enhancements, improvements, corrections or other changes without further notice to this document and any product described herein. This document is written in English but may be translated into multiple languages for reference. Only the English version of this document is the final and determinative format released by Diodes.
8. Any unauthorized copying, modification, distribution, transmission, display or other use of this document (or any portion hereof) is prohibited. Diodes assumes no responsibility for any losses incurred by the customers or users or any third parties arising from any such unauthorized use.
9. This Notice may be periodically updated with the most recent version available at <https://www.diodes.com/about/company/terms-and-conditions/important-notice>

The Diodes logo is a registered trademark of Diodes Incorporated in the United States and other countries.
All other trademarks are the property of their respective owners.
© 2025 Diodes Incorporated. All Rights Reserved.

www.diodes.com