

Contents

- 1. Description**
- 2. Schematic**
- 3. PCB Layout**
- 4. Bill of Materials**
- 5. Vendors of peripheral components**

Application Note

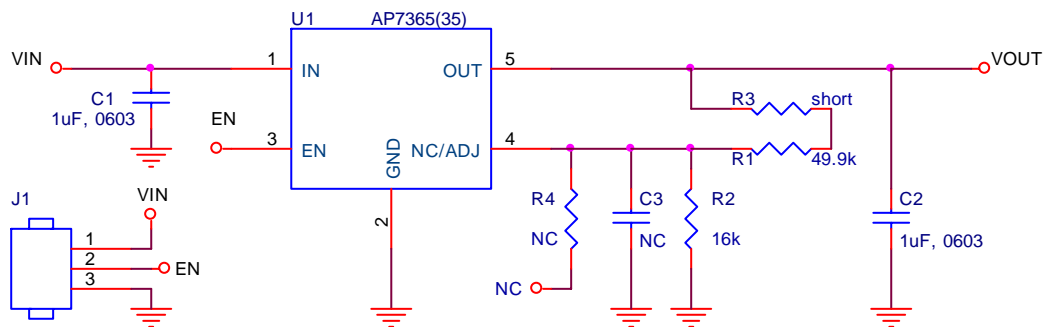
AP7365(35) Application Information and Demo Board User Guide

1. Description

The AP7365/35(LDO) evaluation modules (EVM) provide a means for the user to evaluate quickly the functionality and electrical performance of the AP7365/35 device. All inputs and outputs are brought out to test points for control and monitoring. All passive components are included on the EVM for device operation. The input pin should be connected to an external supply; the output should be connected to a load.

2. Schematic

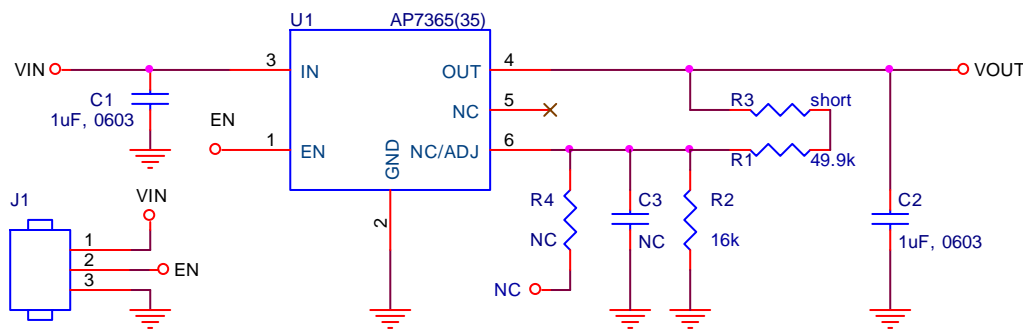
2.1 For SOT25 Package



$$V_{OUT}=0.8*(1+R1/R2) \text{ where } R2 = 80K\Omega$$

Figure 1. Low Dropout linear Regulator

2.2 For DFN2020-6 Package



$$V_{OUT}=0.8*(1+R1/R2) \text{ where } R2 = 80K\Omega$$

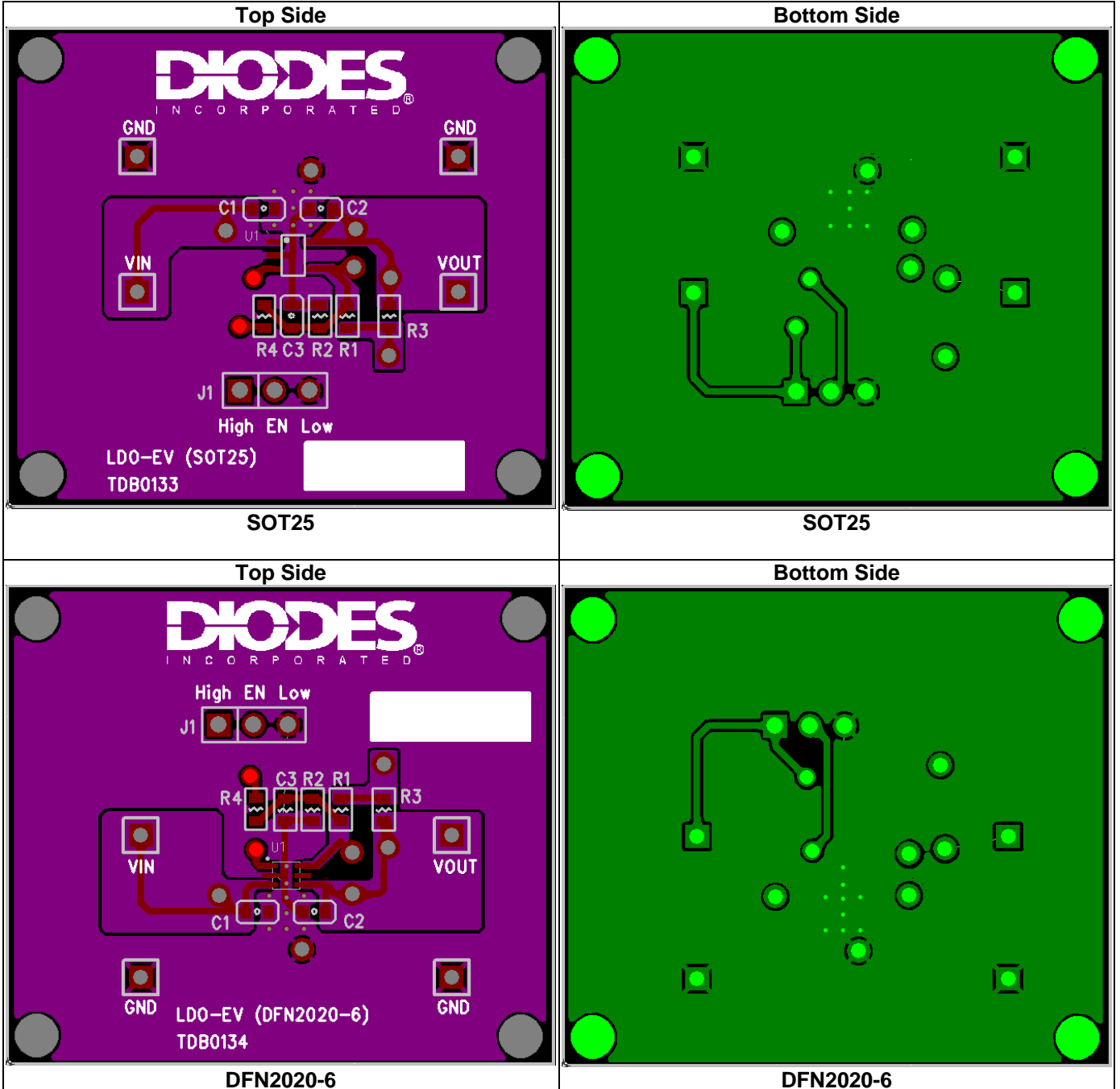
Figure 2. Low Dropout linear Regulator

This application note contains new product information. Diodes, Inc. reserves the right to modify the product specification without notice. No liability is assumed as a result of the use of this product. No rights under any patent accompany the sale of the product.

Application Note

AP7365(35) Application Information and Demo Board User Guide

3. PCB Layout(LDO)



This application note contains new product information. Diodes, Inc. reserves the right to modify the product specification without notice. No liability is assumed as a result of the use of this product. No rights under any patent accompany the sale of the product.

Application Note

AP7365(35) Application Information and Demo Board User Guide

4. Bill of Materials

Component Location	Q'ty	Specification	Source	Part No.	Size
C1,C2	2	Cap MLCC 1uF/10V/X5R	TAIYO YUDEN	LMK107BJ 105KK-T	C0603
C3, R4	0	NC	-	-	-
J1	1	0.1"*3 Header 1 and Jumper	-	-	7.5mmX 2.5mm
VIN, VOUT, GND	4	Header_1	-	-	2.2mmX 1.35mm
R3	1	Short	-	-	-
U1	1	LDO, AP7365(600mA), or AP7335(300mA)	Diodes Inc.	AP7365(35)	SOT25 or DFN2020-6
PCB	1	LDO-EV (SOT25) or LDO-EV (DFN2020-6)	Diodes Inc.	TDB0133 or TDB0134	1575milX 1385mil

Recommended Component Selection for Adj version :

V _{OUT}	R1(kΩ), 1%	R2(kΩ), 1%
0.8V	short	16
1.0V	5.1	20
1.2V	8.06	16
1.5V	14	16
1.8V	20	16
2.5V	51	24
3.3V	49.9	16
5V	84.5	16

5. Vendors of peripheral components

Suggested Capacitors for C_{IN} and C_{OUT} :

Vendor	Capacitance	Type	Series
TAIYO YUDEN	Cap MLCC 1uF/10V/X5R	SMD	LMK107BJ105KK-T

Suggested Resistor :

Vendor	Type	Series
YAGEO	SMD	RC0603FR-SK