

### DESCRIPTION

The AP61102 is a 1A, synchronous buck converter with an input voltage range of 2.3V to 5.5V and fully integrates a 120mΩ high-side power MOSFET and a 80mΩ low-side power MOSFET to provide high-efficiency step-down DC/DC conversion.

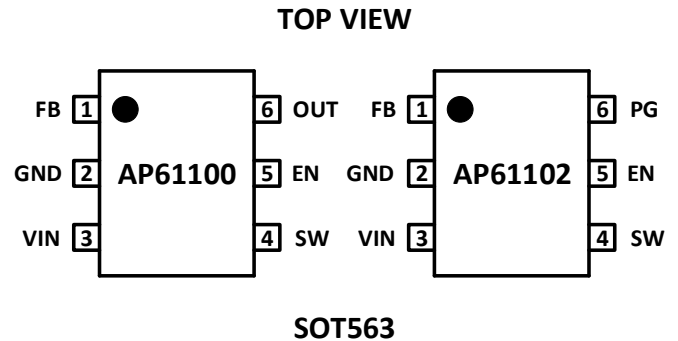
The AP61102 device is easily used by minimizing the external component count due to its adoption of constant on-time (COT) control to achieve fast transient responses, ease loop stabilization, and low output voltage ripple.

The device is available in a SOT563 package.

### FEATURES

- Input Range: 2.3V to 5.5V
- Wide Output Voltage Range: 0.6V to 5.5V
- 1A Continuous Output Current
- 0.6V ± 2% Reference Voltage
- 14μA Ultralow Quiescent Current (Pulse Frequency Modulation)
- 2.2MHz Switching Frequency
- Power Good Indicator
- Programmable Modulation Mode Through EN
  - PFM ( $V_{in} - V_{EN} < 200mV$ )
  - PWM Regardless of Output Load ( $V_{in} - V_{EN} > 200mV$ )
- Protection Circuitry
  - Undervoltage Lockout (UVLO)
  - VIN Overvoltage Protection (OVP)
  - Peak Current Limit
  - Valley Current Limit
  - Thermal Shutdown

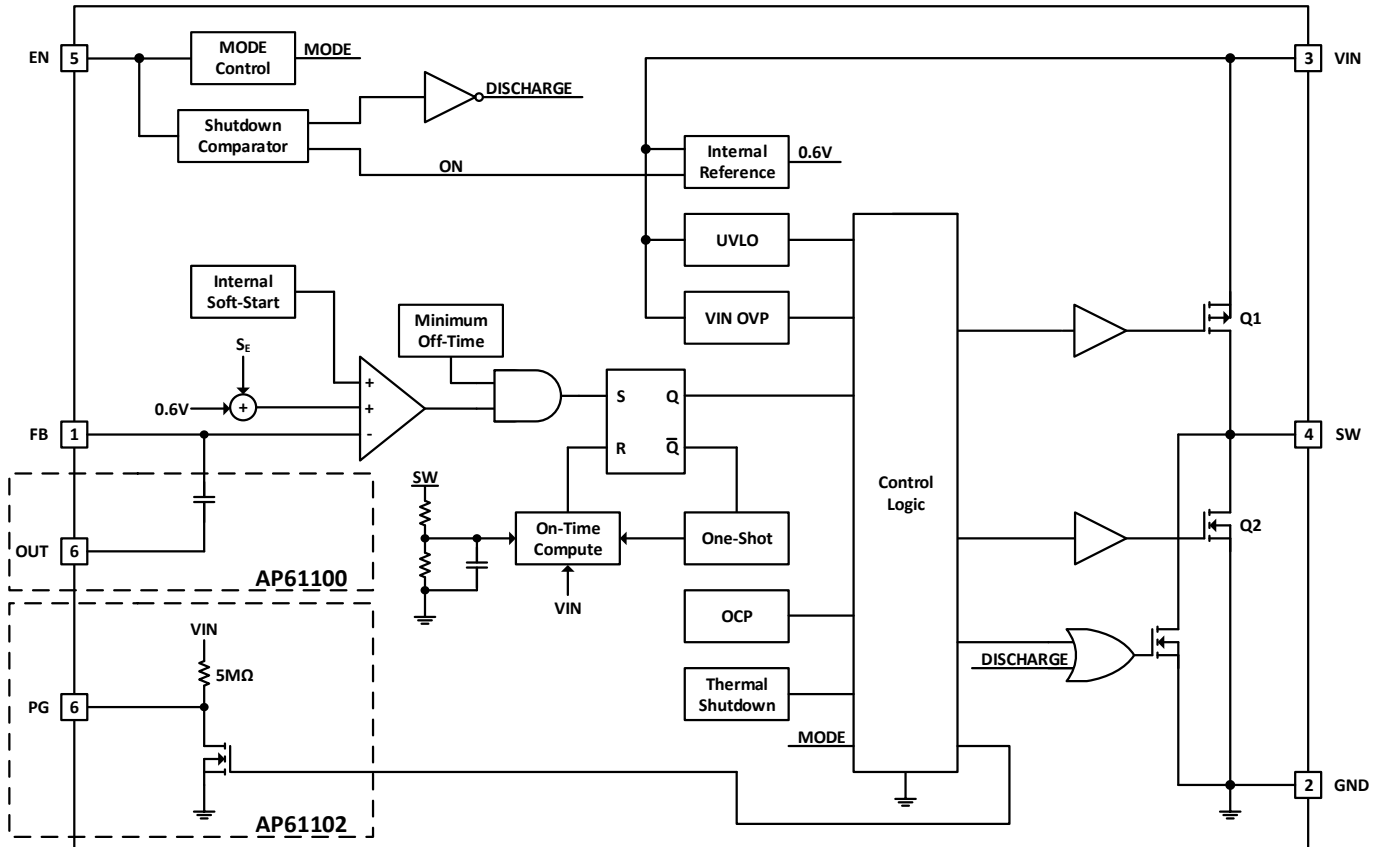
### PIN ASSIGNMENTS



### APPLICATIONS

- 5V Input Distributed Power Bus Supplies
- White Goods and Small Home Appliances
- FPGA, DSP, and ASIC Supplies
- Network Video Cameras
- Wireless Routers
- Consumer Electronics
- General Purpose Point of Load

**FUNCTIONAL BLOCK**



**Figure 1. Functional Block Diagram**

### ABSOLUTE MAXIMUM RATINGS (Note 4) (At $T_A = +25^\circ\text{C}$ , unless otherwise specified.)

Symbol	Parameter	Rating	Unit
VIN	Supply Pin Voltage	-0.3 to + 6.0 (DC)	V
		-0.3 to + 6.5(400ms)	
VFB	Feedback Pin Voltage	-0.3 to VIN + 0.3	V
VSW	Switch Pin Voltage	-1.0 to VIN + 0.3 (DC)	V
		-3 to VIN + 2.0 (20ns)	
VEN	Enable Pin Voltage	-0.3 to VIN + 0.3	V
VPG	Power-Good Pin Voltage	-0.3 to +6.0 (DC)	V
TST	Storage Temperature	-65 to +150	$^\circ\text{C}$
TJ	Junction Temperature	+150	$^\circ\text{C}$
TL	Lead Temperature	+260	$^\circ\text{C}$
<b>ESD Susceptibility (Note 5)</b>			
HBM	Human Body Model	2000	V
CDM	Charged Device Model	1000	V

- Notes:
- Stresses greater than the **Absolute Maximum Ratings** specified above may cause permanent damage to the device. These are stress ratings only; functional operation of the device at these or any other conditions exceeding those indicated in this specification is not implied. Device reliability may be affected by exposure to absolute maximum rating conditions for extended periods of time.
  - Semiconductor devices are ESD sensitive and may be damaged by exposure to ESD events. Suitable ESD precautions should be taken when handling and transporting these devices.

### RECOMMENDED OPERATING CONDITIONS (Note 7) (At $T_A = +25^\circ\text{C}$ , unless otherwise specified.)

Symbol	Parameter	Min	Max	Unit
VIN	Supply Voltage	2.3	5.5	V
VOUT	Output Voltage	0.6	5.5	V
$T_A$	Operating Ambient Temperature Range	-40	+85	$^\circ\text{C}$
$T_J$	Operating Junction Temperature Range	-40	+125	$^\circ\text{C}$

## **QUICK START GUIDE**

The AP61102Z6-EVM has a simple layout and allows access to the appropriate signals through test points. To evaluate the performance of the AP61102Z6-EVM, follow the procedure below:

1. For evaluation board configured at  $V_{OUT}=1.8V$ , connect a power supply to the input terminals  $V_{IN}$  and GND. Set  $V_{IN}$  to 5V.
2. Connect the positive terminal of the electronic load to  $V_{OUT}$  and negative terminal to GND.
3. For Enable, place a jumper to “H” position to enable IC. Jump to “L” position to disable IC.
4. The evaluation board should now power up with a 1.8V output voltage.
5. Check for the proper output voltage of 1.8V ( $\pm 2\%$ ) at the output terminals  $V_{OUT}$  and GND. Measurement can also be done with a multimeter with the positive and negative leads between  $V_{out}$  and GND.
6. Set the load to 1A through the electronic load. Check for the stable operation of the SW signal on the oscilloscope. Measure the switching frequency.

## **MEASUREMENT/PERFORMANCE GUIDELINES:**

- 1) When measuring the output voltage ripple, maintain the shortest possible ground lengths on the oscilloscope probe. Long ground leads can erroneously inject high frequency noise into the measured ripple.
- 2) For efficiency measurements, connect an ammeter in series with the input supply to measure the input current. Connect an electronic load to the output for output current. Test the input capacitor voltage and output capacitor voltage with a multimeter as input voltage and output voltage.

### Setting the Output Voltage of AP61102

#### 1) Setting the output voltage

The AP61102 features external programmable output voltage by using a resistor divider network R1 and R2 as shown in the typical application circuit. The output voltage is calculated as below,

$$V_{OUT} = 0.6 \times \left( \frac{R_1 + R_2}{R_2} \right)$$

First, select a value for R2 according to the value recommended in the table 1. Then, R2 is determined. The output voltage is given by Table 1 for reference. For accurate output voltage, 1% tolerance is required.

Table 1. Resistor selection for output voltage setting

Vo	R1	R2	Cff
1.1V	162 KΩ	200 KΩ	15 pF
1.8V	200 KΩ	100 KΩ	33 pF
3.3V	450 KΩ	100 KΩ	33 pF

### EXTERNAL COMPONENT SELECTION:

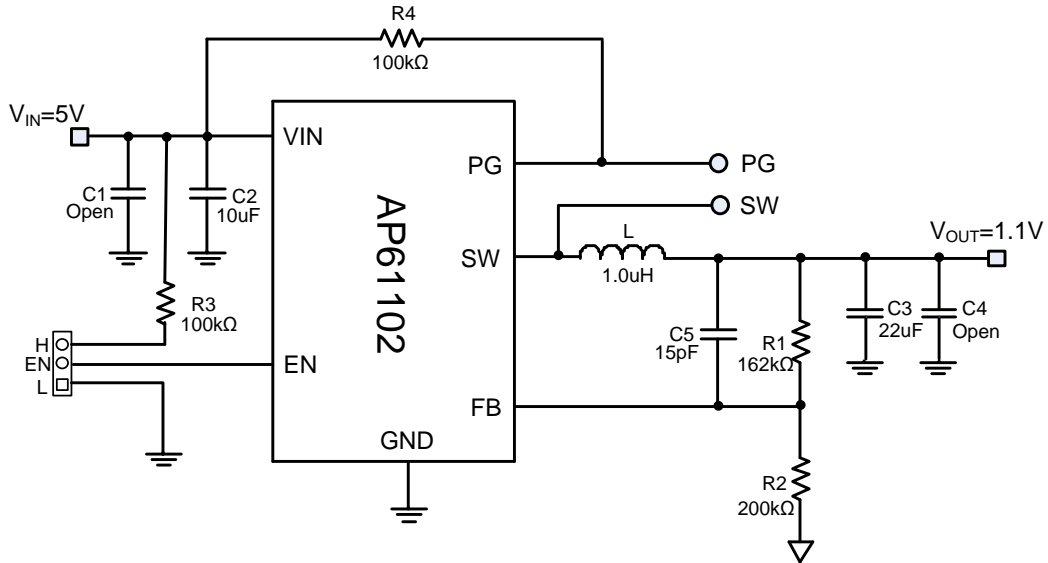
#### 1) Inductor (L)

- (1) Low DCR for good efficiency
- (2) Inductance saturate current must be higher than 2.5A
- (3) The recommended inductance is shown in the table 2 below.

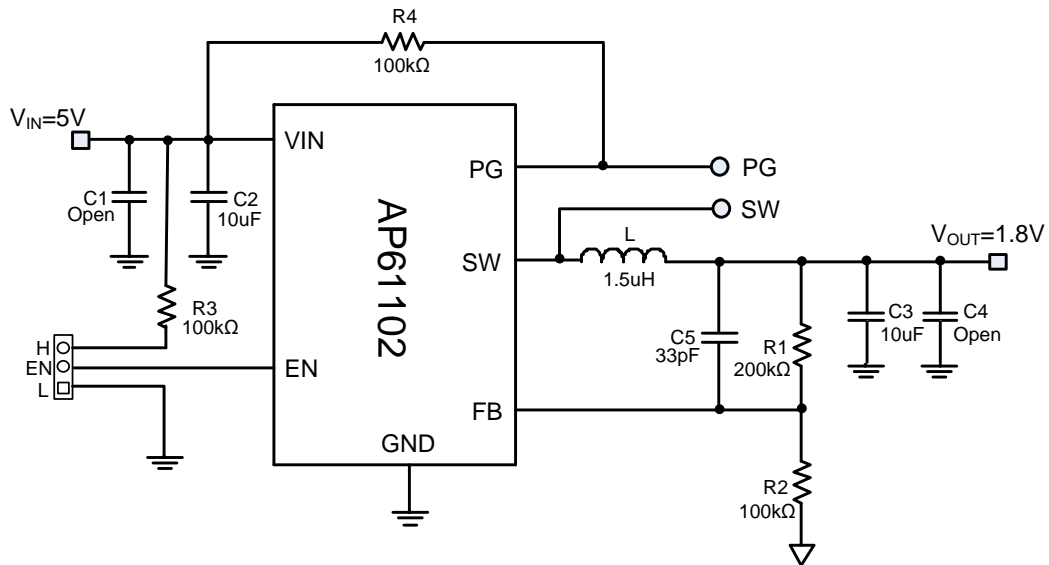
Table 2. Recommended inductors

Output Voltage	1.1V	1.8 V	3.3 V
Inductor	1.0 uH	1.5 uH	2.2 uH
Würth Elektronik	744 383 560 10	744 383 560 15	744 383 560 22
Output Capacitor	22 uF	10 uF	10 uF

**EVALUATION BOARD SCHEMATIC**



**Figure 2. Typical Application Circuit (Vo=1.1V)**



**Figure 3. Typical Application Circuit (Vo=1.8V)**

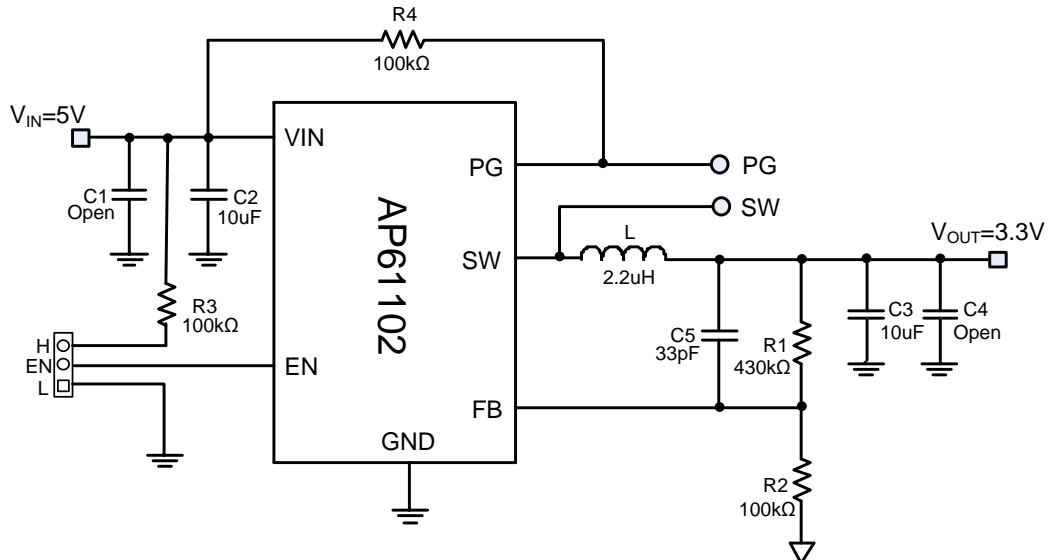


Figure 4. Typical Application Circuit (Vo=3.3V)

**PCB TOP LAYOUT**

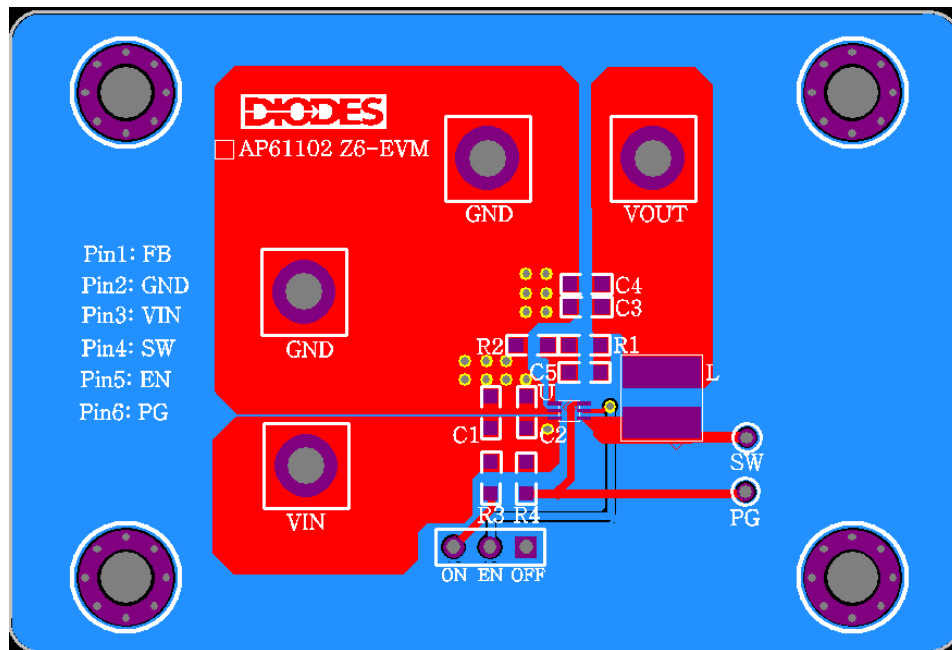


Figure 5. AP61102Z6 - EVM - Top Layer

**PCB BOTTOM LAYOUT**

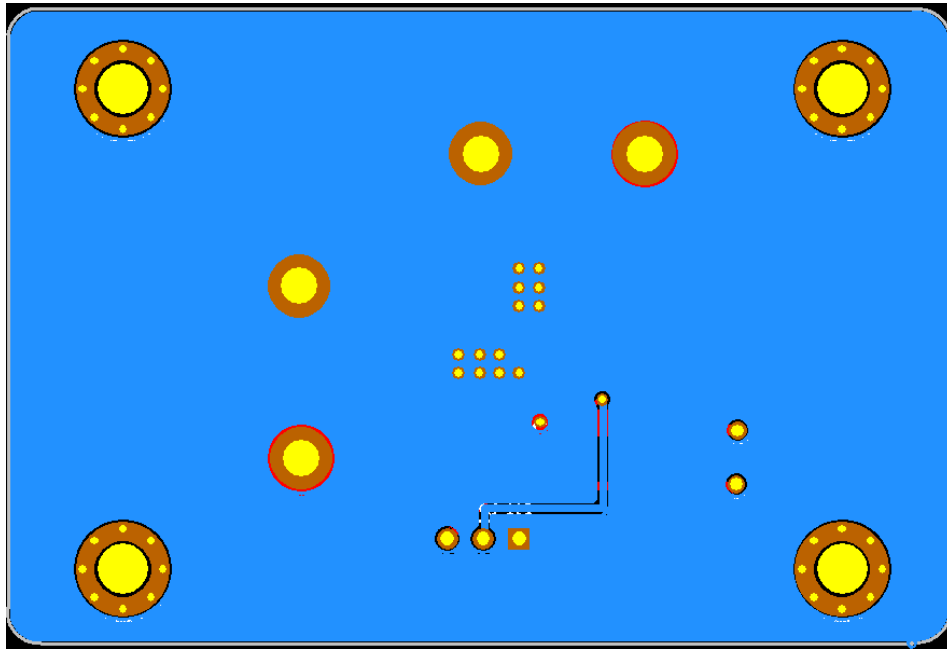


Figure 6. AP61102Z6 - EVM - Bottom Layer



### EV Board View

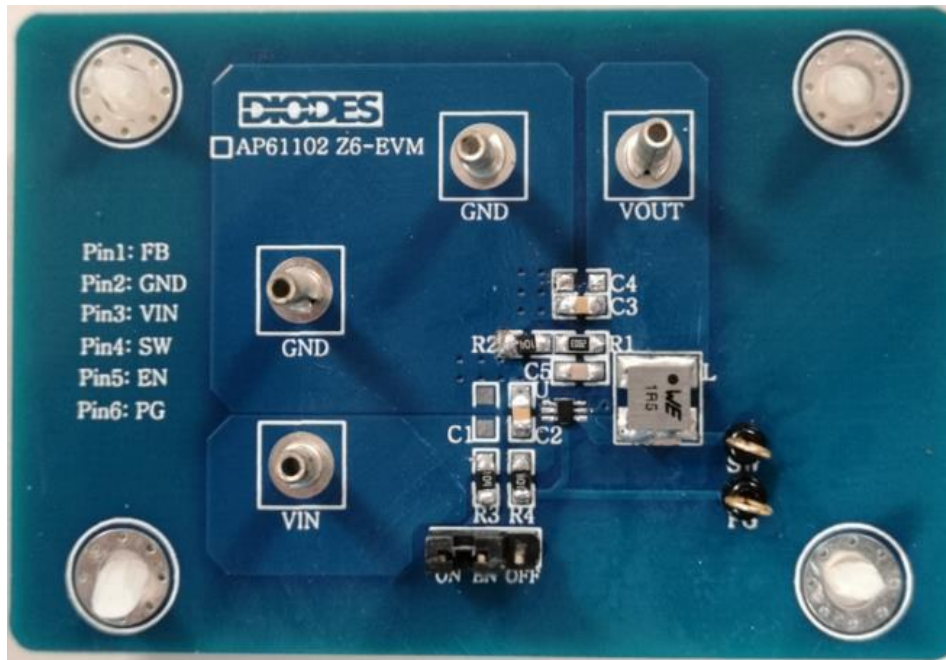
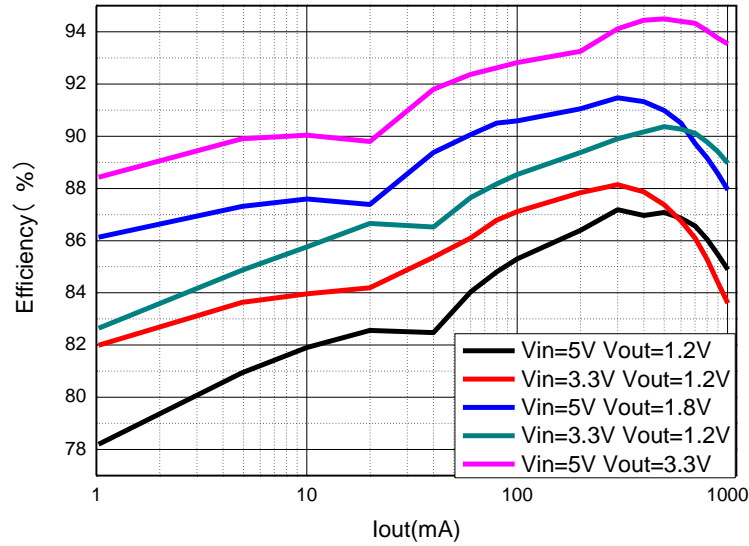


Figure 7. AP61102Z6 EV Board View

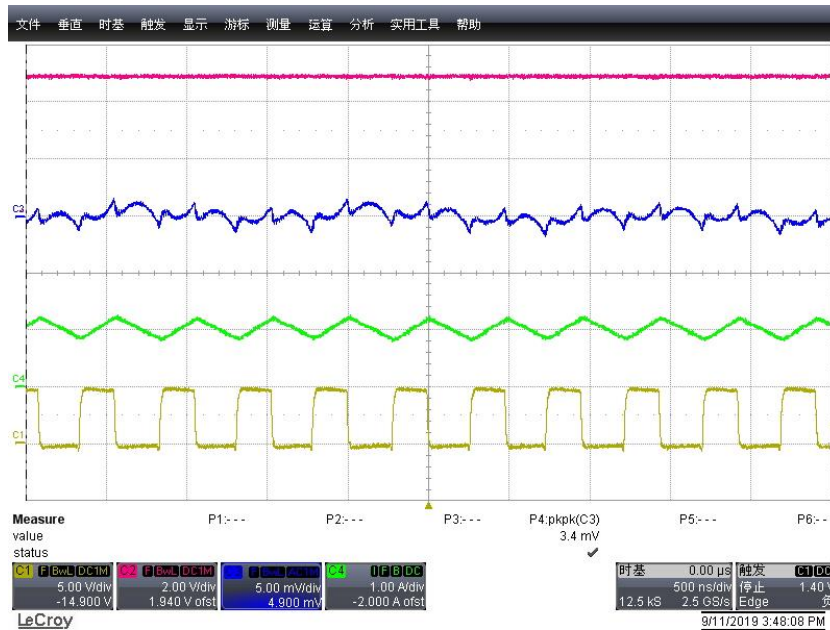
### BILL OF MATERIALS for AP61102Z6-EVM (V<sub>OUT</sub>=1.8V)

Item	Value	Type	Rating	Description
C2	10uF	X5R/X7R, Ceramic/0805	10V	Input CAP
C3	10uF	X5R/X7R, Ceramic/0805	6.3V	Output CAP
C5	33pF	X5R/X7R, Ceramic/0805	50V	Feedforward CAP
L	1.5uH	Würth Elektronik 744 383 560 15	7.8A	Inductor
R1	200K	1%, 0805	1%	Voltage set RES
R2	100K	1%, 0805	1%	
R3	100K	1%, 0805	1%	Enable RES
R4	100K	1%, 0805	1%	Power Good RES
U1		AP61102Z6		SOT563

**TYPICAL PERFORMANCE CHARACTERISTICS**



**Figure 8. Efficiency vs. Output Current**



**Figure 9. Output Voltage Ripple, I<sub>OUT</sub> =1A (V<sub>OUT</sub>=1.8V)**

**IMPORTANT NOTICE**

DIODES INCORPORATED MAKES NO WARRANTY OF ANY KIND, EXPRESS OR IMPLIED, WITH REGARDS TO THIS DOCUMENT, INCLUDING, BUT NOT LIMITED TO, THE IMPLIED WARRANTIES OF MERCHANTABILITY AND FITNESS FOR A PARTICULAR PURPOSE (AND THEIR EQUIVALENTS UNDER THE LAWS OF ANY JURISDICTION).

Diodes Incorporated and its subsidiaries reserve the right to make modifications, enhancements, improvements, corrections or other changes without further notice to this document and any product described herein. Diodes Incorporated does not assume any liability arising out of the application or use of this document or any product described herein; neither does Diodes Incorporated convey any license under its patent or trademark rights, nor the rights of others. Any Customer or user of this document or products described herein in such applications shall assume all risks of such use and will agree to hold Diodes Incorporated and all the companies whose products are represented on Diodes Incorporated website, harmless against all damages.

Diodes Incorporated does not warrant or accept any liability whatsoever in respect of any products purchased through unauthorized sales channel. Should Customers purchase or use Diodes Incorporated products for any unintended or unauthorized application, Customers shall indemnify and hold Diodes Incorporated and its representatives harmless against all claims, damages, expenses, and attorney fees arising out of, directly or indirectly, any claim of personal injury or death associated with such unintended or unauthorized application.

Products described herein may be covered by one or more United States, international or foreign patents pending. Product names and markings noted herein may also be covered by one or more United States, international or foreign trademarks.

This document is written in English but may be translated into multiple languages for reference. Only the English version of this document is the final and determinative format released by Diodes Incorporated.

**LIFE SUPPORT**

Diodes Incorporated products are specifically not authorized for use as critical components in life support devices or systems without the express written approval of the Chief Executive Officer of Diodes Incorporated. As used herein:

A. Life support devices or systems are devices or systems which:

1. are intended to implant into the body, or
2. support or sustain life and whose failure to perform when properly used in accordance with instructions for use provided in the labeling can be reasonably expected to result in significant injury to the user.

B. A critical component is any component in a life support device or system whose failure to perform can be reasonably expected to cause the failure of the life support device or to affect its safety or effectiveness.

Customers represent that they have all necessary expertise in the safety and regulatory ramifications of their life support devices or systems, and acknowledge and agree that they are solely responsible for all legal, regulatory and safety-related requirements concerning their products and any use of Diodes Incorporated products in such safety-critical, life support devices or systems, notwithstanding any devices- or systems-related information or support that may be provided by Diodes Incorporated. Further, Customers must fully indemnify Diodes Incorporated and its representatives against any damages arising out of the use of Diodes Incorporated products in such safety-critical, life support devices or systems.

Copyright © 2019, Diodes Incorporated

[www.diodes.com](http://www.diodes.com)