

General Description

The AL8862FF-7 is a step-down DC-DC converter designed to drive LEDs with a constant current. The AL8862FF-7 operates with an input supply voltage from 5V to 60V and provides an externally-adjustable output current up to 1A. Series connection of the LEDs provides identical LED currents, resulting in uniform brightness and eliminating the need for ballast resistors. The AL8862FF-7 switches at frequencies up to 1MHz. This allows the use of smaller-sized external components, hence minimizing the PCB size.

The AL8862FF-7 integrates the power switch and a high-side output current-sensing circuit. Maximum output current of the AL8862FF-7 is set via an external resistor connected between the VIN and SET input pins. Dimming is achieved by applying either a DC voltage or a PWM signal at the CTRL input pin. The soft-start time can be adjusted using an external capacitor from the CTRL pin to ground. An input voltage of 0.3V or lower at CTRL pin will shut down the power switch.

Applications

- Commercial & Industrial Lighting
- Appliances Interior Lighting
- Architecture Detail Lighting
- External Driver with Multiple Channels and smart Lighting

Key Features

- Wide Input Voltage Range: 5V to 60V
- Output Current up to 1A
- Internal 60V NDMOS Switch
- Typical 4% Output Current Accuracy
- Single Pin for On/Off and Brightness Control by DC Voltage or PWM Signal
- High-Efficiency (Up to 97%)
- LED Short-Circuit Protection
- Inherent Open-Circuit LED Protection
- Current-Sense Resistor Short-Circuit Protection
- Over temperature Shutdown
- Up to 1MHz Switching Frequency
- U-DFN3030-6 Packages Available in Green Molding Compound (No Br, Sb)

AL8862FFE2 Specifications

Parameter	Value
Input Voltage	5VDC to 60VDC
LED Current	1A
Number of LEDs	1~16 LEDs
XYZ Dimension	90mm x 60mm x 1.6mm



Figure 1: Top View



Figure 2: Bottom View

Connection Instructions

Power Supply Input: 5–60VDC (VIN, GND)

CTRL: Internal voltage ref. pin (2.5V). This pin can be used to achieve dimming and for switching the output current off. Leave floating for normal operation.

PWM Signal Input: Remove C1, apply PWM signal to CTRL (CTRL, GND)

Analog Signal Input: Connect 22nF capacitor to C1, apply analog signal to CTRL (CTRL, GND)

LED +: LED + connects to the external LED anode

LED -: LED - connects to the external LED cathode

Evaluation Board Schematic

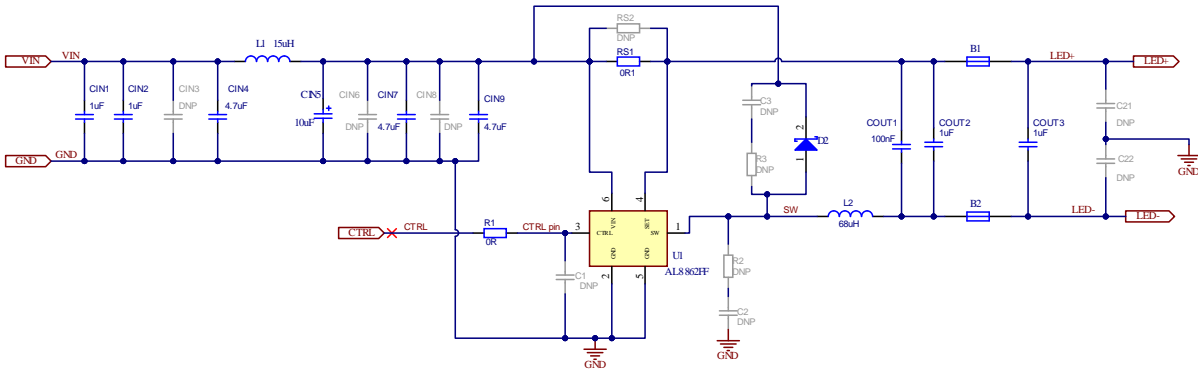


Figure 3: Evaluation Board Schematic

Evaluation Board Layout

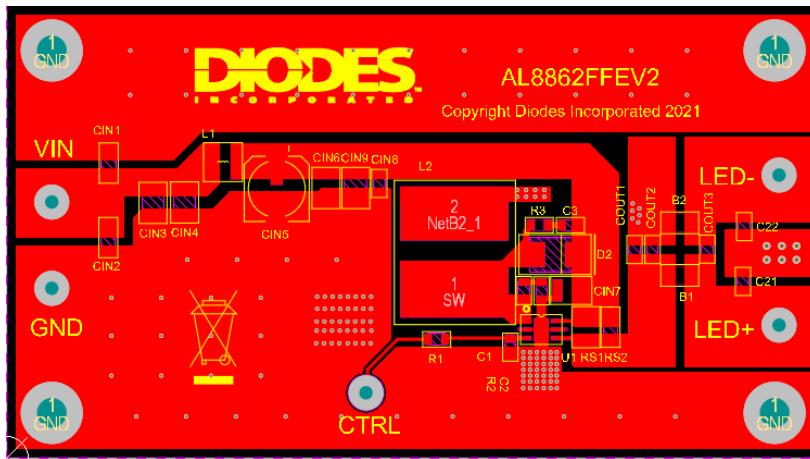


Figure 4: PCB Board Layout Top View

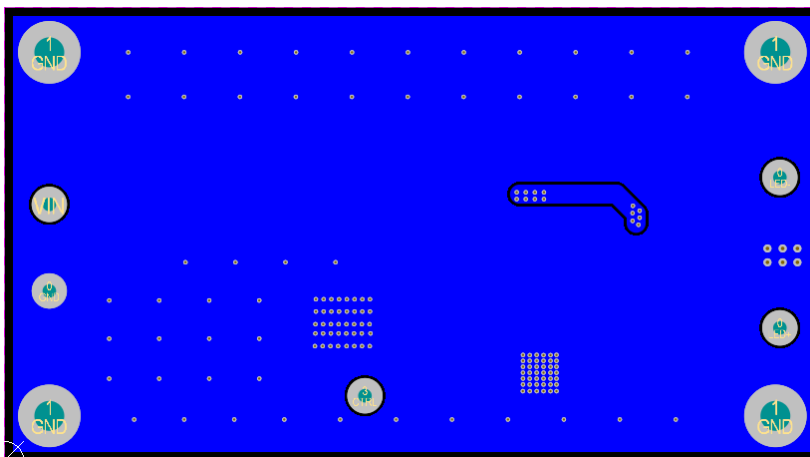


Figure 5: PCB Board Layout Bottom View

Quick Start Guide

1. By default, the evaluation board is preset at 1A LED Current by RS1.
2. Non-dimming operation: Leave CTRL pin floating for normal operation.
3. Power Supply: Connect the 5–60VDC to VIN & GND pin to supply the system and AL8862FF-7.
4. PWM Dimming: Remove C1, apply a PWM signal (low level < 0.3V and high level > 2.6V) to CTRL pin to dim the LEDs. The recommended PWM signal frequency is from 100Hz to 1 kHz, and the PWM duty is from 1% to 100%.
5. Analog Dimming: Connect 22nF capacitor to C1; the CTRL pin may be driven between 0.4V and 2.5V adjusting the output current from 10% to 100% of I_{LED} .

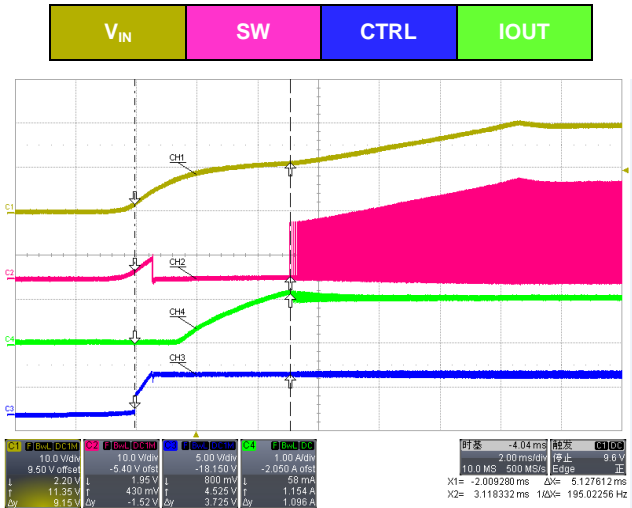
Bill of Material

DESIGNATOR	DESCRIPTION	PACKAGE	MANUFACTURER	PART NO.	QUANTITY
CIN1,CIN2	Ceramic Capacitor, 1uF, 100V, X7R, ±10%	1206	Generic	---	2
CIN4,CIN7,CIN9	Ceramic Capacitor, 4.7uF, 100V, X7R, ±10%	1210	Generic	---	3
CIN5	Electrolytic Capacitor, 10uF, 100V	Ø6.3mm x 8mm	Würth Elektronik	865080845005	1
COU1	Ceramic Capacitor, 100nF, 100V, X7R, ±10%	0805	Generic	---	1
COU2,COU3	Ceramic Capacitor, 1uF, 100V, X7R, ±10%	0805	Generic	---	2
RS1	Resistor, Chip, 0R1,1%,	1210	Generic	---	1
R1	Resistor, Chip, 0R0	0805	Generic	---	1
D2	2.0A HIGH VOLTAGE SCHOTTKY BARRIER RECTIFIER	SMB	Diodes	B2100	1
U1	60V 1A STEP-DOWN LED DRIVER	U-DFN3030-6	Diodes	AL8862FF-7	1
L1	15uH,0.13R,1.45A	4025	Würth Elektronik	74404043150A	1
L2	68uH, ~0.1R, ~1.9A	1050	Würth Elektronik	7447714680	1
B1,B2	EMI 60Ohms,5000mA	1206	Würth Elektronik	7427922	2
VIN,LED+	Connector, Red color	DIP	---	---	2
LED-	Connector, Black color	DIP	---	---	1
GND	Connector, White color	DIP	---	---	1
CTRL	Connector, Orange color	DIP	---	---	1

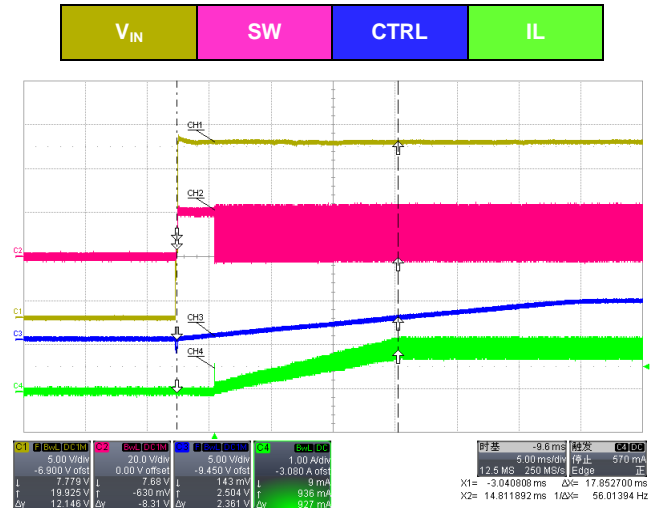
Note: The component part numbers are correct at the time of publication. Diodes Incorporated reserves the right to substitute other parts where necessary, without further notification.

Functional Waveforms

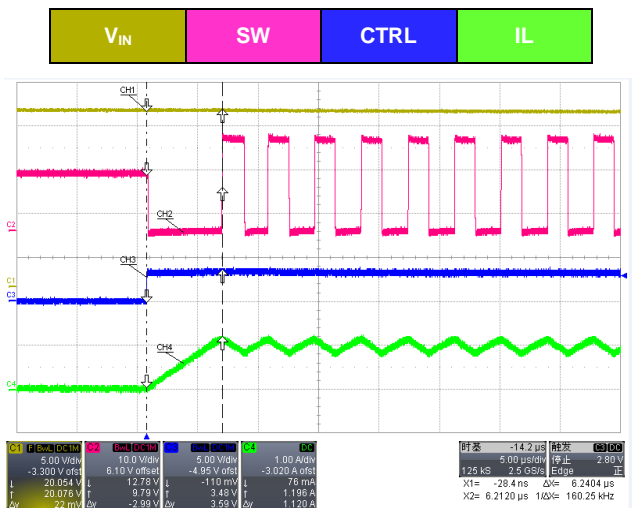
Start-up waveform (Vin=20V, 3LEDs)
Vin Slew Rate=10(V/ms)



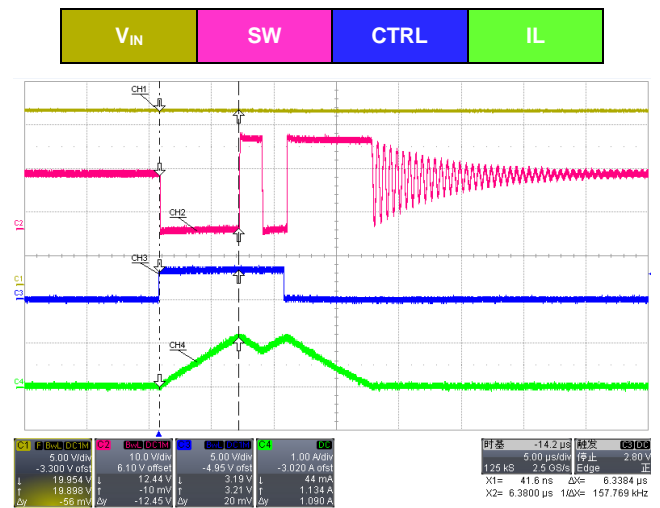
Soft Start waveform (Vin=20V, 3LEDs, C1=10nF)



Startup waveform under PWM dimming (Vin=20V, 3LEDs)
(PWM frequency=1KHz, Duty=50%)

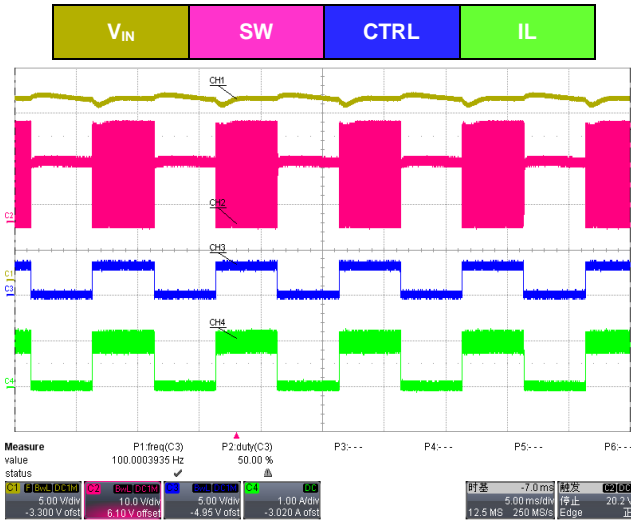


Startup waveform under PWM dimming (Vin=20V, 3LEDs)
(PWM frequency=10KHz, Duty=50%)

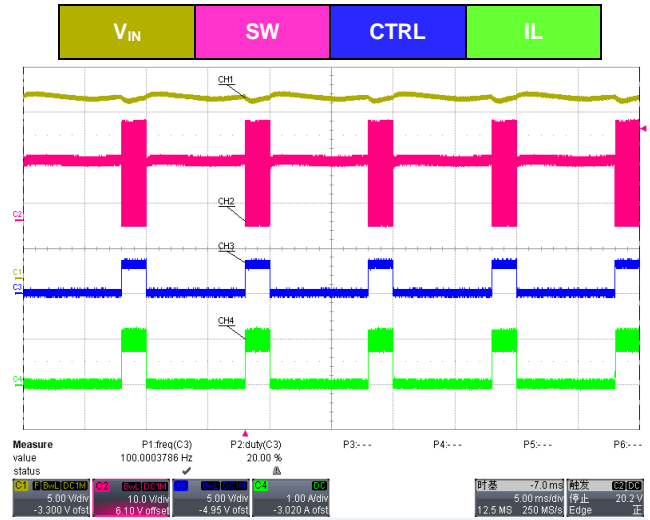


Functional Waveforms

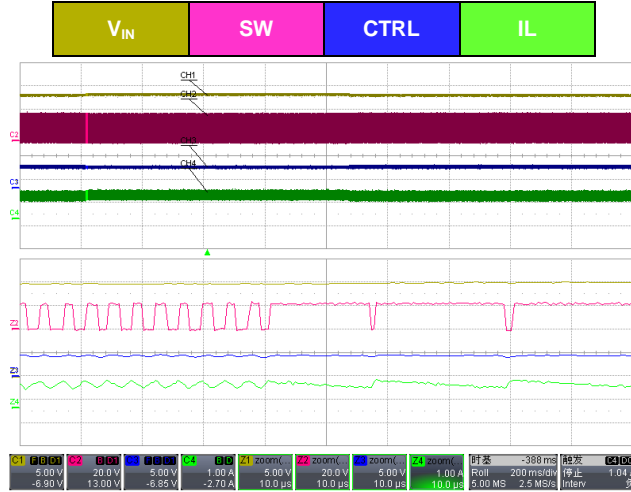
PWM Dimming waveform(Vin=20V, 3LEDs)
(PWM frequency=100Hz, Duty=50%)



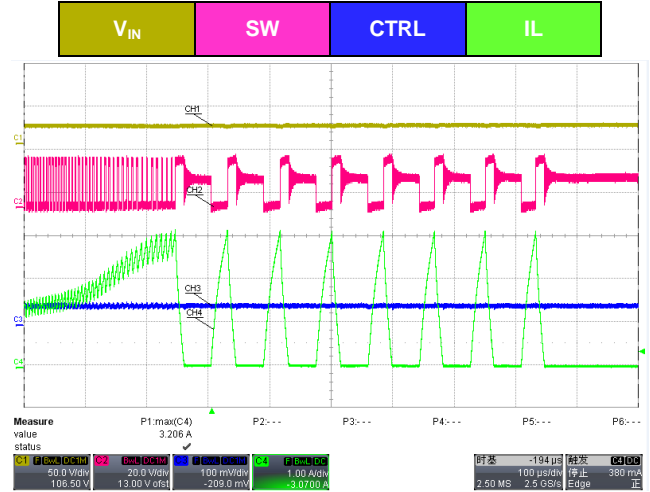
PWM Dimming waveform(Vin=20V, 3LEDs)
(PWM frequency=100Hz, Duty=20%)



Protection_LED short
(Vin=20V, 3LEDs)

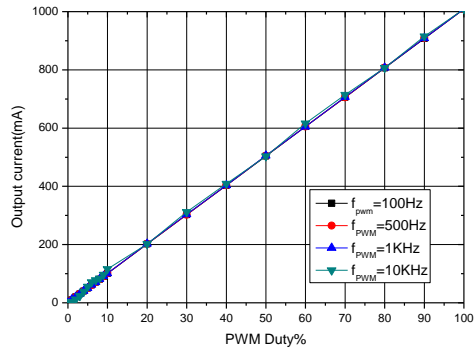


Protection_Rsense short
(Vin=20V, 3LEDs)

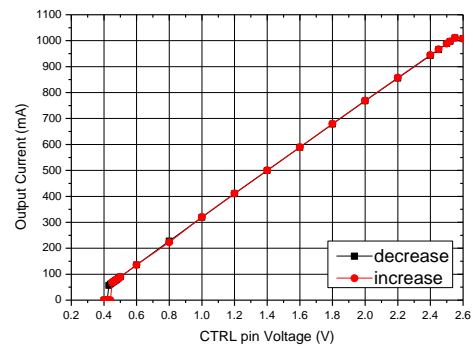


Functional Data Curves

PWM Dimming (Vin=20V, 3LEDs)



Analog Dimming (Vin=20V, 3LEDs)



CISPR15 EMI Performance

Figure 6 presents the EMI performance of the AL8862FFEV2 EVB at 20V input with 3LEDs load. Conducted emissions are measured over a frequency range of 150 kHz to 30 MHz according to the CISPR 15 low-frequency specification. CISPR15 peak and average limit lines are denoted in red. The blue and black spectra are measured using peak and average detection, respectively.

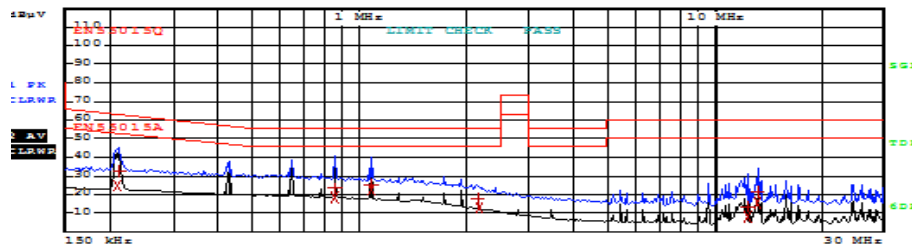


Figure 6: CISPR 15 Conducted Emissions Plot, 150 kHz to 30 MHz, VIN = 20 V, IOU T = 1A, 3LEDs

Thermal Test

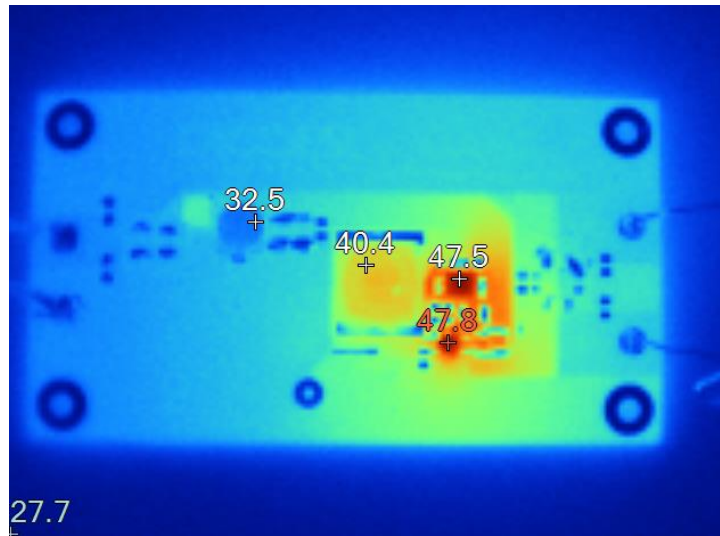


Figure 7: Top (Vin=20V, 3LEDs, Burn-in time=60min)

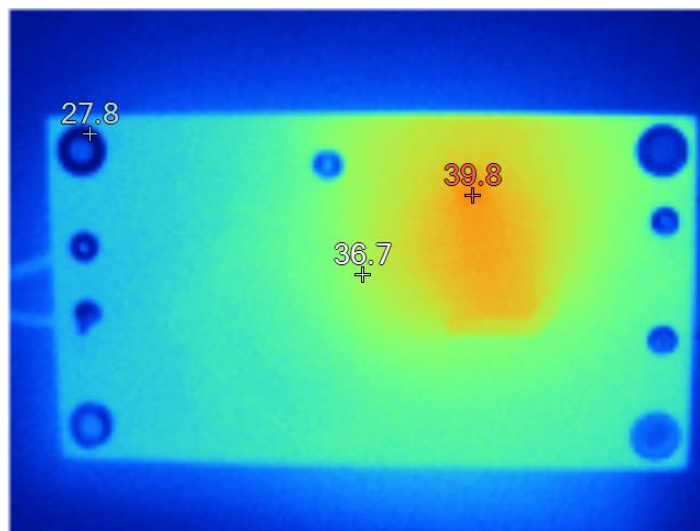


Figure 8: Bottom (Vin=20V, 3LEDs, Burn-in time=60min)

IMPORTANT NOTICE

1. DIODES INCORPORATED AND ITS SUBSIDIARIES (“DIODES”) MAKE NO WARRANTY OF ANY KIND, EXPRESS OR IMPLIED, WITH REGARDS TO ANY INFORMATION CONTAINED IN THIS DOCUMENT, INCLUDING, BUT NOT LIMITED TO, THE IMPLIED WARRANTIES OF MERCHANTABILITY, FITNESS FOR A PARTICULAR PURPOSE OR NON-INFRINGEMENT OF THIRD PARTY INTELLECTUAL PROPERTY RIGHTS (AND THEIR EQUIVALENTS UNDER THE LAWS OF ANY JURISDICTION).
2. The Information contained herein is for informational purpose only and is provided only to illustrate the operation of Diodes products described herein and application examples. Diodes does not assume any liability arising out of the application or use of this document or any product described herein. This document is intended for skilled and technically trained engineering customers and users who design with Diodes products. Diodes products may be used to facilitate safety-related applications; however, in all instances customers and users are responsible for (a) selecting the appropriate Diodes products for their applications, (b) evaluating the suitability of the Diodes products for their intended applications, (c) ensuring their applications, which incorporate Diodes products, comply the applicable legal and regulatory requirements as well as safety and functional-safety related standards, and (d) ensuring they design with appropriate safeguards (including testing, validation, quality control techniques, redundancy, malfunction prevention, and appropriate treatment for aging degradation) to minimize the risks associated with their applications.
3. Diodes assumes no liability for any application-related information, support, assistance or feedback that may be provided by Diodes from time to time. Any customer or user of this document or products described herein will assume all risks and liabilities associated with such use, and will hold Diodes and all companies whose products are represented herein or on Diodes’ websites, harmless against all damages and liabilities.
4. Products described herein may be covered by one or more United States, international or foreign patents and pending patent applications. Product names and markings noted herein may also be covered by one or more United States, international or foreign trademarks and trademark applications. Diodes does not convey any license under any of its intellectual property rights or the rights of any third parties (including third parties whose products and services may be described in this document or on Diodes’ website) under this document.
5. Diodes products are provided subject to Diodes’ Standard Terms and Conditions of Sale (<https://www.diodes.com/about/company/terms-and-conditions/terms-and-conditions-of-sales/>) or other applicable terms. This document does not alter or expand the applicable warranties provided by Diodes. Diodes does not warrant or accept any liability whatsoever in respect of any products purchased through unauthorized sales channel.
6. Diodes products and technology may not be used for or incorporated into any products or systems whose manufacture, use or sale is prohibited under any applicable laws and regulations. Should customers or users use Diodes products in contravention of any applicable laws or regulations, or for any unintended or unauthorized application, customers and users will (a) be solely responsible for any damages, losses or penalties arising in connection therewith or as a result thereof, and (b) indemnify and hold Diodes and its representatives and agents harmless against any and all claims, damages, expenses, and attorney fees arising out of, directly or indirectly, any claim relating to any noncompliance with the applicable laws and regulations, as well as any unintended or unauthorized application.
7. While efforts have been made to ensure the information contained in this document is accurate, complete and current, it may contain technical inaccuracies, omissions and typographical errors. Diodes does not warrant that information contained in this document is error-free and Diodes is under no obligation to update or otherwise correct this information. Notwithstanding the foregoing, Diodes reserves the right to make modifications, enhancements, improvements, corrections or other changes without further notice to this document and any product described herein. This document is written in English but may be translated into multiple languages for reference. Only the English version of this document is the final and determinative format released by Diodes.
8. Any unauthorized copying, modification, distribution, transmission, display or other use of this document (or any portion hereof) is prohibited. Diodes assumes no responsibility for any losses incurred by the customers or users or any third parties arising from any such unauthorized use.

Copyright © 2022 Diodes Incorporated

www.diodes.com