

General Description

The AL5819 is a 36V low-dropout linear LED driver offering excellent temperature stability and adjustable output current handling capability. The AL5819 simplifies the design of linear and isolated or non-isolated LED drivers by setting the LED current with standard value resistors. It is a simple and elegant solution to deliver constant current for a single LED string.

The AL5819 has an open-drain output that can swing up to 36V, enabling it to drive long LED chains. Its RSET pin is outside of the LED current path and regulated accuracy while minimizing the required overheads to regulate the LED current. This reduces its power dissipation when compared to traditional linear LED drivers.

The AL5819 is available in the SOT26 (Type SM) package.

Applications

- LED strips
- LED displays and channel letters
- Architectural and landscape lighting
- Retail lighting in fridges, freezer cases, and vending machines
- Signage and decorative LED lighting

Key Features

- Up to 36V Vin Open-Drain Output
- Support up to 100mA Output Current
- -40°C to +125°C Temperature Range
- 5kV ESD HBM for VIN Pin, 2kV ESD HBM for All Other Pins
- No External Capacitor Required for Normal Operation
- Support LED Dimming Through Power Supply Vin
- Support LED Dimming Through RSET Control
- Connect Devices in Parallel to Increase Output Current
- High LED Current Tolerance: $\pm 5\%$ @ 30mA
- Low Dropout Voltage on LED Pin: 250mV Max @ 60mA
- High Power Supply Rejection
- Low Temperature Drift
- Thermal Fold Back

AL5819EV1 Specifications

Parameter	Value
Input Voltage	5V _{DC} to 36V _{DC}
LED Current	30/50/100mA
Number of LEDs	1~11 pcs
XY Dimension	48mm x 43mm

EVB Physical Pictures



Figure 1: Top View



Figure 2: Bottom View

Connection Instructions

- Power Supply Input: 4.5~16V_{DC} (VIN, GND).
- Connect LED string between “HS LED+” and “HS LED-” for high-side connection.
- Connect LED string between “LS LED+” and “LS LED-” for low-side connection.
- For PWM dimming operation: supply a 0-3.3V 200Hz~500Hz signal between PWM & GND.

Quick Start Guide

1. By default, the LED current of the evaluation board is preset at 50mA per channel.
2. Ensure that the DC source is switched OFF or disconnected before soldering or connecting.
3. For LED high-side connection:
 - Connect the anode wire of the external LED string to **HS LED+**.
 - Connect the cathode wire of the external LED string to **HS LED-**.
 - J1 and J4 are open; J2 and J3 are shorted by Jumper (Default).
 - For PWM dimming operation, J1, J3, and J4 are open; J2 is shorted by Jumper.
4. For LED low-side connection:
 - Connect the anode wire of the external LED string to **LS LED+**.
 - Connect the cathode wire of the external LED string to **LS LED-**.
 - J1 and J2 are open; J3 and J4 are shorted by Jumper.
 - PWM dimming operation is **NOT** supported in low-side connection.
5. Connect two DC-line wires to the VIN and GND terminals on the evaluation board.
6. Ensure that the area around the board is clear and safe, and preferably that the board and LEDs are enclosed in a transparent safety cover.
7. Turn on the main switch. The LED string should light up.

Evaluation Board Schematic

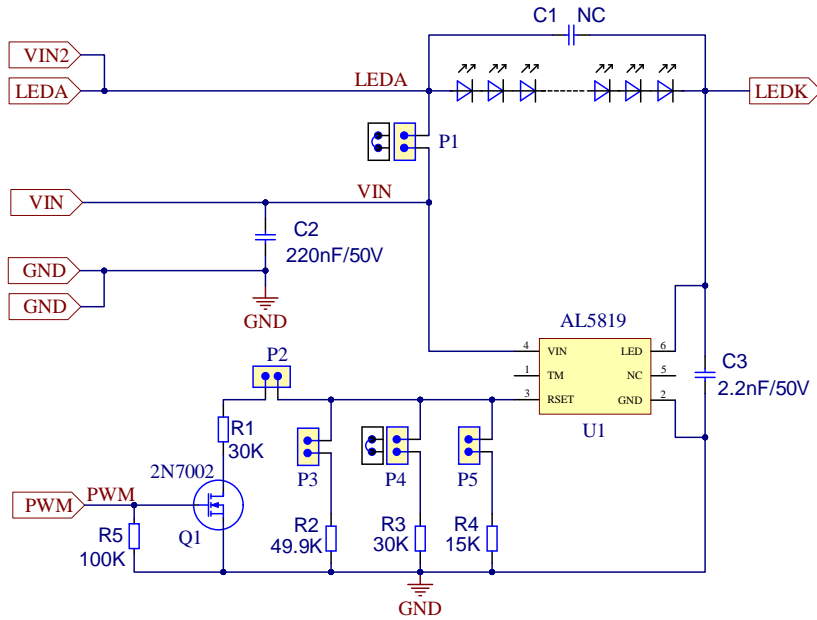


Figure 3: Evaluation Board Schematic

Evaluation Board Layout

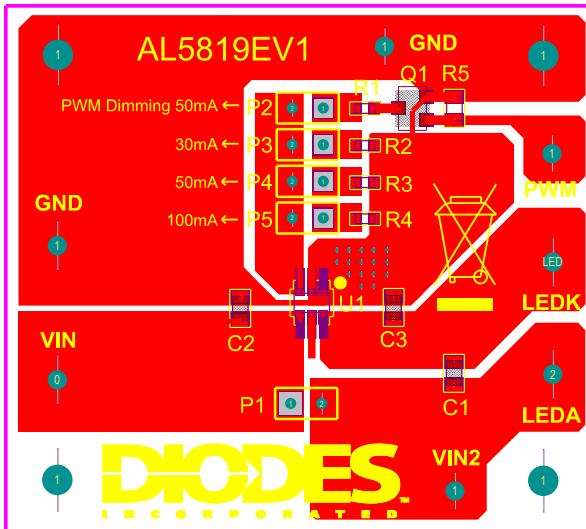


Figure 4: PCB Top Layer View

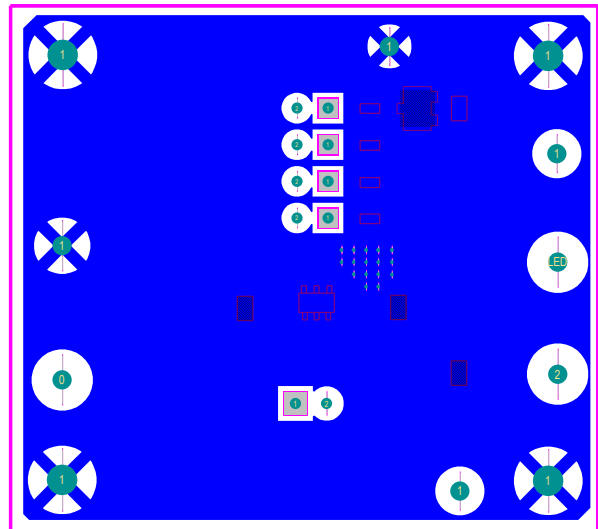
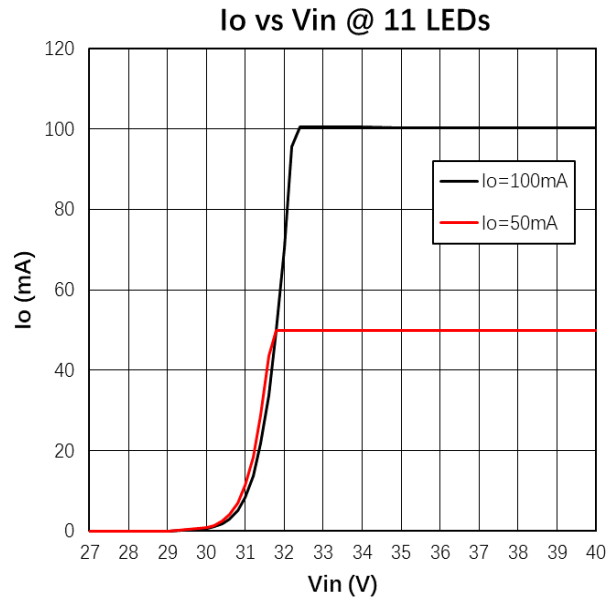
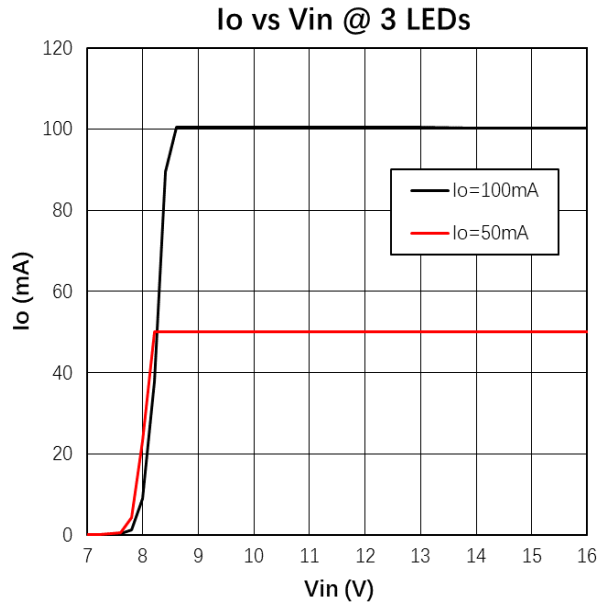


Figure 5: PCB Bottom Layer View

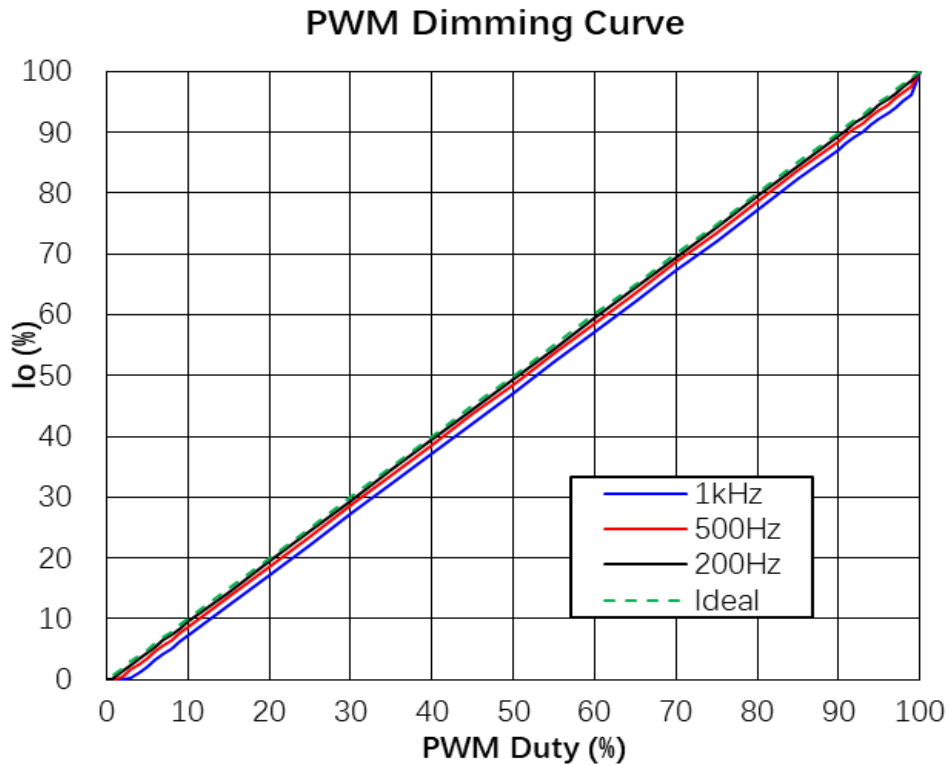
Bill of Materials

Location	Description	Package
R1,R3	30K ohm, 1%	0603
R2	49.9K ohm, 1%	0603
R4	15K ohm, 1%	0603
R5	100K ohm, 5%	0805
C2	MLCC, 220nF, 50V, X7R, 0805,CL21B224KBFNNNE,SAMSUNG(三星)	0805
C3	MLCC, 2.2nF, 50V, X7R, 0805,CC0805KRX7R9BB222,YAGEO(国巨)	0805
U1	IC, AL5819, DIODES	SOT26
Q1	MOSFET, 2N7002-7-F, 60V, DIODES	SOT-23
P1, P2, P3, P4, P5	Connector, 2pin, pitch=2mm	DIP
PWM, VIN2	Connector, Orange color	DIP
GND	Connector, Black color	DIP
LEDK	Connector, White color	DIP
LEDA	Connector, Red color	DIP
on P1, P4	2-PIN Jumper, pitch=2mm	DIP

System Performance



PWM Dimming Curve
Test @VIN=12V, LED voltage=5.3V



Waveforms

Turn ON:

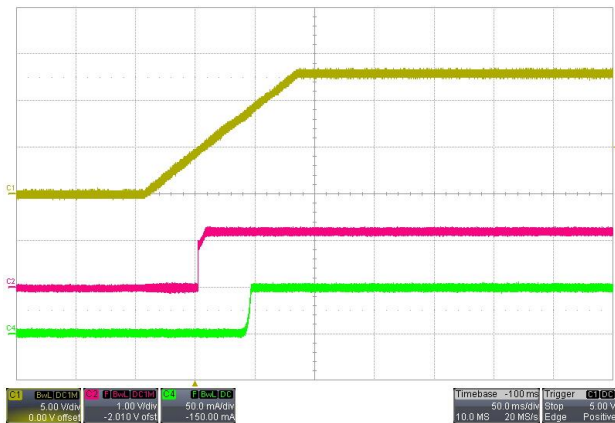


Figure 6 High-Side Startup

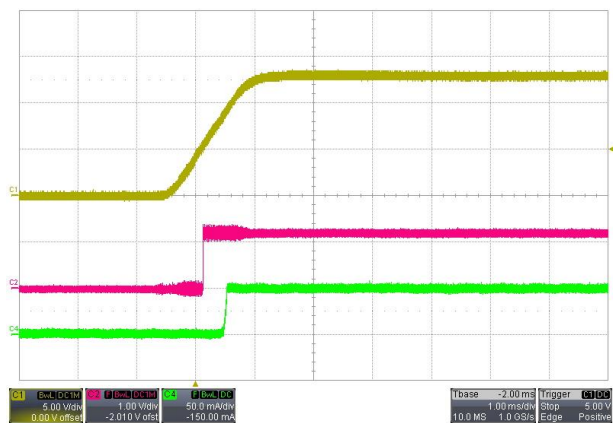


Figure 7 Low-Side Startup

Ripple Current:

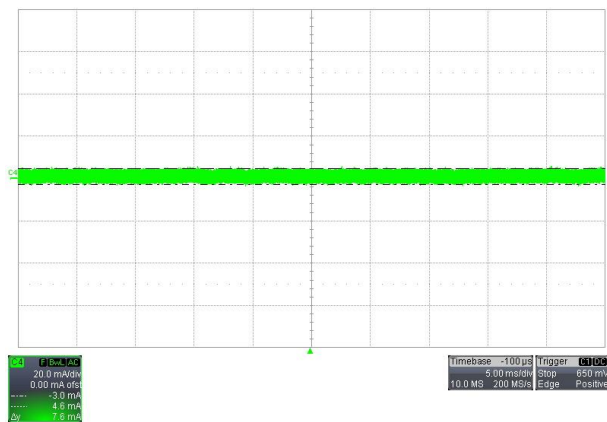


Figure 8 Ripple Current @ Vin=9V

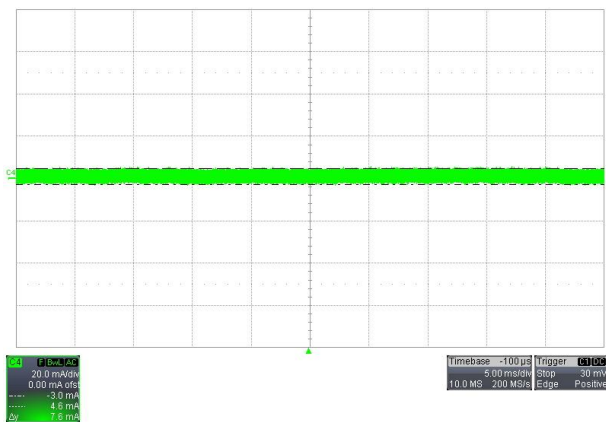


Figure 9 Ripple Current @ Vin=16V

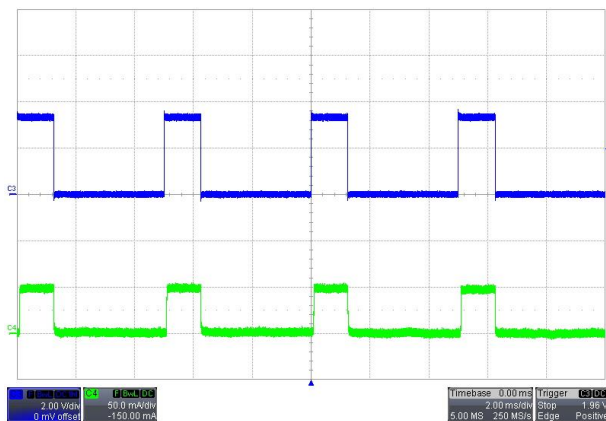


Figure 10 PWM Duty=25%

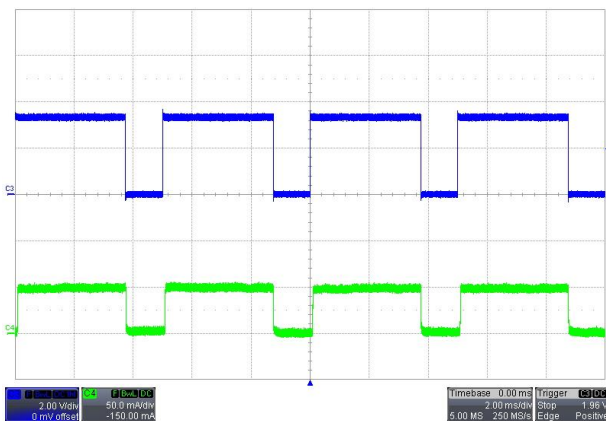
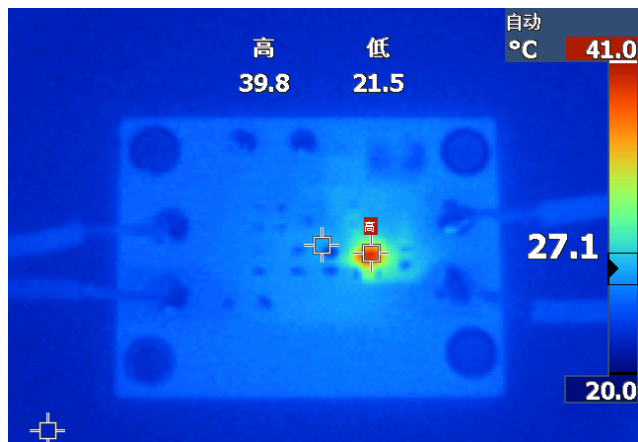
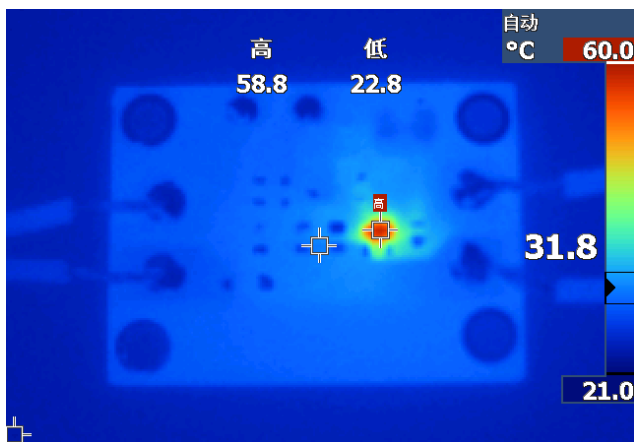


Figure 11 PWM Duty=75%

Thermal Test

IC Tc = 58.8°C @ ambient = 22.8°C @VIN-VLED=4V, Io=100mA, temperature rise is about 36°C.

IC Tc = 39.8°C @ ambient = 21.5°C @VIN-VLED=2V, Io=100mA, temperature rise is about 18.3°C.



IMPORTANT NOTICE

1. DIODES INCORPORATED (Diodes) AND ITS SUBSIDIARIES MAKE NO WARRANTY OF ANY KIND, EXPRESS OR IMPLIED, WITH REGARDS TO ANY INFORMATION CONTAINED IN THIS DOCUMENT, INCLUDING, BUT NOT LIMITED TO, THE IMPLIED WARRANTIES OF MERCHANTABILITY, FITNESS FOR A PARTICULAR PURPOSE OR NON-INFRINGEMENT OF THIRD PARTY INTELLECTUAL PROPERTY RIGHTS (AND THEIR EQUIVALENTS UNDER THE LAWS OF ANY JURISDICTION).
2. The Information contained herein is for informational purpose only and is provided only to illustrate the operation of Diodes' products described herein and application examples. Diodes does not assume any liability arising out of the application or use of this document or any product described herein. This document is intended for skilled and technically trained engineering customers and users who design with Diodes' products. Diodes' products may be used to facilitate safety-related applications; however, in all instances customers and users are responsible for (a) selecting the appropriate Diodes products for their applications, (b) evaluating the suitability of Diodes' products for their intended applications, (c) ensuring their applications, which incorporate Diodes' products, comply the applicable legal and regulatory requirements as well as safety and functional-safety related standards, and (d) ensuring they design with appropriate safeguards (including testing, validation, quality control techniques, redundancy, malfunction prevention, and appropriate treatment for aging degradation) to minimize the risks associated with their applications.
3. Diodes assumes no liability for any application-related information, support, assistance or feedback that may be provided by Diodes from time to time. Any customer or user of this document or products described herein will assume all risks and liabilities associated with such use, and will hold Diodes and all companies whose products are represented herein or on Diodes' websites, harmless against all damages and liabilities.
4. Products described herein may be covered by one or more United States, international or foreign patents and pending patent applications. Product names and markings noted herein may also be covered by one or more United States, international or foreign trademarks and trademark applications. Diodes does not convey any license under any of its intellectual property rights or the rights of any third parties (including third parties whose products and services may be described in this document or on Diodes' website) under this document.
5. Diodes' products are provided subject to Diodes' Standard Terms and Conditions of Sale (<https://www.diodes.com/about/company/terms-and-conditions/terms-and-conditions-of-sales/>) or other applicable terms. This document does not alter or expand the applicable warranties provided by Diodes. Diodes does not warrant or accept any liability whatsoever in respect of any products purchased through unauthorized sales channel.
6. Diodes' products and technology may not be used for or incorporated into any products or systems whose manufacture, use or sale is prohibited under any applicable laws and regulations. Should customers or users use Diodes' products in contravention of any applicable laws or regulations, or for any unintended or unauthorized application, customers and users will (a) be solely responsible for any damages, losses or penalties arising in connection therewith or as a result thereof, and (b) indemnify and hold Diodes and its representatives and agents harmless against any and all claims, damages, expenses, and attorney fees arising out of, directly or indirectly, any claim relating to any noncompliance with the applicable laws and regulations, as well as any unintended or unauthorized application.
7. While efforts have been made to ensure the information contained in this document is accurate, complete and current, it may contain technical inaccuracies, omissions and typographical errors. Diodes does not warrant that information contained in this document is error-free and Diodes is under no obligation to update or otherwise correct this information. Notwithstanding the foregoing, Diodes reserves the right to make modifications, enhancements, improvements, corrections or other changes without further notice to this document and any product described herein. This document is written in English but may be translated into multiple languages for reference. Only the English version of this document is the final and determinative format released by Diodes.
8. Any unauthorized copying, modification, distribution, transmission, display or other use of this document (or any portion hereof) is prohibited. Diodes assumes no responsibility for any losses incurred by the customers or users or any third parties arising from any such unauthorized use.
9. This Notice may be periodically updated with the most recent version available at <https://www.diodes.com/about/company/terms-and-conditions/important-notice>

The Diodes logo is a registered trademark of Diodes Incorporated in the United States and other countries.
All other trademarks are the property of their respective owners
© 2024 Diodes Incorporated. All Rights Reserved.

www.diodes.com