

General Description

The AL1783 is a three-channel linear LED driver with PWM dimming control designed to target for three-channel smart connected lighting applications. Each channel can drive up to 250mA with a total driving current up to 750mA. Each channel current of the AL1783 can be independently set by the corresponding reference resistor connected to the REFX pin.

The AL1783 regulates LED current from each channel, accurate to $\pm 4\%$, with excellent dimming performance. The AL1783 enters standby mode to save power if no PWM signal is detected.

The AL1783 monitors the temperature and reduces the LED current if the chip temperature exceeds the threshold temperature. And the input under voltage lock-out (UVLO), input over voltage protection, LED string open/short protection, and over temperature protection (OTP) are designed to improve system robustness. The FAULTB pin is pulled low if the protections happen.

The AL1783 is available in TSSOP-16EP package.

Applications

- Architecture Lighting
- Industrial Lighting
- Wall Washer
- Ceiling Light
- Panel Light

Key Features

- Wide Input Voltage Range from 6.5V to 60V
- PWM Dimming Control for Each Channel
- Output Current Adjustable by an External Reference Resistor for Each Channel
- Automatic Enter and Exit Standby Mode without Enable Pin
- PWM Dimming Capable
- Internal Protections: Input Under Voltage Lock-out (UVLO), Input Over Voltage Protection, LED String Open/Short Protection
- Over Temperature Protection (OTP): Thermal Fold-back, Thermal Shut-down and Automatically Thermal Recovery
- Fault Reporting: UVLO, OTP, LED Open, and LED Short

AL1783EV1 Specifications

| Parameter | Value |
|----------------|------------------------------|
| Input Voltage | 6.5~60Vdc |
| LED Current | 250mA/Channel, 3 Channels |
| Number of LEDs | 1~17pcs |
| XYZ Dimension | 32mm x 32mm x 12mm |

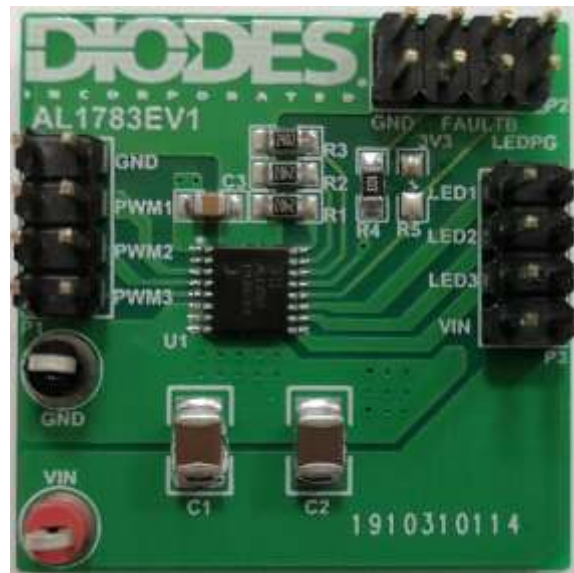


Figure 1: Top View

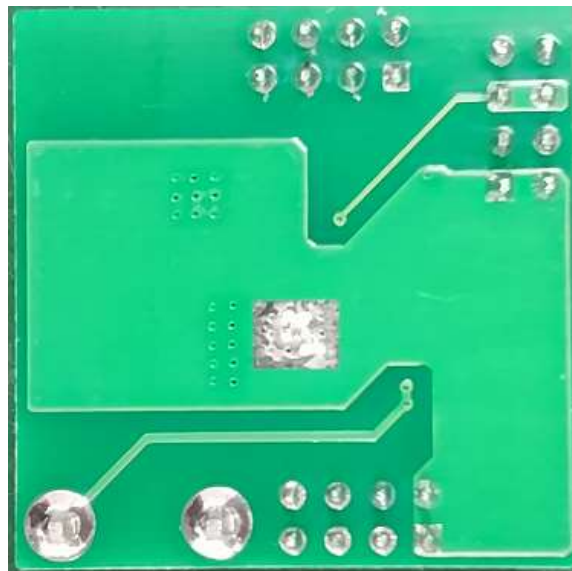


Figure 2: Bottom View

Connection Instructions

Power Supply Input: 6.5~60VDC (VIN, GND)

External LED connection: VIN pin of connector P3 is for LED string anodes, and LED1~LED3 of connector P3 are for LED string cathodes

PWM dimming signal input: PWM1~PWM3 of connector P1 are for PWM signal inputs for LED strings corresponding to LED1~LED3

Evaluation Board Schematic

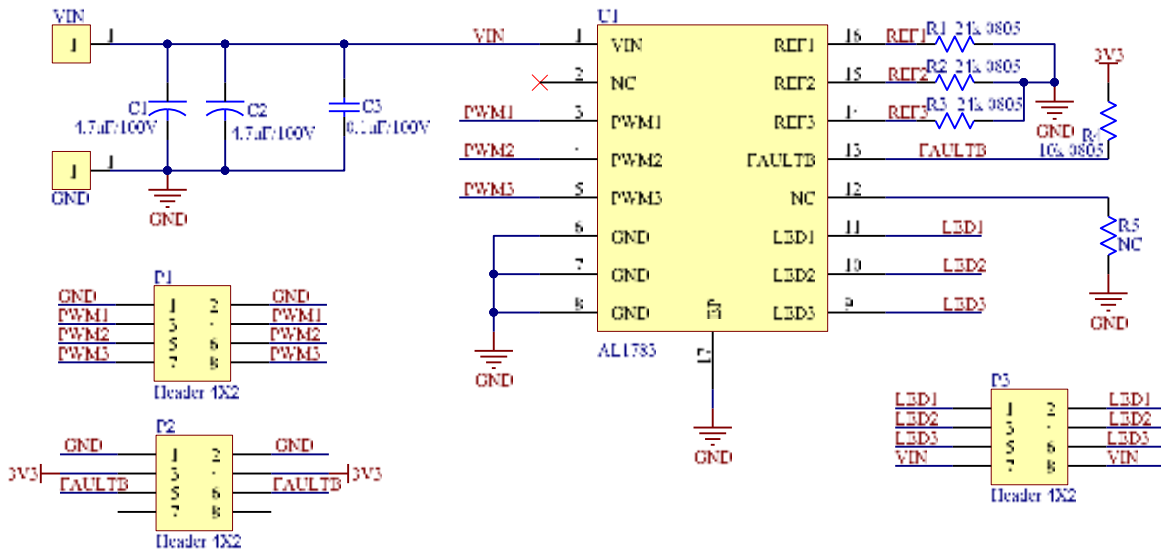


Figure 4: Evaluation Board Schematic

Evaluation Board Layout

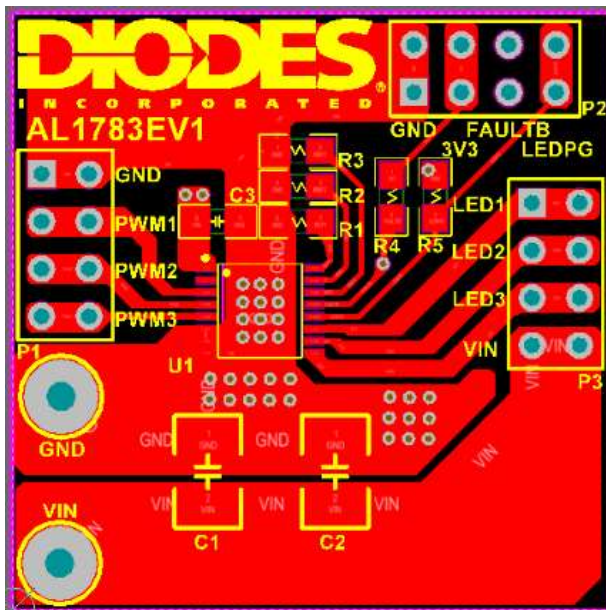


Figure 5: PCB Board Layout Top View

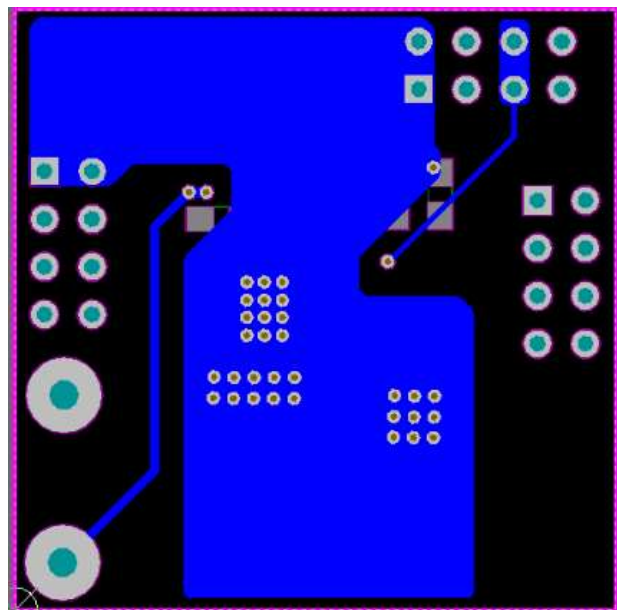


Figure 6: PCB Board Layout Bottom View

Quick Start Guide

1. Ensure that the DC source for VIN is switched OFF or disconnected, and the PWM signal generator is also switched OFF or not connected.
2. Connect the anode wires of external LED strings to VIN pin of connector P3 of the evaluation board.
3. Connect the cathode wires of external LED strings to LED1~LED3 of connector P3 of the evaluation board.
4. Connect two DC line wires to the VIN and GND terminals on the evaluation board.
5. Connect the PWM signals to the PWM1~PWM3 of connector P1 and set the frequency, amplitude and duty cycle of the PWM signal.
6. Turn on the main switch and the PWM signal. LED strings should light up.

Bill of Material

| Item | Description | Package |
|-----------|-------------------------------------|------------|
| U1 | AL1783T16E-13, Diodes Inc. | TSSOP-16EP |
| C1, C2 | Ceramic Cap,4.7uF/100V, X7R | 1210 |
| C3 | Ceramic Cap,0.1uF/100V, X7R, murata | 0805 |
| R1,R2, R3 | SMD Resistor, 24K, 1%, 1/8W | 0805 |
| R4 | SMD Resistor, 10K, 5%, 1/8W | 0805 |
| R5 | NC | 0805 |

LED Current Setting

The AL1783 is designed to have individual channel current set by its corresponding current setting RSET resistor. The LED channel current level is expressed as below:

$$I_{LED1} = 4000 \times \frac{VREF}{RSET1}$$

$$I_{LED2} = 4000 \times \frac{VREF}{RSET2}$$

$$I_{LED3} = 4000 \times \frac{VREF}{RSET3}$$

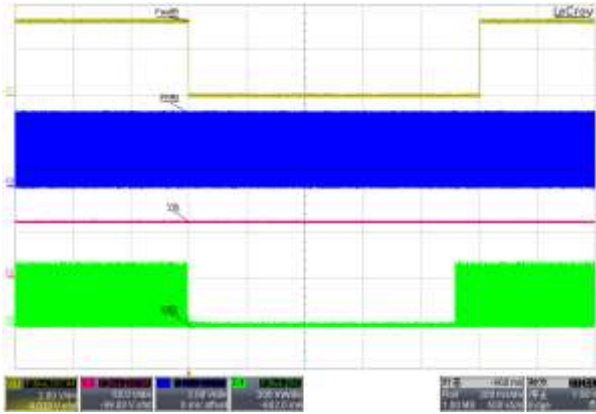
Where VREF=1.5V nominally for all devices channels

For example, when an RSET of 24KΩ is used, each channel of AL1783 provides the same output current of 250mA.

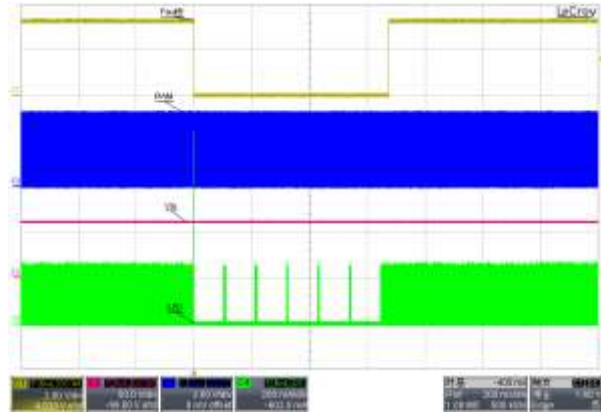
Functional Performance

Fault Report

| | | | |
|--------|-----|------|-------------------|
| FaultB | Vin | PWM1 | I _{LED1} |
|--------|-----|------|-------------------|

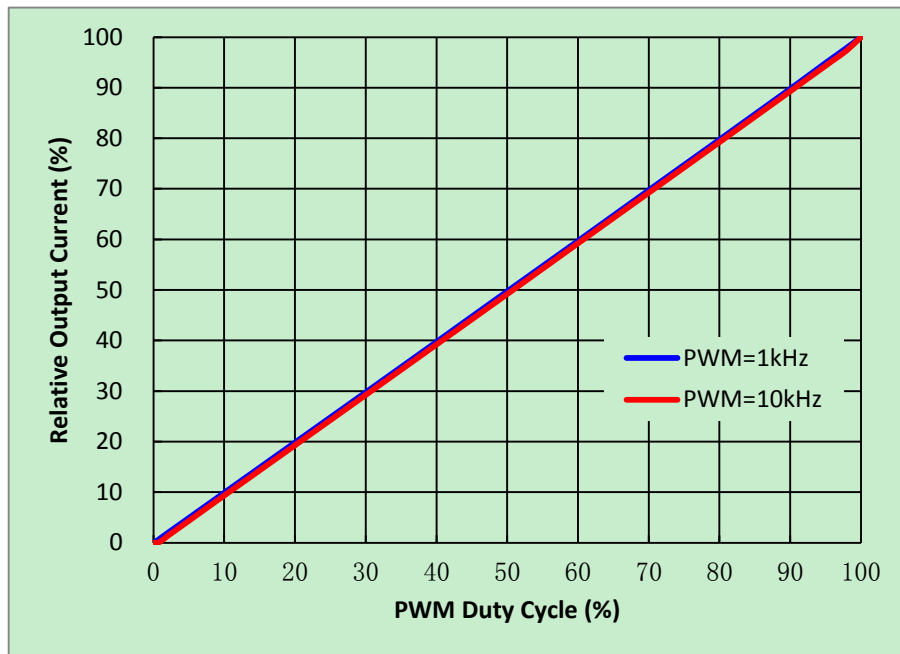


LED open



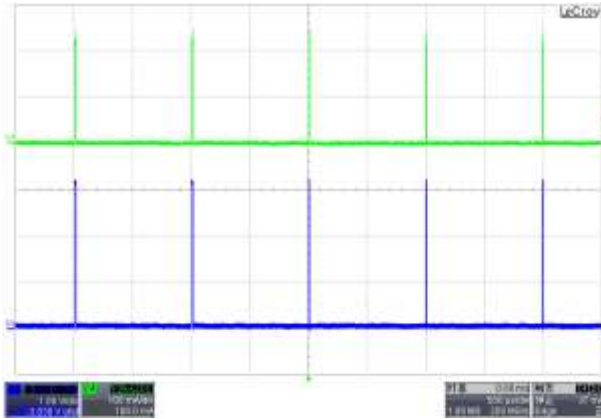
LED Short

Dimming curve

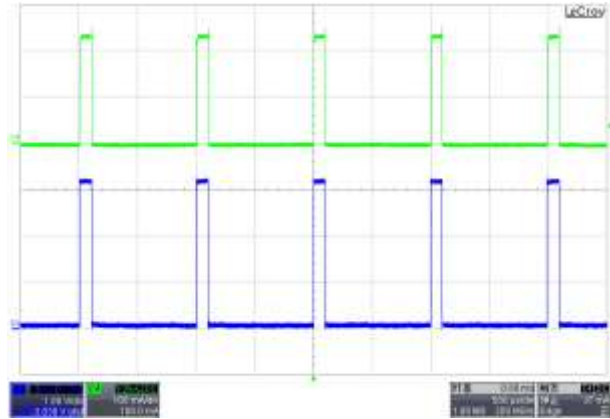


Dimming Waveform

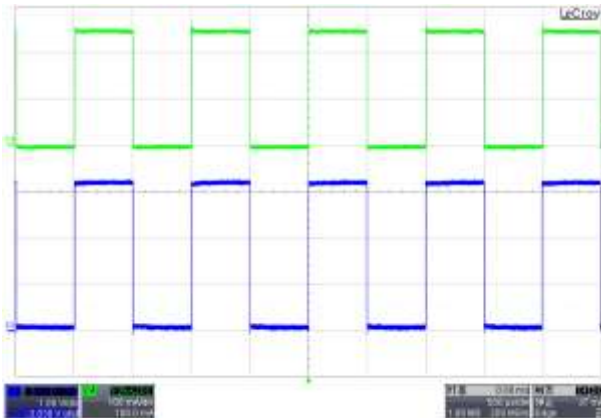
| | |
|-------------|--------------|
| PWM1 | ILED1 |
|-------------|--------------|



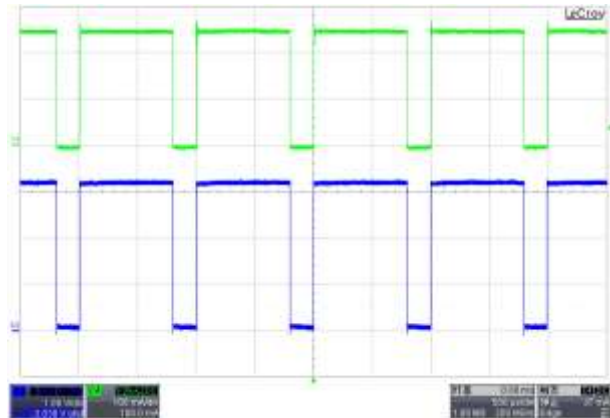
3channels PWM duty=1% 1kHz



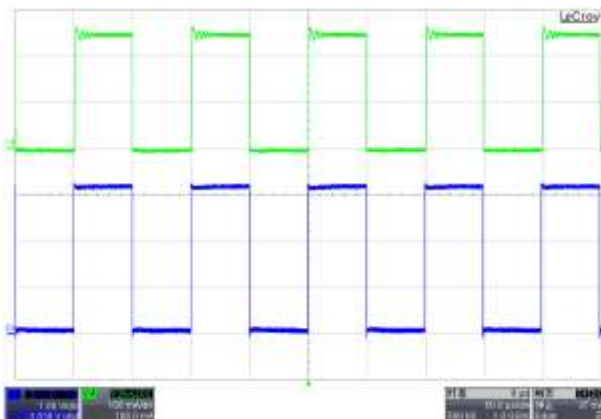
3channels PWM duty=10% 1kHz



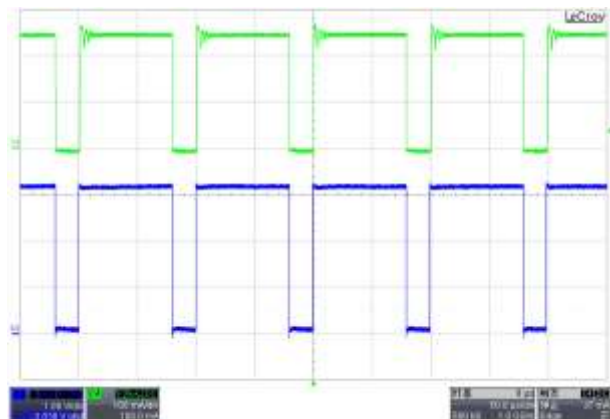
3channels PWM duty=50% 1kHz



3channels PWM duty=80% 1kHz



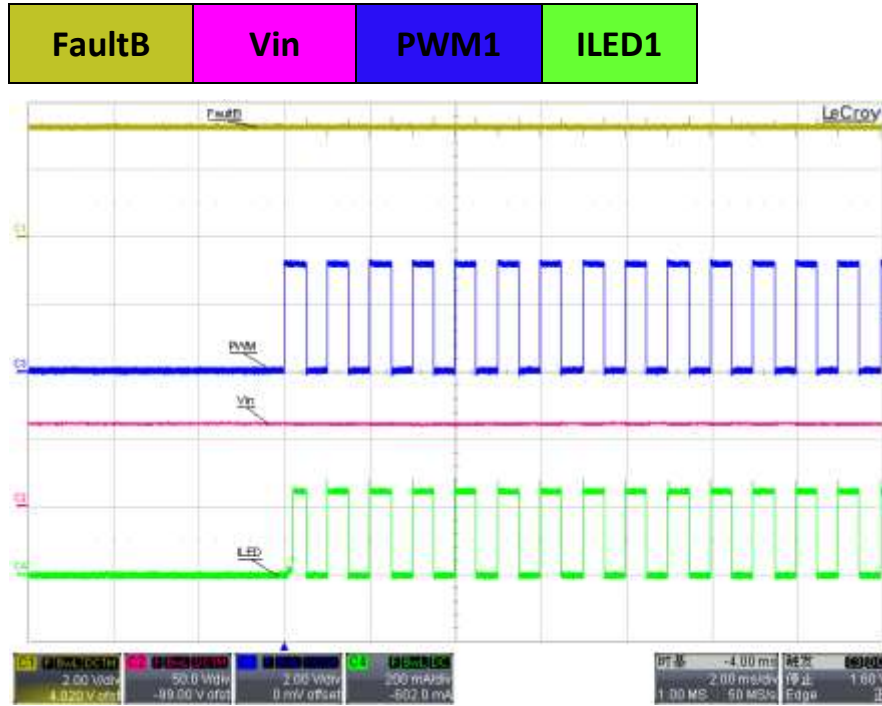
3channels PWM duty=50% 10kHz



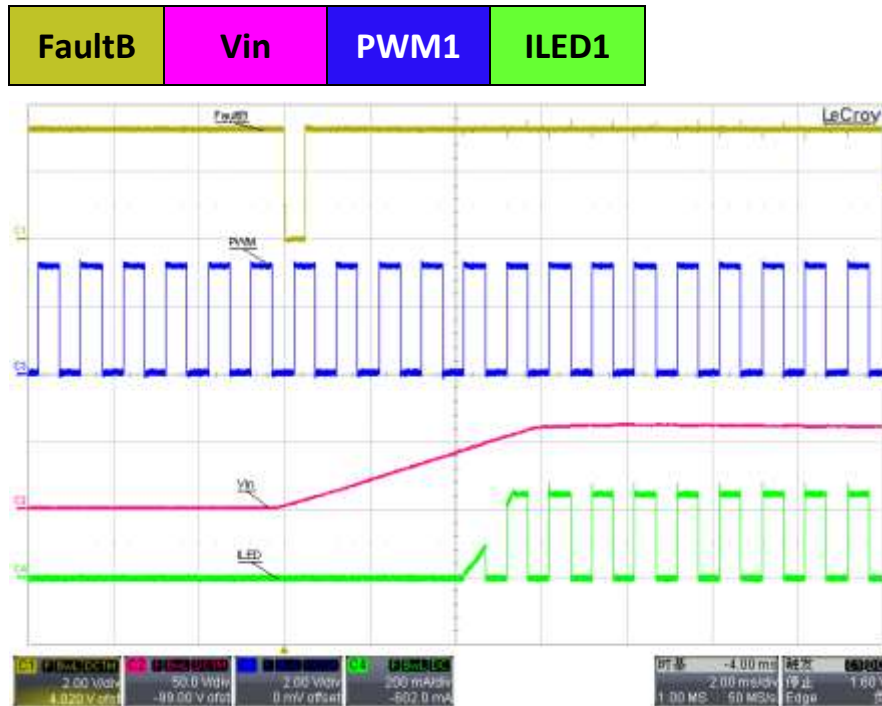
3channels PWM duty=80% 10kHz

Startup sequence

PWM Startup (VIN powered first)



VIN Startup (PWM powered first)



IMPORTANT NOTICE

DIODES INCORPORATED MAKES NO WARRANTY OF ANY KIND, EXPRESS OR IMPLIED, WITH REGARDS TO THIS DOCUMENT, INCLUDING, BUT NOT LIMITED TO, THE IMPLIED WARRANTIES OF MERCHANTABILITY AND FITNESS FOR A PARTICULAR PURPOSE (AND THEIR EQUIVALENTS UNDER THE LAWS OF ANY JURISDICTION).

Diodes Incorporated and its subsidiaries reserve the right to make modifications, enhancements, improvements, corrections or other changes without further notice to this document and any product described herein. Diodes Incorporated does not assume any liability arising out of the application or use of this document or any product described herein; neither does Diodes Incorporated convey any license under its patent or trademark rights, nor the rights of others. Any Customer or user of this document or products described herein in such applications shall assume all risks of such use and will agree to hold Diodes Incorporated and all the companies whose products are represented on Diodes Incorporated website, harmless against all damages.

Diodes Incorporated does not warrant or accept any liability whatsoever in respect of any products purchased through unauthorized sales channel.

Should Customers purchase or use Diodes Incorporated products for any unintended or unauthorized application, Customers shall indemnify and hold Diodes Incorporated and its representatives harmless against all claims, damages, expenses, and attorney fees arising out of, directly or indirectly, any claim of personal injury or death associated with such unintended or unauthorized application.

Products described herein may be covered by one or more United States, international or foreign patents pending. Product names and markings noted herein may also be covered by one or more United States, international or foreign trademarks.

This document is written in English but may be translated into multiple languages for reference. Only the English version of this document is the final and determinative format released by Diodes Incorporated.

LIFE SUPPORT

Diodes Incorporated products are specifically not authorized for use as critical components in life support devices or systems without the express written approval of the Chief Executive Officer of Diodes Incorporated. As used herein:

A. Life support devices or systems are devices or systems which:

1. are intended to implant into the body, or
2. support or sustain life and whose failure to perform when properly used in accordance with instructions for use provided in the labeling can be reasonably expected to result in significant injury to the user.

B. A critical component is any component in a life support device or system whose failure to perform can be reasonably expected to cause the failure of the life support device or to affect its safety or effectiveness.

Customers represent that they have all necessary expertise in the safety and regulatory ramifications of their life support devices or systems, and acknowledge and agree that they are solely responsible for all legal, regulatory and safety-related requirements concerning their products and any use of Diodes Incorporated products in such safety-critical, life support devices or systems, notwithstanding any devices- or systems-related information or support that may be provided by Diodes Incorporated. Further, Customers must fully indemnify Diodes Incorporated and its representatives against any damages arising out of the use of Diodes Incorporated products in such safety-critical, life support devices or systems.

Copyright © 2020, Diodes Incorporated

www.diodes.com