

### General Description

This demonstration board utilizes AL17050 to build a cost effective solution for high voltage Buck converter applications.

AL17050 integrates a 500V MOSFET and can works with a single winding inductor and very few external components to provide accurate constant voltage output and good dynamic performance.

This user guide contains rich information for the users. A bill of materials is included that describes the parts used on this board. A schematic and PCB layout is also included along with measured system performance characteristics and test waveforms. These materials can be used as a reference design for your products to improve your product's time to market.

### Key Features

1. Universal 85 to 265 VAC Input Range
2. Constant Voltage (CV) Control
3. Internal MOSFET up to 500V
4. Low Operation Current: 100 $\mu$ A (Static)
5. Under Voltage Lock Out (UVLO)
6. Output Short Protection
7. Over Load Protection
8. Over Temperature Protection (OTP)

### Applications

- Home Appliance Applications
- IoT Applications
- Industrial Controls
- Standby Power

### Specifications

Parameter	Value
AC Input Voltage	85Vac ~ 265Vac
Output Power	0.2W
Output Current	60mA
Output Voltage	3.3V
Efficiency	>52 %
Dimension	32mm*15mm
RoHS Compliance	Yes

### Evaluation Board



Figure 1: Top View

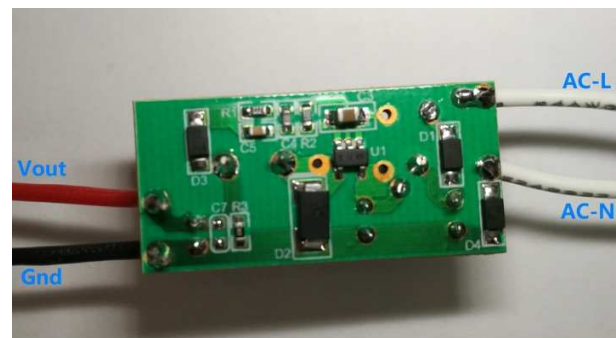
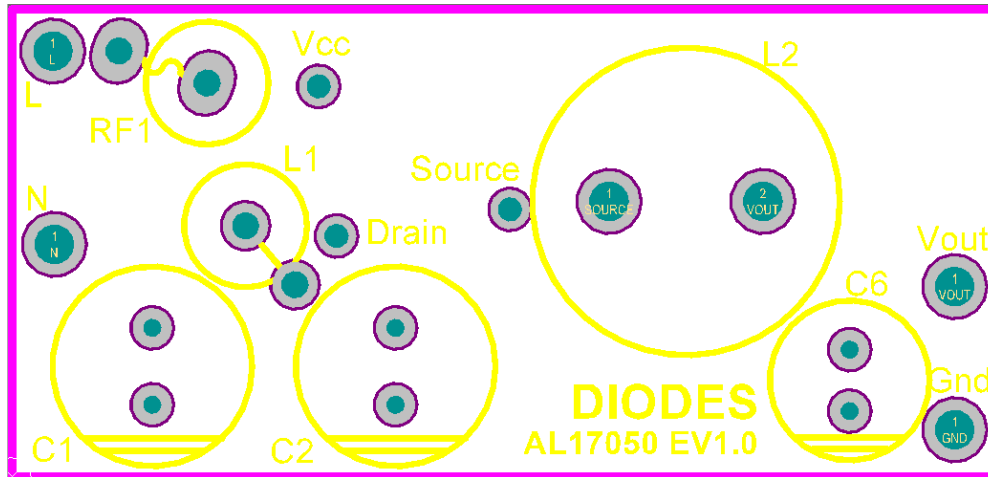


Figure 2: Bottom View

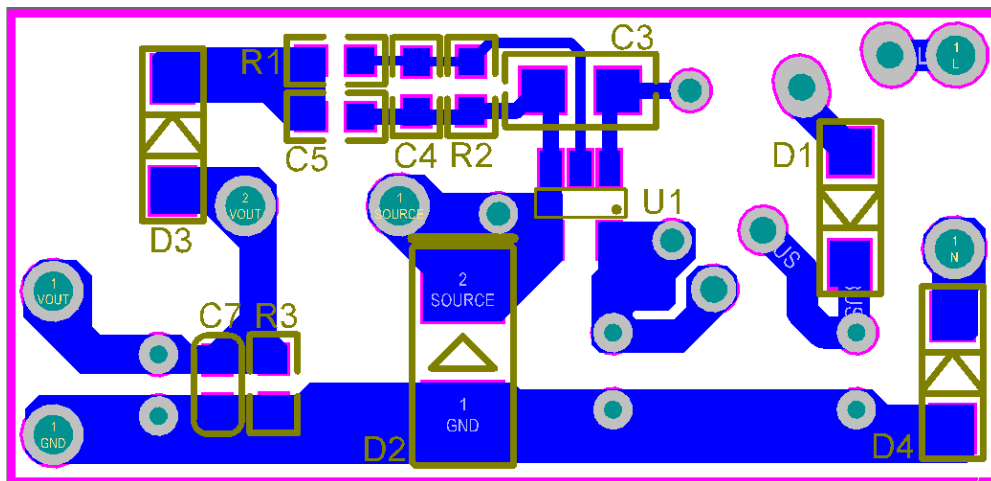
#### Connection Instructions:

AC Line Input: White L line  
 AC Neutral Input: White N line  
 Positive Output: Vout (Red)  
 Negative Output: Gnd (Black)

**Board Layout**



**Figure 3: PCB Layout Top View**



**Figure 4: PCB Layout Bottom View**

**Quick Start Guide**

1. Ensure that the AC source is switched OFF or disconnected.
2. Connect the AC line wires of power supply to “L” and “N” wires on the left side of the board.
3. Connect the red terminal of the electronic load to the “Vout” wire.
4. Connect the black terminal of the electronic load to the “Gnd” wire.
5. Turn on the main switch. The electronic load should show a 3.3V output.

### Schematic

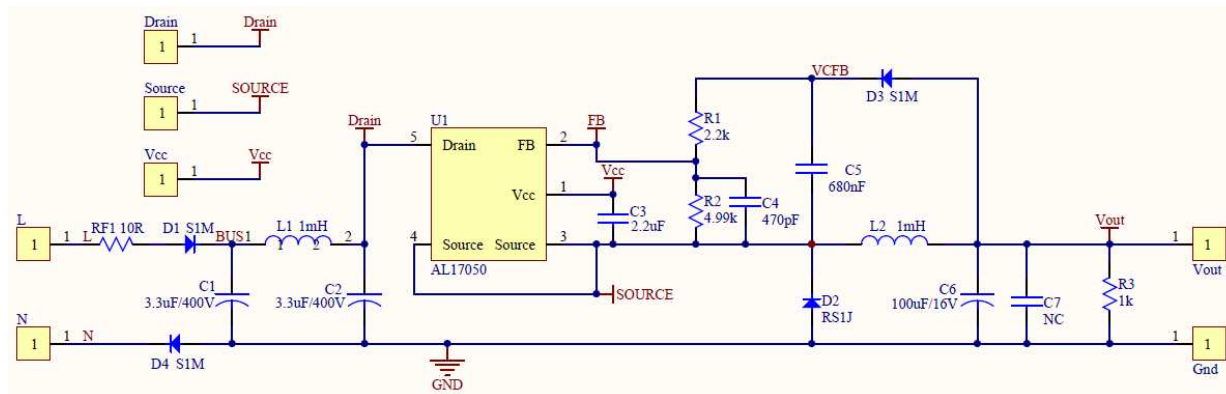


Figure 5: Schematic Circuit

### Bill of Material

Item	Quantity	Package	Description
RF1	1	DIP	10Ω, Fuse Resistor, 5%, 1W
D1,D3,D4	3	SOD123	S1MSWFQ, Diode,1000V,1A, Diodes Inc
D2	1	D-Flat	RS1J, Diode,600V,1A,trr=250ns, Diodes Inc
C1,C2	2	DIP	3.3uF, Electrolytic Capacitor,400V,6.3*9, AISHI
C3	1	0805	2.2uF, Ceramic Capacitor,25V,X5R,20%
C4	1	0603	470pF, Ceramic Capacitor,50V,X7R,5%
C5	1	0603	680nF, Ceramic Capacitor,16V,X7R,10%
C6	1	DIP	100uF, Electrolytic Capacitor,16V,5*11
L1	1	DIP	1mH, Inductor, Color-ring
L2	1	DIP	1mH, Inductor, Choke, 8*10
R1	1	0603	2.2kΩ, SMD Film Resistor, 1%
R2	1	0603	4.99kΩ, SMD Film Resistor, 1%
R3	1	0603	1kΩ, SMD Film Resistor, 1%
U1	1	SOT25	AL17050, IC, Diodes Inc

### System Performance

The AL17050 evaluation board has excellent system performance. With very low BOM cost, the system can achieve high efficiency, low load regulation rate, low ripple and good load transient performance.

#### System efficiency

Figure 6 shows the measured efficiency versus load. The system efficiency at 60mA current load could reach 58% with 120Vac input and 54% with 230Vac input.

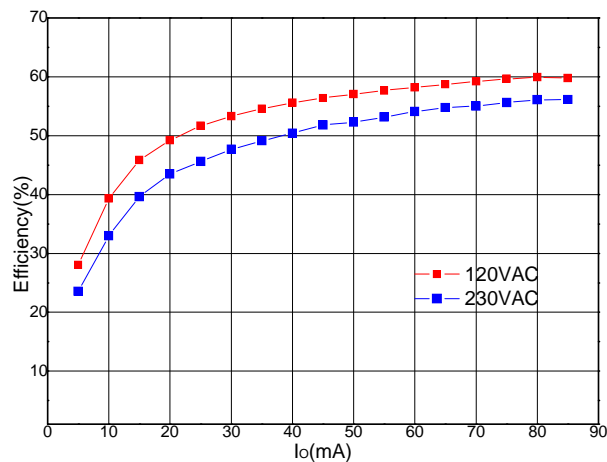


Figure 6: Efficiency vs load current

#### Load Regulation

The measured output voltage versus load is shown in Figure 7. The output voltage ranges from 3.45V to 3.3V, indicating the load regulation rate lower than 5%.

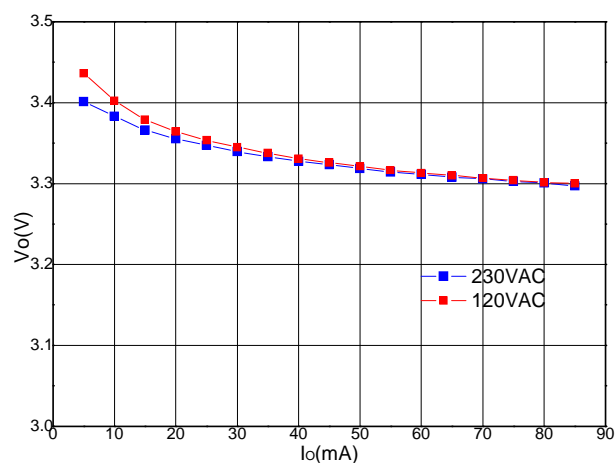
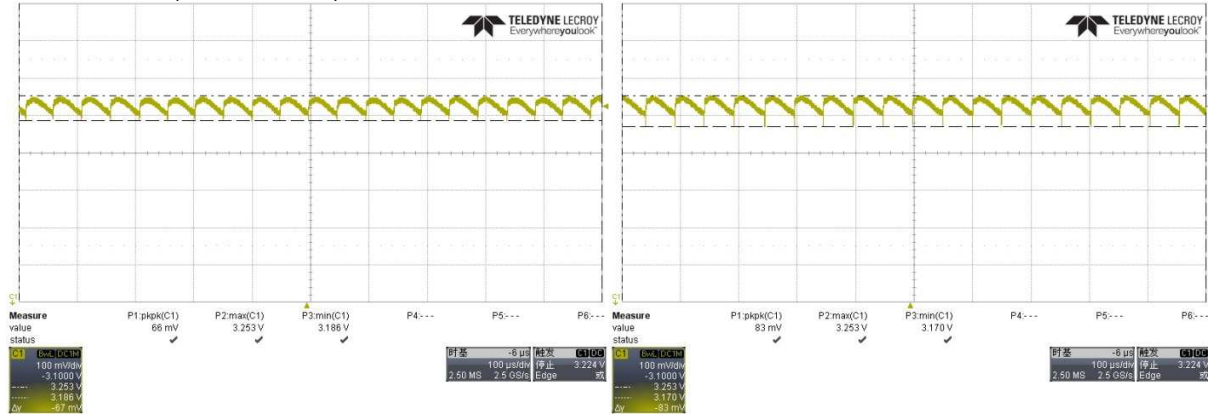


Figure 7: Output voltage vs load current

### Output Ripple

The output voltage ripple is measured at 60mA load at both 120Vac and 230Vac input. In Figure 8, channel 1 (Yellow color) shows the waveform of Vout.



**Figure 8: Output voltage ripple with 120Vac (Left) and 230Vac (Right)**

The output voltage ripple peak to peak value is 66mV for 120Vac input and 83mV for 230Vac.

### Load Transient Response

The load transient response is tested with the load repeatedly switching from 0mA to 60mA in 15Hz frequency. The load switching slew rate is 1A/us. In Figure 9, channel 2 (Red color) shows the waveform of Vout and channel 4 (Green color) shows Iout.



**Figure 9: Load transient waveform with 120Vac (Left) and 230Vac (Right)**

With 120Vac input, the overshoot and undershoot caused by the load transient is respectively 13mV and 51mV. With 230Vac input, the maximum overshoot and undershoot caused by the load transition are 43mV and 150mV, respectively. Thus, the minimum output voltage in worst case is 3.15V.

### IMPORTANT NOTICE

DIODES INCORPORATED MAKES NO WARRANTY OF ANY KIND, EXPRESS OR IMPLIED, WITH REGARDS TO THIS DOCUMENT, INCLUDING, BUT NOT LIMITED TO, THE IMPLIED WARRANTIES OF MERCHANTABILITY AND FITNESS FOR A PARTICULAR PURPOSE (AND THEIR EQUIVALENTS UNDER THE LAWS OF ANY JURISDICTION).

Diodes Incorporated and its subsidiaries reserve the right to make modifications, enhancements, improvements, corrections or other changes without further notice to this document and any product described herein. Diodes Incorporated does not assume any liability arising out of the application or use of this document or any product described herein; neither does Diodes Incorporated convey any license under its patent or trademark rights, nor the rights of others. Any Customer or user of this document or products described herein in such applications shall assume all risks of such use and will agree to hold Diodes Incorporated and all the companies whose products are represented on Diodes Incorporated website, harmless against all damages.

Diodes Incorporated does not warrant or accept any liability whatsoever in respect of any products purchased through unauthorized sales channel.

Should Customers purchase or use Diodes Incorporated products for any unintended or unauthorized application, Customers shall indemnify and hold Diodes Incorporated and its representatives harmless against all claims, damages, expenses, and attorney fees arising out of, directly or indirectly, any claim of personal injury or death associated with such unintended or unauthorized application.

Products described herein may be covered by one or more United States, international or foreign patents pending. Product names and markings noted herein may also be covered by one or more United States, international or foreign trademarks.

### LIFE SUPPORT

Diodes Incorporated products are specifically not authorized for use as critical components in life support devices or systems without the express written approval of the Chief Executive Officer of Diodes Incorporated. As used herein:

A. Life support devices or systems are devices or systems which:

1. are intended to implant into the body, or

2. support or sustain life and whose failure to perform when properly used in accordance with instructions for use provided in the labeling can be reasonably expected to result in significant injury to the user.

B. A critical component is any component in a life support device or system whose failure to perform can be reasonably expected to cause the failure of the life support device or to affect its safety or effectiveness.

Customers represent that they have all necessary expertise in the safety and regulatory ramifications of their life support devices or systems, and acknowledge and agree that they are solely responsible for all legal, regulatory and safety-related requirements concerning their products and any use of Diodes Incorporated products in such safety-critical, life support devices or systems, notwithstanding any devices- or systems-related information or support that may be provided by Diodes Incorporated. Further, Customers must fully indemnify Diodes Incorporated and its representatives against any damages arising out of the use of Diodes Incorporated products in such safety-critical, life support devices or systems.

Copyright © 2018, Diodes Incorporated

[www.diodes.com](http://www.diodes.com)