

General Description

This demonstration board utilizes the AL1697 Buck-boost LED driver-converter with single winding inductor providing a cost effective triac dimmable solution for offline high brightness LED applications. This user-friendly evaluation board provides users with quick connection to their different types of LEDs string. The demonstration board can be modified easily to adjust the LED output current and the number of series connected LEDs that are driven.

A BOM, schematic and layout are included that describes the parts used on this demonstration board, along with measured performance characteristics. These materials can be used as a reference design.

Key Features

- Triac Dimmable
- Active PFC with power factor >0.91
- High efficiency >85%
- Single winding
- Low THD
- Good dimmer compatibility
- Low BOM cost

Applications

- Retrofit Bulb, Par Lamps

Specifications

Parameter	Value
AC Input Voltage	198~264V
Output Power	8.1W
LED Current	100mA
LED Voltage	81V
Power Factor	>0.91
Efficiency	85%
XYZ Dimension	66.5 x 23.6 x 18mm
ROHS Compliance	Yes

Evaluation Board



Figure 1: Top View

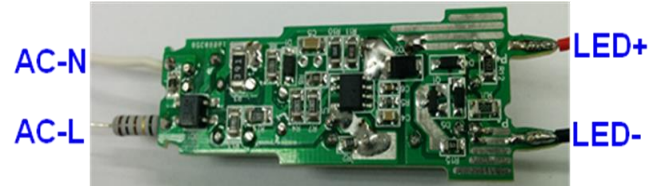


Figure 2: Bottom View

Connection Instructions:

AC-L Input: Fuse resistor-Hot

AC- Input: White-Neutral

DC LED+ Output: LED+ (Red)

DC LED- Output: LED- (Black)

Board Layouts

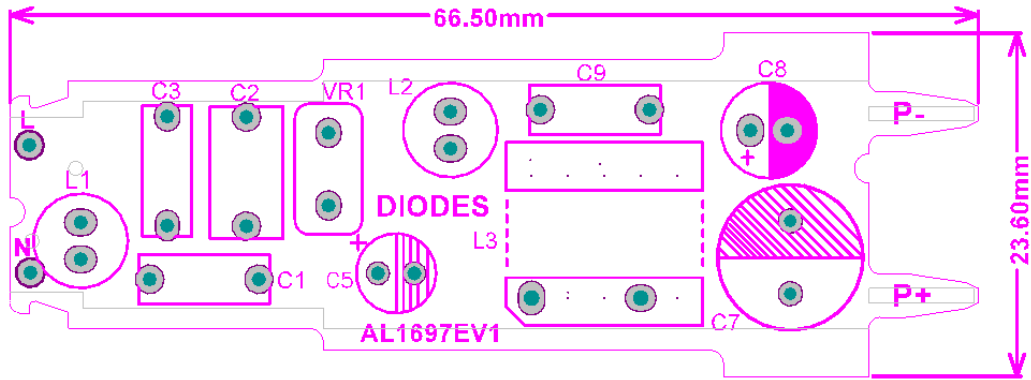


Figure 3: PCB Layout Top View

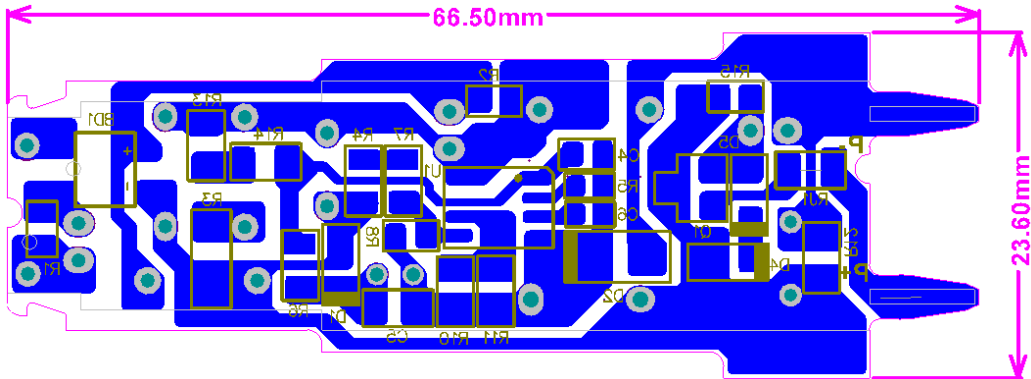


Figure 4: PCB Layout Bottom View

Quick Start Guide

1. Preset the isolated AC source to 230VAC.
2. Ensure that the AC source is switched OFF or disconnected.
3. Connect the anode wire of the LED string to the LED+ terminal of the evaluation board.
4. Connect the cathode wire of the LED string to the LED- terminal of the evaluation board.
5. Connect two AC line wires to the AC-L and AC-N terminals on the evaluation board.
6. Ensure that the area around the board is clear and safe, and preferably that the board and LEDs are enclosed in a transparent safety cover.
7. Turn on the main switch. LED string should light up with LED.
DO NOT TOUCH THE BOARD, LEDs OR BARE WIRING.

Caution: The AL1697 is a non-isolated design. All terminals carry high voltage during operation!

Schematic

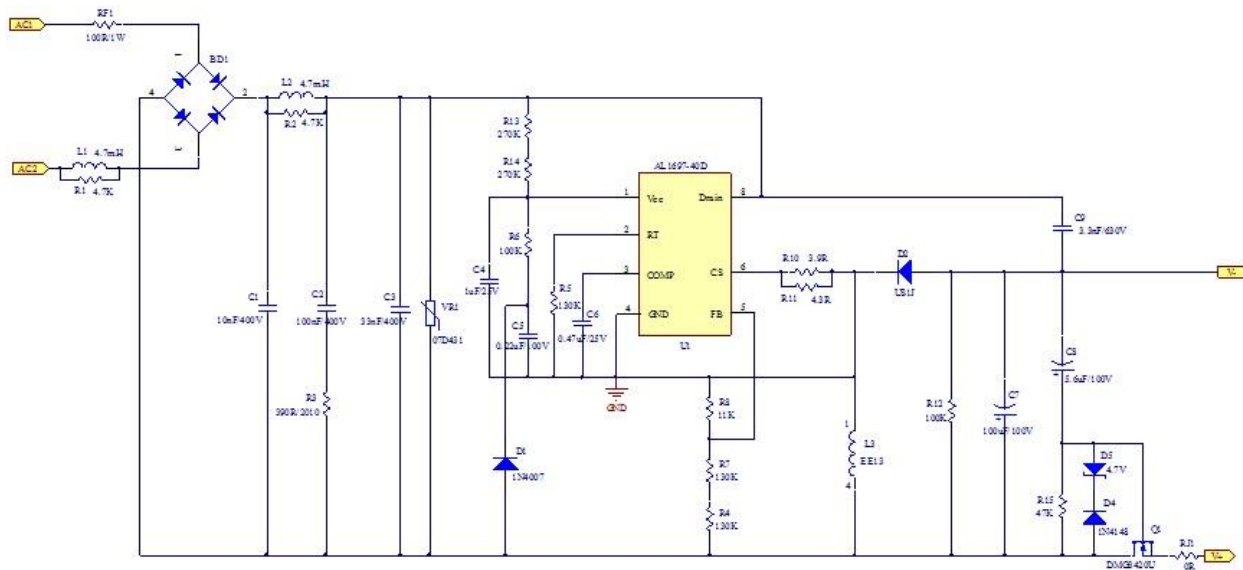


Figure 5: Schematic Circuit

Transformer Design

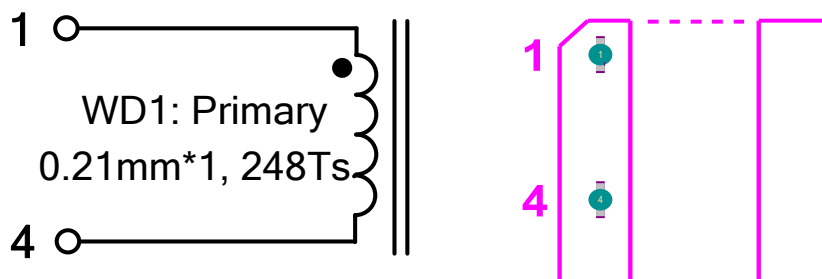
Bobbin and Core

EE13 Vertical 5+5 pin

Transformer Parameters

1. Primary Inductance (Pin1-Pin4): $L_p=2.4\text{mH}$, $\pm 5\% @ 1\text{kHz}$
2. Primary Winding Turns(Pin1-Pin4): $N_p=248\text{Ts}$

Transformer Winding Construction Diagram

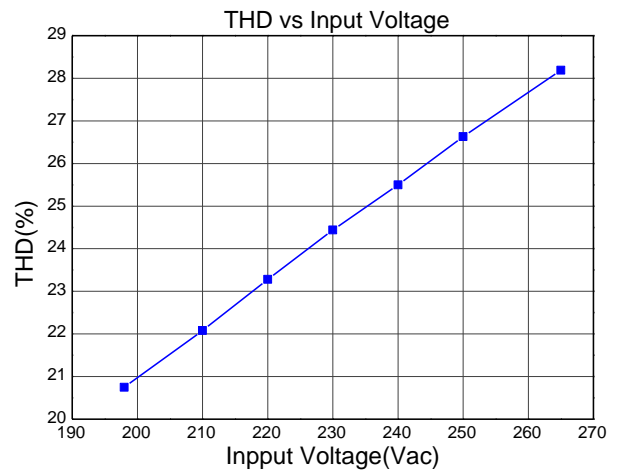
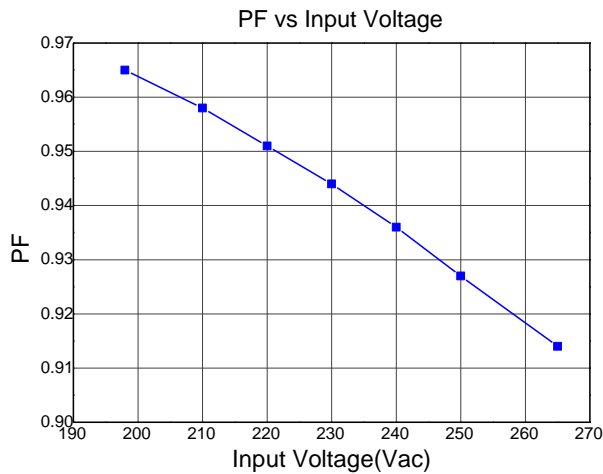
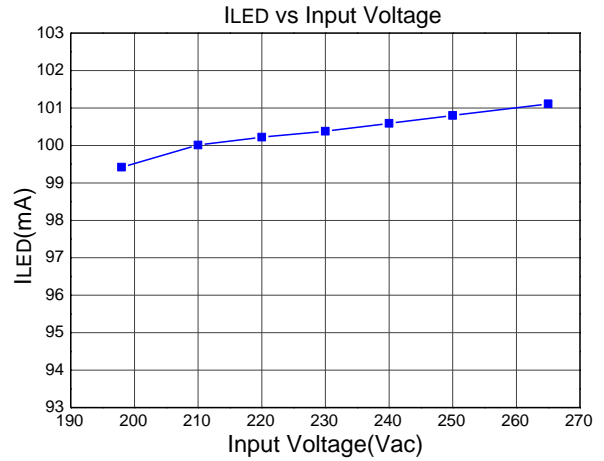
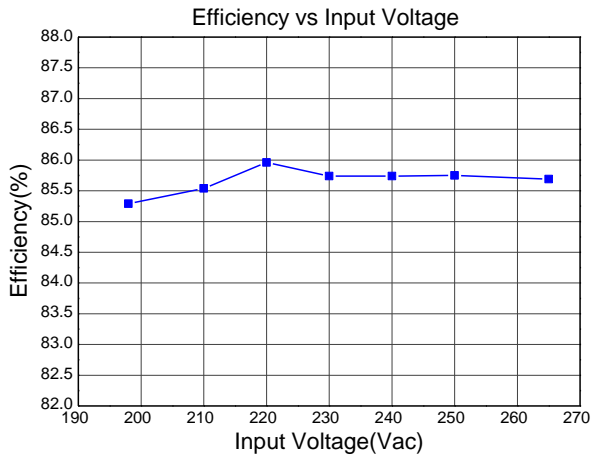


Item	Winding name	Description
1	WD1-Primary Winding	Start at Pin 1, Wind 248 turns of $\Phi 0.21\text{mm}$ wire and finish on Pin 4
2	Insulation	2Layers of insulation tape

Bill of Material

#	Item	Description	Package	Quantity
1	C1	10nF/400V, CL21, Pitch=7.5mm	DIP	1
2	C2	100nF/400V, CL21, Pitch=7.5mm	DIP	1
3	C3	33nF/400V, CL21, Pitch=7.5mm	DIP	1
4	C4	Ceramic Cap, 1uF/25V,X7R	0805	1
5	C5	Ceramic Cap, 0.22uF/100V,X7R	1206	1
6	C6	Ceramic Cap, 0.47uF/25V,X7R	0603	1
7	C7	E-Cap,130°C,100uF/100V,10*16mm	DIP	1
8	C8	E-Cap,130°C,5.6uF/100V, 5*9mm	DIP	1
9	C9	3.3nF/630V, CL21, Pitch=7.5mm	DIP	1
10	BD1	Rectifier Bridge,HD06,0.8A/600V,Diodes Inc	MiniDIP	1
11	D1	1N4007, 1A/1000V,Diodes Inc	SOD-123	1
12	D2	Fast Recovery Diode,US1J,1A/600V,Diodes Inc	SMA	1
13	D4	Switching diode, 1N4148,Diodes Inc	SOD-123	1
14	D5	DDZ9688,4.7V Zener, Diodes Inc	SOD-123	1
15	VR1	Varistor, 07D431	DIP	1
16	RF1	Fuse Resistor,100R, 5%, 1W	DIP	1
17	R1, R2	Resistor, 4.7K, 5%, 1/8W	0805	2
18	R3	SMD Resistor,390R, 5%, 1W	2010	1
19	R5	SMD Resistor,130K, 5%, 1/8W	0603	1
20	R6	SMD Resistor,100K, 5%, 1/8W	1206	1
21	R4,R7	SMD Resistor,130K, 5%, 1/4W	1206	2
22	R8	SMD Resistor,11K, 5%, 1/8W	0805	1
23	R10	SMD Resistor,3.9R, 1%, 1/4W	1206	1
24	R11	SMD Resistor,4.3R, 1%, 1/4W	1206	1
25	R12	SMD Resistor,100K, 5%, 1/4W	1206	1
26	R13,R14	SMD Resistor,270K, 5%, 1/4W	1206	2
27	RJ1	SMD Resistor,0R, 5%, 1/4W	1206	1
28	R15	SMD Resistor,47K, 5%, 1/8W	0805	1
29	L1, L2	Drum Inductor 4.7mH, 6*8mm	DIP	2
30	L3	EE13, Vertical, 5+5pin,Single Winding,2.4mH	DIP	1
31	Q1	N-MOS,DMG3420U, 20V/4A,Diodes Inc	SOT-23	1
32	U1	AL1697-40D,Diodes Dimmable IC	SOIC-7	1
Total				36

Electrical Performance

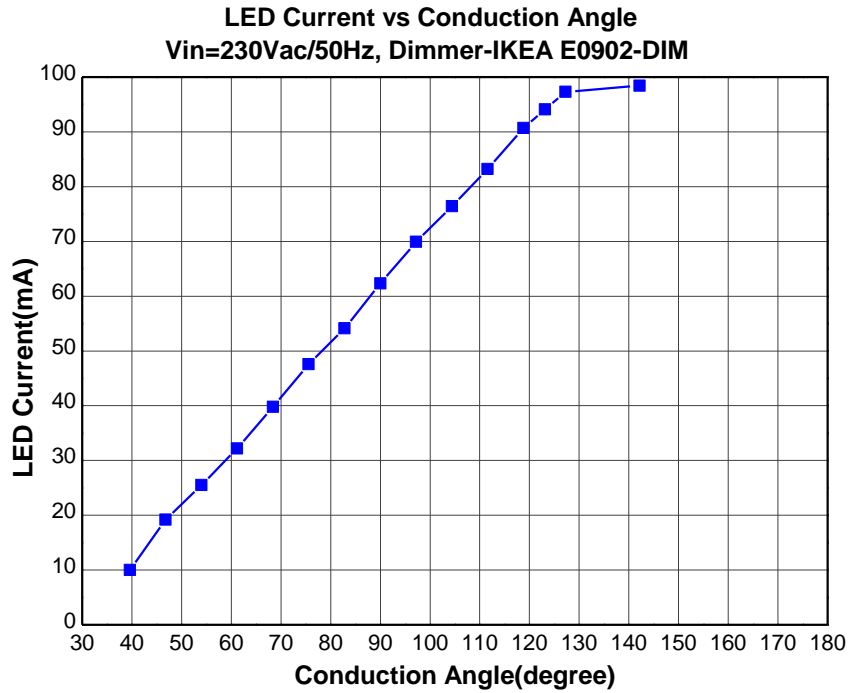


Dimming Test

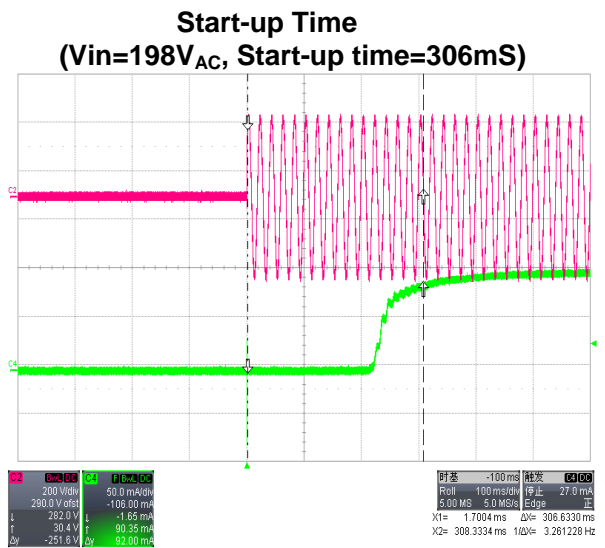
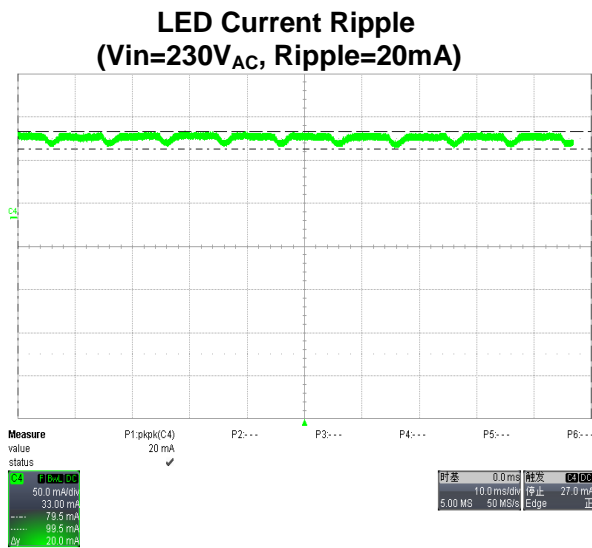
Dimmer compatibility and dimming range

Num	Dimmer Type	ILED(mA)		Dimming Percentage(%)		Flicker or not
		Min	Max	Min	Max	
1	Gira 030700 T 20-525W	21.62	100.37	20.99	97.45	No
2	Busch Jaeger 6519U T 40-550W	18.73	100.44	18.18	97.51	No
3	Busch Jaeger 6517 U-101 L, 60-400W	3.73	101.65	3.621	98.69	No
4	PEHA D 80 433 V L 60-300W	3.14	101.46	3.049	98.5	No
5	Berker 281902 L 20-315W	0.00	100.27	0	97.35	No
6	Gira 030000 I01 L60-400W	0.00	100.39	0	97.47	No
7	Merten 5771-99 T 20-315W	32.61	101.60	31.66	98.64	No
8	PEHA 433HAB T 20-315W	24.34	100.81	23.63	97.87	No
9	ABB STD 50-3 L 60-500W	20.22	100.75	19.63	97.82	No
10	Berker 2874 T 20-250W	23.35	100.42	22.67	97.5	No
11	Busch Jaeger 6513U-102 T 40-420W	31.08	100.31	30.17	97.39	No
12	Busch Jaeger 6523U-LED L 2-100W	5.42	100.48	5.262	97.55	No
13	Berker 2875 L 60-600W	31.38	101.94	30.47	98.97	No
14	Legrand 775903 T 420W	25.42	100.01	24.68	97.1	No
15	Merten 5771-99 T 20-315W	14.12	100.78	13.71	97.84	No
16	Siamens 5TCB 284 T 20-525W	32.41	101.22	31.47	98.27	No
17	Gira 117600 U 50-420W	4.67	100.86	4.534	97.92	No
18	Busch-Jae 2247U L 500W	22.90	100.72	22.23	97.79	No
19	KOPP/Sicherung 8033 L 40-400W	24.70	100.46	23.98	97.53	No
20	He T46 T 20-315W	16.78	101.65	16.29	98.69	No
21	Berker 2861 10 U50-420W	30.61	100.41	29.72	97.49	No
22	Busch-Jaeger 2250U L 60-600W	11.59	101.47	11.25	98.51	No
23	Jung 254 UDIE1 U50-420W	12.08	100.58	11.73	97.65	No
24	Jung 1254 UDE U50-420W	39.95	101.21	38.79	98.26	No
25	Gira 030200/I01 L60-600W	5.36	100.97	5.204	98.03	No
26	Everflourish EFM700DC T 25-150W	27.92	100.74	27.11	97.81	No
27	IKEA E0902-DIM L25-150W	31.52	101.15	30.6	98.2	No
28	Busch-Jaeger 2200 L60-400W	3.9	101.06	3.786	98.12	No
29	ELSO ATD315 T40-315W	8.73	100.01	8.476	97.1	No
30	CLIPSAL 32E450LM L 20-450W	25.08	100.07	24.35	97.16	No

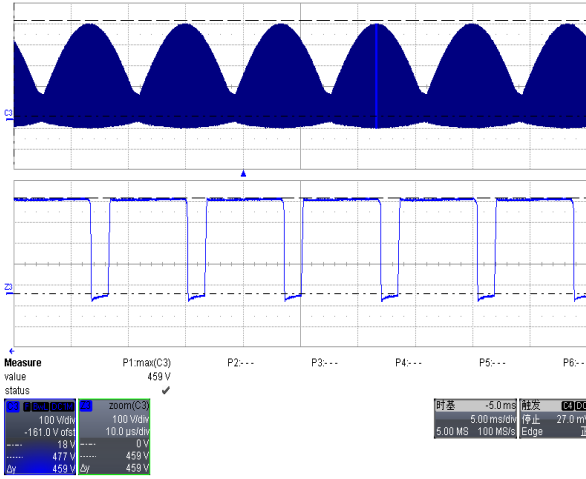
Dimming Curve



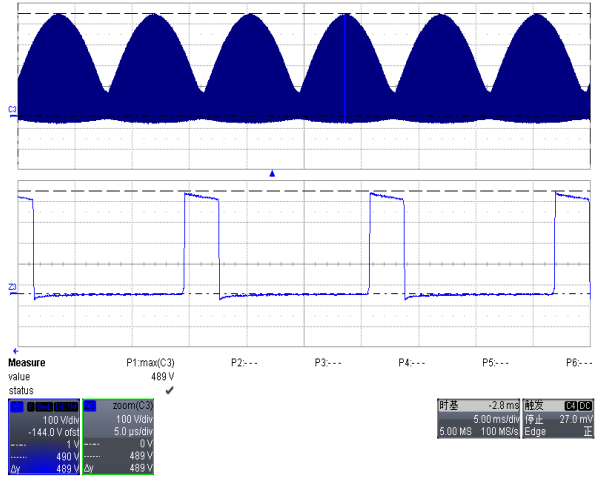
Functional Waveform



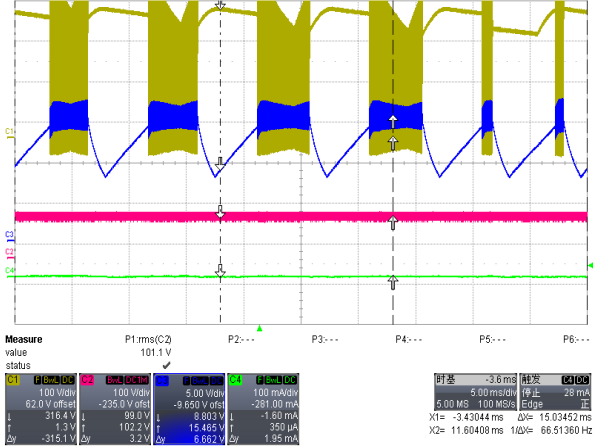
IC V_{DRAIN} Waveform
(Vin=264V_{AC}, V_{DRAIN_MAX}=459V)



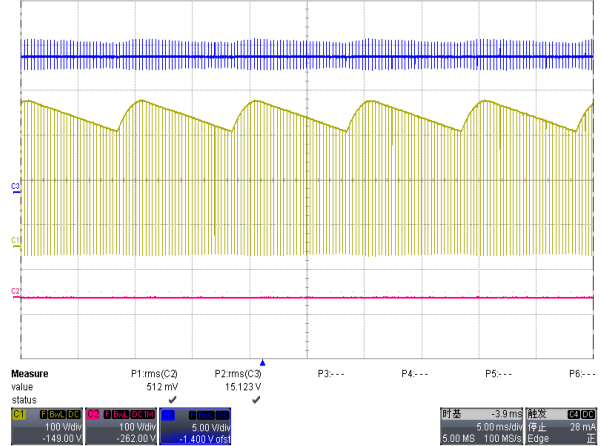
Output Diode V_R Waveform
(Vin=264V_{AC}, V_{R_MAX}=489V)



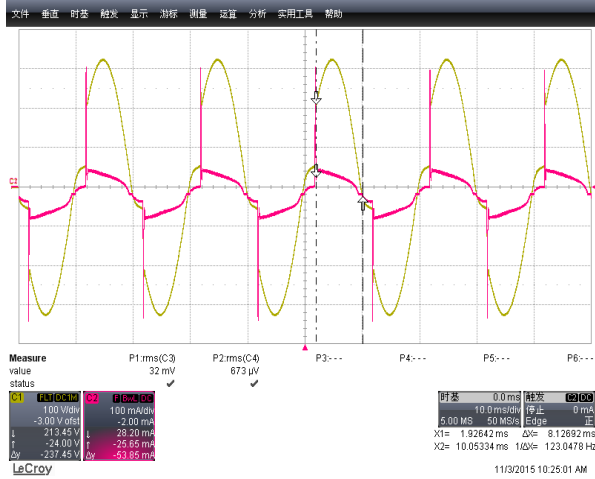
LED Open Protection
(Vin=230V_{AC}, Y-V_{DRAIN}, R-V_{out}, B-V_{CC}, G-I_{LED})



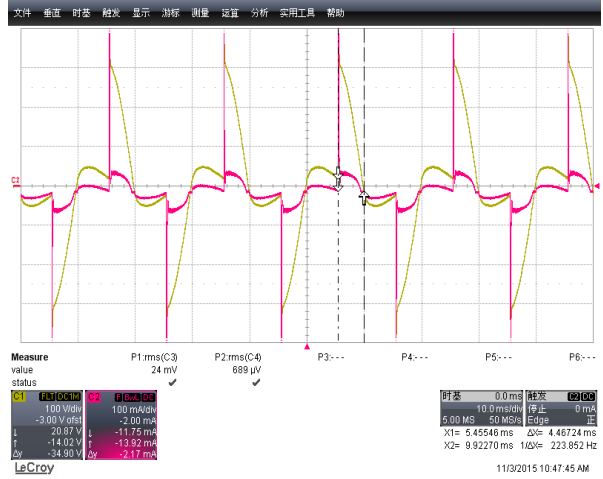
LED Short Protection
(Vin=230V_{AC}, Y-V_{DRAIN}, R-V_{out}, B-V_{CC})



Input AC Current vs Dimmer Phase
($V_{in}=230V_{AC}/50Hz$, Conduction Angle 146deg)



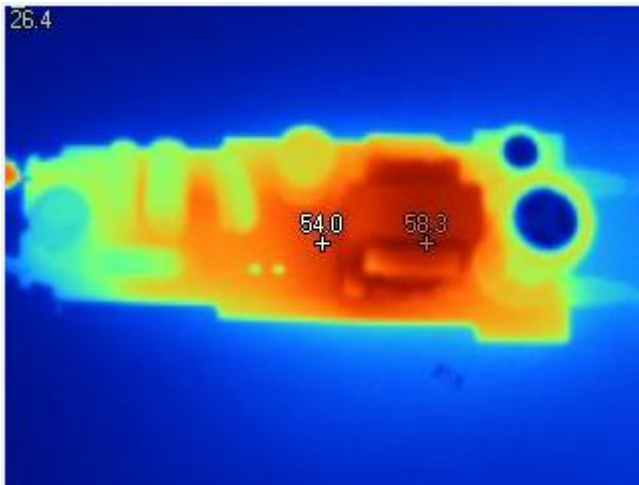
Input AC Current vs Dimmer Phase
($V_{in}=230V_{AC}/50Hz$, Conduction Angle 80deg)



Thermal Test

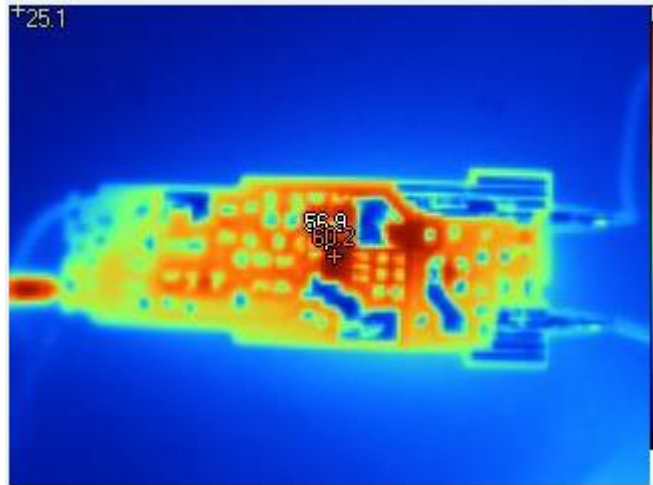
Top

$V_{in}=230V_{AC}/50Hz$, Burn-in time=30min



Bottom

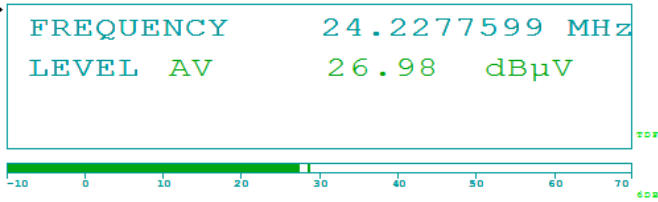
$V_{in}=230V_{AC}/50Hz$, Burn-in time=30min



EMI Conduction Test

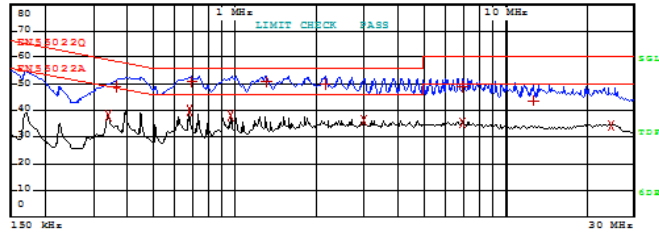
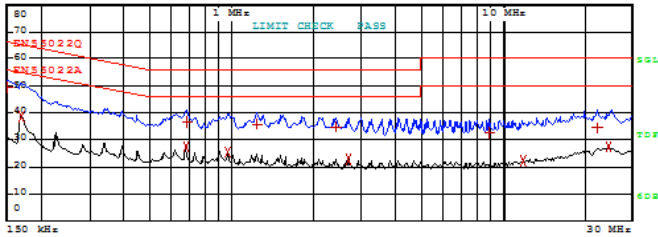
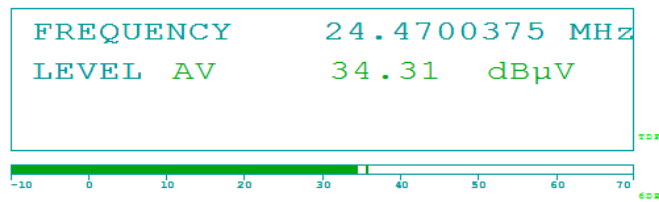
Line Terminal

Vin=230V_{AC}/50Hz, Margin>16dB



Neutral Terminal

Vin=230V_{AC}/50Hz, Margin>5dB



EDIT PEAK LIST (Final Measurement Results)			
TRACE	FREQUENCY	LEVEL dBµV	DELTA LIMIT dB
Trace1:	EN55022Q		
Trace2:	EN55022A		
Trace3:	---		
1 Quasi Peak	150 kHz	49.36	-16.63
2 Average	169.02375452 kHz	38.79	-16.21
2 Average	673.936068749 kHz	27.26	-18.73
1 Quasi Peak	680.675429436 kHz	36.58	-19.42
2 Average	954.699692378 kHz	25.49	-20.50
1 Quasi Peak	1.23658090545 MHz	35.90	-20.09
1 Quasi Peak	2.40884377744 MHz	34.90	-21.09
2 Average	2.68713605405 MHz	22.54	-23.45
1 Quasi Peak	8.86858861671 MHz	32.55	-27.44
2 Average	11.8351658887 MHz	22.31	-27.68
1 Quasi Peak	22.1524057738 MHz	34.18	-25.81
2 Average	24.2277599493 MHz	27.14	-22.85

EDIT PEAK LIST (Final Measurement Results)			
TRACE	FREQUENCY	LEVEL dBµV	DELTA LIMIT dB
Trace1:	EN55022Q		
Trace2:	EN55022A		
Trace3:	---		
2 Average	939.190678959 kHz	38.26	-10.95
1 Quasi Peak	960.057740611 kHz	49.00	-9.71
2 Average	673.936068749 kHz	39.85	-6.14
1 Quasi Peak	687.48218373 kHz	50.65	-5.34
2 Average	954.699692378 kHz	38.34	-7.65
1 Quasi Peak	1.29965885429 MHz	50.63	-5.36
1 Quasi Peak	2.1374603093 MHz	50.01	-5.98
2 Average	2.96826999929 MHz	36.19	-9.80
1 Quasi Peak	6.9154455372 MHz	49.03	-10.96
2 Average	6.9154455372 MHz	35.34	-14.65
1 Quasi Peak	12.5632670765 MHz	43.92	-16.07
2 Average	24.4700375488 MHz	34.41	-15.58

IMPORTANT NOTICE

DIODES INCORPORATED MAKES NO WARRANTY OF ANY KIND, EXPRESS OR IMPLIED, WITH REGARDS TO THIS DOCUMENT, INCLUDING, BUT NOT LIMITED TO, THE IMPLIED WARRANTIES OF MERCHANTABILITY AND FITNESS FOR A PARTICULAR PURPOSE (AND THEIR EQUIVALENTS UNDER THE LAWS OF ANY JURISDICTION).

Diodes Incorporated and its subsidiaries reserve the right to make modifications, enhancements, improvements, corrections or other changes without further notice to this document and any product described herein. Diodes Incorporated does not assume any liability arising out of the application or use of this document or any product described herein; neither does Diodes Incorporated convey any license under its patent or trademark rights, nor the rights of others. Any Customer or user of this document or products described herein in such applications shall assume all risks of such use and will agree to hold Diodes Incorporated and all the companies whose products are represented on Diodes Incorporated website, harmless against all damages.

Diodes Incorporated does not warrant or accept any liability whatsoever in respect of any products purchased through unauthorized sales channel.

Should Customers purchase or use Diodes Incorporated products for any unintended or unauthorized application, Customers shall indemnify and hold Diodes Incorporated and its representatives harmless against all claims, damages, expenses, and attorney fees arising out of, directly or indirectly, any claim of personal injury or death associated with such unintended or unauthorized application.

Products described herein may be covered by one or more United States, international or foreign patents pending. Product names and markings noted herein may also be covered by one or more United States, international or foreign trademarks.

This document is written in English but may be translated into multiple languages for reference. Only the English version of this document is the final and determinative format released by Diodes Incorporated.

LIFE SUPPORT

Diodes Incorporated products are specifically not authorized for use as critical components in life support devices or systems without the express written approval of the Chief Executive Officer of Diodes Incorporated. As used herein:

A. Life support devices or systems are devices or systems which:

1. are intended to implant into the body, or
2. support or sustain life and whose failure to perform when properly used in accordance with instructions for use provided in the labeling can be reasonably expected to result in significant injury to the user.

B. A critical component is any component in a life support device or system whose failure to perform can be reasonably expected to cause the failure of the life support device or to affect its safety or effectiveness.

Customers represent that they have all necessary expertise in the safety and regulatory ramifications of their life support devices or systems, and acknowledge and agree that they are solely responsible for all legal, regulatory and safety-related requirements concerning their products and any use of Diodes Incorporated products in such safety-critical, life support devices or systems, notwithstanding any devices- or systems-related information or support that may be provided by Diodes Incorporated. Further, Customers must fully indemnify Diodes Incorporated and its representatives against any damages arising out of the use of Diodes Incorporated products in such safety-critical, life support devices or systems.

Copyright © 2016, Diodes Incorporated

www.diodes.com