

# PRODUCT CARTON SPECIFICATION

## Outer/Inner Cartons, Designs & Camera Ready Art

### OUTER CARTON SPECIFICATIONS

OUTER CARTON							
PRODUCT DESCRIPTION	HEIGHT (H)		WIDTH (W)		LENGTH (L)		CARTON TYPE
	inches	Mm	inches	mm	inches	mm	
5KP, 5KW, 5W, DO-15, DO-41, DO-201, DO-201AD, R6, T1 (Tape and Reel form)	13.38	340	13.38	340	13.38	340	A
D2PAK	14.25	360	13.75	350	13.75	350	A
DF-M	12.50	315	13.00	330	19.75	500	B
DF-S	11.25	285	14.5	368	14.5	368	A
DO-15, DO-41, A-405 (Bulk form)	9.88	250	8.25	210	17.75	450	B
DO-201 / DO-201AD / R6 (Bulk form)	11.00	280	13.00	330	13.50	342	A
GBJ, GBU	10.38	265	9.06	230	20.50	520	B
HD	11.25	286	14.5	368	14.5	368	A
KBPC, GBPC, MP, MB	8.25	210	11.38	290	13.00	330	A
KBJ	9.63	245	9.06	230	22.44	570	B
KBP	11.25	285	10.38	265	22.44	570	B
PBL, RS4	12.08	315	11.38	290	13.00	330	A
PBP	11.75	300	13.00	330	13.00	330	A
PBPC-3/6A	11.75	300	13.00	330	13.00	330	A
PBPC-8/10A	12.25	310	8.25	210	17.75	450	B
PBU, RS6	6.5	178	13.5	343	13.5	343	A
TO-3P, TO-247	10.50	265	9.00	230	22.63	575	B
WOG	11.38	290	13.12	333	14.25	363	A

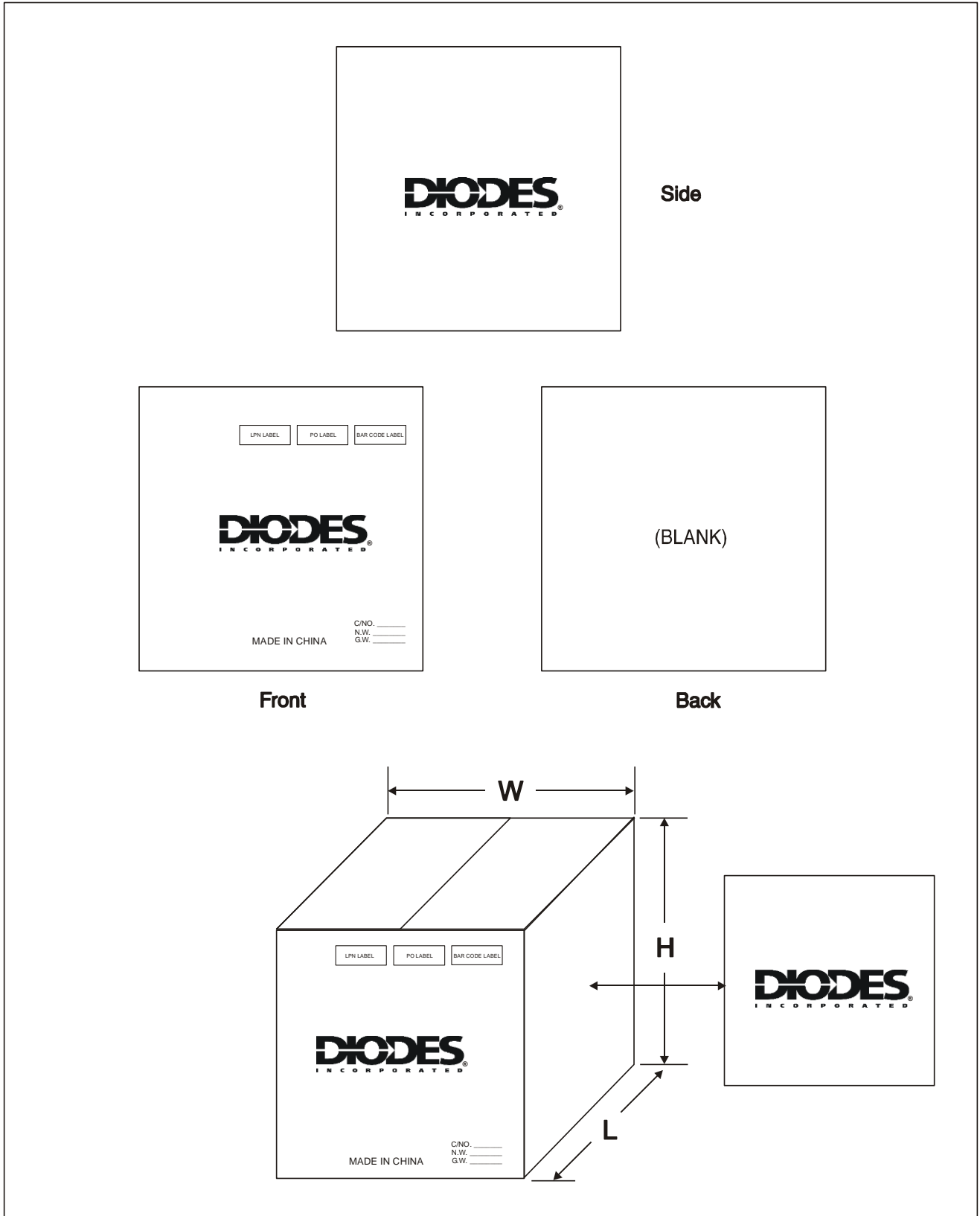
1. All cartons must meet Rule 41 of the Uniform Freight Classification.
2. All cartons must not exceed 35 lbs. on weight.
3. All carton printing must be from supplied camera ready art (refer to figures 1-4 of this specification).
4. Printed carton color must be Black.
5. Dimension tolerance is  $\pm 0.20"$  or  $\pm 5.0\text{mm}$ .
6. General carton design types A and B must be followed. Due to varying carton shapes, it may be necessary to scale or reposition design elements to match general format.
7. Carton samples or layout must be submitted to Quality Assurance prior to first article shipment.
8. Product Packaging will periodically be inspected for compliance to this specification.

### INNER CARTON SPECIFICATIONS

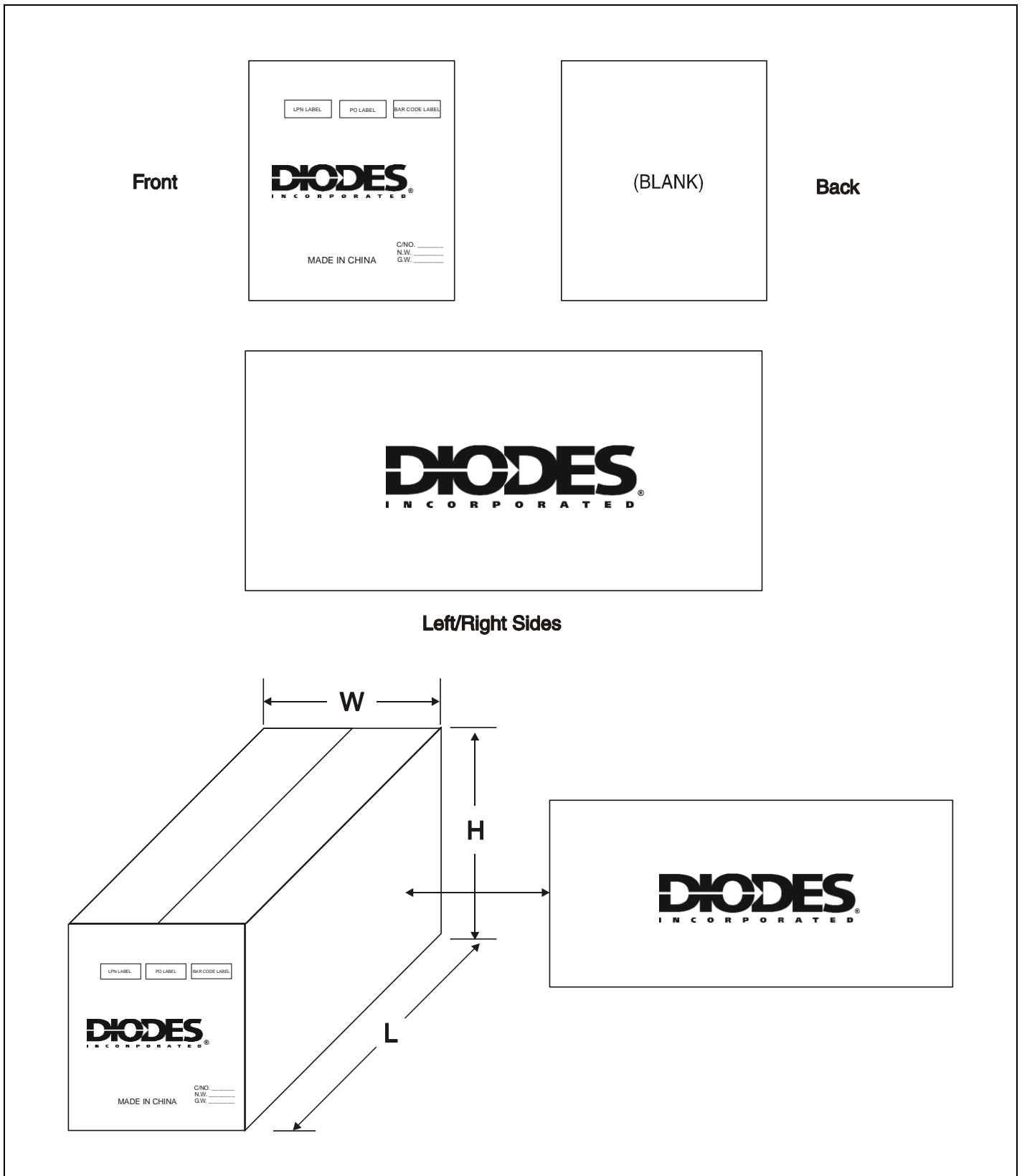
INNER CARTON							
PRODUCT DESCRIPTION	HEIGHT (H)		WIDTH (W)		LENGTH (L)		MAXIMUM QUANTITY
	inches	mm	inches	mm	inches	mm	
D2PAK	1.50	38	13.50	343	13.38	340	800
DF-M / DF-S (Tube)	6.00	152	6.50	165	19.50	495	5,000
DF-S (Tape)	1.13	29	13.25	337	13.25	337	1,500
DO-15, DO-41, A-405 (Bulk form)	0.90	23	3.38	86	7.88	200	1,000
DO-201AD, R6 (Bulk form)	1.50	38	3.00	76	12.00	305	500
DO-35	3.75	95	14.88	378	14.50	368	10,000
GBJ, GBU	7.36	187	8.00	203	20.00	508	600
HD	1.63	41	13.50	343	13.38	340	6,000
KBJ	5.00	127	8.25	210	22.00	559	1,000
KBP	5.50	140	9.50	241	22.00	559	3,500
MELF	1.50	38	13.25	337	13.25	337	10,000
MiniDIP	1.50	38	13.25	337	13.25	337	6,000
MiniMELF	3.00	76	7.25	184	7.25	184	12,500
SMA	1.63	41	13.50	343	13.38	340	10,000
SMB	1.63	41	13.50	343	13.38	340	6,000
SMC	2.13	54	13.50	343	13.38	340	6,000
TO-3P	5.00	127	8.00	203	21.50	546	5,000
WOG	3.25	83	6.88	175	10.00	254	1,000

1. All cartons must meet Rule 41 of the Uniform Freight Classification.
2. Dimension tolerance is  $\pm 0.20\text{in.}$  or  $\pm 5.0\text{mm}$ .
3. Product Packaging will periodically be inspected for compliance to this specification.

**OUTSIDE CARTON – TYPE A**



**OUTSIDE CARTON – TYPE B**



---

(Discrete Products)  
SQUARE FRONT – Fig. 1

---

LPN LABEL

PO LABEL

BAR CODE LABEL



MADE IN CHINA

C/NO. \_\_\_\_\_  
N.W. \_\_\_\_\_  
G.W. \_\_\_\_\_

---

(Discrete Products)  
SQUARE SIDE – Fig. 2

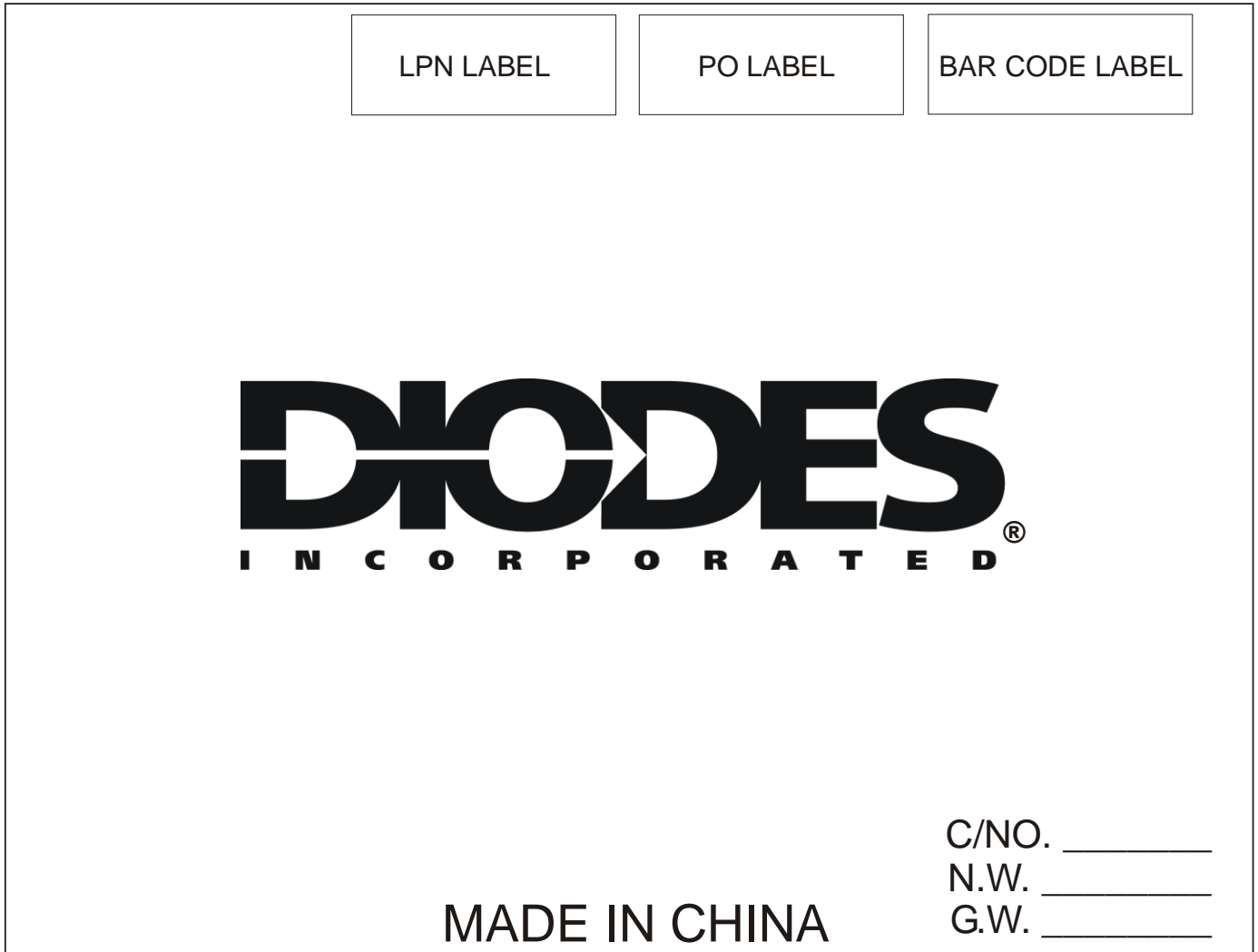
---



---

(Discrete Products)  
RECTANGLE (FRONT SIDE) – Fig. 3

---



---

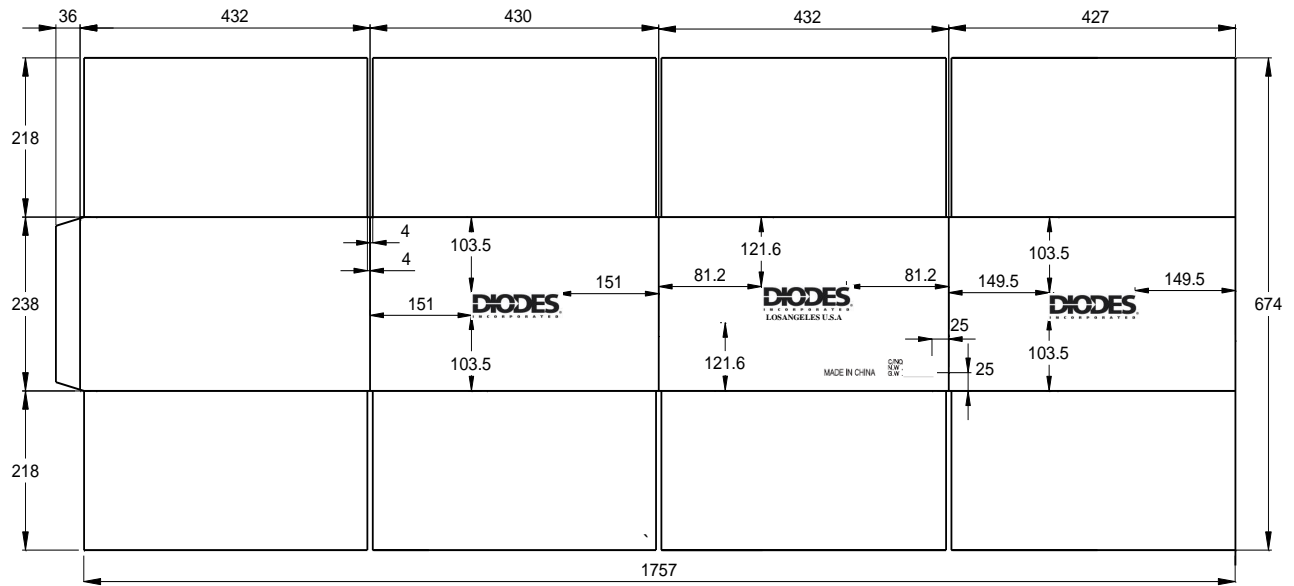
(Discrete Products)  
RECTANGLE (LONG SIDE) – Fig. 4

---

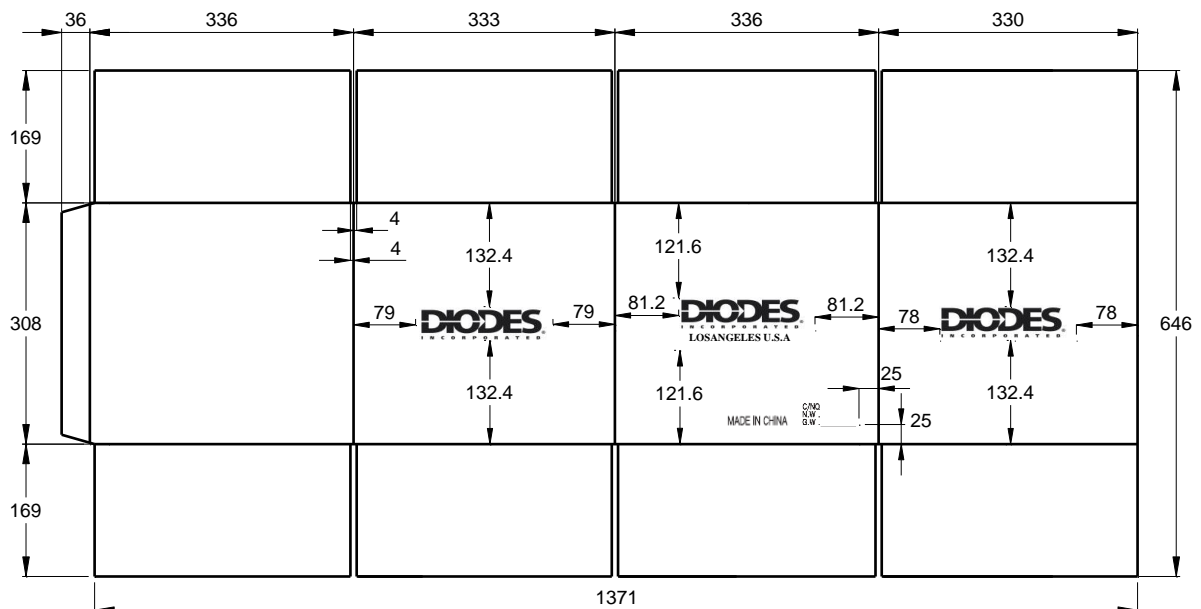


**(Discrete Products)**  
**OUTER CARTON SPECIFICATIONS**

PRODUCT PACKAGING	OUTER CARTON						CARTON TYPE
	HEIGHT (H)		WIDTH (W)		LENGTH (L)		
	Inches	mm	inches	mm	inches	mm	
7" Tape	9.37	238	16.9	430	17.00	432	Fig. 5
13" Tape	12.12	308	13.11	333	13.22	336	Fig. 6
13" Tape (TC option)	14.88	378	13.94	354	17.32	440	A
POWERDI <sup>®</sup> 5SP	13.94	354	14.88	378	17.32	440	A
Tube	8.62	219	7.56	192	22.64	575	B



**Fig. 5**



**Fig. 6**



**(Discrete Products)**  
**INNER CARTON SPECIFICATIONS**

INNER CARTON																
PRODUCT PACKAGE (7" Tape)	HEIGHT (H)		WIDTH (W)		LENGTH (L)		QTY	CARTON TYPE								
	inches	mm	inches	mm	inches	mm										
DFN Series (3K/reel)	8.11	206	7.87	200	8.00	203	45000	Fig. 7								
DFN Series (10K/reel)							150000									
POWERDI <sup>®</sup> 123 / POWERDI <sup>®</sup> 323							45000									
POWERDI <sup>®</sup> 3333							24000									
SC-59							45000									
SOD-123/323/523							45000									
SOD-323F							45000									
SOT-23/323/353/363/523/666							45000									
SOT-25/26/SC-74R							45000									
SOT-553/563							45000									
SOT-953/963							150000									
DFN Series							Note 1		0.59	15	7.28	185	7.28	185	3000	Fig. 8
SOD323 / 523																
SOT23F																
SOT-23/ 323/ 25/ 26																
MSOP-8	Note 1	0.79	20	7.28	185	7.28	185	1000								
SM-8								500								
SO-8								500								
SOT-223								1000								
SOT-89																

Note: 1. Discrete packages with TA or TD taping suffix. Refer to datasheet for details.

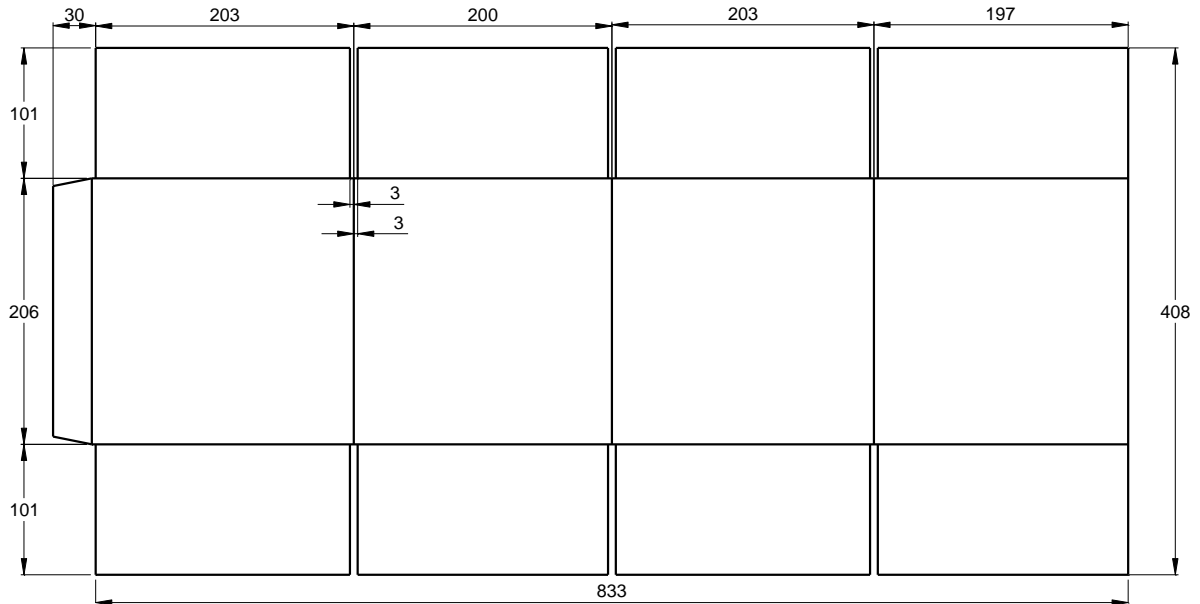


Fig. 7

**(Discrete Products)**  
**INNER CARTON SPECIFICATIONS**

PRODUCT PACKAGE (13" Tape)		INNER CARTON						QTY	CARTON TYPE
		HEIGHT (H)		WIDTH (W)		LENGTH (L)			
		inches	mm	inches	mm	inches	mm		
DFN Series	Note 2	0.79	20	13.58	345	13.58	345	10000	Fig. 8
MSOP-8 / SO-8								2500	
SOD323 / 523								10000	
SOT-23/ 23F/ 323/ 26								10000	
SOT-223								4000	
SOT-89	4000								
POWERDI <sup>®</sup> 5SP		1.97	50	13.35	339	13.90	353	3500	
TO-252	Note 2	1.18	30	13.58	345	13.58	345	2500	

Note 2. Discrete packages in 13" reel with taping suffix of TC and -13R in SOT89. Discrete packages in 13" reel other than those mentioned above are boxed directly to the discrete outer carton.

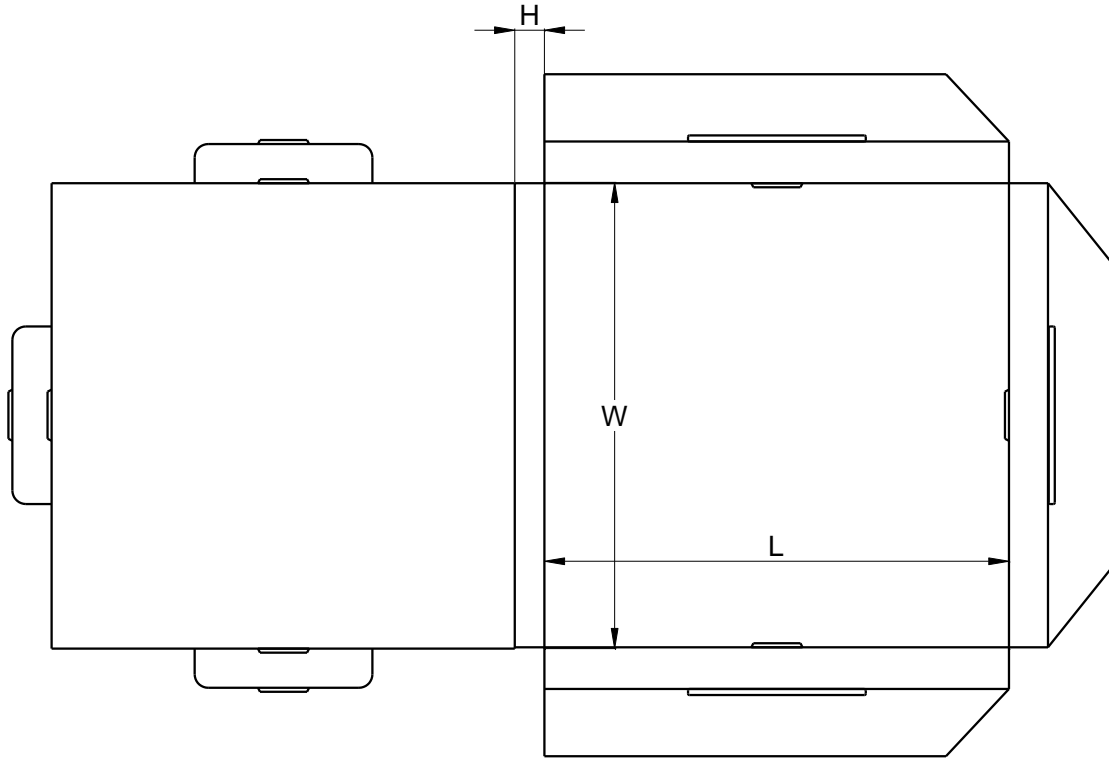


Fig. 8

PRODUCT PACKAGE (Tube)		INNER CARTON						QTY	CARTON TYPE
		HEIGHT (H)		WIDTH (W)		LENGTH (L)			
		inches	mm	inches	mm	inches	mm		
TO263		3.74	95	6.77	172	21.85	555	2000	-
TO220, ITO220, TO262									

PRODUCT PACKAGE (Ammo Packing)		INNER CARTON						QTY	CARTON TYPE
		HEIGHT (H)		WIDTH (W)		LENGTH (L)			
		inches	mm	inches	mm	inches	mm		
TO92	Note 3	1.69	43	6.38	162	13.11	333	2000	-

Note: 3. Discrete packages with STZ taping suffix. Refer to datasheet for details.

**(Analog IC Products)  
OUTER CARTON SPECIFICATIONS**

PRODUCT PACKAGING		OUTER CARTON						CARTON TYPE	
		HEIGHT (H)		WIDTH (W)		LENGTH (L)			
		Inches	mm	inches	mm	inches	mm		
Tube, Tray, Bag, PVC Box		8.58	218	15.55	395	25.08	637	Fig 9	
Tube (DIP 14L)		6.50	165	15.20	386	22.63	575	B	
7" & 13" Tape, Ammo Box		14.88	378	13.94	354	17.32	440	Fig.10	
7" & 13" Tape, Pizza Box/Inner Box		Note 4	9.37	238	13.94	354	14.88	378	Fig. 11

Note: 4. For small scale shipment (i.e. Max 4 pizza boxes or 6 inner boxes).

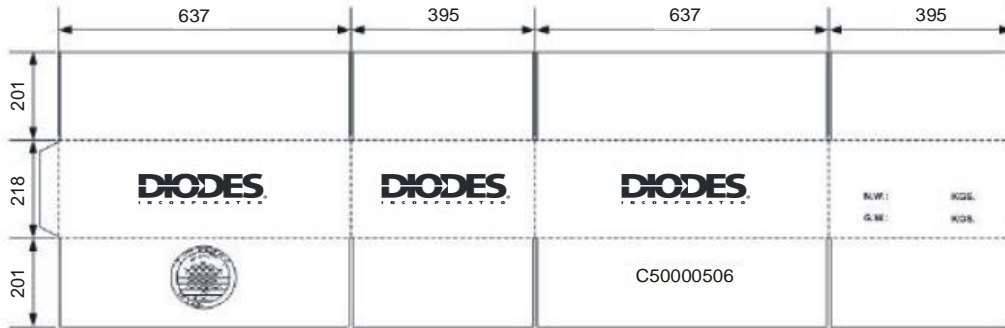


Fig. 9

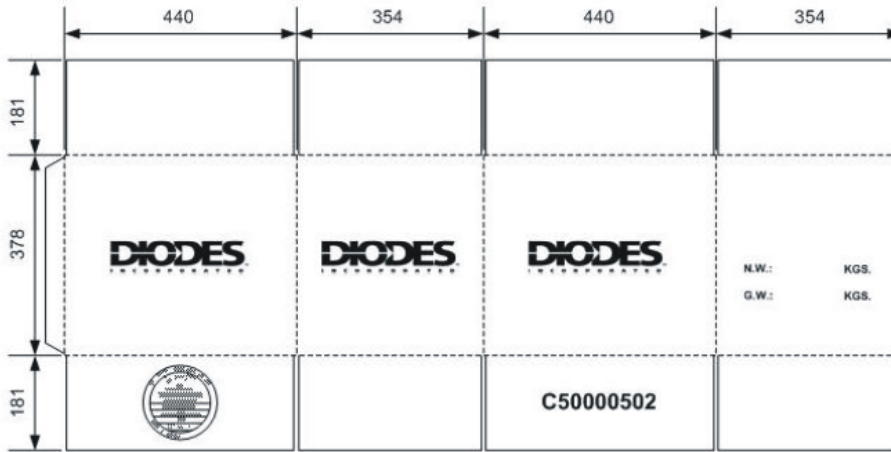


Fig. 10

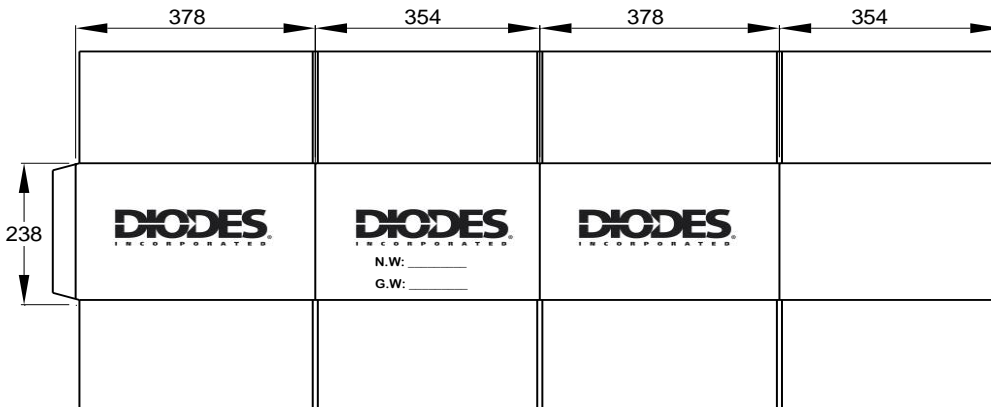


Fig. 11

**(Analog IC Products)  
INNER CARTON SPECIFICATIONS**

PRODUCT PACKAGE (13" Tape)	INNER CARTON						Qty	Carton Type
	HEIGHT (H)		WIDTH (W)		LENGTH (L)			
	inches	mm	inches	mm	inches	mm		
MSOP SOT223 SOT89	1.97	50	13.35	339	13.90	353	2500	Fig. 12
PLCC(20-Lead)	1.97	50	13.35	339	13.90	353	1,000	Fig. 12
PLCC(28-Lead)	6.00	152	6.50	165	19.50	495	750	
PLCC(44-Lead)	1.13	29	13.25	337	13.25	337	500	
TO263	1.97	50	13.35	339	13.90	353	800	Fig. 12
TSSOP(8,16-Lead)	0.90	23	3.38	86	7.88	200	2,500	
SOP (300mil)	1.50	3	3.00	76	12.00	305	1,000	
TSSOP (20,24,28-Lead)	1.50	38	13.50	343	13.38	340	2,000	
POWERDI <sup>®</sup> 5	7.36	187	8.00	203	20.00	508	5,000	

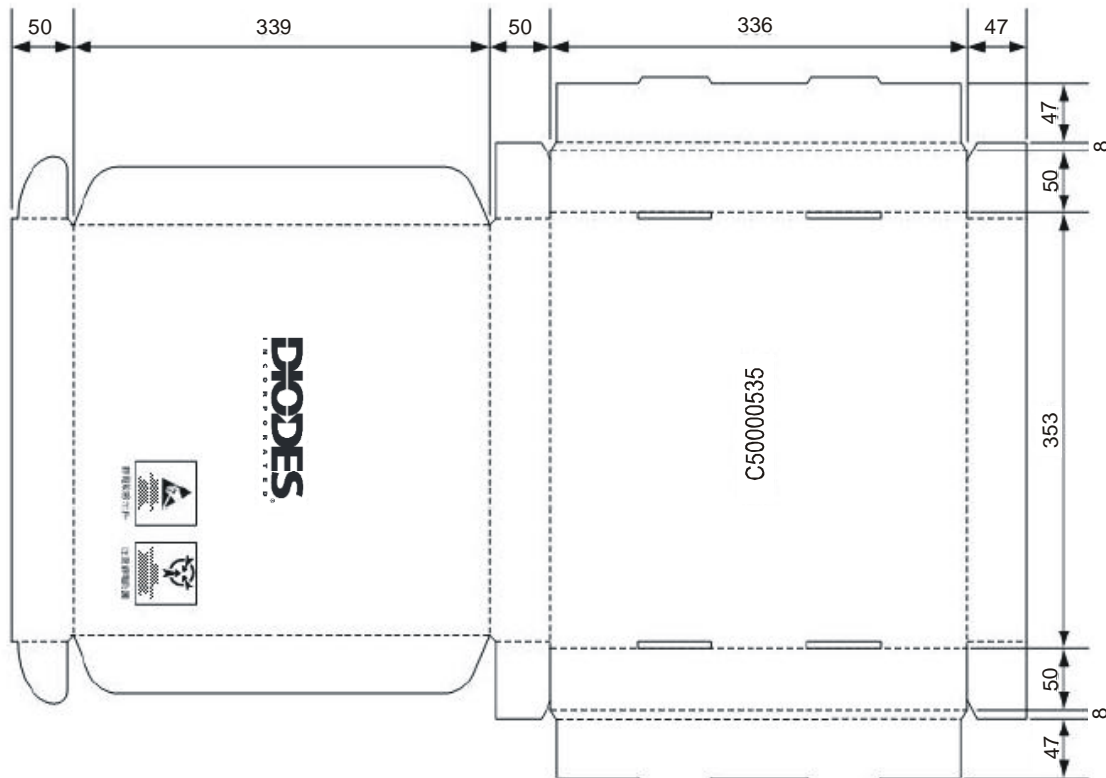


Fig. 12

**(Analog IC Products)**  
**INNER CARTON SPECIFICATIONS**

PRODUCT PACKAGE (Ammo Box)	HEIGHT (H)		WIDTH (W)		LENGTH (L)		Qty (Fig. 13)
	inches	mm	inches	mm	inches	mm	
SIP	1.57	40	7.68	195	12.99	330	4,000
TO-92							2,000

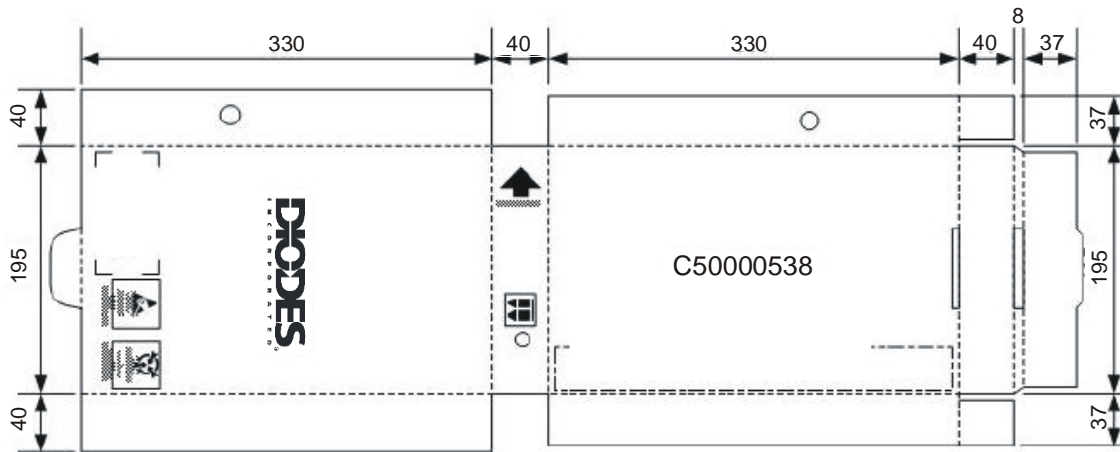


Fig. 13

**(Analog IC Products)**  
**INNER CARTON SPECIFICATIONS**

PRODUCT PACKAGE (Tube)	HEIGHT (H)		WIDTH (W)		LENGTH (L)		Qty (Fig. 14)
	inches	mm	inches	mm	inches	mm	
DIP(300mil)(8-Lead)	3.82	97	7.36	187	24.61	625	5040
DIP(300mil)(14-Lead) <span style="float:right">Note 6</span>	2.76	70	5.31	135	21.81	554	1000
DIP(300mil)(16-Lead)							2520
DIP(300mil)(20-Lead)							1260
DIP(300mil)(24-Lead)							1050
DIP(300mil)(28-Lead)							980
DIP(600mil)(40-Lead)							360
PLCC(20-Lead)							4800
PLCC(28-Lead)							3800
PLCC(44-Lead)							2080
SIP(Dry Pack),TO-92							20000
SIP(PVC Box)							25000
SOP(150mil)(5,7,8-Lead)							44000
SOP(150mil)(14-Lead)							24640
SOP(150mil)(16-Lead)	3.82	97	7.36	187	24.61	625	22000
SOP(300mil)(20-Lead)							5550
SOP(300mil)(24-Lead)							4650
SOP(300mil)(28-Lead)							3900
SOT-223							22500
TO-220,TO-263							2000
TO-220R(5-Lead)							1000
TO-252							9600
TSSOP(8-Lead)							67200
TSSOP(16-Lead)							40320
TSSOP(20-Lead)							30000
TSSOP(24-Lead)							24800
TSSOP(28-Lead)							20800

Note : 6. Carton type see Fig 15.

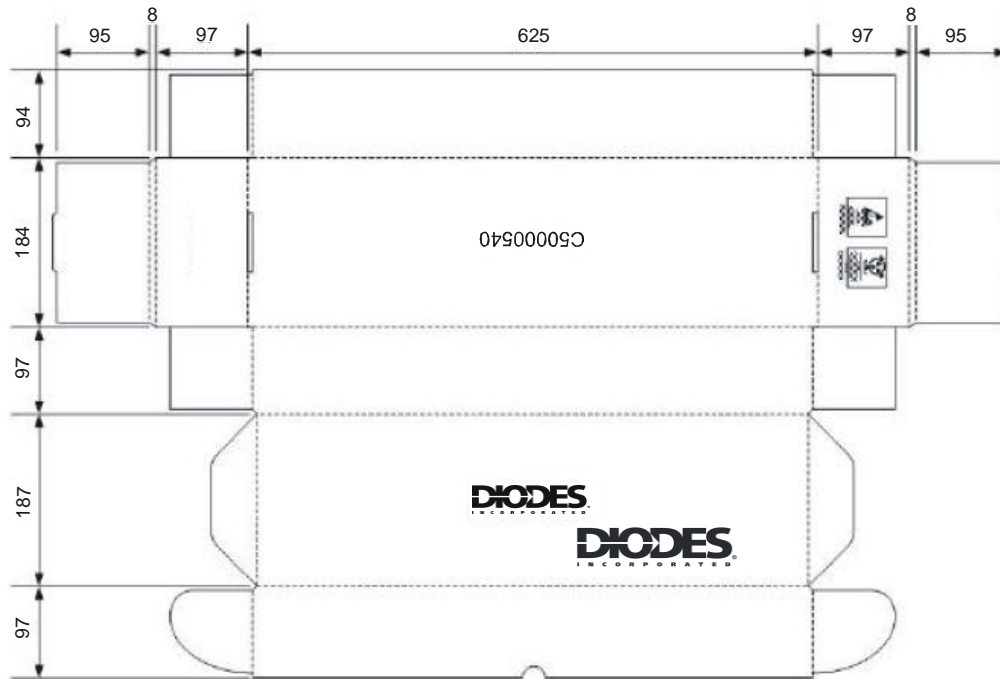


Fig. 14



Fig. 15

**(Analog IC Products)**  
**INNER CARTON SPECIFICATIONS**

PRODUCT PACKAGE (Tray)	HEIGHT (H)		WIDTH (W)		LENGTH (L)		Qty (Fig. 16)
	inches	mm	inches	mm	inches	mm	
LQFP, TQFP	3.54	90	5.91	150	14.17	360	1,600
QFP(44-Lead)							960
QFP(52-Lead)							840

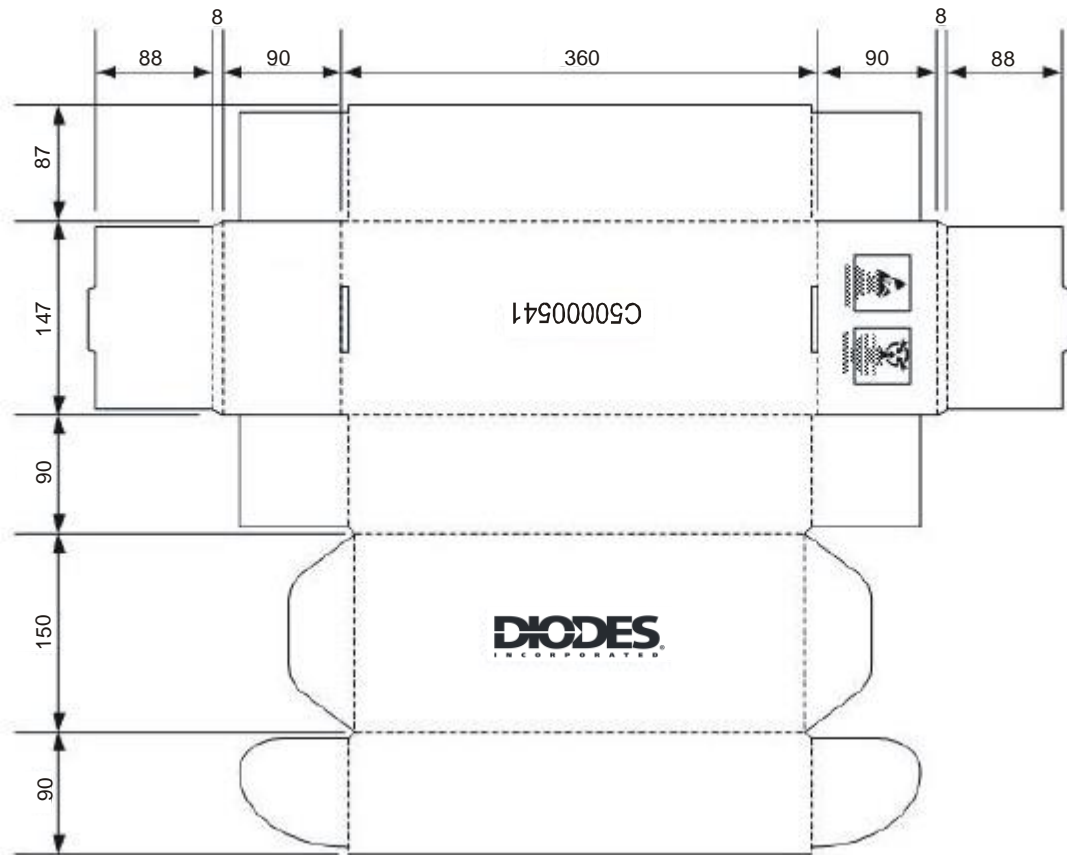


Fig. 16

**(Analog IC Products)**  
**INNER CARTON SPECIFICATIONS**

PRODUCT PACKAGE (7" Tape)	HEIGHT (H)		WIDTH (W)		LENGTH (L)		Qty (Fig. 17)
	inches	mm	inches	mm	inches	mm	
SOT-23,SOT-25, SC-59 SOT-323	3.15	80	7.22	184	7.22	184	15,000
DFN/QFN Series (Note 7)							15,000
QFN4040							6,000

Note: 7. Unless otherwise specified in the table.

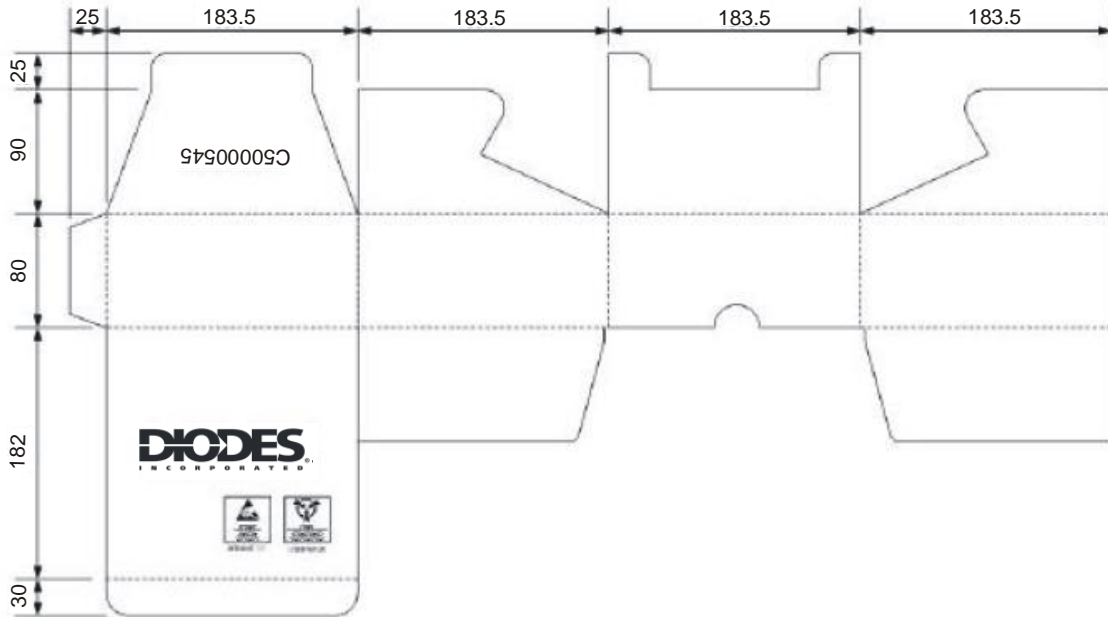


Fig. 17