

AN55

ZXCT1041 as a precision full wave rectifier

By Peter Abiodun Bode, Snr. Applications Engineer.

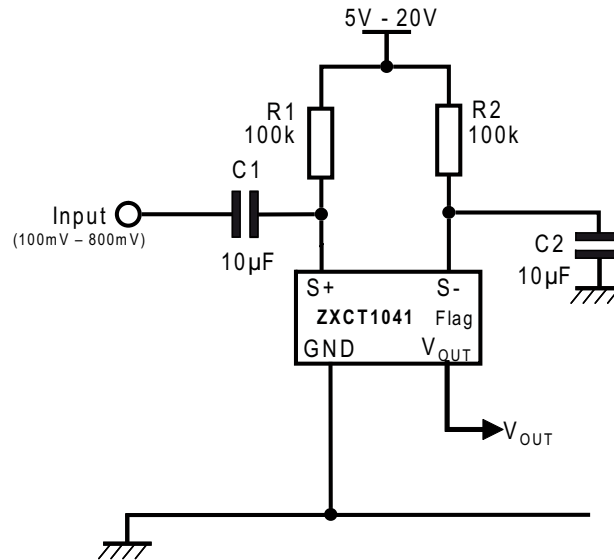


Figure 1 - A very simple full wave precision recifier

Introduction

The ZXCT1041 can be used to make a precision rectifier. This application note shows how to produce a simple precision rectifier using only 4 components and standard resistors.

Two circuits are presented for input voltages above 100mV and below 100mV. The solution is compared with the classic 2-opamp precision rectifier.

Rectifying low level voltages

The precision rectifier is needed because a diode has a forward voltage drop, V_F of typically 0.6V. Any signal that is not an order of magnitude larger than this will be distorted. The problem is worse for full wave rectification where the signal must overcome two diode drops. Even with a voltage as large as 10V, full wave rectification without significant distortion using only diodes is impossible. At least 12% of the signal will be subject to severe distortion. Often however, the signal to be rectified can be as low as a few millivolts.

The standard solution to this problem is to use diodes in the feedback path of an operational amplifier in order to effectively change these normal diodes into near perfect ones, i.e. devices that conduct unidirectionally with zero forward voltage drop.

There are many such circuits¹ but all share a common feature. They are generally based around

1. Most of these, though not all, can be found in the book *The Art of Electronics* by Paul Horowitz and Winfield Hill.

- Two op-amps
- At least one diode, and
- Up to five resistors

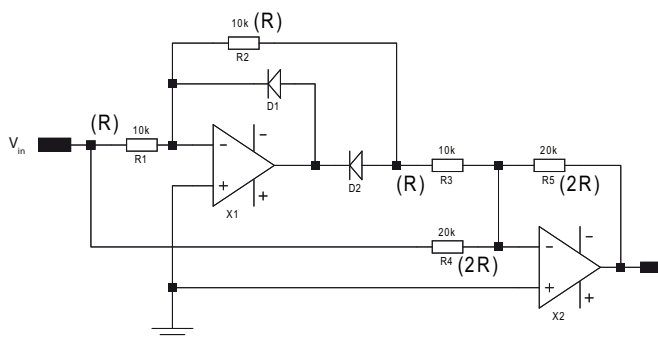


Figure 2 - Classic precision full wave rectifier (9 components)

With reference to Figure 2, for positive inputs, the transfer function is given by,,

$$V_{OUT} = +V_{IN} \left(\frac{R2}{R1} \cdot \frac{R5}{R3} - \frac{R5}{R4} \right) \quad \text{Equation 1}$$

For negative inputs, the transfer function is given by,

$$V_{OUT} = +V_{IN} \cdot \frac{R5}{R4} \quad \text{Equation 2}$$

There is inherent asymmetry in the transfer functions for the two halves of the signal and the circuit can only work qualitatively provided that

$$\frac{R2}{R1} \cdot \frac{R5}{R3} = 2 \cdot \frac{R5}{R4} \quad \text{Equation 3}$$

Or

$$\frac{R2}{R1} \cdot \frac{R4}{R3} = 2 \quad \text{Equation 4}$$

From Equation 4 above, the absolute values and ratios of resistors R1 to R4 are critical to satisfactory performance of this circuit. It also shows that there are two ways that the values could be arranged for precision rectification. One of these, shown in Figure 2, is to make R1, R2 and R3 all same value (R), and then make R4 and R5 equal to 2R for unity gain. The other is to make R1, R3, R4 and R5 the same value (R), and then make R2 equal¹ to 2R. This also gives a unity gain. The effect of R5 in both cases is to apply an overall gain to the circuit. Its absolute value is not important so long as the condition given by Equation 4 is satisfied. This will only be the case if very close tolerance resistors are used.

As elegant as the circuit above is, its drawbacks can be summarised as follows.

1. This second option, whilst it works fine, will in fact have a slightly reduced bandwidth in comparison with the first option. It is for this reason less preferred.

1.	Component count is relatively high, requiring 9 components
2.	Good performance depends on perfectly getting four resistors in parallel
3.	It requires a double-ended power supply

Table 1 - Shortcomings of classic precision full wave rectifiers

Using the ZXCT1041

The alternative method (shown in Figure 4) is based around the Zetex ZXCT1041 bidirectional current monitor and avoids all the problems outlined above.

The ZXCT1041 is primarily designed for providing bi-directional current monitoring. It is effectively two VOCM's (voltage-output current monitor) in anti-parallel formation within a SOT23-5 package. It produces an amplified output (gain=10) that is always positive regardless of the polarity of the voltage across its S+ and S- terminals (sense voltage or V_{SENSE}). This sense voltage is normally derived by using a sense resistor (R_S) in series with a load in order to make V_{SENSE} proportional to the load current.

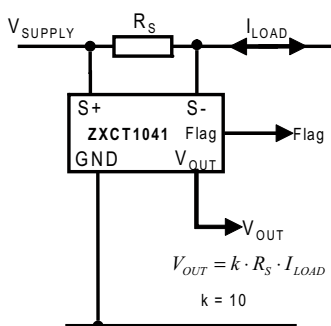


Figure 3 - ZXCT1041 bi-directional current monitor - normal application

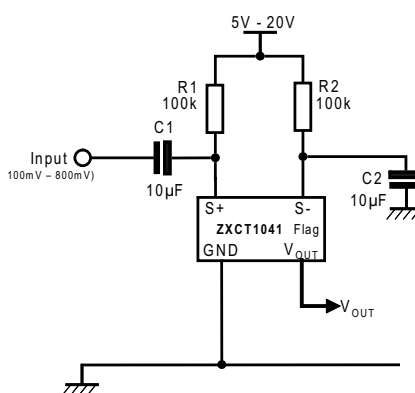


Figure 4 - Precision full wave rectifier using ZXCT1041

Circuit description

Using the ZXCT1041, the solution to the three problems in Table 1 are solved.

With reference to Figure 4, resistors R1 and R2 provide DC bias for pins S+ and S- respectively. Pin S- is decoupled by C2 effectively making it an AC ground. This means that any signal that is coupled onto pin S+ will appear across pins S+ and S- as sense voltage. This voltage is then amplified by the ZXCT1041 which produces a unipolar output. It is therefore an amplified full wave rectification of the AC component of the input voltage.

This solution offers an inherent advantage of blocking DC components in the signal. If DC blocking is a requirement, the conventional method would require an additional capacitor to achieve this which adds to the component count. This circuit is not usable for DC signals. If low frequency response is not required, the values of capacitors C1 and C2 can be correspondingly reduced. A value of 0.1 μ F, for example, is quite adequate for a signal of 1kHz.

Testing

The circuit above was constructed and tested for performance. The graphs below (Figure 5 to Figure 10) show how well it works. The circuit was tested with a range of signal amplitude from 100mV up to 500mV and frequency ranging from 50 Hz up to 25 kHz.

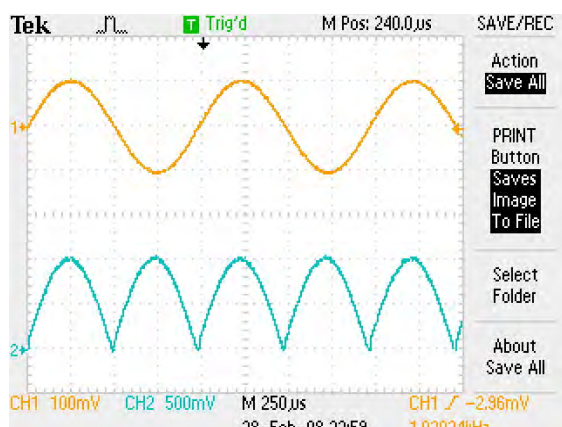


Figure 5 - 100mV input at 1kHz

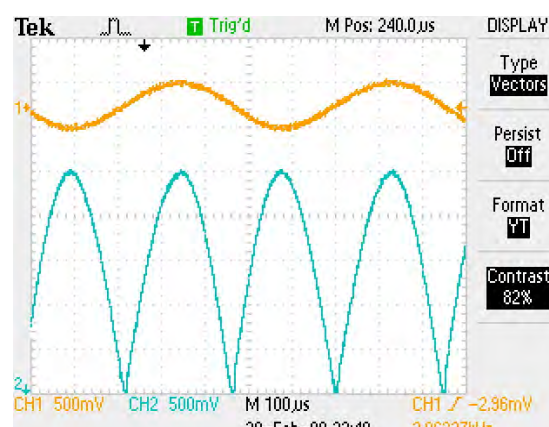


Figure 6 250mV input at 2kHz

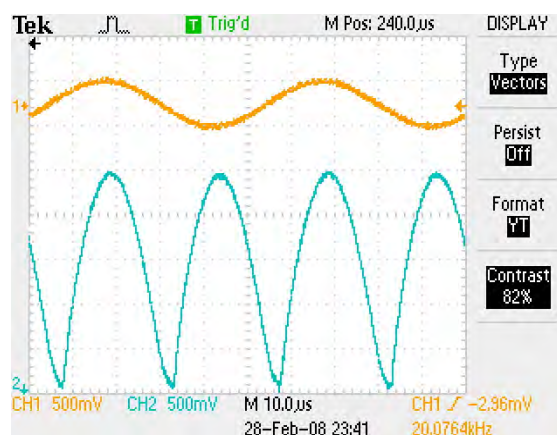


Figure 7 250mV at 20kHz

Very low level signals

Signals as low as 10mV can also be precision rectified by the circuit. There are however some limitations that need to be addressed.

Figure 9 shows the circuit being tested with an input signal of only 10mV. One factor limiting performance is the differential input offset voltage of the device. This is the net difference between the input offset voltage in the forward and reverse direction. This difference becomes additive to the rectified signal in one direction and subtractive to it in the other direction. The effect is seen in Figure 9 where alternate peaks are raised and lowered. It is a fairly harmless factor for two reasons. One, the net effect of this distortion on the average value of the signal is nil. Second, the effect is easily cancelled out by input offset trimming as shown in Figure 8. Figure 10 shows the much improved waveform after offset trimming.

Another limiting factor to the low input threshold is crossover distortion. This is introduced when the ZXCT1041 changes from conducting in one direction to conducting in the opposite direction. Two phenomena contribute to this distortion as next discussed. Effect of input offset voltage on crossover distortion

Effect of input offset voltage on crossover distortion

The first is the input offset voltage of the amplifiers within the ZXCT1041. The effect of these input offset voltages is analogous to the forward voltage drop of a diode in that the signal must first overcome it before the amplifier begins to respond. However, since the input offset voltage is quite small (of the order of 0.9mV to 5mV), the effect is largely indiscernible except at the very low input voltages such as is being considered in Figure 9.

Effect of zero crossing delay on crossover distortion

A far more dominant phenomenon contributing to crossover distortion is the zero crossing delay of the device. This is the delay between one amplifier switching off and the other taking over when the input changes polarity. It is quantified on the datasheet with graphs showing typical delays for small and large signals. This delay can be as long as 8 μ s including the effects of output slew rate.

In general all these effects are more dominant and visible only at very low input voltages (less than 100mV) but less conspicuous at higher input voltages (higher than 100mV). Together, they impose a limit on the bandwidth that is achievable by the circuit. Although, the ZXCT1041, when operated in the unipolar mode with suitable DC bias, is capable of a bandwidth of 300kHz, the achievable bandwidth in this experiment has been limited to about 25kHz due to these outlined factors.

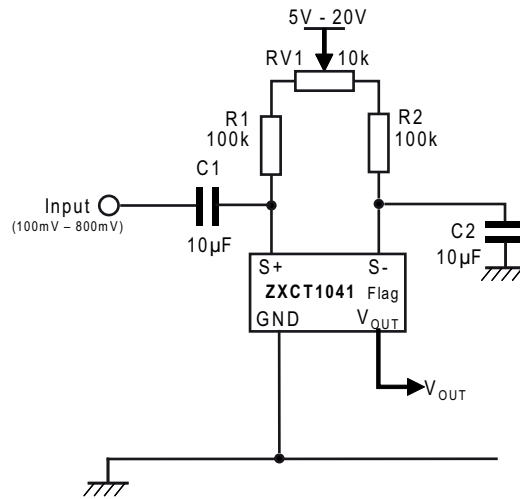


Figure 8 - Compensating for input offset voltage effect

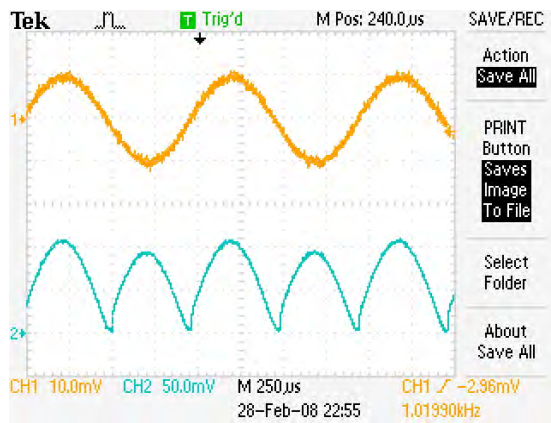


Figure 9 - 10mV input at 1kHz - no offset trimming

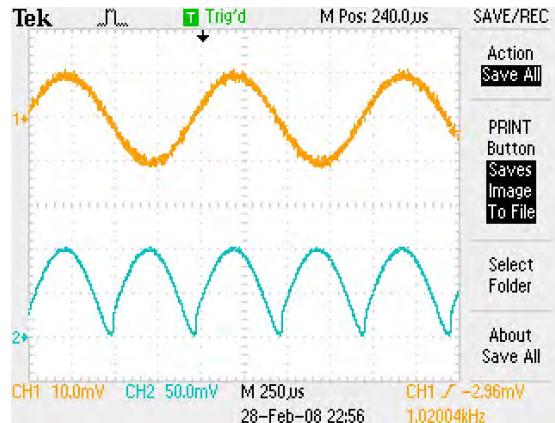


Figure 10 - 10mV input at 1kHz - with offset trimming

Conclusion

A precision full wave rectifier can be implemented using the ZXCT1041. It offers the advantage of a reduced component count over the conventional two op-amp methods.

It uses only two resistors and two capacitors and its performance is not adversely affected by the absolute values of any of these. A good match is still recommended for the two resistors as any mismatch translates to input offset and output offset voltages. However, for *very low level signals*, any mismatch does not generate an absolute error but a shift in relative amplitudes of each half of the signal.

Unlike the classic circuit that requires both a positive and negative supply, this one only uses a positive power supply.

Recommended further reading

1. AN39 - Current Measurement Applications Handbook.
2. Datasheet ZXCT1041

Definitions**Product change**

Diodes Incorporated reserves the right to alter, without notice, specifications, design, price or conditions of supply of any product or service. Customers are solely responsible for obtaining the latest relevant information before placing orders.

Applications disclaimer

The circuits in this design/application note are offered as design ideas. It is the responsibility of the user to ensure that the circuit is fit for the user's application and meets with the user's requirements. No representation or warranty is given and no liability whatsoever is assumed by Diodes Inc. with respect to the accuracy or use of such information, or infringement of patents or other intellectual property rights arising from such use or otherwise. Diodes Inc. does not assume any legal responsibility or will not be held legally liable (whether in contract, tort (including negligence), breach of statutory duty, restriction or otherwise) for any damages, loss of profit, business, contract, opportunity or consequential loss in the use of these circuit applications, under any circumstances.

Life support

Diodes Zetex products are specifically not authorized for use as critical components in life support devices or systems without the express written approval of the Chief Executive Officer of Diodes Incorporated. As used herein:

A. Life support devices or systems are devices or systems which:

1. are intended to implant into the body

or

2. support or sustain life and whose failure to perform when properly used in accordance with instructions for use provided in the labeling can be reasonably expected to result in significant injury to the user.

B. A critical component is any component in a life support device or system whose failure to perform can be reasonably expected to cause the failure of the life support device or to affect its safety or effectiveness.

Reproduction

The product specifications contained in this publication are issued to provide outline information only which (unless agreed by the company in writing) may not be used, applied or reproduced for any purpose or form part of any order or contract or be regarded as a representation relating to the products or services concerned.

Terms and Conditions

All products are sold subjects to Diodes Inc. terms and conditions of sale, and this disclaimer (save in the event of a conflict between the two when the terms of the contract shall prevail) according to region, supplied at the time of order acknowledgement.

For the latest information on technology, delivery terms and conditions and prices, please contact your nearest Diodes Zetex sales office.

Quality of product

Diodes Zetex Semiconductors Limited is an ISO 9001 and TS16949 certified semiconductor manufacturer.

To ensure quality of service and products we strongly advise the purchase of parts directly from Diodes Inc. or one of our regionally authorized distributors. For a complete listing of authorized distributors please visit: www.zetex.com or www.diodes.com

Diodes Inc. does not warrant or accept any liability whatsoever in respect of any parts purchased through unauthorized sales channels.

ESD (Electrostatic discharge)

Semiconductor devices are susceptible to damage by ESD. Suitable precautions should be taken when handling and transporting devices. The possible damage to devices depends on the circumstances of the handling and transporting, and the nature of the device. The extent of damage can vary from immediate functional or parametric malfunction to degradation of function or performance in use over time. Devices suspected of being affected should be replaced.

Green compliance

Diodes Inc. is committed to environmental excellence in all aspects of its operations which includes meeting or exceeding regulatory requirements with respect to the use of hazardous substances. Numerous successful programs have been implemented to reduce the use of hazardous substances and/or emissions.

All Diodes Zetex components are compliant with the RoHS directive, and through this it is supporting its customers in their compliance with WEEE and ELV directives.

Product status key:

"Preview"	Future device intended for production at some point. Samples may be available
"Active"	Product status recommended for new designs
"Last time buy (LTB)"	Device will be discontinued and last time buy period and delivery is in effect
"Not recommended for new designs"	Device is still in production to support existing designs and production
"Obsolete"	Production has been discontinued

Datasheet status key:

"Draft version"	This term denotes a very early datasheet version and contains highly provisional information, which may change in any manner without notice.
"Provisional version"	This term denotes a pre-release datasheet. It provides a clear indication of anticipated performance. However, changes to the test conditions and specifications may occur, at any time and without notice.
"Issue"	This term denotes an issued datasheet containing finalized specifications. However, changes to specifications may occur, at any time and without notice.

Diodes Zetex sales offices

Europe	Americas	Asia Pacific	Corporate Headquarters
Zetex GmbH Kustermann-park Balanstraße 59 D-81541 München Germany Telephone: (49) 89 45 49 49 0 Fax: (49) 89 45 49 49 49 europe.sales@zetex.com	Zetex Inc 700 Veterans Memorial Highway Hauppauge, NY 11788 USA Telephone: (1) 631 360 2222 Fax: (1) 631 360 8222 usa.sales@zetex.com	Diodes Zetex (Asia) Ltd 3701-04 Metroplaza Tower 1 Hing Fong Road, Kwai Fong Hong Kong Telephone: (852) 26100 611 Fax: (852) 24250 494 asia.sales@zetex.com	Diodes Incorporated 15660 N Dallas Parkway Suite 850, Dallas TX75248, USA Telephone: (1) 972 385 2810 www.diodes.com

© 2008 Published by Diodes Incorporated