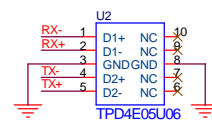
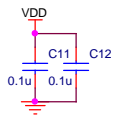


D+/- traces between type-C and type-A connectors as short as possible.

Use 0.1uF if TX output swing >1.4V



TPD4E05U06  
 Or, LXES2TBBB4-028  
 Or, ESD5V3U4U-HDMI  
 Or, ESDL5V0DFN10  
 Or, ESDR0524P  
 Or, SP3010-04

